

For Research Use Only

KEAP1 Polyclonal antibody

Catalog Number: 10503-2-AP

Featured Product

268 Publications



Basic Information

Catalog Number:
10503-2-AP

Size:
150ul, Concentration: 600 µg/ml by
Nanodrop and 373 µg/ml by Bradford
method using BSA as the standard;

Source:
Rabbit

Isotype:
IgG

Immunogen Catalog Number:
AG0779

GenBank Accession Number:
BC002930

GeneID (NCBI):
9817

Full Name:
kelch-like ECH-associated protein 1

Calculated MW:
624 aa, 70 kDa

Observed MW:
70 kDa

Purification Method:

Antigen affinity purification

Recommended Dilutions:

WB 1:2000-1:10000

IP 0.5-4.0 ug for IP and 1:500-1:1000
for WB

IHC 1:50-1:500

Applications

Tested Applications:

IHC, IP, WB, ELISA

Cited Applications:

CoIP, IF, IHC, IP, WB

Species Specificity:

human, mouse, rat

Cited Species:

bovine, *Codonopsis lanceolata*, human, monkey,
mouse, pig, rat

**Note-IHC: suggested antigen retrieval with
TE buffer pH 9.0; (*) Alternatively, antigen
retrieval may be performed with citrate
buffer pH 6.0**

Positive Controls:

WB: HEK-293 cells, HepG2 cells, Jurkat cells

IP: mouse skeletal muscle tissue,

IHC: human lung cancer tissue, human breast cancer
tissue, human skeletal muscle tissue

Background Information

KEAP1, also named as INRF2, KIAA0132 and KLHL19, is part of a multiprotein complex that contains the CUL3-ROC1 ubiquitin ligase, which can ubiquitinate the N-terminal domain of NRF2 [PMID: 20173742]. Two molecules of KEAP1 bind to two distinct sites in the N-terminal region of NRF2, the ETGE and DLG sites, which affect the KEAP1-NRF2 interaction and/or its physiological consequences [PMID: 22215675]. KEAP1 retains NFE2L2/NRF2 in the cytosol. It functions as substrate adapter protein for the E3 ubiquitin ligase complex formed by CUL3 and RBX1 [PMID: 20427290]. It also retains BPTF in the cytosol. This antibody is a rabbit polyclonal antibody raised against residues near the C terminus of human KEAP1.

Read more about this antibody on the blog: <http://blog.ptglab.com/index.php/nsclc-research-anti-keap1-antibody-helps-uncover-targets-biomarker-potential/>

Notable Publications

Author	Pubmed ID	Journal	Application
Elisabetta Beneduce	30252956	Am J Hematol	WB
Inui Takuma T	24086340	PLoS One	WB
Yuan Li	30238534	Phytother Res	WB

Storage

Storage:

Store at -20°C. Stable for one year after shipment.

Storage Buffer:

PBS with 0.02% sodium azide and 50% glycerol pH 7.3.

Aliquoting is unnecessary for -20°C storage

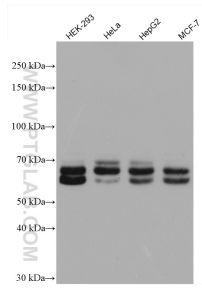
For technical support and original validation data for this product please contact:

T: 1 (888) 4PTGLAB (1-888-478-4522) (toll free
in USA), or 1(312) 455-8498 (outside USA)

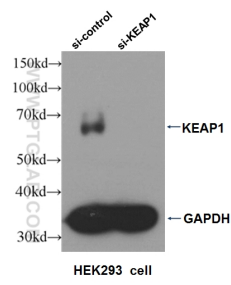
E: proteintech@ptglab.com
W: ptglab.com

**This product is exclusively available under Proteintech
Group brand and is not available to purchase from any
other manufacturer.**

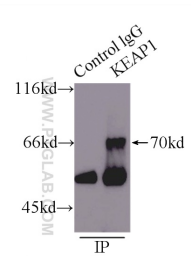
Selected Validation Data



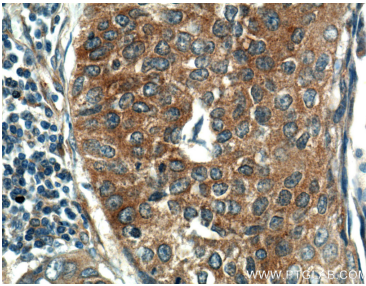
Various lysates were subjected to SDS PAGE followed by western blot with 10503-2-AP (KEAP1 antibody) at dilution of 1:5000 incubated at room temperature for 1.5 hours.



WB result of KEAP1 antibody (10503-2-AP, 1:2000) with si-control and si-KEAP1 transfected HEK293 cell.



IP Result of anti-KEAP1 (IP:10503-2-AP, 5ug; Detection:10503-2-AP 1:600) with mouse skeletal muscle tissue lysate 8000ug.



Immunohistochemical analysis of paraffin-embedded human lung cancer tissue slide using 10503-2-AP (KEAP1 Antibody) at dilution of 1:200 (under 10x lens).