

Figure S1. TMEM229A knockdown promotes H1299 cell proliferation, migration and invasion *in vitro*. (A) mRNA expression level of TMEM229A was detected via reverse transcription-quantitative PCR in H1299 cells. (B) Western blot analysis of TMEM229A expression in H1299 cells. (C and D) Cell proliferation was detected using Cell Counting Kit-8 and RTCA assays in H1299 cells. (E-G) Migration and invasion were measured using RTCA and Transwell assays in H1299 cells. * $P < 0.05$, ** $P < 0.01$ and *** $P < 0.001$. TMEM229A, transmembrane protein 229A; NSCLC, non-small cell lung cancer; RTCA, real-time cellular analysis; si-Ctrl, scrambled siRNA; si-, small interfering.

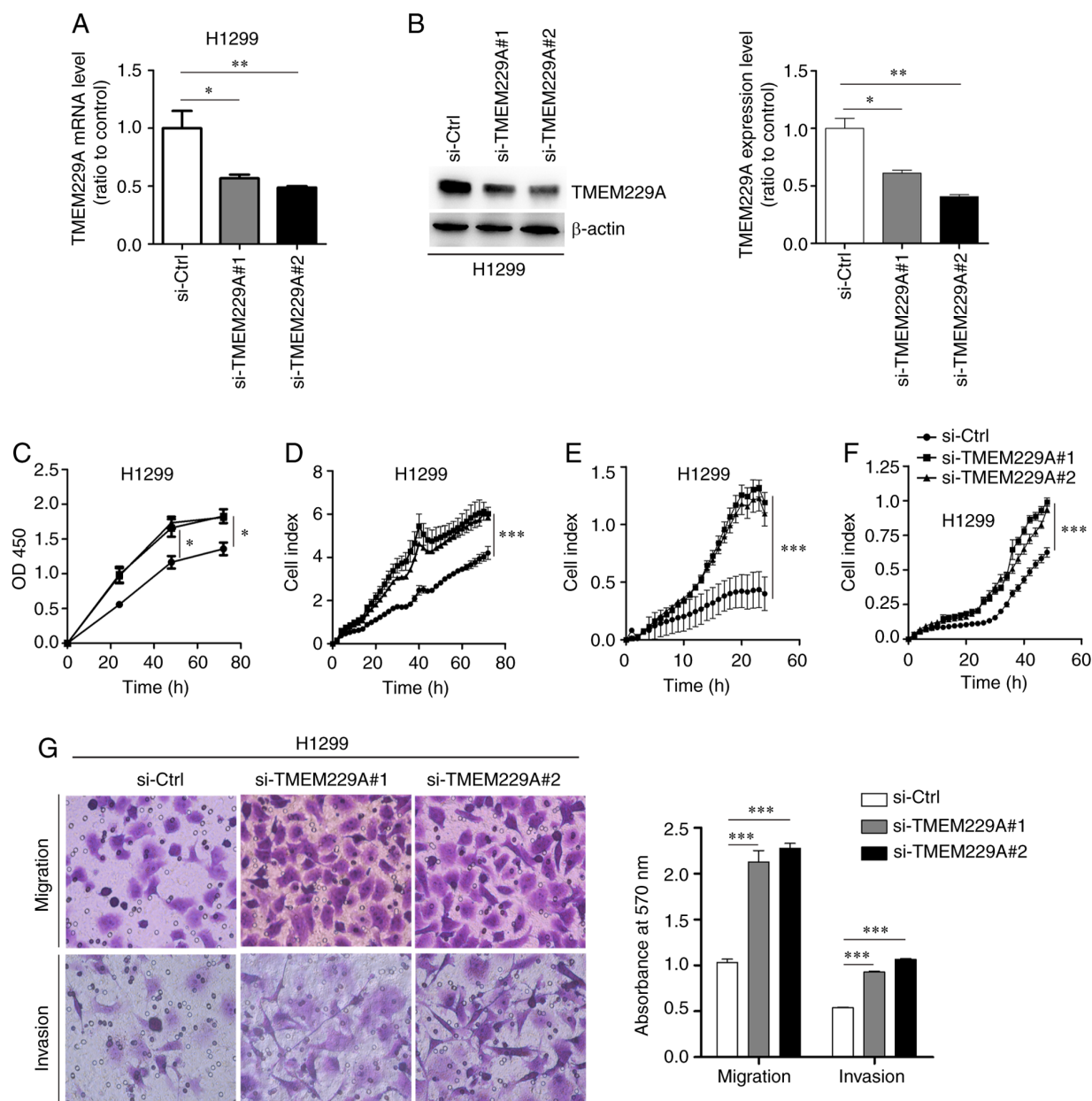


Figure S2. TMEM229A does not affect p-p38, p-JNK and p-p65 expression levels. Western blotting examination of p-p38, p-JNK and p-p65 expression after TMEM229A overexpression. TMEM229A, transmembrane protein 229A; OE, overexpressed; p-, phosphorylated.

