

Supporting Information

Ubiquitin Ligase Activities of WWP1 Germline Variants K740N and N745S

Hanjie Jiang^{1,2}, Daniel R. Dempsey¹, Philip A. Cole^{1,2}

¹Division of Genetics, Department of Medicine, Brigham and Women's Hospital, Department of Biological Chemistry and Molecular Pharmacology, Harvard Medical School, Boston, MA 02115; ²Department of Pharmacology and Molecular Sciences, Johns Hopkins School of Medicine, Baltimore, MD 21205;

Supplemental Figure S1

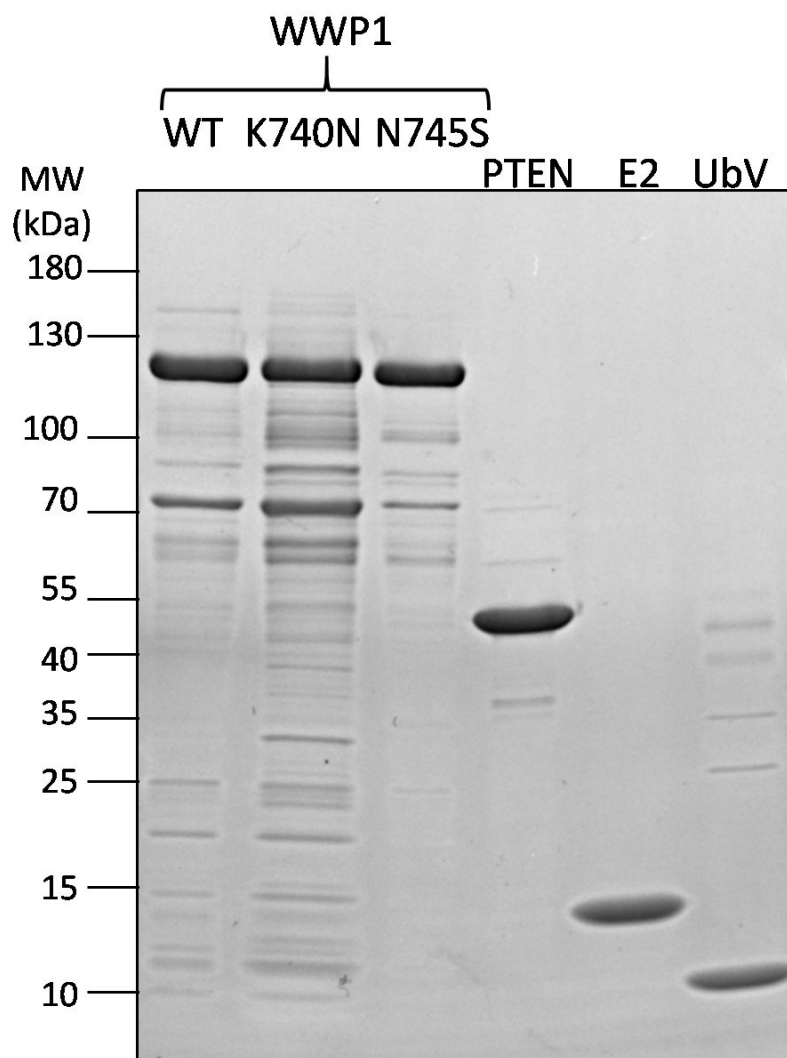


Figure S1. Coomassie stained SDS-PAGE showing purified proteins that were used for ubiquitination assays with WWP1.