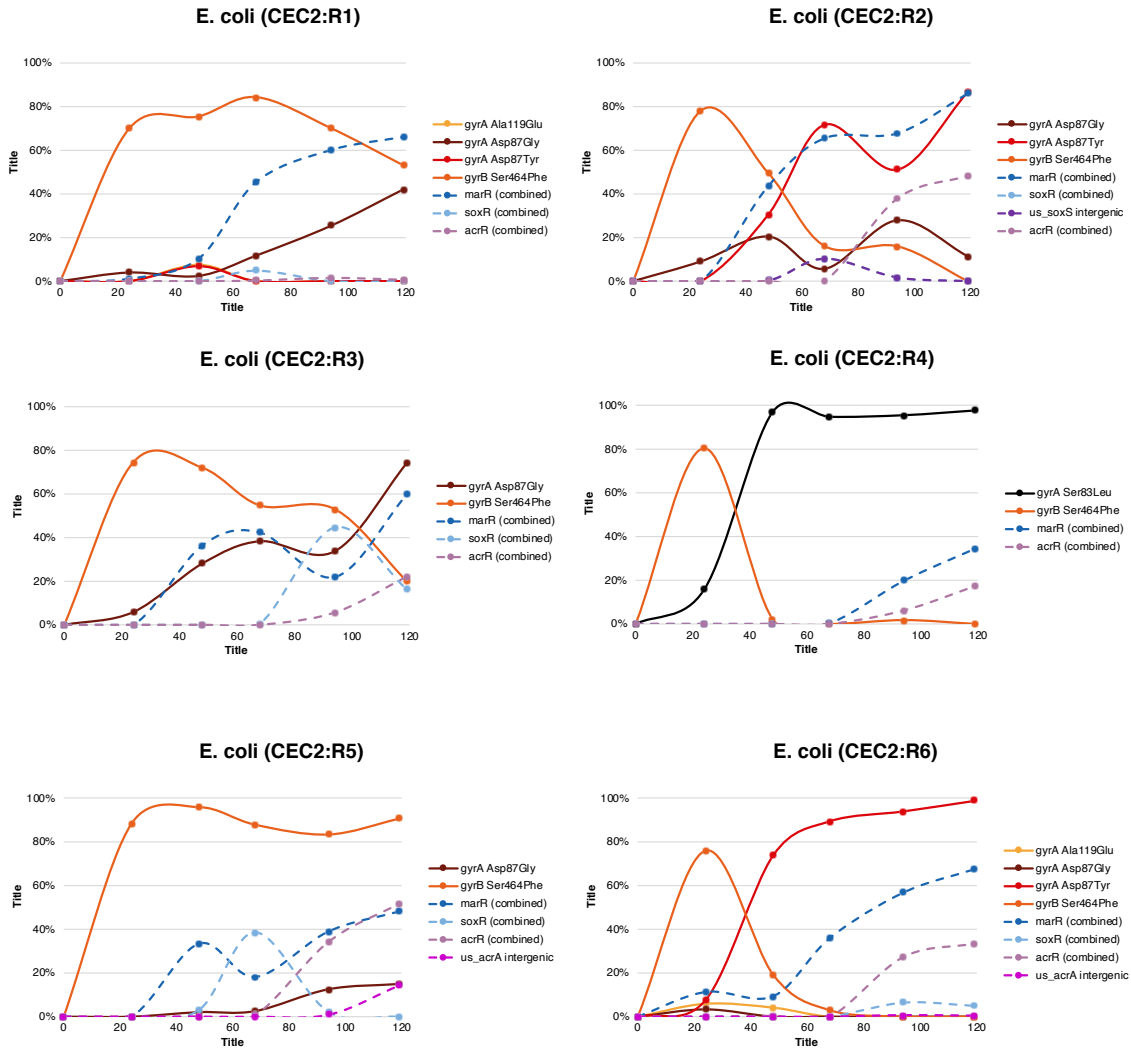
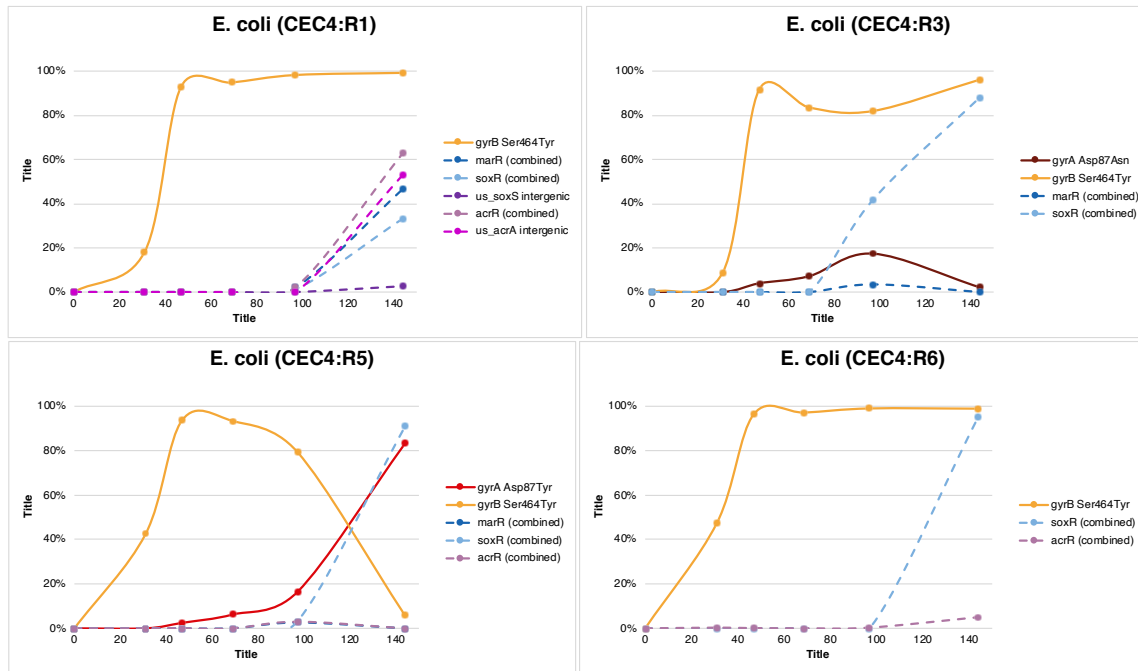


Supplementary Figure S4. Population dynamics of experimental evolution of ciprofloxacin resistance in (A) *Escherichia coli* BW25113, CEC-2 run; (B) *Escherichia coli* BW25113, CEC-4 run; (C) *Acinetobacter baumannii* ATCC17978, CAB-1 run; (D) *Pseudomonas aeruginosa* ATCC27853, PAC-1 run; (E) *Pseudomonas aeruginosa* ATCC27853, PAC-2 run. For each reactor in every morbidostat run, the frequency of major mutations (reaching $\geq 5\%$) in evolving bacterial populations is shown as a function of time.

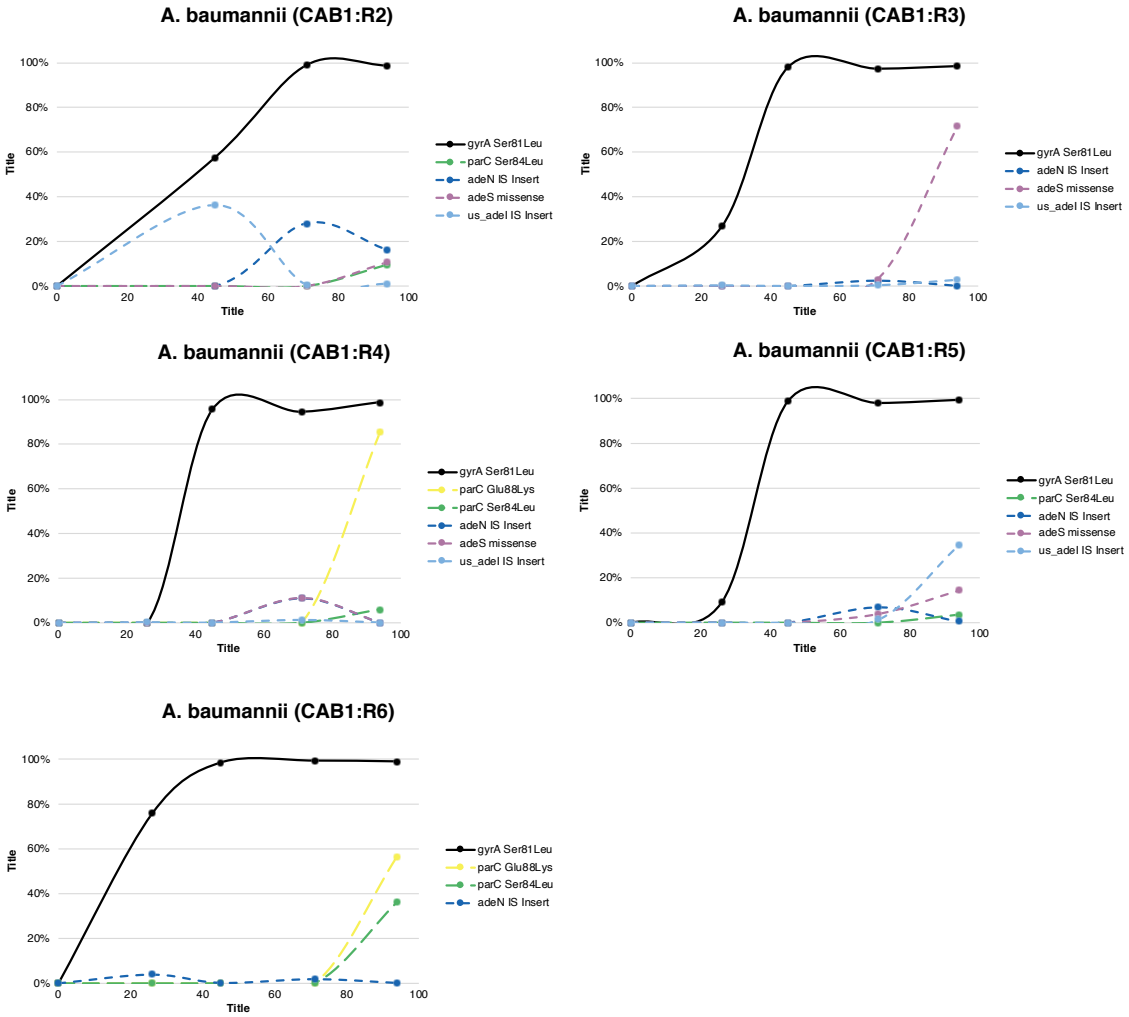
A



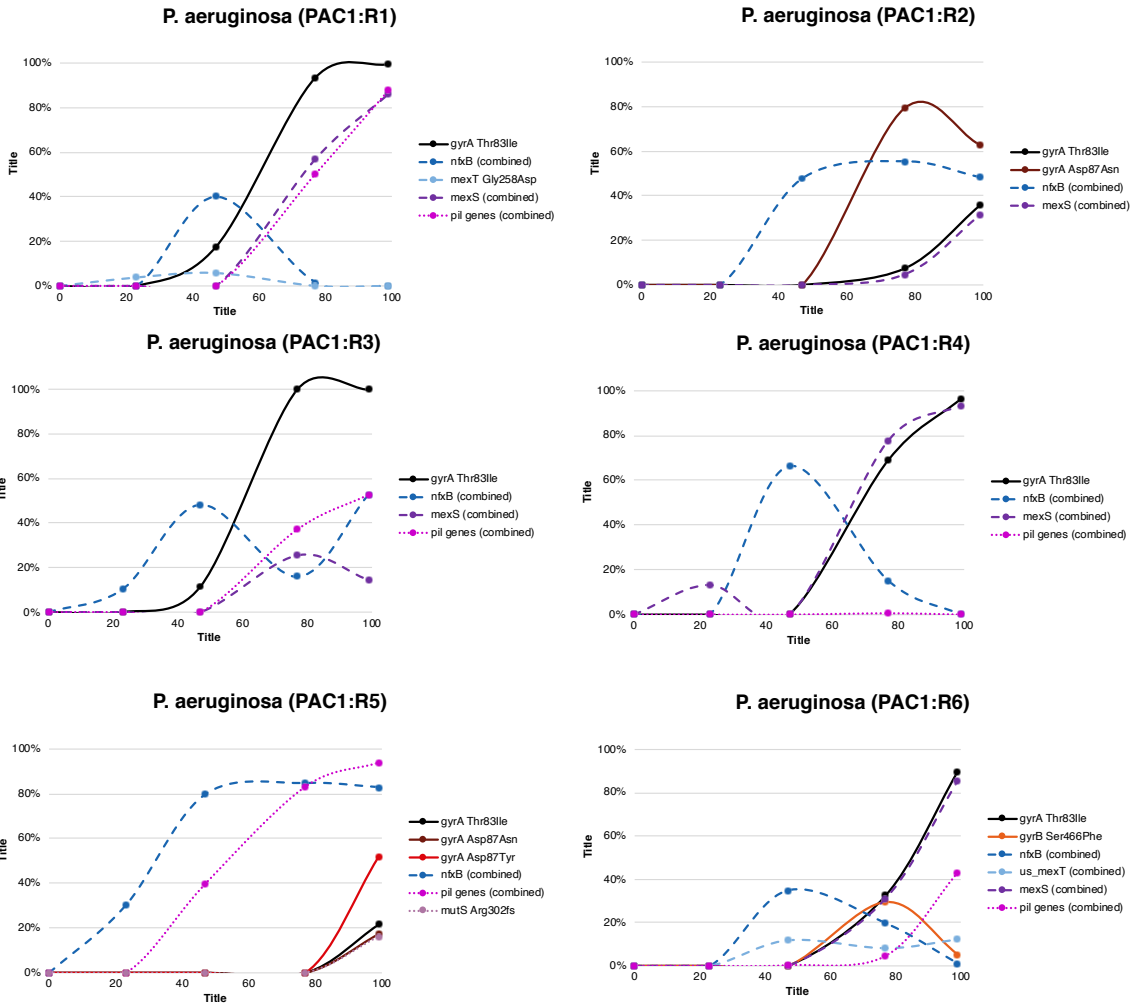
B



C



D



E

