

Supplemental Figures for:
Pre-emptive Versus Reactive Topical Clobetasol for Regorafenib-Induced Hand-Foot Reactions: A Pre-Planned Analysis of the ReDOS Trial
Aminah Jatoi et al.

Figure S1. Exploratory quality of life data for all 4 arms showed no major differences between study arms.

Supplementary Figure 1: Quality of Life in all 4 Study Arms

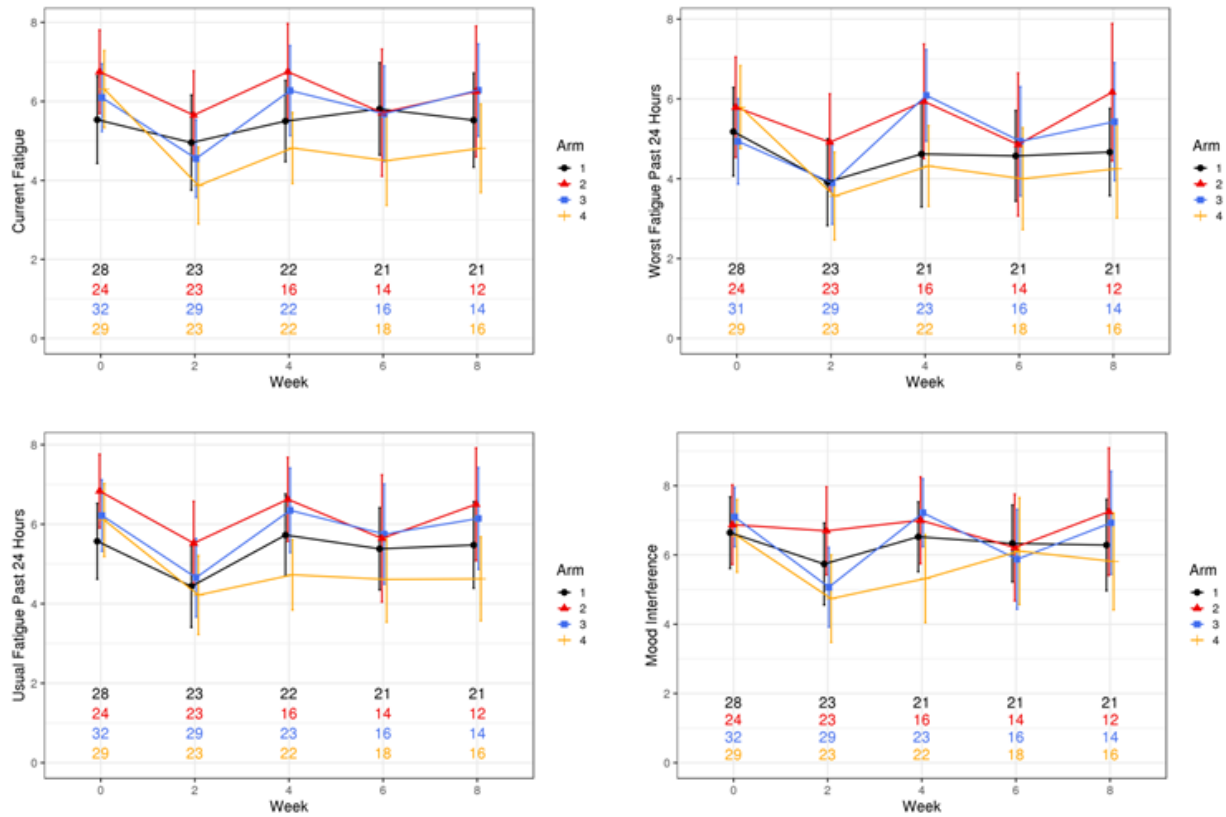


Figure S1a.

Supplemental Figures for:
Pre-emptive Versus Reactive Topical Clobetasol for Regorafenib-Induced Hand-Foot Reactions: A Pre-Planned Analysis of the ReDOS Trial
Aminah Jatoi et al.

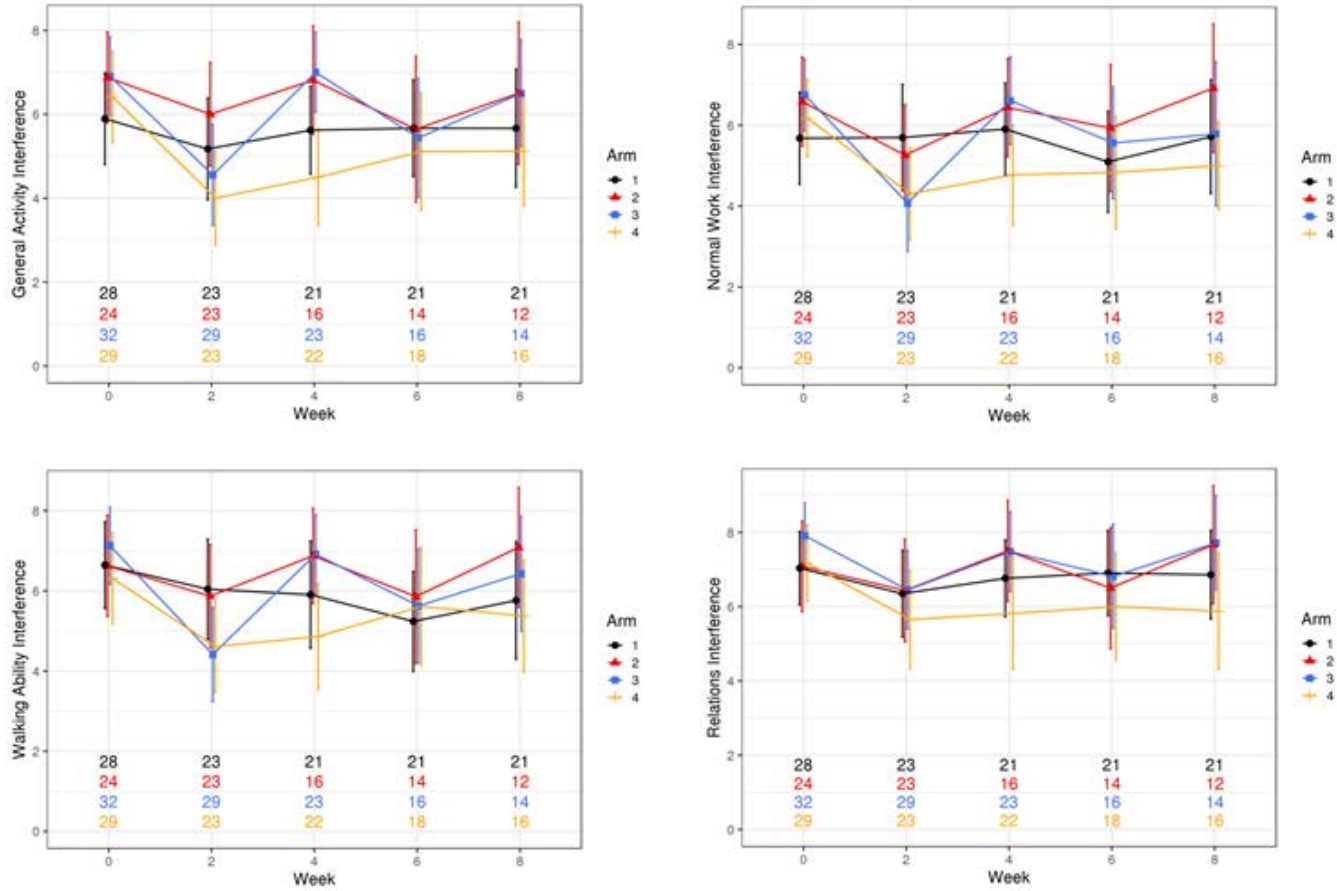


Figure S1b

Supplemental Figures for:
Pre-emptive Versus Reactive Topical Clobetasol for Regorafenib-Induced Hand-Foot Reactions: A Pre-Planned Analysis of the ReDOS Trial
Aminah Jatoi et al.

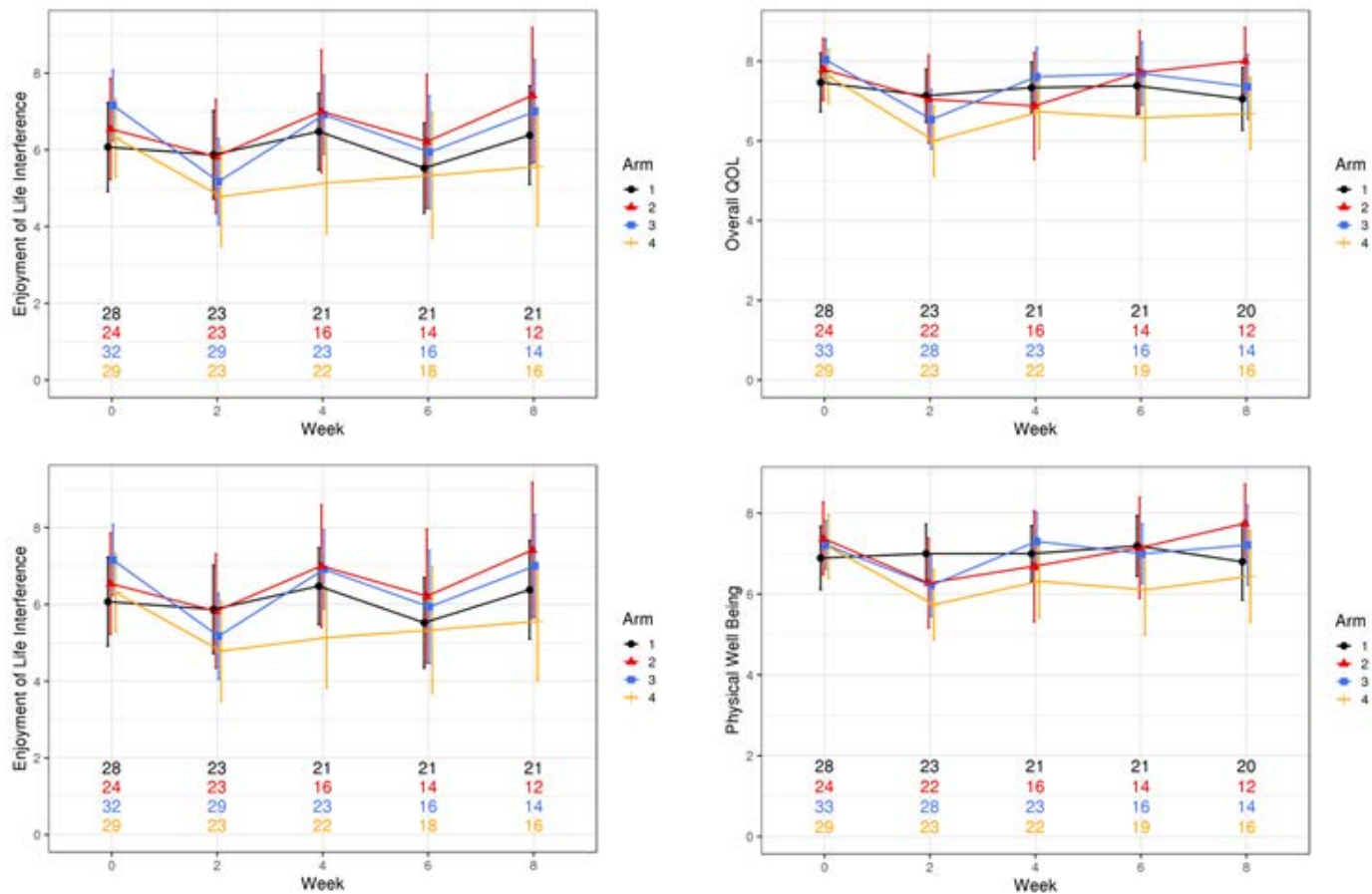


Figure S1c

Supplemental Figures for:
Pre-emptive Versus Reactive Topical Clobetasol for Regorafenib-Induced Hand-Foot Reactions: A Pre-Planned Analysis of the ReDOS Trial
Aminah Jatoi et al.

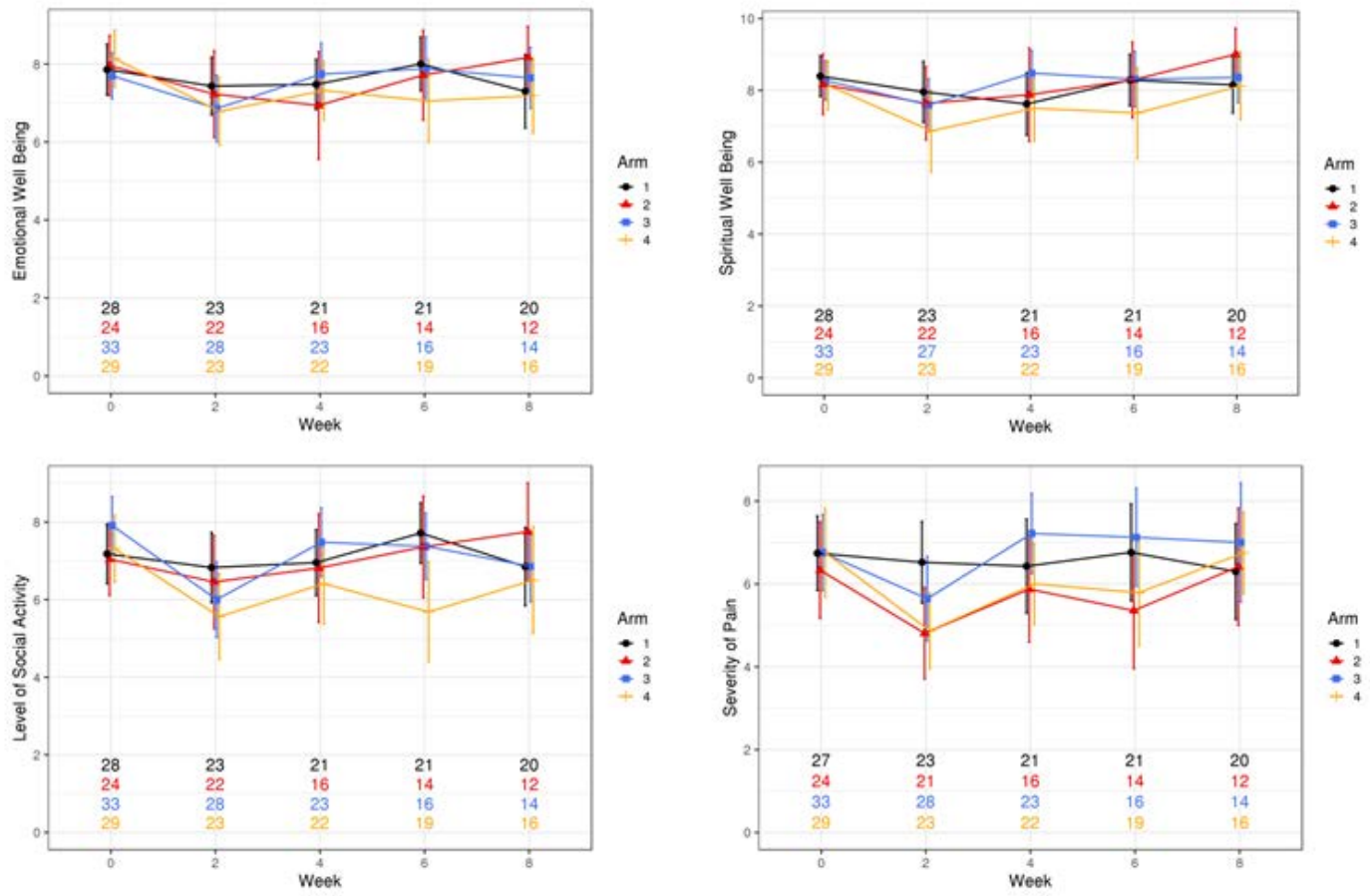


Figure S1d

Supplemental Figures for:
Pre-emptive Versus Reactive Topical Clobetasol for Regorafenib-Induced Hand-Foot Reactions: A Pre-Planned Analysis of the ReDOS Trial
Aminah Jatoi et al.

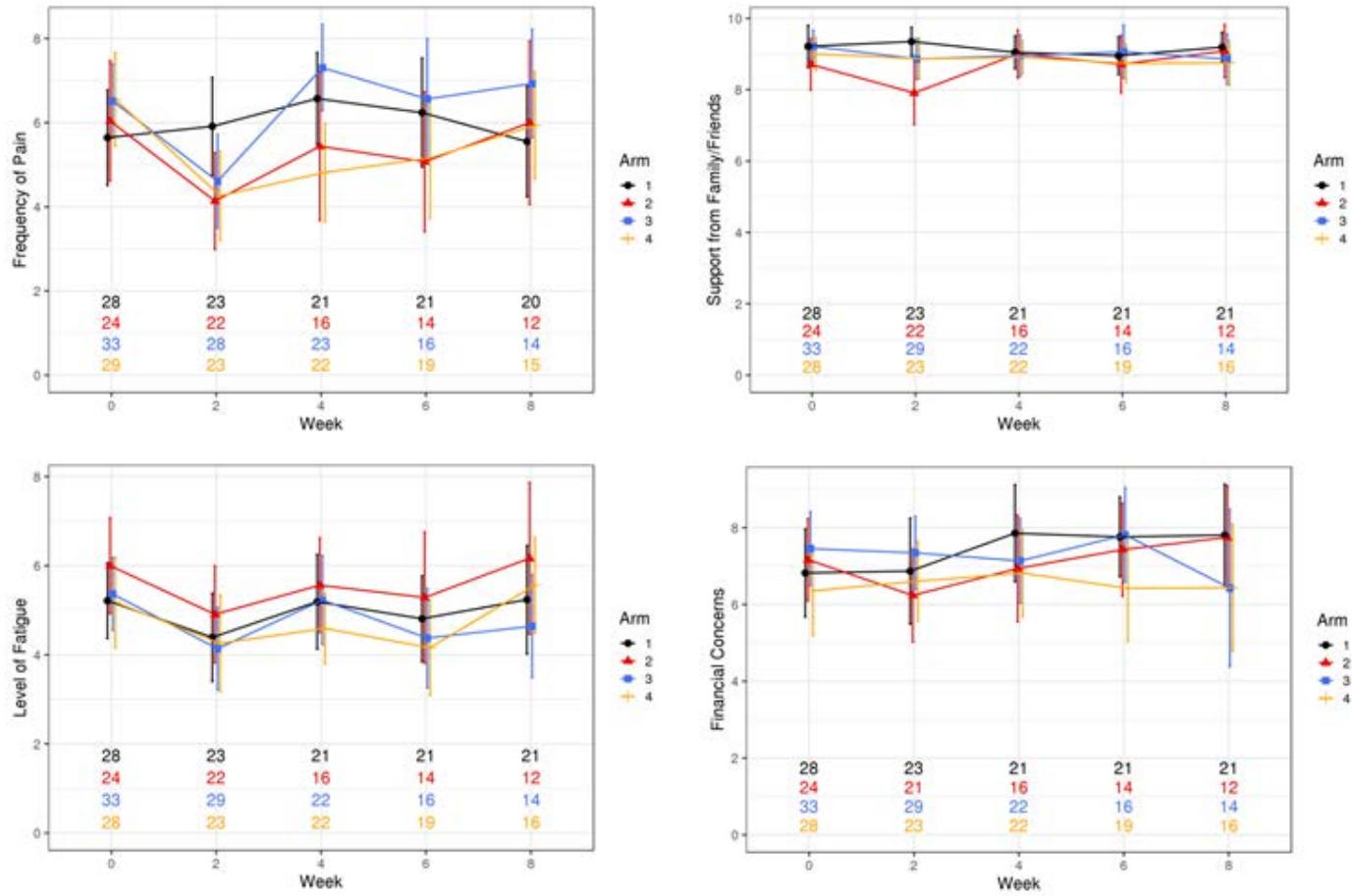


Figure S1e

Supplemental Figures for:
Pre-emptive Versus Reactive Topical Clobetasol for Regorafenib-Induced Hand-Foot Reactions: A Pre-Planned Analysis of the ReDOS Trial
Aminah Jatoi et al.

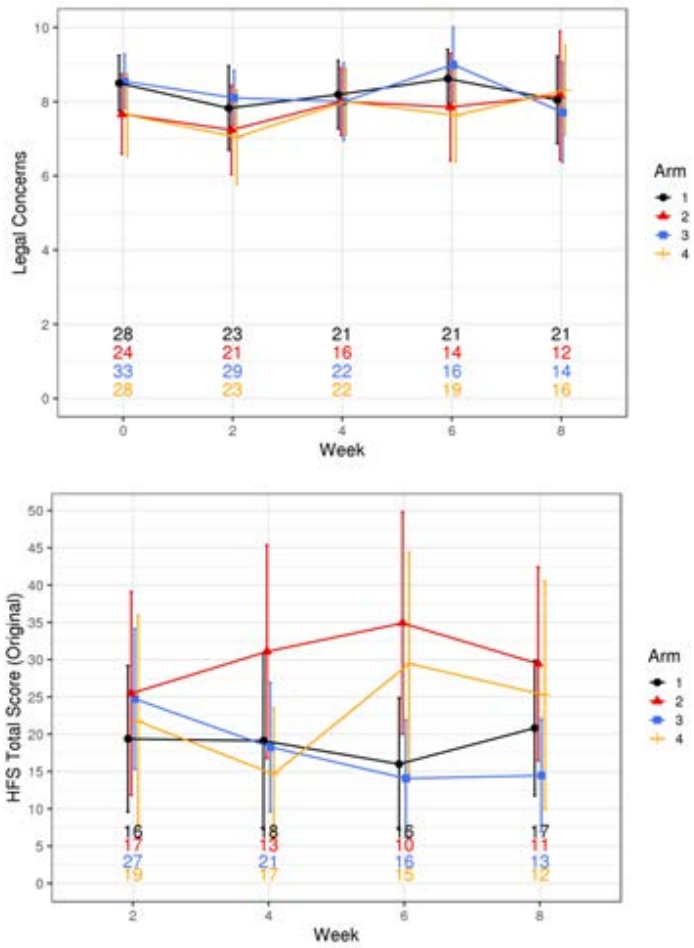


Figure S1f.