

Supplementary Material

Supplementary Table I. Baseline demographics in patients included versus excluded from our cohort

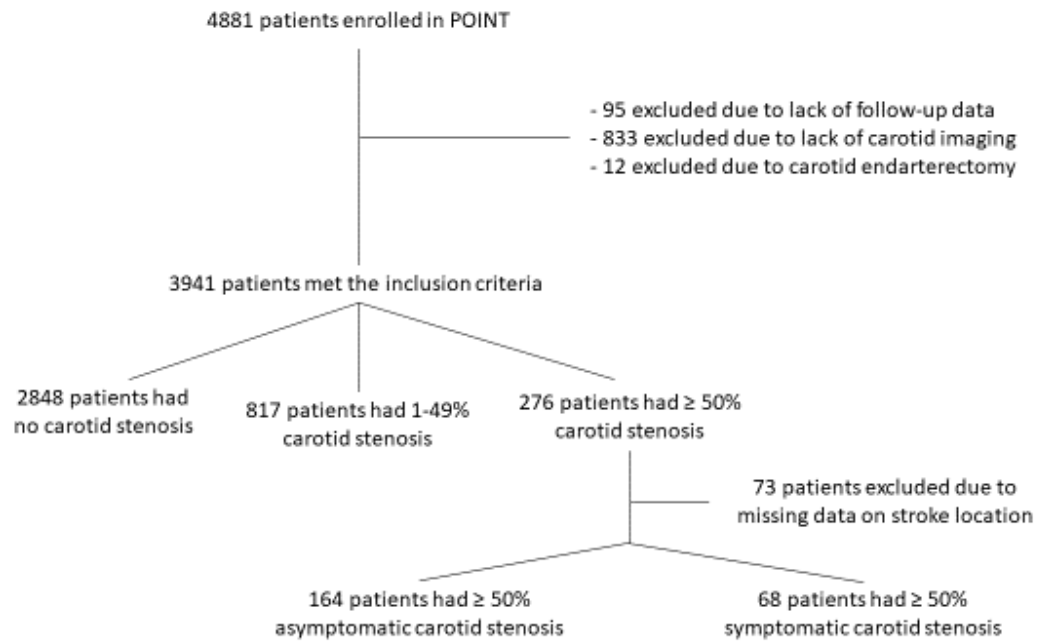
Variable	Include (n=3,941)	Excluded (n=940)	p value*
Age	64.6±13.0	64.6±13.9	0.894
Male sex	2,196 (55.7%)	490 (52.1%)	0.047
Race			
White	2,924 (74.2%)	631 (67.1%)	<0.001
Black	739 (18.8%)	227 (24.1%)	
Asian	119 (3.0%)	25 (2.7%)	
Other	159 (4.0%)	57 (6.1%)	
Hispanic ethnicity	278 (7.1%)	109 (11.6%)	<0.001
Final diagnosis of infarct (n=4,876)	1,498 (38.1%)	295 (31.4%)	<0.001
Hypertension (n=4,860)	2,708 (69.0%)	665 (71.1%)	0.204
Diabetes (n=4,872)	1,050 (26.7%)	290 (30.9%)	0.010
Atrial fibrillation (n=4,867)	37 (0.9%)	12 (1.3%)	0.348
Coronary artery disease (n=4,869)	397 (10.1%)	100 (10.7%)	0.601
Congestive heart failure (n=4,874)	99 (2.5%)	27 (2.9%)	0.525
Statin at 7 days from randomization (n=4,744)	3,107 (79.4%)	649 (77.9%)	0.323
Smoking status (n=4,877)			
Never	2,055 (52.2%)	486 (51.9%)	0.679
Past	1,083 (27.5%)	249 (26.6%)	
Current	802 (20.3%)	202 (21.6%)	
NIH Stroke Scale at randomization (n=3,484)	1, 0-2	1, 0-2	0.287
First measured systolic blood pressure (n=4,877)	161.8±27.5	161.3±28.4	0.673
First measured diastolic blood pressure (n=4,877)	88.1±16.8	87.7±17.7	0.510
Baseline glucose (n=4,878)	130.2±60.4	131.9±62.2	0.452
Clopidogrel treatment arm	1,969 (50.0%)	463 (49.3%)	0.697

* Binary variables presented as n (%); ordinal variables as median, IQR; interval variables as mean±standard deviation. P values calculated with the chi-squared test for binary variables, the Wilcoxon rank sum test for ordinal variables, and Student's t-test for interval variables.

Supplementary Table II. Multivariate Coxmodel fit to the outcome of ischemic stroke during follow-up.

Variable	Hazard Ratio	95% CI	p value
Age	1.01	1.00-1.02	0.069
Female sex	1.02	0.77-1.36	0.889
Race			
White	Ref	-	-
Black	1.73	1.24-2.41	0.001
Asian	0.37	0.09-1.51	0.168
Other	1.45	0.75-2.78	0.267
Hispanic ethnicity	0.68	0.34-1.34	0.264
Acute stroke as index event	2.72	2.04-3.63	<0.001
Diabetes	1.45	1.08-1.95	0.015
Hypertension	1.26	0.89-1.78	0.200
Smoking status			
Never	Ref	-	-
Past	0.81	0.58-1.14	0.230
Current	1.01	0.70-1.45	0.976
Statin therapy at day 7	1.36	0.90-2.05	0.143
Clopidogrel treatment	0.71	0.54-0.94	0.015
Stenosis category			
<50%	Ref	-	-
≥50%	2.45	1.68-3.57	<0.001
Stenosis category and symptomatic status			
<50%	Ref	-	-
≥50% asymptomatic	2.54	1.52-4.23	<0.001
≥50% symptomatic	3.50	2.06-5.98	<0.001

Supplementary Figure I. Study CONSORT



Supplementary Figure II. Kaplan-Meier curves for ischemic stroke events within 90 days, shown stratified by no stenosis, 1-49% stenosis, and $\geq 50\%$.

