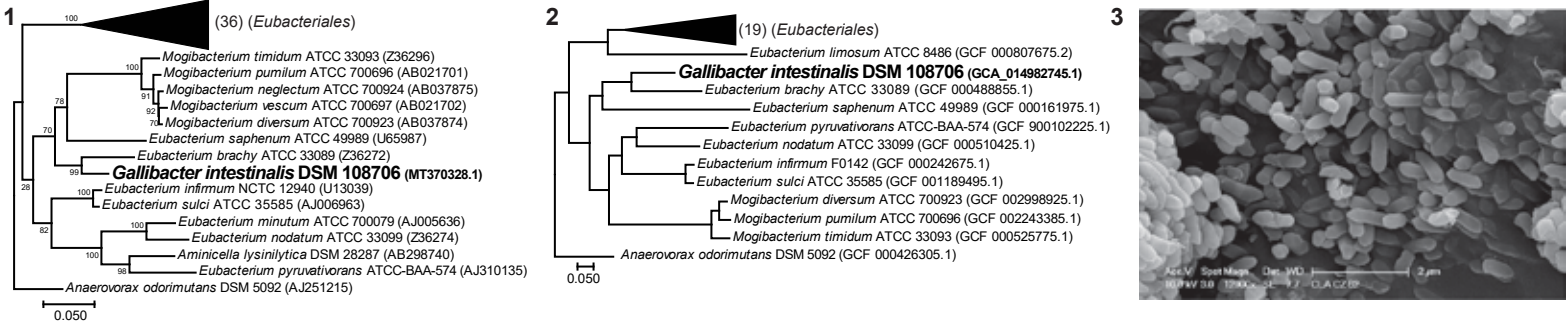
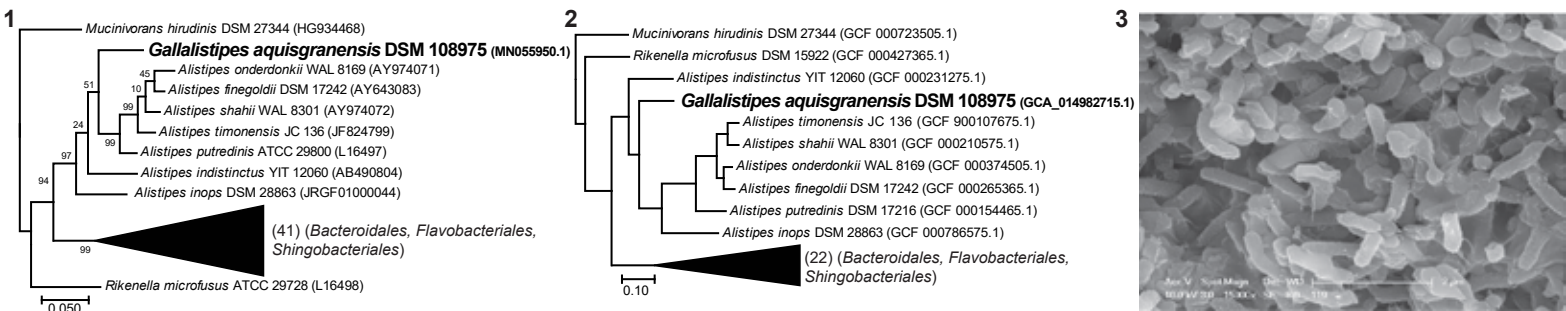


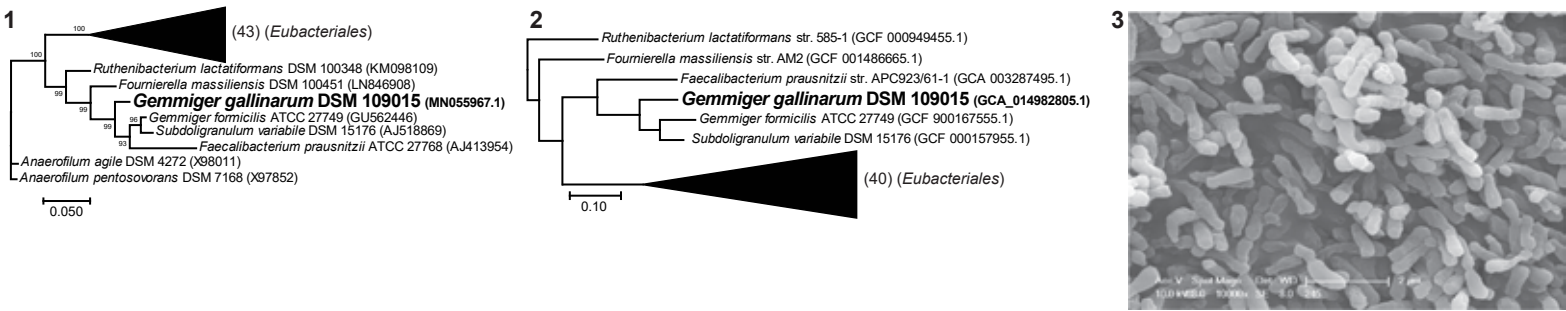
Suppl. Fig. S2 A 16S rRNA gene-based phylogenetic (1) and phylogenomic (2) trees; electron micrographs (3) of *Gallibacter intestinalis* gen.nov., sp.nov.



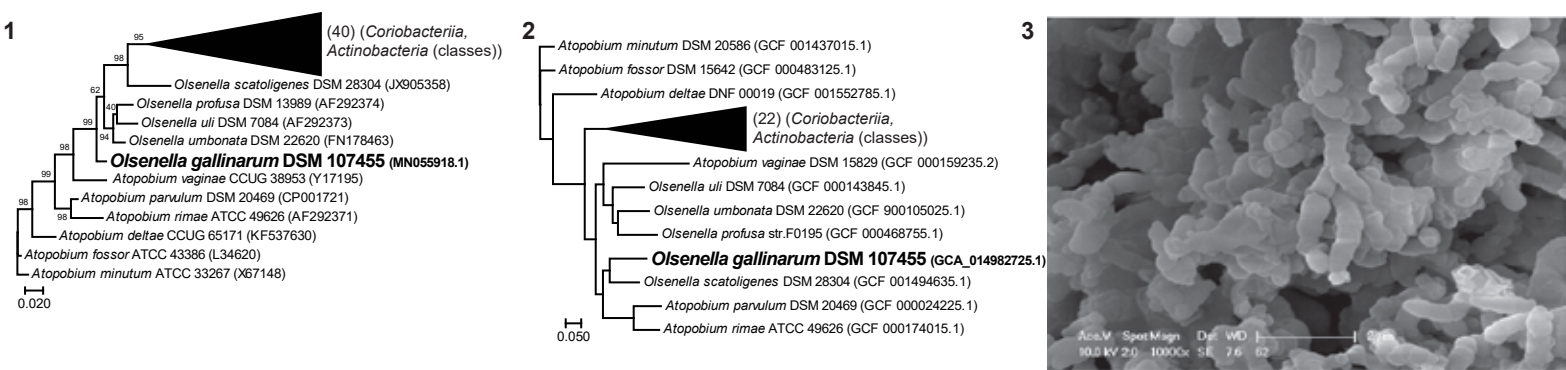
Suppl. Fig. S2 B 16S rRNA gene-based phylogenetic (1) and phylogenomic (2) trees; electron micrographs (3) of *Gallistipes aquisgranensis* gen.nov., sp.nov.



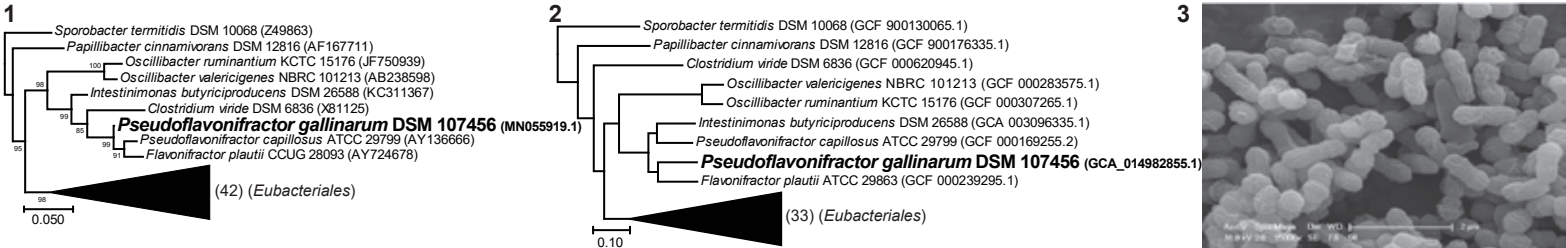
Suppl. Fig. S2 C 16S rRNA gene-based phylogenetic (1) and phylogenomic (2) trees; electron micrographs (3) of *Gemmiger gallinarum* sp.nov.



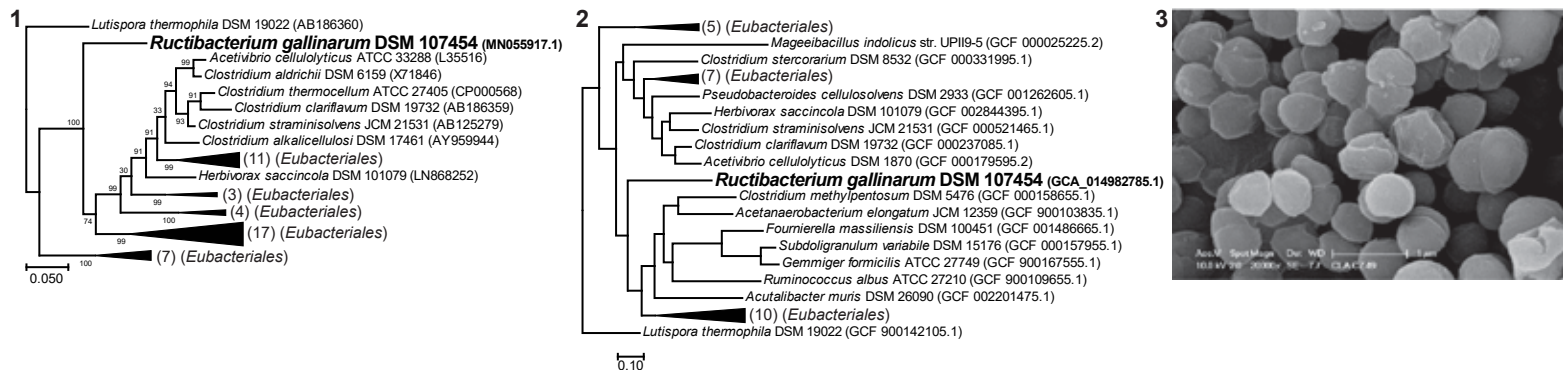
Suppl. Fig. S2 D 16S rRNA gene-based phylogenetic (1) and phylogenomic (2) trees; electron micrographs (3) of *Olsenella gallinarum* sp.nov.



Suppl. Fig. S2 E 16S rRNA gene-based phylogenetic (1) and phylogenomic (2) trees; electron micrographs (3) of *Pseudoflavonifractor gallinarum* sp.nov.



Suppl. Fig. S2 F 16S rRNA gene-based phylogenetic (1) and phylogenomic (2) trees; electron micrographs (3) of *Ructibacterium gallinarum* gen.nov, sp.nov.



Suppl. Fig. S2 G 16S rRNA gene-based phylogenetic (1) and phylogenomic (2) trees; electron micrographs (3) of *Sellimonas monacensis* sp.nov.

