

Suppl. Fig. S3: Identification of strain Cla-CZ-1 (=DSM 109009) as a member of the genus *Escherichia*

Identification methods:

MALDI-TOF

Escherichia coli

16S rRNA gene sequence identities

Escherichia marmotae 99.3%

Shigella flexneri 99.2%

Shigella dysenteriae 99.1%

Escherichia coli 99.0%

ANI values

Shigella flexneri 97.8%

Shigella dysenteriae 97.0%

Escherichia coli 96.6%

GTDB-Tk assignment

Escherichia flexneri

dDDH values

Shigella sonnei 88.5%

Shigella boydii 88.4%

Shigella flexneri 85.7%

Shigella dysenteriae 81.8%

Escherichia coli 73.8%

Escherichia marmotae 43.3%

G+C difference

Escherichia coli 0.15%

Shigella flexneri 0.17%

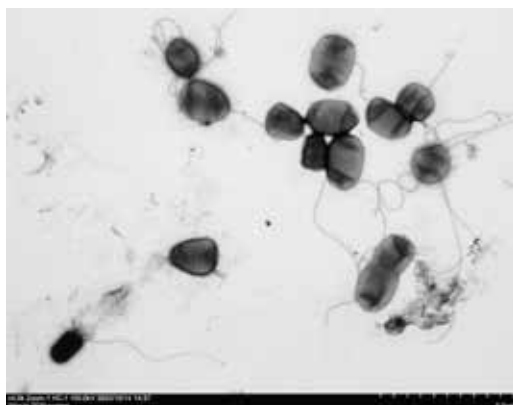
Escherichia marmotae 0.18%

TEM negative stain of strain Cla-CZ-1

Escherichia spp. are usually motile thanks to flagella whilst *Shigella* spp. are not, although their flagella genes may be expressed under rare circumstances

[Girón, Mol Microbiol., 1995 Oct, 18: (1):63-75. doi: 10.1111/j.1365-2958.1995.mmi_18010063.x.]

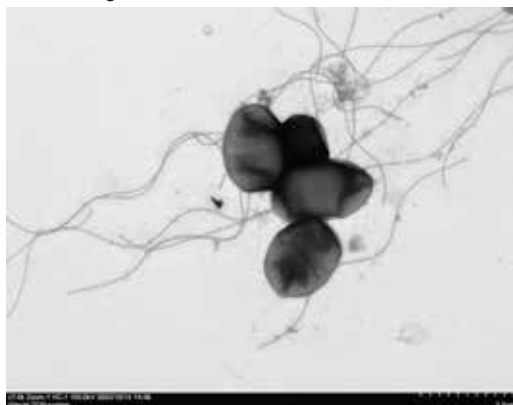
[Ragupathi et al., New Microbes New Infect, 2018 Jan, 21: 58-62, doi: 10.1016/j.nmni.2017.09.003]



4,000x magnification



6,000x magnification



7,000x magnification



12,000x magnification