

Supplementary Information

Tumor heterogeneity evaluated by computed tomography detects muscle-invasive upper tract urothelial carcinoma that is associated with inflammatory tumor microenvironment

Goto K, Honda Y, Ikeda K, Tekemoto K, Higaki T, Hayashi T, Kobatake K, Nakamura Y, Sekino Y, Inoue S, Awai K, Yasui W and Teishima J

Supplementary figures

Figure S1

Scatter plots and survival curves according to parameters obtained from texture analysis.

Figure S2

xCell scores in 32 cases of UTUC.

Figure S3

Scatter plots according to parameters obtained from texture analysis

Figure S4

Survival curves according to the number of CD68-, CD163- and CD204- positive macrophages

Figure S5

mRNA expressions in 32 cases of UTUC.

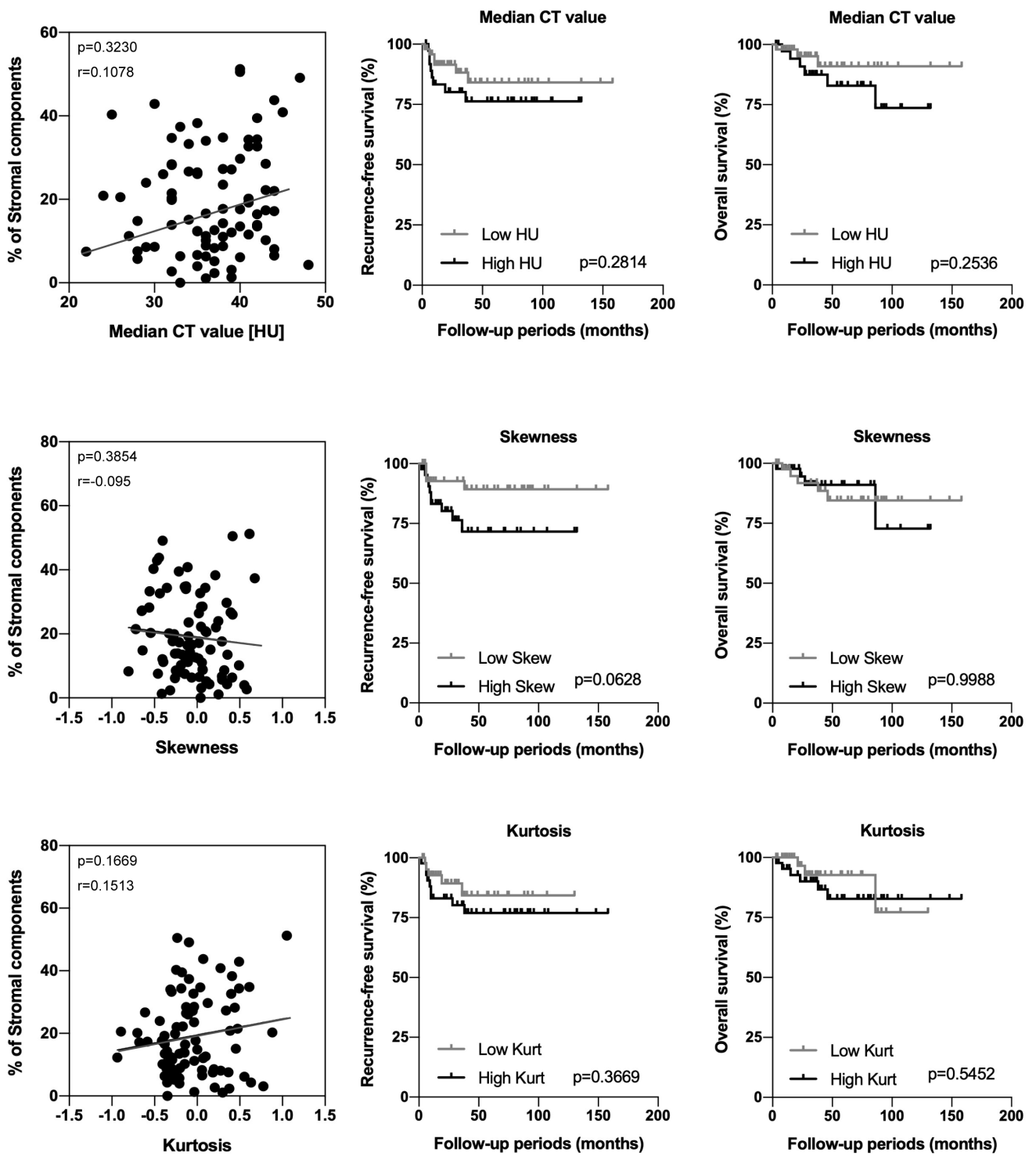


Figure S1

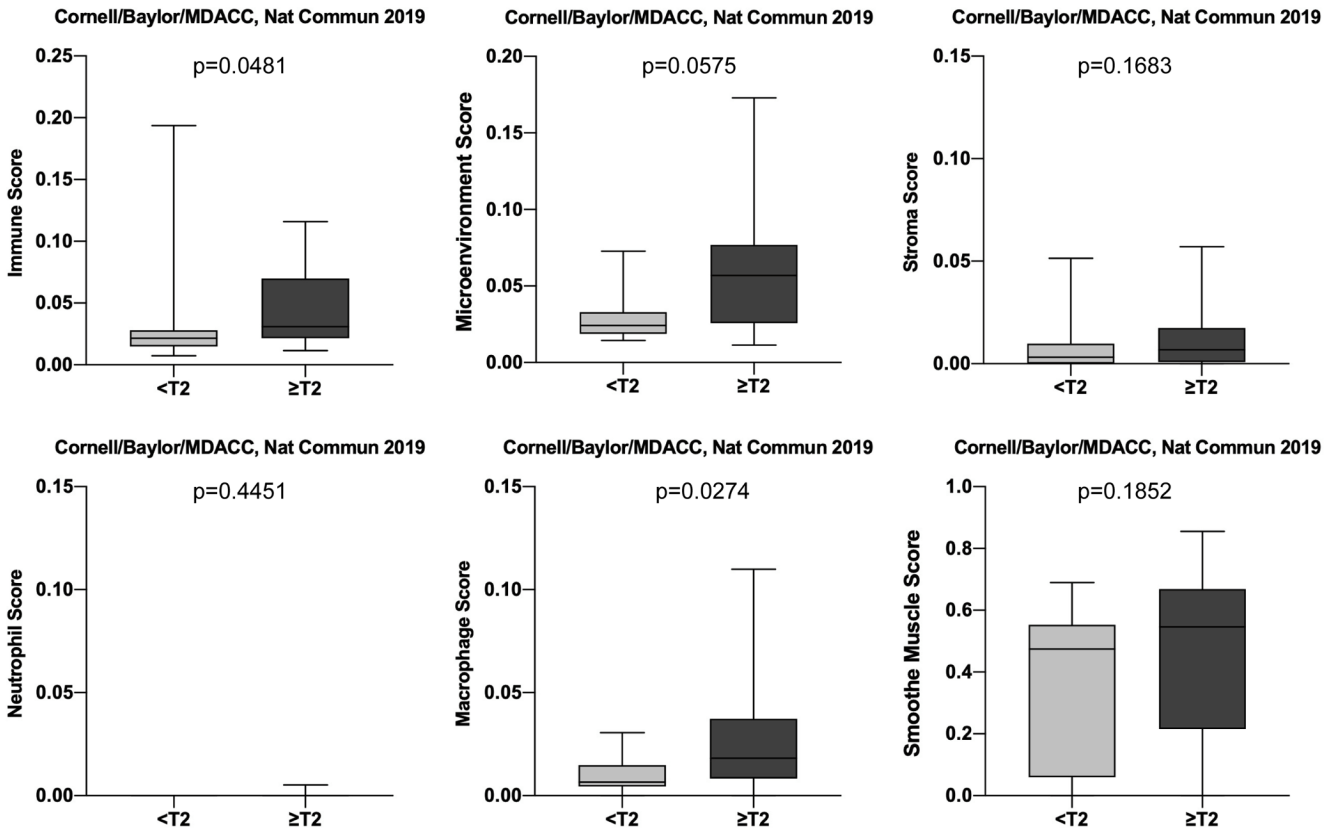


Figure S2

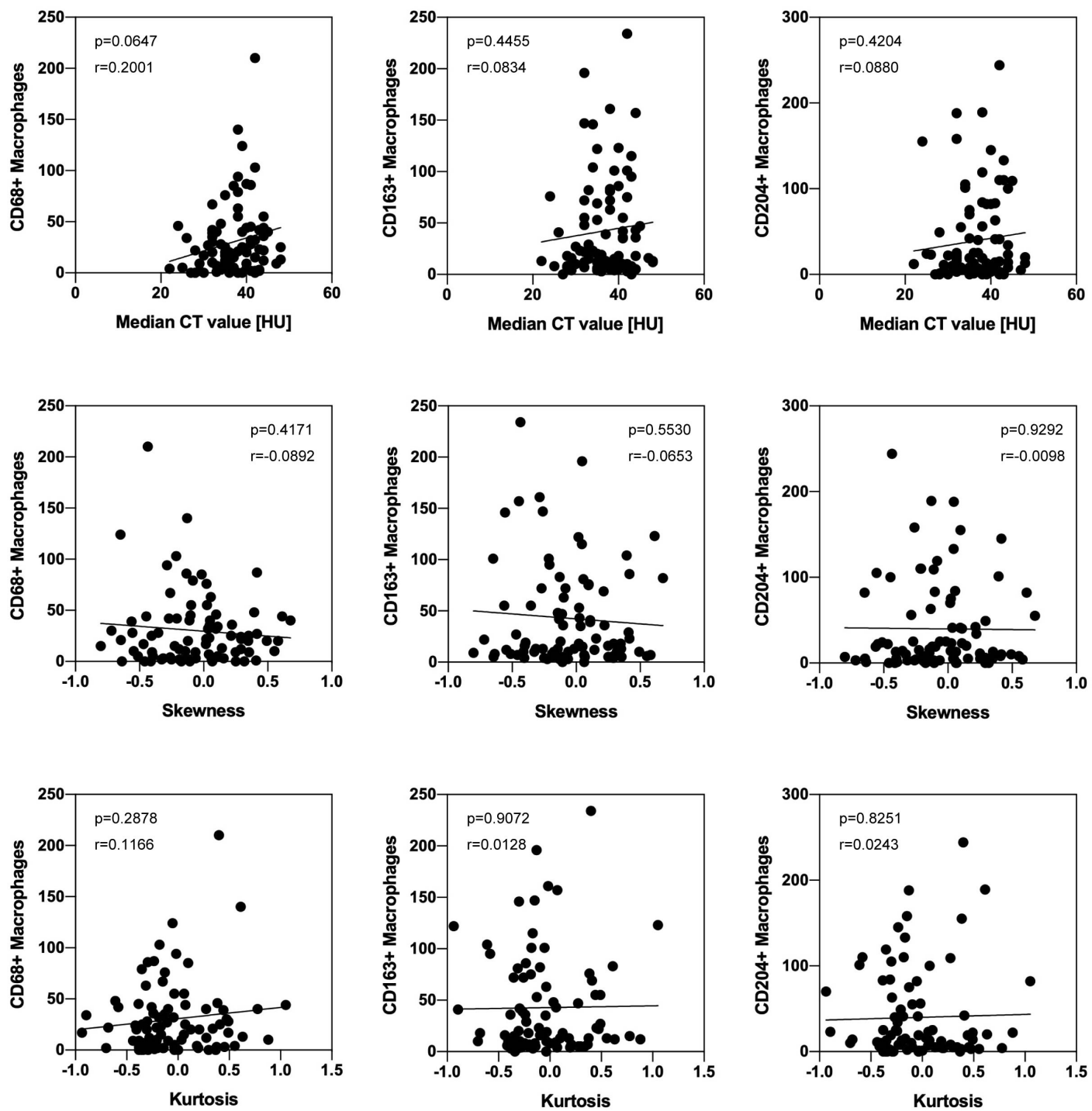


Figure S3

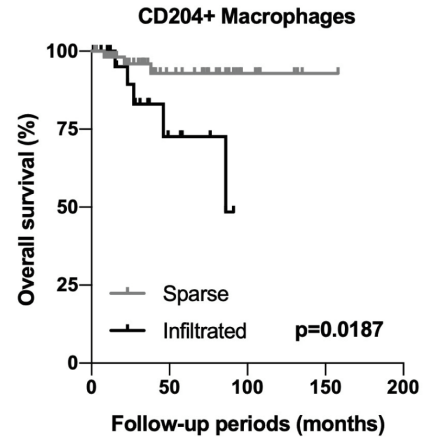
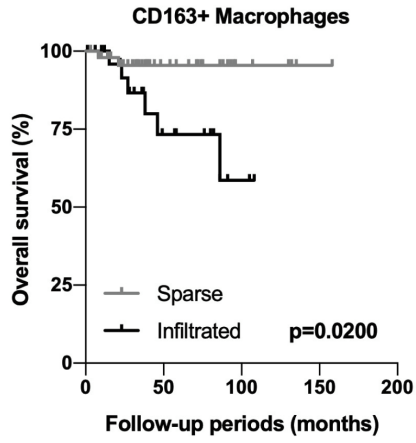
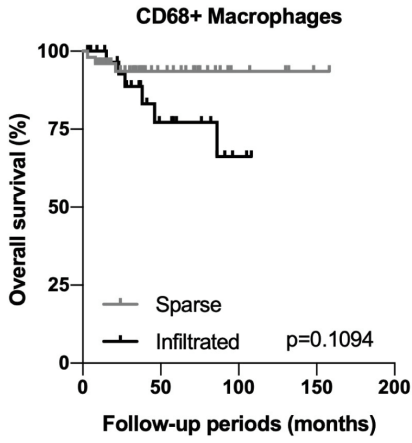
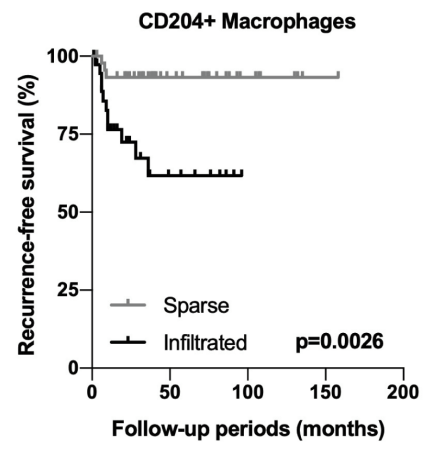
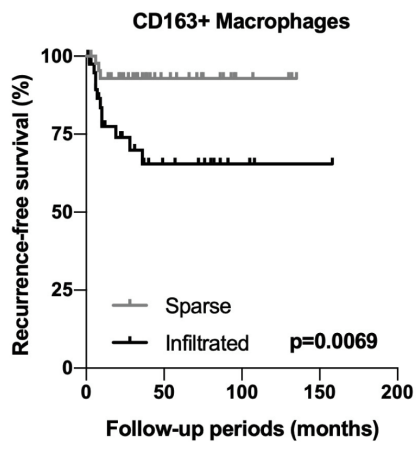
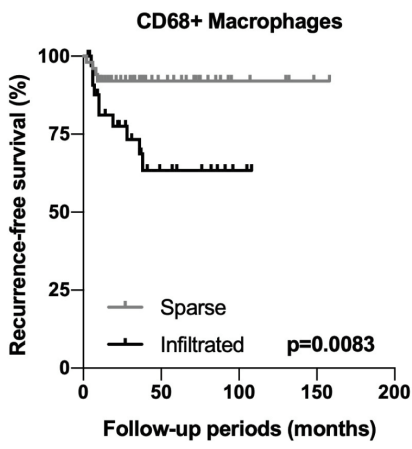


Figure S4

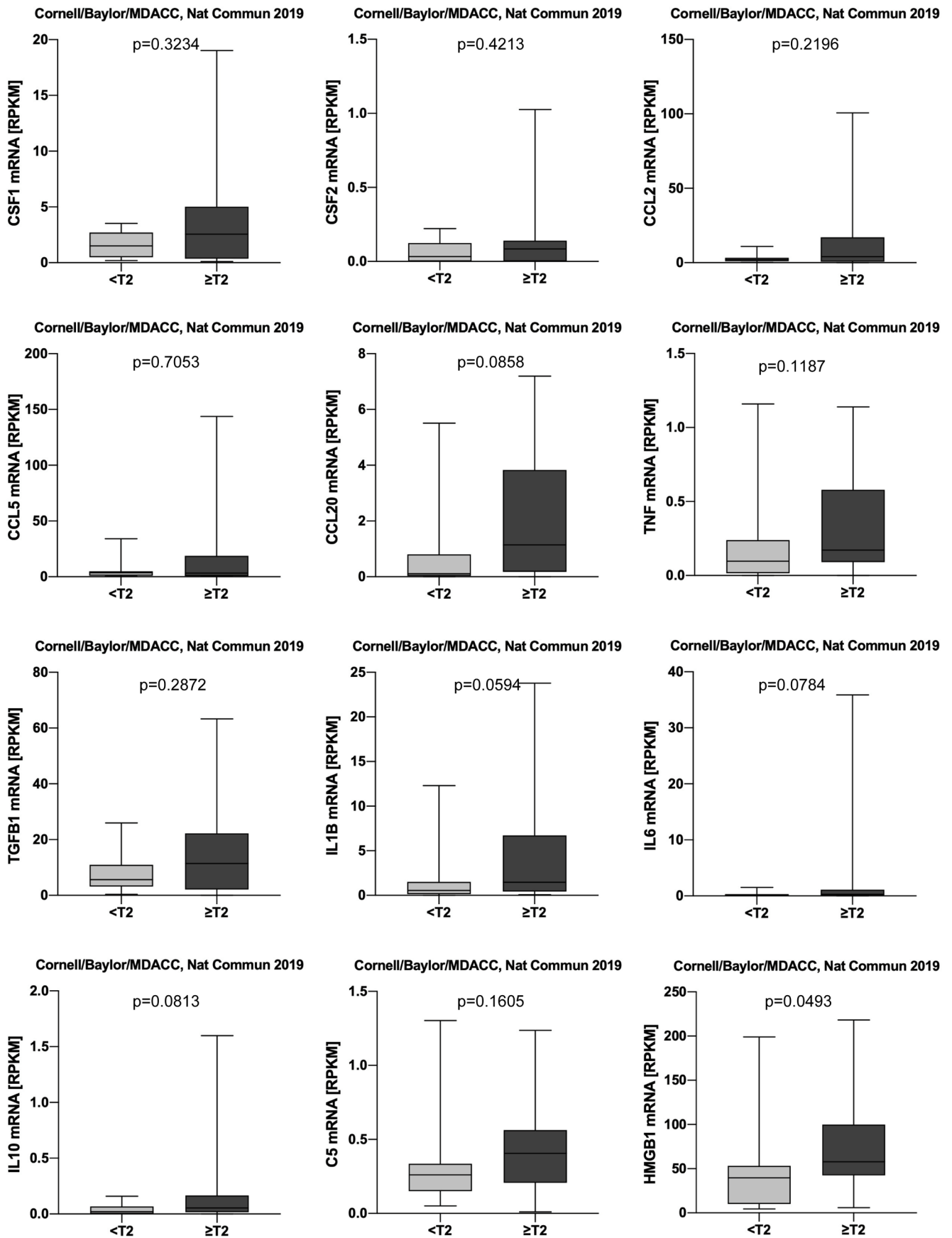


Figure S5

Supplementary figure legends

Figure S1

Scatter plots comparing CT attenuation number, skewness and kurtosis and the amount of stromal components and Kaplan-Meier analysis according to CT attenuation number, skewness and kurtosis.

Figure S2

Estimations of xCell score in 32 cases of UTUC (Cornell/Baylor/MDACC, Nat Commun 2019). Immune score, microenvironment score, stroma score, neutrophil score, macrophage score and smooth muscle score were compared.

Figure S3

Relationships between CT attenuation number, skewness and kurtosis and the number of CD68-, CD163- and CD204- positive macrophages. Correlations were evaluated using Pearson correlation coefficients.

Figure S4

Kaplan-Meier analysis according to the number of infiltrating CD68-, CD163- and CD204- positive macrophages. Recurrence-free survival and overall survival were examined.

Figure S5

mRNA expressions in 32 cases of UTUC (Cornell/Baylor/MDACC, Nat Commun 2019). Datasets were obtained from cBioportal. org (<https://www.cbioportal.org>). Genes involved in macrophage recruitment were analyzed.

Table S1.

Relationships between clinicopathological parameters and CD68-, CD163- and CD204-positive macrophages

	CD68+ macrophage	p-value	CD163+ macrophage	p-value	CD204+ macrophage	p-value
Hydronephrosis						
Mild	27.15 ± 31.21	0.3475	34.48 ± 38.24	0.0680	32.83 ± 46.22	0.1234
Severe	36.03 ± 43.71		59.78 ± 64.81		53.93 ± 62.22	
Urine cytology						
Negative	20.13 ± 21.67	0.0127	20.33 ± 32.63	0.0009	20.33 ± 32.63	0.0009
Positive	38.49 ± 42.72		56.09 ± 60.35		56.09 ± 60.35	
T stage						
Ta-T1	15.36 ± 18.08	<0.0001	18.27 ± 20.49	<0.0001	12.24 ± 16.66	<0.0001
T2-T4	49.24 ± 43.38		74.41 ± 57.56		75.49 ± 61.27	
Histological grade						
Low	14.21 ± 19.03	0.0003	13.45 ± 16.04	<0.0001	8.72 ± 10.59	<0.0001
High	37.95 ± 39.34		57.16 ± 53.78		55.09 ± 57.99	
Lymphovascular invasion						
Not evident	23.24 ± 30.88	0.0208	29.38 ± 34.68	0.0030	29.22 ± 43.71	0.0193
Evident	44.59 ± 41.08		70.93 ± 63.29		61.81 ± 62.72	
Concomitant CIS						
No	22.63 ± 24.96	0.0200	33.14 ± 42.36	0.0135	32.44 ± 45.78	0.0414
Yes	49.96 ± 50.65		67.83 ± 58.13		58.65 ± 64.40	

CIS= carcinoma in situ

Table S2.

Relationships between tumor heterogeneity evaluated by TA and CD68-, CD163- and CD204-positive macrophages according to each indicated pathological parameter

	Ta-T1 cases			T2-T4 cases		
	Standard deviation			Standard deviation		
	Low	High	p-value	Low	High	p-value
CD68+ macrophage	10.61 ± 11.41	23.56 ± 24.11	0.0437	43.75 ± 32.60	51.88 ± 48.10	0.5502
CD163+ macrophage	13.71 ± 12.07	26.11 ± 28.72	0.0480	71.83 ± 65.88	75.64 ± 54.55	0.8641
CD204+ macrophage	9.39 ± 11.53	17.17 ± 22.56	0.0932	71.25 ± 61.27	77.52 ± 62.43	0.7748

	Low grade			High grade		
	Standard deviation			Standard deviation		
	Low	High	p-value	Low	High	p-value
CD68+ macrophage	7.89 ± 8.01	24.55 ± 26.76	0.0347	28.48 ± 28.56	45.34 ± 45.12	0.0457
CD163+ macrophage	9.61 ± 6.43	19.73 ± 24.09	0.1002	44.56 ± 53.17	67.00 ± 52.98	0.0597
CD204+ macrophage	7.56 ± 11.47	10.64 ± 9.15	0.2163	40.40 ± 51.98	66.56 ± 60.61	0.0427

	LVI not evident			LVI evident		
	Standard deviation			Standard deviation		
	Low	High	p-value	Low	High	p-value
CD68+ macrophage	15.80 ± 20.54	34.08 ± 39.68	0.0231	37.63 ± 33.05	47.53 ± 44.52	0.5316
CD163+ macrophage	18.89 ± 20.59	44.67 ± 44.65	0.0065	78.25 ± 79.26	67.84 ± 57.53	0.7476
CD204+ macrophage	17.28 ± 28.27	46.63 ± 55.79	0.0119	67.63 ± 70.62	59.37 ± 61.00	0.7781

	CIS not evident			CIS evident		
	Standard deviation			Standard deviation		
	Low	High	p-value	Low	High	p-value
CD68+ macrophage	18.08 ± 23.08	28.32 ± 26.44	0.1122	27.63 ± 30.22	61.87 ± 56.01	0.0707
CD163+ macrophage	25.74 ± 41.02	42.39 ± 42.92	0.1242	48.25 ± 54.57	78.27 ± 59.04	0.2405
CD204+ macrophage	26.31 ± 44.91	40.11 ± 46.52	0.2400	28.13 ± 37.41	74.93 ± 70.72	0.0504

LVI = Lymphovascular invasion, CIS= carcinoma in situ

Table S3.

Relationships between HMGB1 expression and parameters obtained from texture analysis

	HMGB1 IHC		p-value
	Weak	Strong	
Median CT value [HU]	36.38 ± 5.72	37.32 ± 5.43	0.4580
Standard deviation (SD)	11.02 ± 3.57	13.80 ± 3.78	0.0011
Skewness	-0.073 ± 0.335	-0.040 ± 0.334	0.6636
Kurtosis	-0.054 ± 0.348	-0.042 ± 0.440	0.8933

HMGB1=high mobility group box 1, IHC=immunohistochemistry, CT=computed tomography, HU=Hounsfield Unit.