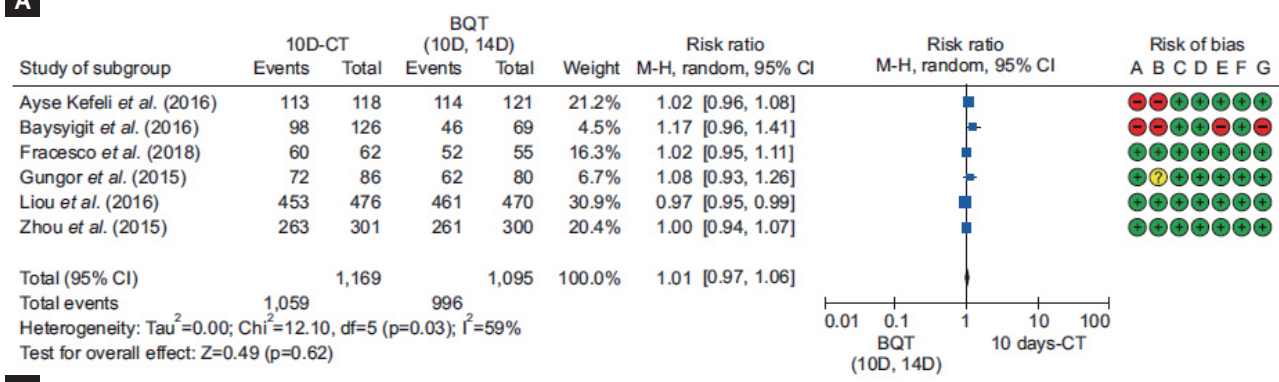


A



B

Supplementary Figure 8. Comparison between 10-day concomitant therapy and 10-/14-day bismuth quadruple therapy (A) intention-to-treat analysis (B) per protocol analysis Risk of bias: A, random sequence generation (selection bias); B, allocation concealment (selection bias); C, blinding of participants and personnel (performance bias); D, blinding of outcome assessment (detection bias); E, incomplete outcome data (attrition bias); F, selective reporting (reporting bias); G, other bias. CT, concomitant therapy; BQT, bismuth quadruple therapy; M-H, Mantel-Haenszel; CI, confidence interval.