

Figure S1: Detection of viral RNA of the CsCMV-CM and CsCMV-NC in infected cassava leaves using RT-PCR

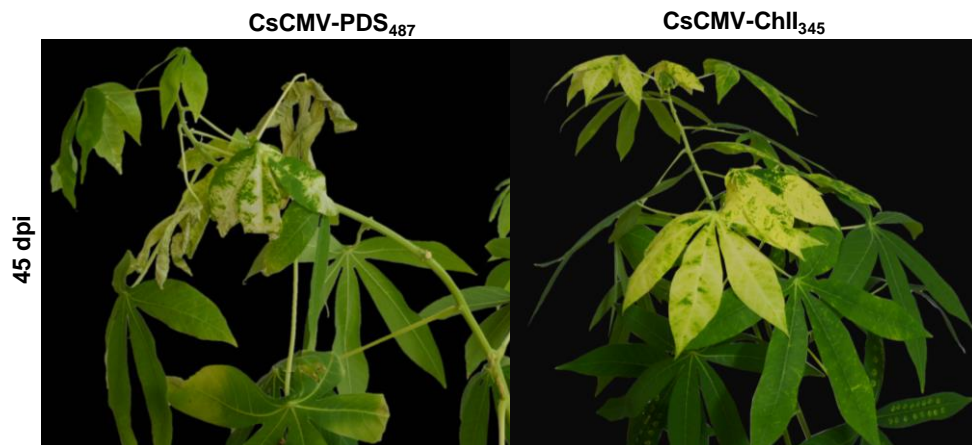


Figure S2: Silencing phenotypes in 5-month-old cassava plants induced by infection with pCsCMV-PDS₄₈₇ or pCsCMV-Chl₃₄₅ at 45 dpi.

a

Cassava <i>PDS</i>	206	CTTTGCAGGTAGTTTGTGGACTATCCTAGACCTGACATTGATAACACGGTGAATTTCT	265
<i>N.Benthamiana PDS</i>	760	CTTTAAAGGTAGTCTGCAT TGATTAT CCAAGAC CAGAGCT AGACAAT ACAGTT AACTATT	819
Cassava <i>PDS</i>	266	TGGAAGCTGCATACTTATCAGCATCC TTCCGCAATTCTCC CCGTCCAGCTAAACATTGA	325
<i>N.Benthamiana PDS</i>	820	TGGAGGCGGCGTTATTATCATCATGTTTCGTACTTCTCCACGCCAACTAAACATTGG	879
Cassava <i>PDS</i>	326	AAGTTGTGATTGCTGGGGCAGGGTTGGCTGTTTATCAACTGCGAAAATTTTGGCAGATG	385
<i>N.Benthamiana PDS</i>	880	AGATTGTTATTGCTGGTGCAGGTTTGGGTGTTTGTCTACAGCAAAATATCTGGCAGATG	939
Cassava <i>PDS</i>	386	CAGGGCAACAGCCCGTACTACTTGAGGCAAGAGAGTCTGGGTGGAAGGTGGCTGCGT	445
<i>N.Benthamiana PDS</i>	940	CTGGTCAAAAACC GATATT GCTGGAGCAAGAGATGCTCTAGSTGGGAA----GCTGCAT	995
Cassava <i>PDS</i>	446	GGAAAGATGATGATGGGGACTGGTATGAAACAGGCTTGCA	485
<i>N.Benthamiana PDS</i>	996	GGAAAGATGATGATGGAGATTGGTACGAGACTGGGTGCA	1035

Identity%=75.71

b

Cassava <i>Chll</i>	1	GCATCTTAAACAGTTCCTACTTGTGCATGCATTCCAAATCTATCAAGTAGCTGTGGCCTG	60
<i>N.Benthamiana Chll</i>	1908	GCATCTCTACGGTCCCACCTTGGGCATGCATTCCAAATCGATCAAGAAAGTTGTGGCCTA	1849
Cassava <i>Chll</i>	61	AGTCC CCTTCTT CAGGGT TGCCAGAGCCAATCAAATGAACCGTGCAGGATGTGAAATA	120
<i>N.Benthamiana Chll</i>	1848	AGTTCTCCTTCTT CAGGAT TACCCGAACCAATAAGGATAAATCGGGCAGGGTGTGATATT	1789
Cassava <i>Chll</i>	121	GAAATACCCCTCTCTCCAAGTGTCCATCCTGAGGCAAGCAGAAATCAATAGAACATCC	180
<i>N.Benthamiana Chll</i>	1788	GATATC CCCTCTCTTCAACAGTGTCCATCCC GATGCTG CAGAATC CAAAAGAACATCT	1729
Cassava <i>Chll</i>	181	ACTAAGTGGTCATCTAAAAGGTTAACTTCATCCACATAAAGAAATCCCCTATTAGCTTTA	240
<i>N.Benthamiana Chll</i>	1728	ACTAAA TGGTCGT CCAAAA GATTAACCTCATCGACATAAAGAAATCCCCTGTTAGCTTTA	1669
Cassava <i>Chll</i>	241	GCAAGAAGGCCAGGCTCAAATGCCTTGACACCTTCCGTGAGAGCCTTTTCAATATCAATT	300
<i>N.Benthamiana Chll</i>	1668	GCAAGAAGACCAGGCTCGAAAGCCTT CACACCC TCAGTAA GAGCTTTCTCAATGTCGATT	1609
Cassava <i>Chll</i>	301	GTACCAAAAACCTATCCTCTGTAGCACCTAATGGCAATCAACC	345
<i>N.Benthamiana Chll</i>	1608	GTGCCACACACCTGTCTCTCAGTAGCACCTAGCGGTAATCAACC	1564

Identity%=82.61

Figure S3: Alignment of the cassava 487-bp *PDS* (GenBank accession: XM_021757403) and 345-bp *Chll* gene fragments (GenBank accession: XM_021743433) in pCsCMV-PDS₄₈₇ and pCsCMV-Chll₃₄₅ with the *N. benthamiana PDS* (GenBank accession: DQ469932) and *Chll* (Sequence ID: Niben101Scf16898g00001.1) homologues by the Sol Genomics Network (SGN). (https://solgenomics.net/organism/Nicotiana_benthamiana/genome).

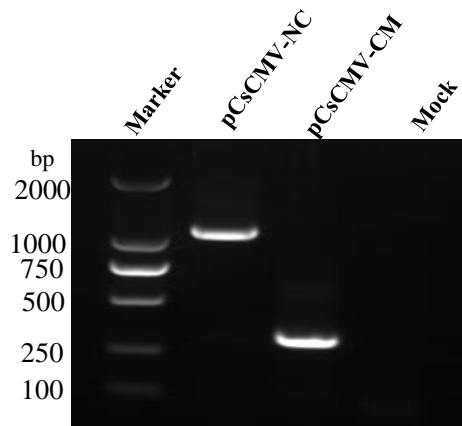


Figure S4 :Detection of viral RNA of the CsCMV-CM and CsCMV-NC in cassava storage roots using RT-PCR.