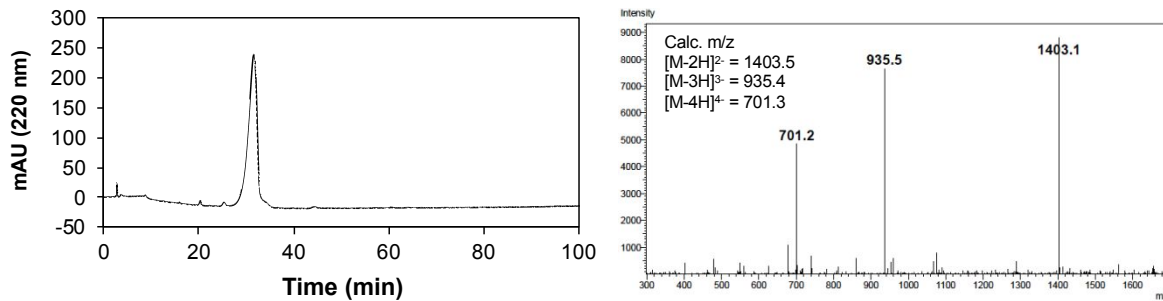


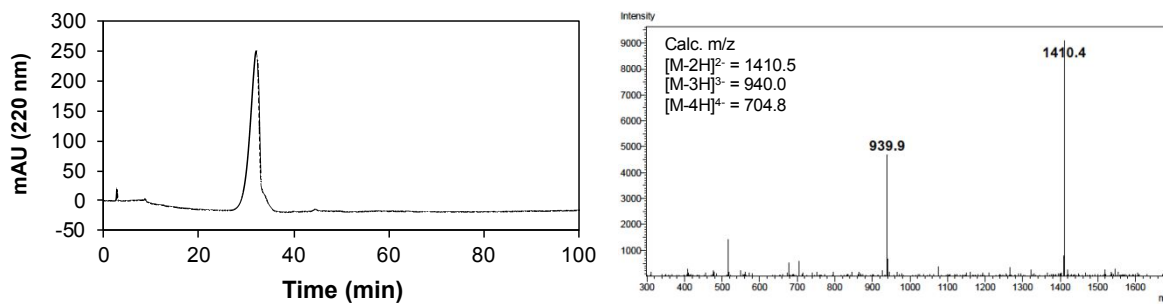
Supporting Information

Supporting Information Table of Contents		Page
Figure S1.	Analytical HPLC and ESI-mass spectra of pure peptides	S-2
Figure S2.	Rheology measurements of peptide gels	S-3
Figure S3.	2D culture of HDFs on gels with DMEM or FBS-supplemented DMEM	S-4

a. AcVES3-RGDV



b. AcVES3-RGEV



c. AcVES3

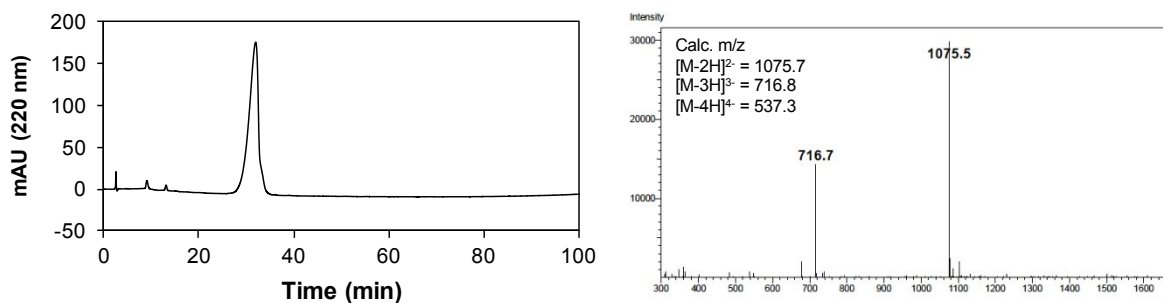
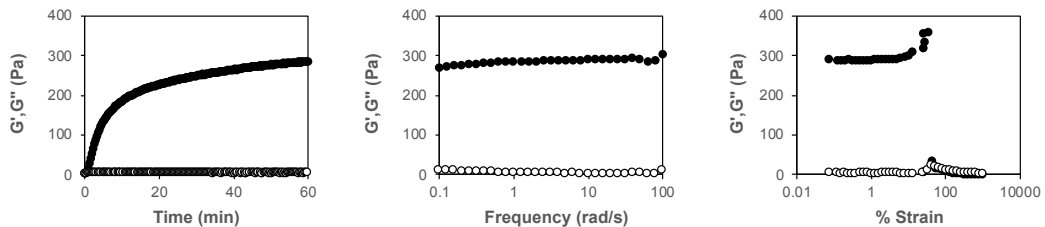
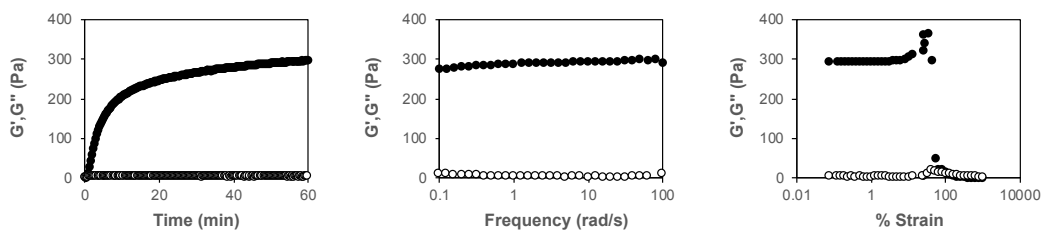


Figure S1. Analytical HPLC and ESI-mass spectra of AcVES3-RGDV (a), AcVES3-RGEV (b), and AcVES3 (c).

a. AcVES3-RGDV



b. AcVES3-RGEV



c. AcVES3

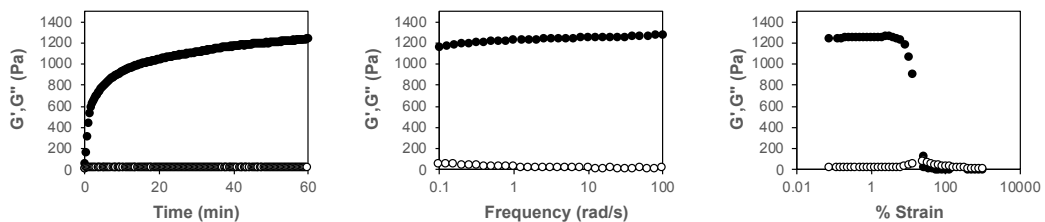


Figure S2. Dynamic time sweep (left), dynamic frequency sweep (middle), and dynamic strain sweep (right) were measured with 0.5 wt% AcVES3-RGDV (a), 0.5 wt% AcVES3-RGEV (b), and 0.5 wt% AcVES3 (c) in HEPES buffer (25 mM HEPES, 150 mM NaCl, pH 7.4) by monitoring the storage (G' , solid symbol) and loss (G'' , open symbol) moduli.

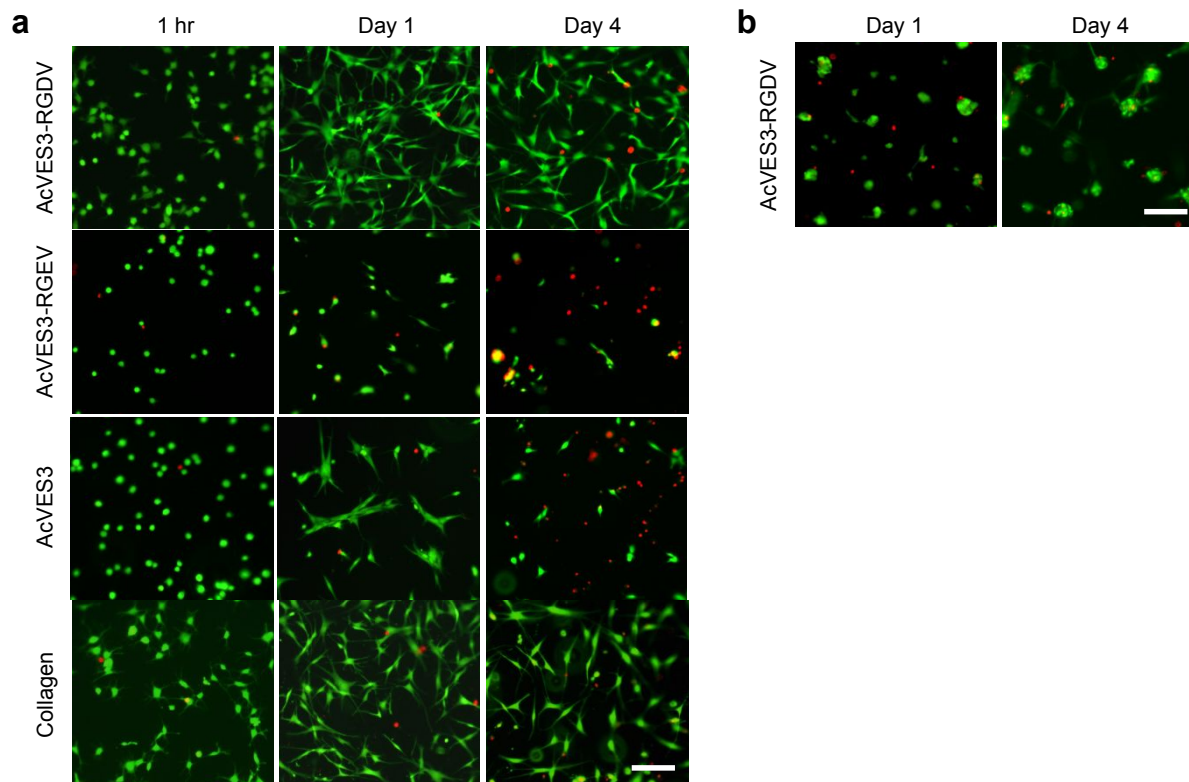


Figure S3. Two-dimensional culture of HDFs on surface of 0.5 wt% peptide gels or 0.3 wt% collagen gels with DMEM (a) or FBS-supplemented DMEM (b). Live cells and dead cells were visualized using calcein AM and ethidium homodimer-1, respectively. Scale bar = 100 μ m.