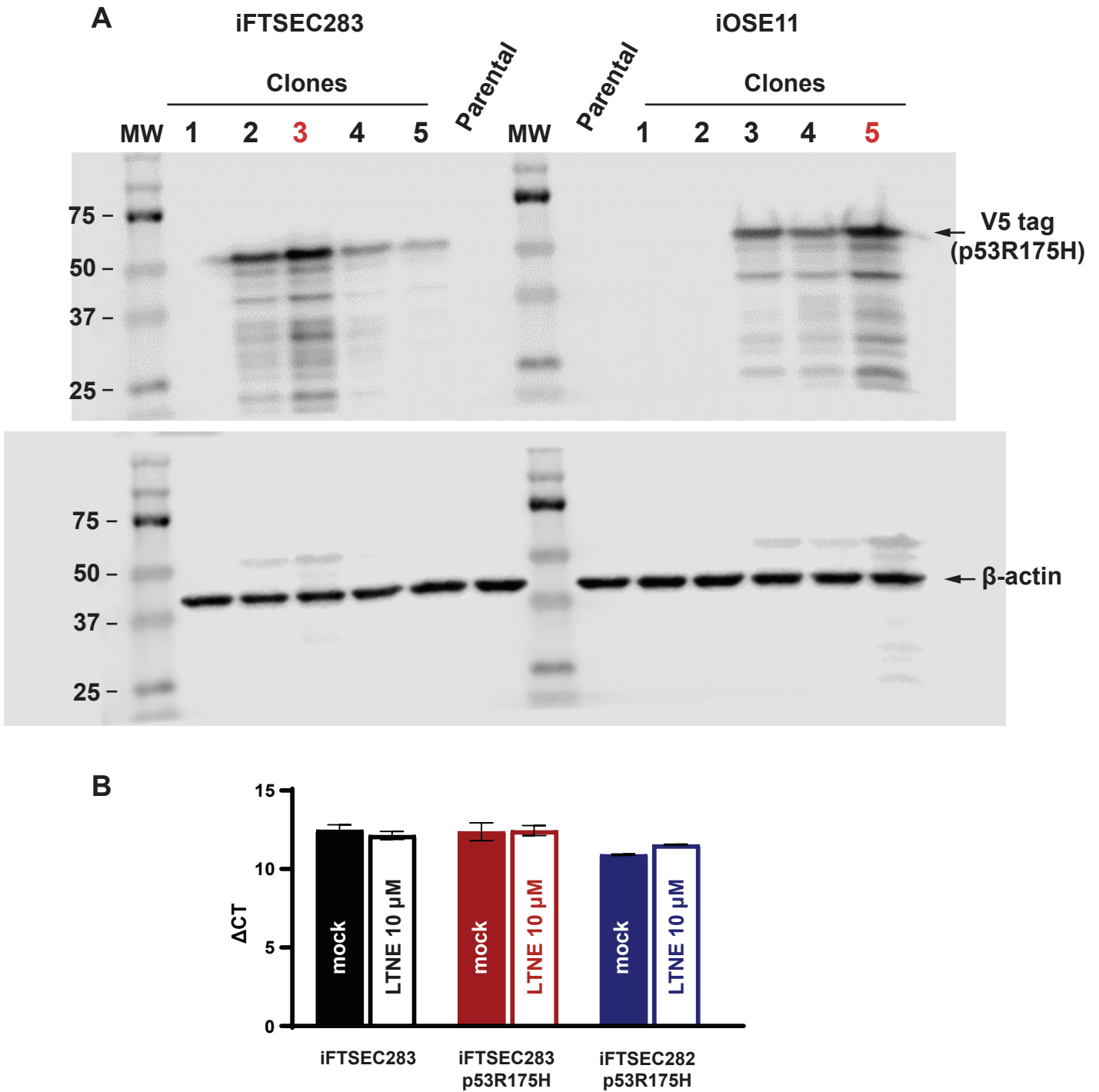
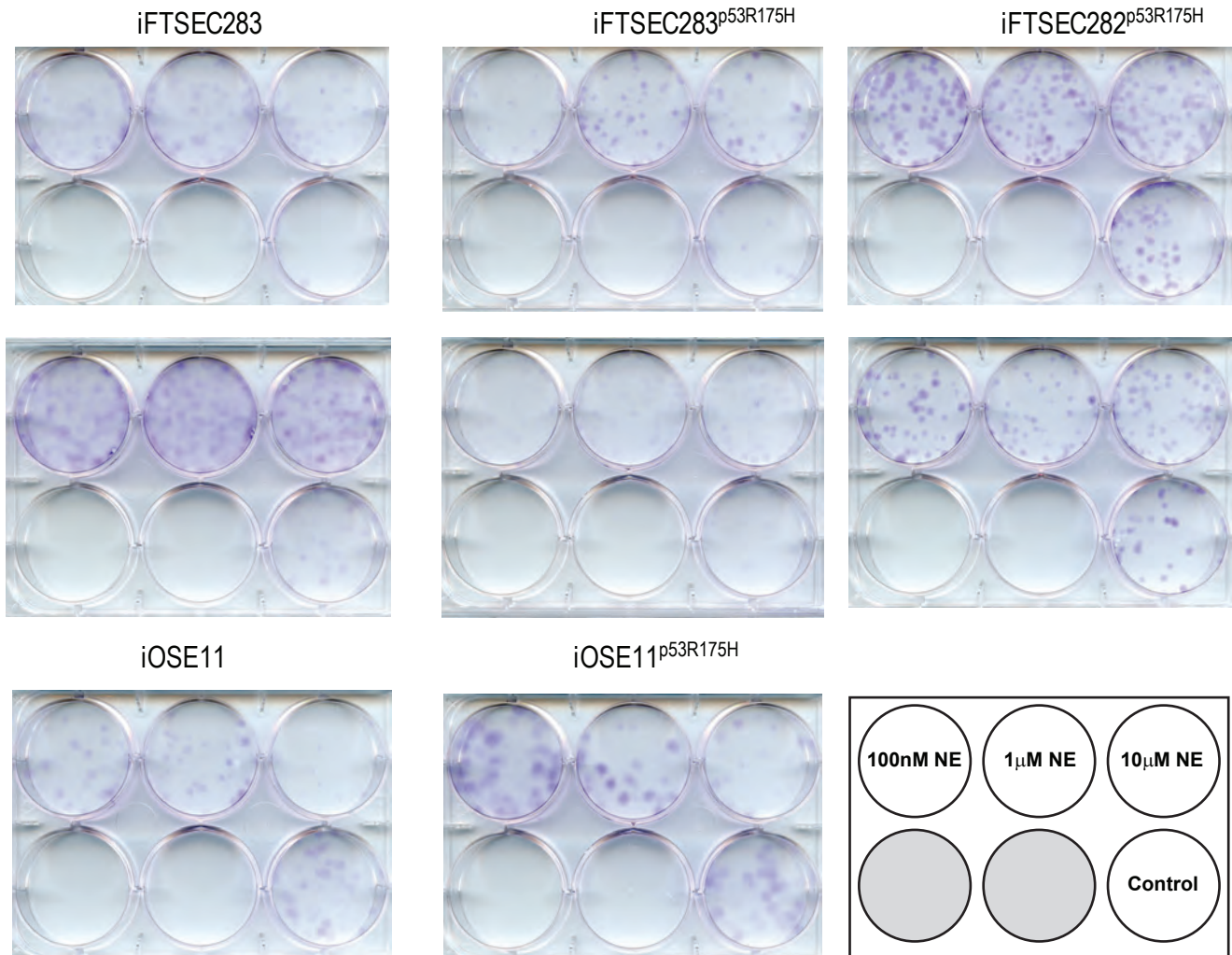


Supp. Figure 1



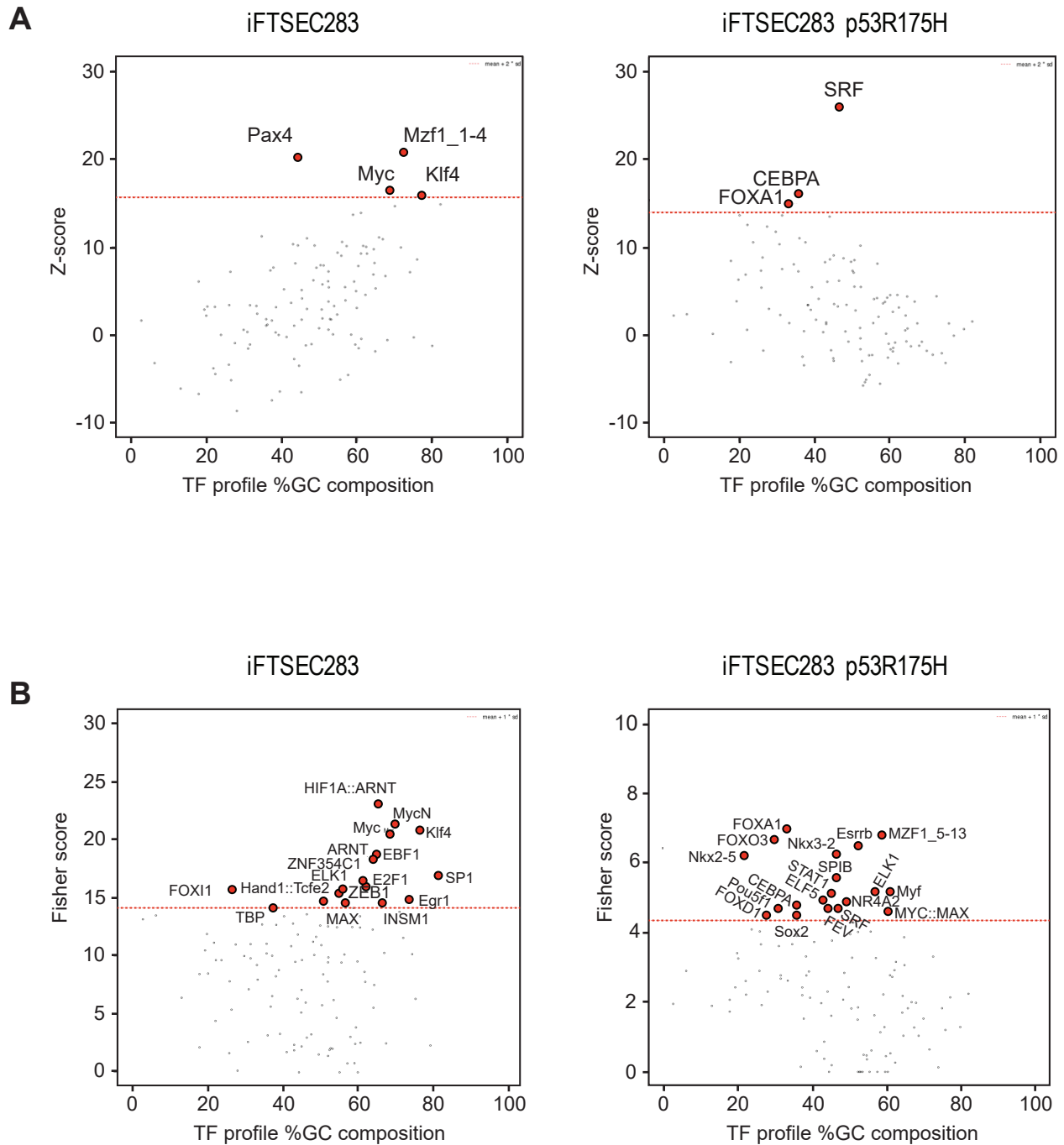
**Supplementary Figure 1. A.** Selection of iFTSEC283 and iOSE11 clones stably expressing V5-tagged p53 (p.R175H). Clones used for subsequent experiments are denoted by red font. **B.** Expression levels for Adrenergic beta-2 receptor gene (*ADRB2*) in mock and long-term norepinephrine exposure treated cells.

Supp. Figure 2



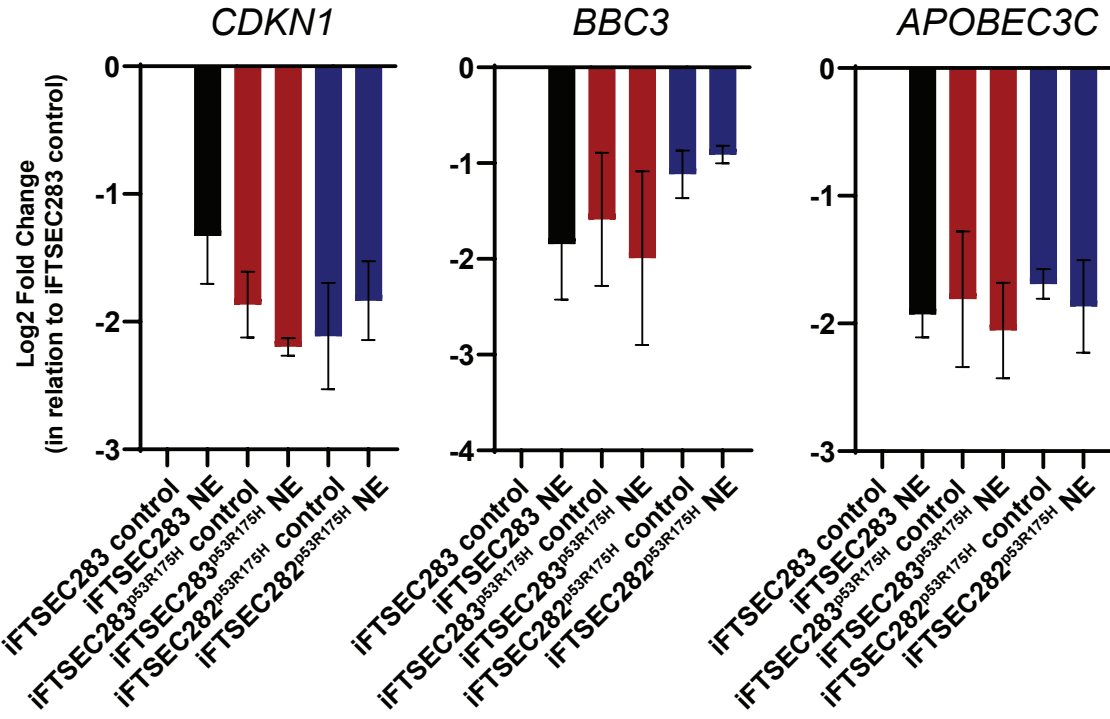
**Supplementary Figure 2.** Colony forming assays. LTNE and mock-treated cells were seeded in 6-well plates at a density of 200 cells per well then treated with 100 nM, 1 μM, and 10 μM NE or vehicle control (H<sub>2</sub>O) every alternate day for 11 days. Each replicate was seeded on a different day over a three-day period. Cells were fixed in methanol and stained with 0.5% crystal violet solution made in 20% methanol.

Supp. Figure 3



**Supplementary Figure 3.** Regulatory Motif Enrichment Analysis. Significantly enriched transcription factors identified using oPOSSUM by **(A)** Z-score and **(B)** Fisher score.

Supp. Figure 4



**Supplementary Figure 4.** Comparative expression of *TP53* target genes *CDKN1*, *BBC3*, and *APOBEC3C*. Gene expression is plotted in reference to the iFTSEC283 control (no NE).