

Supplementary Online Content

Aris IM, Lin PID, Rifas-Shiman SL, et al. Association of early antibiotic exposure with childhood body mass index trajectory milestones. *JAMA Netw Open*. 2021;4(7):e2116581. doi:10.1001/jamanetworkopen.2021.16581

eTable 1. Age and Magnitude of BMI at Peak and Rebound According to Demographic and Clinical Characteristics (n = 183 444)

eTable 2. Associations of Exposure to Antibiotics at Less Than 48 Months With Age and Magnitude of BMI at Peak and Rebound, by Timing of Antibiotic Exposure Periods, After Excluding Data From 5 Network Partners With the Most Atypical Prescribing Rates (n = 180 390)

eTable 3. Associations of Antibiotic Exposure at 0-5 Months With Age and Magnitude of BMI at Peak, by Complex Chronic Condition Status

eTable 4. Associations of Antibiotic Exposure at 0-47 Months With Age at BMI Rebound, by Complex Chronic Condition Status

eTable 5. Associations of Antibiotic Exposure at 0-47 Months With Magnitude of BMI Rebound, by Complex Chronic Condition Status

eFigure 1. Scatterplot of Standardized Residuals

eFigure 2. Associations of Antibiotic Exposure at 0-5 Months With Age and Magnitude of BMI at Peak, After Excluding Data From 5 Network Partners With the Most Atypical Prescribing Rates

eFigure 3. Associations of Antibiotic Exposure at 0-47 Months With Age and Magnitude of BMI at Rebound, After Excluding Data From 5 Network Partners With the Most Atypical Prescribing Rates

This supplementary material has been provided by the authors to give readers additional information about their work.

eTable 1. Age and Magnitude of BMI at Peak and Rebound According to Demographic and Clinical Characteristics (n = 183 444)

		BMI peak		BMI rebound	
		Age (months)	Magnitude (kg/m ²)	Age (months)	Magnitude (kg/m ²)
		Mean (SD)			
Child sex					
	Male	8.3 (2.0)	18.1 (1.5)	54.5 (18.5)	15.8 (1.3)
	Female	8.5 (2.2)	17.6 (1.5)	50.3 (19.1)	15.6 (1.3)
Race/ethnicity					
	White, non-Hispanic	8.5 (2.2)	17.7 (1.5)	54.0 (18.7)	15.6 (1.2)
	Black, non-Hispanic	8.2 (1.9)	18.0 (1.6)	51.7 (18.5)	15.8 (1.3)
	Hispanic	8.4 (2.1)	17.9 (1.6)	49.3 (19.7)	15.9 (1.4)
	Asian, non-Hispanic	8.1 (2.0)	17.5 (1.5)	53.9 (19.5)	15.3 (1.2)
	Other, non-Hispanic	8.4 (2.1)	17.8 (1.6)	52.4 (18.8)	15.7 (1.3)
	Unknown	8.3 (2.0)	17.7 (1.5)	53.3 (19.0)	15.7 (1.3)
Preterm					
	No	8.3 (2.1)	17.8 (1.5)	52.4 (18.9)	15.7 (1.3)
	Yes	8.9 (2.4)	17.4 (1.6)	53.6 (18.8)	15.4 (1.3)
Asthma					
	No	8.4 (2.1)	17.8 (1.5)	52.5 (18.9)	15.7 (1.3)
	Yes	8.4 (2.1)	18.2 (1.6)	52.3 (18.9)	16.0 (1.4)
Complex chronic condition <72 months					
	No	8.2 (2.0)	17.8 (1.5)	52.3 (18.9)	15.7 (1.3)
	Yes	8.9 (2.7)	17.8 (1.6)	53.4 (18.9)	15.6 (1.4)
Systemic corticosteroids episodes 0-47 months					
	0	8.4 (2.1)	17.7 (1.5)	52.3 (19.0)	15.7 (1.3)
	1	8.3 (2.0)	18.0 (1.5)	52.9 (18.7)	15.8 (1.3)
	2	8.3 (2.0)	18.2 (1.6)	53.3 (18.5)	15.9 (1.3)
	3	8.4 (2.2)	18.2 (1.6)	53.0 (18.5)	16.0 (1.4)
	≥4	8.5 (2.3)	18.4 (1.7)	52.1 (18.7)	16.1 (1.4)
Episodes for presumed infectious illnesses 0-47 months					
	0	8.5 (2.2)	17.7 (1.5)	52.1 (18.6)	15.8 (1.3)
	1	8.3 (2.1)	17.7 (1.5)	53.2 (18.5)	15.7 (1.3)
	2	8.3 (2.1)	17.7 (1.5)	52.9 (18.9)	15.6 (1.3)
	3	8.3 (2.0)	17.7 (1.5)	52.9 (18.6)	15.6 (1.3)
	≥4	8.4 (2.1)	17.8 (1.5)	52.4 (19.0)	15.7 (1.3)
Number of clinical encounters 0-47 months					
	0	8.5 (2.3)	17.8 (1.5)	51.4 (18.5)	15.8 (1.3)
	1	8.4 (1.8)	17.9 (1.5)	51.1 (18.8)	15.7 (1.4)
	2	8.3 (1.9)	17.7 (1.6)	51.9 (18.9)	15.6 (1.4)
	3	8.5 (2.3)	17.4 (1.5)	50.8 (18.7)	15.4 (1.3)
	≥4	8.4 (2.1)	17.8 (1.5)	52.5 (18.9)	15.7 (1.3)

eTable 2. Associations of Exposure to Antibiotics at Less Than 48 Months With Age and Magnitude of BMI at Peak and Rebound, by Timing of Antibiotic Exposure Periods, After Excluding Data From 5 Network Partners With the Most Atypical Prescribing Rates (n = 180 390)

	BMI peak		BMI rebound	
	Age (months)	Magnitude (kg/m ²)	Age (months)	Magnitude (kg/m ²)
	β (95% CI)^a			
<i>Any, mo</i>				
0–5 ^b	0.04 (0.02, 0.07)	0.09 (0.07, 0.11)	0.28 (0.03, 0.59)	0.02 (0.00, 0.03)
6–11 ^{b,c}	– ^d	–	0.00 (-0.20, 0.20)	0.03 (0.02, 0.04)
12–23 ^{b,c}	–	–	-0.34 (-0.54, -0.19)	0.03 (0.02, 0.04)
24–35 ^{b,c}	–	–	-0.62 (-0.82, -0.42)	0.01 (0.00, 0.02)
36–47 ^{b,c}	–	–	-0.54 (-0.75, -0.33)	0.01 (0.00, 0.02)
0–47 ^b	–	–	-0.59 (-0.80, -0.37)	0.02 (0.01, 0.03)
<i>Broad-spectrum, mo</i>				
0–5 ^b	0.06 (0.02, 0.10)	0.10 (0.07, 0.12)	0.12 (-0.25, 0.49)	0.02 (-0.01, 0.03)
6–11 ^{b,c}	–	–	0.23 (-0.01, 0.47)	0.03 (0.01, 0.04)
12–23 ^{b,c}	–	–	-0.26 (-0.47, -0.05)	0.03 (0.02, 0.04)
24–35 ^{b,c}	–	–	-0.60 (-0.83, -0.37)	0.02 (0.01, 0.03)
36–47 ^{b,c}	–	–	-0.65 (-0.89, -0.41)	0.02 (0.01, 0.03)
0–47 ^b	–	–	-0.46 (-0.64, -0.28)	0.03 (0.02, 0.04)
<i>Narrow-spectrum, mo</i>				
0–5 ^b	0.03 (0.00, 0.06)	0.08 (0.06, 0.10)	0.29 (0.00, 0.58)	0.02 (0.00, 0.03)
6–11 ^{b,c}	–	–	-0.05 (-0.26, 0.15)	0.03 (0.02, 0.04)
12–23 ^{b,c}	–	–	-0.34 (-0.53, -0.15)	0.02 (0.01, 0.03)
24–35 ^{b,c}	–	–	-0.64 (-0.85, -0.43)	0.01 (0.00, 0.02)
36–47 ^{b,c}	–	–	-0.50 (-0.72, -0.28)	0.01 (0.00, 0.02)
0–47 ^b	–	–	-0.64 (-0.83, -0.45)	0.03 (0.02, 0.04)

^a All associations were adjusted for child sex, race/ethnicity, preterm birth, asthma, infections, complex chronic conditions, corticosteroid episodes and clinical encounters.

^b Covariates contemporaneous with the exposure periods (corticosteroids, infections and clinical encounters) were adjusted for age-specific antibiotic exposures.

^c Additionally adjusted for previous antibiotics exposure periods.

^d Associations with age and magnitude of BMI at peak were only assessed for antibiotic exposure at 0–5 months.

eTable 3. Associations of Antibiotic Exposure at 0-5 Months With Age and Magnitude of BMI at Peak, by Complex Chronic Condition Status

	Without complex chronic conditions (n=160,984)			With complex chronic conditions (n=22,460)		
	Any antibiotic	Broad-spectrum	Narrow-spectrum	Any antibiotic	Broad-spectrum	Narrow-spectrum
	β (95% CI) ^a			β (95% CI) ^a		
<i>Age of BMI at peak</i>						
No exposure	ref	ref	ref	ref	ref	ref
1 episode	0.04	0.02	0.06	-0.02	0.11	-0.22
	(0.01,0.07)	(-0.02,0.07)	(0.02,0.09)	(-0.13,0.08)	(-0.02,0.23)	(-0.35,-0.10)
2 episodes	0.1	0.14	0.15	-0.01	0.05	-0.30
	(0.04,0.17)	(0.01,0.26)	(0.05,0.25)	(-0.18,0.16)	(-0.18,0.27)	(-0.57,-0.03)
3 episodes	0.21	0.08	-0.15	0.14	0.64	0.30
	(0.06,0.35)	(-0.20,0.36)	(-0.51,0.22)	(-0.13,0.41)	(0.27,1.01)	(-0.22,0.82)
≥4 episodes	0.04	0.15	-0.3	0.26	0.5	0.43
	(-0.22,0.31)	(-0.45,0.76)	(-1.40,0.81)	(-0.10,0.61)	(-0.04,1.04)	(-0.27,1.14)
<i>Magnitude of BMI at peak</i>						
No exposure	ref	ref	ref	ref	ref	ref
1 episode	0.05	0.08	0.04	0.15	0.1	0.17
	(0.03,0.08)	(0.04,0.11)	(0.02,0.07)	(0.09,0.21)	(0.03,0.18)	(0.10,0.24)
2 episodes	0.06	0.03	0.09	0.13	0.17	0.20
	(0.01,0.11)	(-0.07,0.12)	(0.02,0.17)	(0.03,0.23)	(0.04,0.30)	(0.05,0.36)
3 episodes	0.11	0.28	0.12	0.14	-0.09	0.29
	(0.01,0.22)	(0.07,0.49)	(-0.15,0.39)	(-0.02,0.29)	(-0.31,0.12)	(-0.01,0.59)
≥4 episodes	0.24	-0.15	0.09	0.25	0.14	0.38
	(0.05,0.44)	(-0.60,0.30)	(-0.73,0.91)	(0.04,0.45)	(-0.17,0.46)	(-0.02,0.79)

^a Adjusted for child sex, race/ethnicity, preterm birth, asthma, infections, corticosteroid episodes and clinical encounters at 0–5 months of age.

eTable 4. Associations of Antibiotic Exposure at 0–47 Months With Age at BMI Rebound, by Complex Chronic Condition Status

	Without complex chronic conditions (n=160,984) ^a						With complex chronic conditions (n=22,460) ^a					
	0–5 mo ^b	6–11 mo ^{b,c}	12–23 mo ^{b,c}	24–35 mo ^{b,c}	36–47 mo ^{b,c}	0–47 mo ^b	0–5 mo ^b	6–11 mo ^{b,c}	12–23 mo ^{b,c}	24–35 mo ^{b,c}	36–47 mo ^{b,c}	0–47 mo ^b
<u>Any</u>												
No exposure	ref	ref	ref	ref	ref	ref	ref	ref	ref	ref	ref	ref
1 episode	0.23 (-0.08,0.53)	-0.19 (-0.44,0.06)	-0.31 (-0.56,-0.07)	-0.34 (-0.59,-0.10)	-0.22 (-0.47,0.03)	-0.13 (-0.42,0.16)	1.04 (0.31,1.76)	0.08 (-0.59,0.75)	-0.45 (-1.12,0.22)	-0.28 (-0.96,0.40)	-0.25 (-0.94,0.44)	-0.31 (-1.11,0.48)
2 episodes	0.17 (-0.47,0.81)	0.15 (-0.22,0.52)	-0.5 (-0.82,-0.17)	-0.56 (-0.93,-0.20)	-0.38 (-0.77,0.00)	-0.27 (-0.59,0.05)	0.59 (-0.59,1.76)	0.51 (-0.44,1.47)	1.22 (0.35,2.09)	0.12 (-0.83,1.06)	0.00 (-1.01,1.00)	-0.60 (-1.48,0.27)
3 episodes	0.06 (-1.31,1.43)	0.6 (0.06,1.13)	-0.1 (-0.52,0.33)	-1.05 (-1.57,-0.53)	-0.57 (-1.15,0.01)	-0.52 (-0.88,-0.17)	0.28 (-1.55,2.12)	-0.01 (-1.39,1.37)	0.34 (-0.79,1.47)	-0.29 (-1.60,1.02)	1.46 (0.03,2.89)	-1.21 (-2.18,-0.23)
≥4 episodes	1.77 (-0.72,4.26)	0.38 (-0.25,1.01)	-0.59 (-1.02,-0.16)	-1.69 (-2.29,-1.09)	-1.5 (-2.20,-0.79)	-0.81 (-1.09,-0.52)	1.69 (-0.73,4.11)	1.56 (-0.04,3.16)	0.49 (-0.59,1.57)	-0.83 (-2.14,0.49)	-0.75 (-2.20,0.70)	0.07 (-0.65,0.79)
<u>Broad-spectrum</u>												
No exposure	ref	ref	ref	ref	ref	ref	ref	ref	ref	ref	ref	ref
1 episode	0.09 (-0.35,0.54)	0.09 (-0.22,0.40)	-0.34 (-0.61,-0.07)	-0.29 (-0.57,-0.01)	-0.40 (-0.69,-0.10)	-0.29 (-0.54,-0.05)	0.15 (-0.72,1.02)	-0.2 (-0.97,0.57)	-0.02 (-0.73,0.70)	-1.13 (-1.88,-0.37)	-0.16 (-0.94,0.62)	0.03 (-0.66,0.72)
2 episodes	0.26 (-0.92,1.44)	0.45 (-0.07,0.97)	0 (-0.41,0.41)	-0.16 (-0.63,0.32)	-0.32 (-0.86,0.21)	-0.24 (-0.56,0.07)	0.88 (-0.67,2.43)	0.70 (-0.51,1.90)	1.03 (0.01,2.04)	0.46 (-0.71,1.63)	-0.22 (-1.49,1.05)	-0.32 (-1.17,0.53)
3 episodes	1.34 (-1.33,4.01)	0.91 (0.15,1.68)	-0.13 (-0.69,0.43)	-0.91 (-1.66,-0.16)	-0.29 (-1.16,0.58)	-0.58 (-0.99,-0.18)	-0.79 (-3.32,1.73)	1.08 (-0.73,2.90)	-0.70 (-2.12,0.72)	-1.13 (-2.82,0.56)	-0.19 (-2.04,1.66)	-0.16 (-1.20,0.89)
≥4 episodes	4.22 (-1.53,9.96)	0.39 (-0.54,1.31)	-0.02 (-0.58,0.54)	-1.45 (-2.32,-0.59)	-0.90 (-1.96,0.17)	-0.38 (-0.69,-0.08)	2.53 (-1.18,6.23)	2.28 (0.06,4.49)	0.35 (-0.99,1.69)	-2.14 (-3.79,-0.48)	-0.18 (-2.08,1.72)	-0.30 (-1.03,0.44)
<u>Narrow-spectrum</u>												
No exposure	ref	ref	ref	ref	ref	ref	ref	ref	ref	ref	ref	ref
1 episode	0.31 (-0.01,0.64)	-0.17 (-0.41,0.08)	-0.31 (-0.54,-0.08)	-0.42 (-0.67,-0.18)	-0.24 (-0.49,0.02)	-0.27 (-0.52,-0.02)	0.59 (-0.25,1.43)	0.17 (-0.52,0.87)	0.14 (-0.51,0.79)	0.26 (-0.44,0.97)	-0.29 (-1.02,0.44)	-0.39 (-1.06,0.27)
2 episodes	-0.12 (-1.07,0.83)	0.2 (-0.24,0.64)	-0.62 (-0.98,-0.27)	-1.01 (-1.45,-0.58)	-0.50 (-0.98,-0.03)	-0.40 (-0.69,-0.11)	0.13 (-1.70,1.95)	0.27 (-1.00,1.54)	0.85 (-0.17,1.87)	-0.25 (-1.44,0.93)	0.10 (-1.20,1.40)	-1.48 (-2.28,-0.68)
3 episodes	1.99 (-1.44,5.43)	-0.19 (-1.22,0.84)	-0.39 (-1.00,0.21)	-1.05 (-1.91,-0.19)	-1.00 (-1.94,-0.07)	-0.75 (-1.09,-0.41)	3.46 (-0.09,7.02)	0.01 (-2.79,2.80)	1.91 (0.26,3.56)	1.85 (-0.38,4.08)	0.61 (-1.64,2.86)	-1.28 (-2.24,-0.31)
≥4 episodes	-1.29 (-11.77,9.19)	2.5 (-0.44,5.43)	-0.87 (-1.91,0.17)	-1.85 (-3.46,-0.24)	-2.32 (-4.15,-0.49)	-1.13 (-1.44,-0.82)	0.84 (-3.98,5.65)	1.11 (-4.09,6.30)	-1.24 (-3.77,1.29)	-0.48 (-3.61,2.64)	1.51 (-1.95,4.97)	0.52 (-0.27,1.31)

^a All associations were adjusted for child sex, race/ethnicity, preterm birth, asthma, infections, corticosteroid episodes and clinical encounters.

^b Covariates contemporaneous with the exposure periods (corticosteroids, infections and clinical encounters) were adjusted for age-specific antibiotic exposures.

^c Additionally adjusted for previous antibiotics exposure periods.

eTable 5. Associations of Antibiotic Exposure at 0–47 Months With Magnitude of BMI Rebound, by Complex Chronic Condition Status

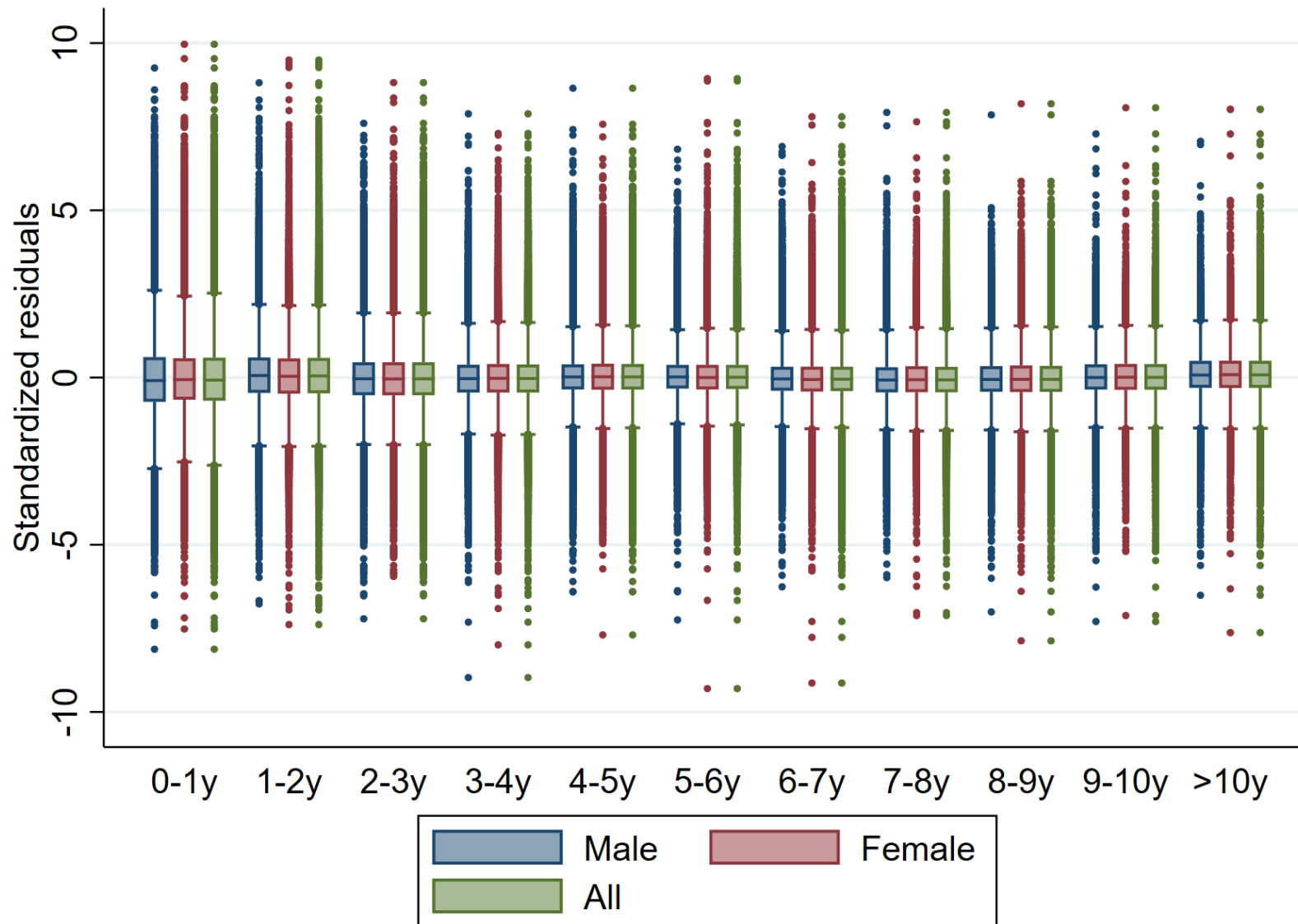
	Without complex chronic conditions (n=160,984) ^a						With complex chronic conditions (n=22,460) ^a					
	0–5 mo ^b	6–11 mo ^{b,c}	12–23 mo ^b	24–35 mo ^{b,c}	36–47 mo ^b	0–47 mo ^{b,c}	0–5 mo ^b	6–11 mo ^{b,c}	12–23 mo ^b	24–35 mo ^{b,c}	36–47 mo ^b	0–47 mo ^{b,c}
<u>Any</u>												
No exposure	ref	ref	ref	ref	ref	ref	ref	ref	Ref	ref	ref	ref
1 episode	0.02 (0.00,0.03)	0.03 (0.02,0.04)	0.03 (0.02,0.04)	0.01 (-0.00,0.02)	0.01 (-0.01,0.02)	-0.01 (-0.02,0.01)	-0.03 (-0.06,0.01)	0.01 (-0.02,0.04)	-0.02 (-0.09,0.05)	0.00 (-0.04,0.03)	0.03 (-0.01,0.06)	-0.01 (-0.05,0.03)
2 episodes	0.02 (-0.01,0.05)	0.03 (0.02,0.05)	0.04 (0.02,0.05)	0.02 (0.00,0.04)	0.02 (-0.00,0.04)	0.01 (-0.01,0.03)	0 (-0.06,0.06)	0.01 (-0.03,0.06)	0 (-0.08,0.09)	0.00 (-0.05,0.04)	0.02 (-0.03,0.07)	0.02 (-0.03,0.06)
3 episodes	0.03 (-0.03,0.10)	0.03 (0.01,0.06)	0.04 (0.02,0.06)	0.03 (0.00,0.05)	0.02 (-0.01,0.04)	0.03 (0.02,0.05)	-0.02 (-0.11,0.08)	0.04 (-0.03,0.11)	-0.01 (-0.12,0.10)	0.05 (-0.01,0.12)	-0.09 (-0.16,-0.02)	0.05 (-0.00,0.10)
≥4 episodes	-0.1 (-0.22,0.02)	0.06 (0.03,0.09)	0.06 (0.04,0.08)	0.02 (-0.01,0.05)	0.04 (0.01,0.07)	0.05 (0.04,0.07)	-0.19 (-0.31,-0.07)	-0.03 (-0.11,0.05)	-0.02 (-0.14,0.09)	-0.01 (-0.08,0.06)	0.00 (-0.07,0.07)	0.00 (-0.04,0.03)
<u>Broad-spectrum</u>												
No exposure	ref	ref	ref	ref	ref	ref	ref	ref	ref	ref	ref	ref
1 episode	0.02 (-0.00,0.04)	0.02 (0.01,0.04)	0.02 (0.01,0.04)	0.02 (0.01,0.03)	0.03 (0.02,0.04)	0.02 (0.01,0.03)	0.03 (-0.01,0.08)	0.01 (-0.03,0.05)	0.01 (-0.02,0.05)	0.03 (-0.00,0.07)	0.01 (-0.03,0.05)	-0.01 (-0.04,0.03)
2 episodes	-0.01 (-0.07,0.04)	0.04 (0.01,0.06)	0.04 (0.02,0.06)	0.00 (-0.03,0.02)	0.00 (-0.02,0.03)	0.03 (0.02,0.05)	-0.02 (-0.10,0.06)	0.01 (-0.05,0.07)	-0.01 (-0.06,0.04)	0.02 (-0.04,0.08)	0.02 (-0.04,0.09)	0.02 (-0.02,0.06)
3 episodes	-0.06 (-0.19,0.07)	0.01 (-0.02,0.05)	0.02 (-0.00,0.05)	0.05 (0.01,0.08)	0.03 (-0.01,0.07)	0.04 (0.02,0.06)	-0.02 (-0.15,0.11)	-0.07 (-0.16,0.02)	0.06 (-0.02,0.13)	0.07 (-0.01,0.16)	-0.08 (-0.17,0.02)	0.01 (-0.04,0.06)
≥4 episodes	-0.14 (-0.42,0.13)	0.05 (0.00,0.09)	0.05 (0.03,0.08)	0.03 (-0.01,0.07)	0.03 (-0.02,0.08)	0.06 (0.04,0.07)	-0.15 (-0.34,0.04)	-0.08 (-0.19,0.04)	0.05 (-0.02,0.12)	0.01 (-0.08,0.09)	-0.04 (-0.13,0.06)	0.01 (-0.03,0.05)
<u>Narrow-spectrum</u>												
No exposure	ref	ref	ref	ref	ref	ref	ref	ref	ref	ref	ref	ref
1 episode	0.02 (0.01,0.04)	0.03 (0.02,0.04)	0.03 (0.02,0.04)	0.01 (-0.01,0.02)	0.01 (-0.01,0.02)	0.01 (-0.00,0.02)	-0.02 (-0.07,0.02)	0.02 (-0.02,0.05)	0.01 (-0.02,0.04)	0.00 (-0.04,0.03)	0.01 (-0.03,0.05)	0.04 (0.00,0.07)
2 episodes	0.03 (-0.02,0.08)	0.02 (-0.00,0.04)	0.03 (0.01,0.05)	0.01 (-0.01,0.03)	0.00 (-0.02,0.02)	0.03 (0.01,0.04)	-0.02 (-0.11,0.08)	0.04 (-0.03,0.10)	-0.01 (-0.06,0.04)	0.00 (-0.06,0.06)	0.03 (-0.04,0.09)	0.07 (0.02,0.11)
3 episodes	-0.1 (-0.26,0.07)	0.06 (0.01,0.11)	0.03 (0.00,0.06)	0.02 (-0.02,0.06)	0.01 (-0.03,0.06)	0.05 (0.03,0.06)	-0.16 (-0.34,0.02)	0.04 (-0.10,0.19)	-0.08 (-0.17,0.00)	-0.06 (-0.17,0.05)	-0.04 (-0.16,0.07)	0.06 (0.01,0.11)
≥4 episodes	-0.24 (-0.74,0.26)	-0.01 (-0.15,0.13)	0.04 (-0.01,0.09)	0.01 (-0.07,0.09)	0.05 (-0.04,0.14)	0.05 (0.04,0.07)	-0.3 (-0.55,-0.06)	-0.04 (-0.30,0.23)	0.07 (-0.06,0.19)	-0.12 (-0.28,0.04)	0.01 (-0.16,0.19)	-0.01 (-0.05,0.03)

^a All associations were adjusted for child sex, race/ethnicity, preterm birth, asthma, infections, corticosteroid episodes and clinical encounters at 0–47 months of age.

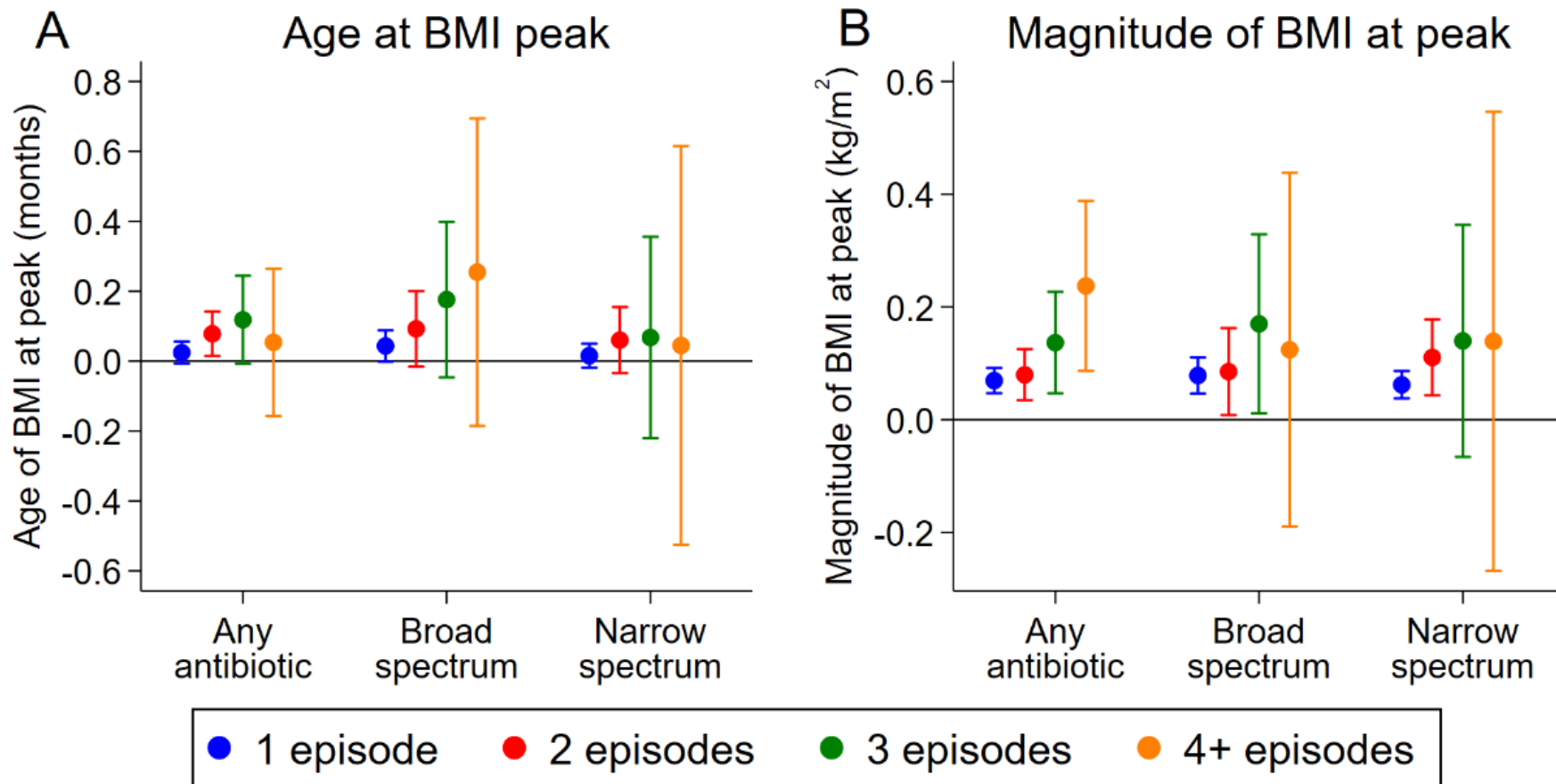
^b Covariates contemporaneous with the exposure periods (corticosteroids, infections and clinical encounters) were adjusted for age-specific antibiotic exposures.

^c Additionally adjusted for previous antibiotics exposure periods.

eFigure 1. Scatterplot of Standardized Residuals



eFigure 2. Associations of Antibiotic Exposure at 0-5 Months With Age and Magnitude of BMI at Peak, After Excluding Data From 5 Network Partners With the Most Atypical Prescribing Rates



eFigure 3. Associations of Antibiotic Exposure at 0-47 Months With Age and Magnitude of BMI at Rebound, After Excluding Data From 5 Network Partners With the Most Atypical Prescribing Rates

