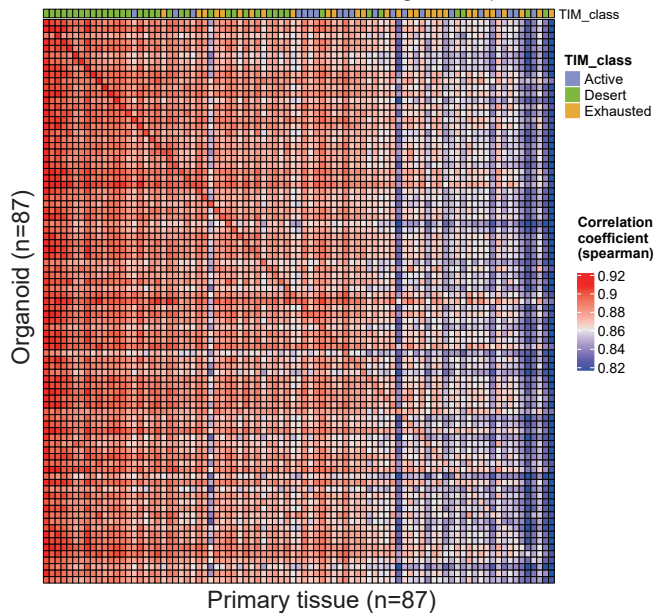


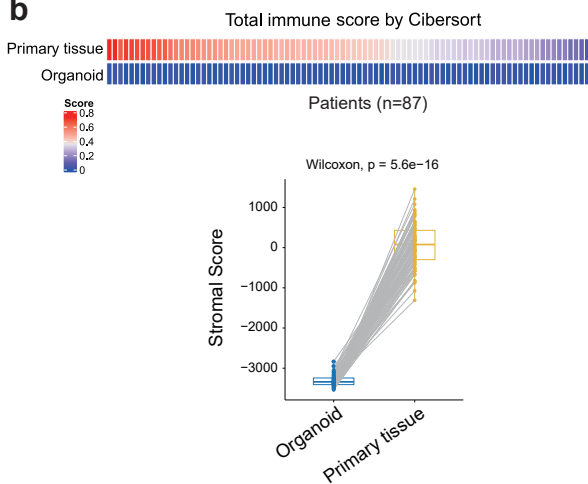
Fig. S4

a

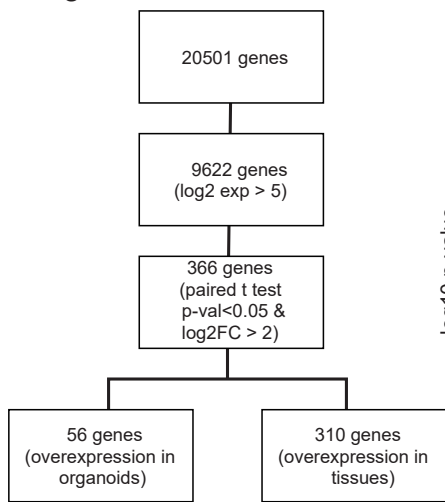
Correlation matrix based on the whole genes expression



b

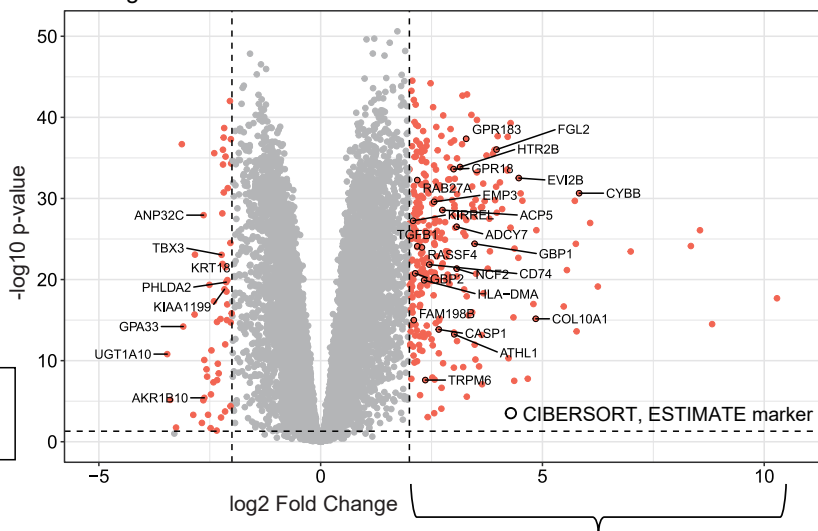


c



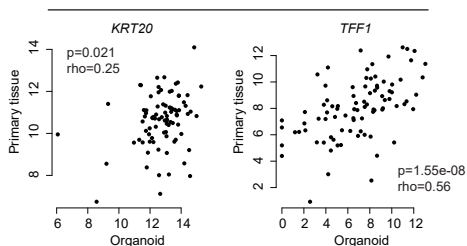
Upregulated in organoids

Upregulated in primary tumor tissues

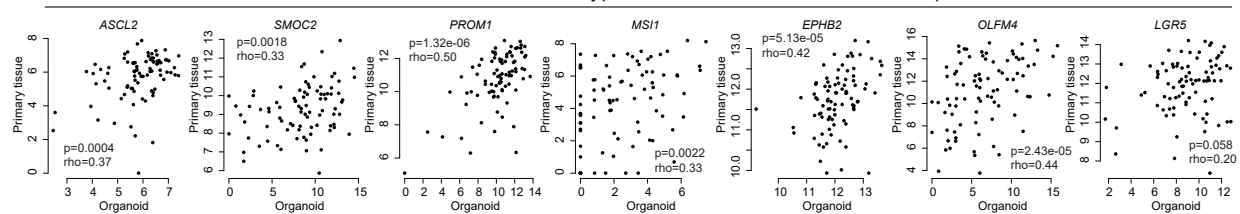


d

Differentiation markers



Stem cell markers for crypt base columnar cell of intestinal epithelium



Category	Term	Genes	Count	%	P-value	FDR
GOTERM_CC_DIRECT	extracellular matrix	29	10.6	3.3E-17	8.4E-15	
LP_KEYWORDS	Extracellular matrix	24	8.8	5.7E-14	1.6E-11	
GOTERM_BP_DIRECT	extracellular matrix organization	20	7.3	4.9E-12	7.2E-9	
GOTERM_CC_DIRECT	proteinaceous extracellular matrix	22	8.1	1.5E-11	1.9E-9	
GOTERM_CC_DIRECT	extracellular space	40	14.7	3.5E-7	2.9E-5	
LP_KEYWORDS	Immunity	17	6.2	3.2E-4	7.5E-3	