

## Supporting Information

# Autonomous Lab-on-Paper for Multiplexed, CRISPR-based Diagnostics of SARS-CoV-2

Kun Yin<sup>1</sup>, Xiong Ding<sup>1</sup>, Ziyue Li<sup>1</sup>, Maroun M. Sfeir<sup>2</sup>, Enrique Ballesteros<sup>2</sup>, and Changchun Liu<sup>1\*</sup>

<sup>1</sup>Department of Biomedical Engineering, University of Connecticut Health Center, 263 Farmington Ave., Farmington, CT 06030, United States

<sup>2</sup>Department of Pathology and Laboratory Medicine, University of Connecticut Health Center, Farmington, CT 06030, United States

### \* Corresponding author

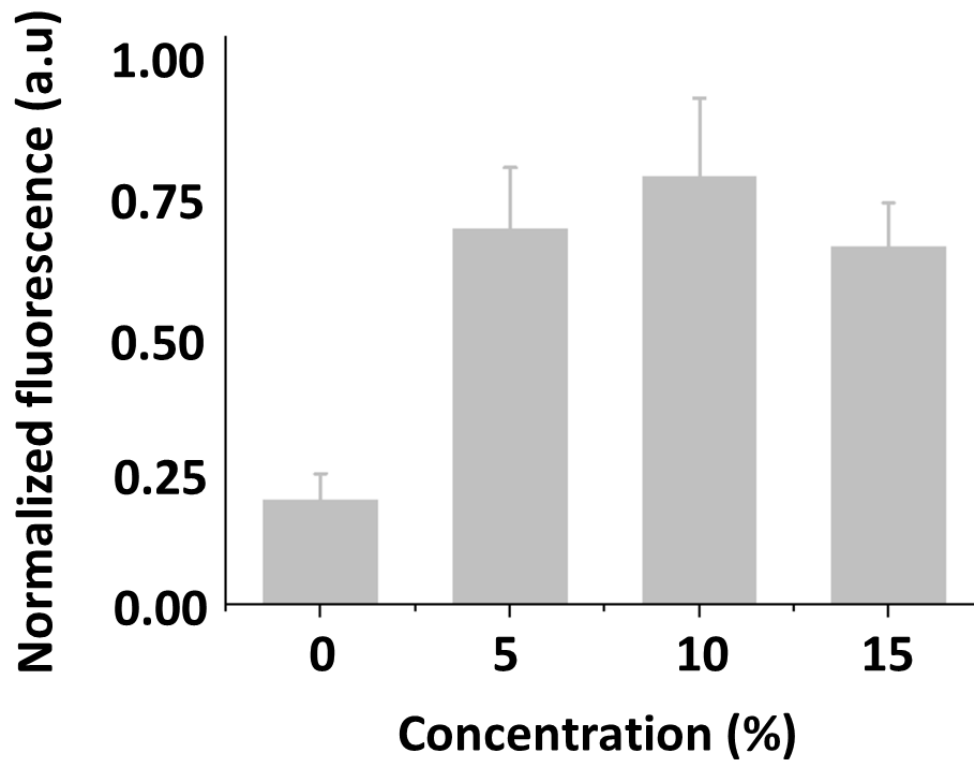
Dr. Changchun Liu  
Department of Biomedical Engineering  
University of Connecticut Health Center  
263 Farmington Avenue  
Farmington, CT 06030  
Phone: (860)-679-2565  
E-mail: [chaliu@uchc.edu](mailto:chaliu@uchc.edu)

**Table S1** RPA primers and Cas12a guide RNAs for N/S gene of SARS-CoV-2 and Human RNase P gene

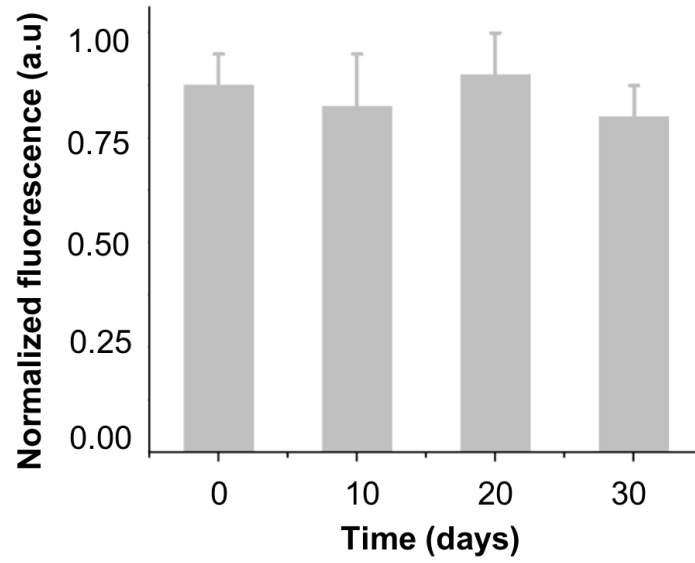
Target	RPA primers / Cas12a guide RNA	Sequence (5'-3')
N gene	RPA forward primer	AGGCAGCAGTAGGGGAACTTCTCCTGCTAGAAT
	RPA reverse primer	TTGGCCTTTACCAGACATTTTGCTCTCAAGCTG
	Cas12a guide RNA	UAAUUUCUACUAAGUGUGAUGCUGCUUGACAGAUU GAAC
S gene	RPA forward primer	AGGTTTCAAACCTTTACTTGCTTTACATAGA
	RPA reverse primer	TCCTAGGTTGAAGATAACCCACATAATAAG
	Cas12a guide RNA	UAAUUUCUACUAAGUGUGAUGCAGCACCAGCUGUCCAA CCUGAAGAAG
Human RNase P gene	RPA forward primer	CGCAACAACCTCAGCCATCCACATCCGAGTC
	RPA reverse primer	TATCACGGAGGGGATAAGTGGAGGAGTGTC
	Cas12a guide RNA	UAAUUUCUACUAAGUGUGAUAUUACUUGGGUGUGACC CU

**Table S2** Ct values of real-time RT-PCR for N gene detection of SARS-CoV-2 in clinical samples.

<b>Samples</b>	<b>Ct values</b>	<b>Samples</b>	<b>Ct values</b>
1	Not Detected	12	19
2	29	13	Not Detected
3	Not Detected	14	Not Detected
4	Not Detected	15	16
5	23	16	Not Detected
6	Not Detected	17	Not Detected
7	Not Detected	18	20
8	Not Detected	19	Not Detected
9	21	20	18
10	Not Detected	21	27
11	Not Detected		



**Figure. S1** Optimization of the trehalose's concentration for dry storage of CRISPR reagents. Error bars denote s.d. (n=3).



**Figure. S2** Stability of pre-stored CRISPR/Cas12a reagents on the paper-based detection chambers. Error bars denote s.d. (n=3).