

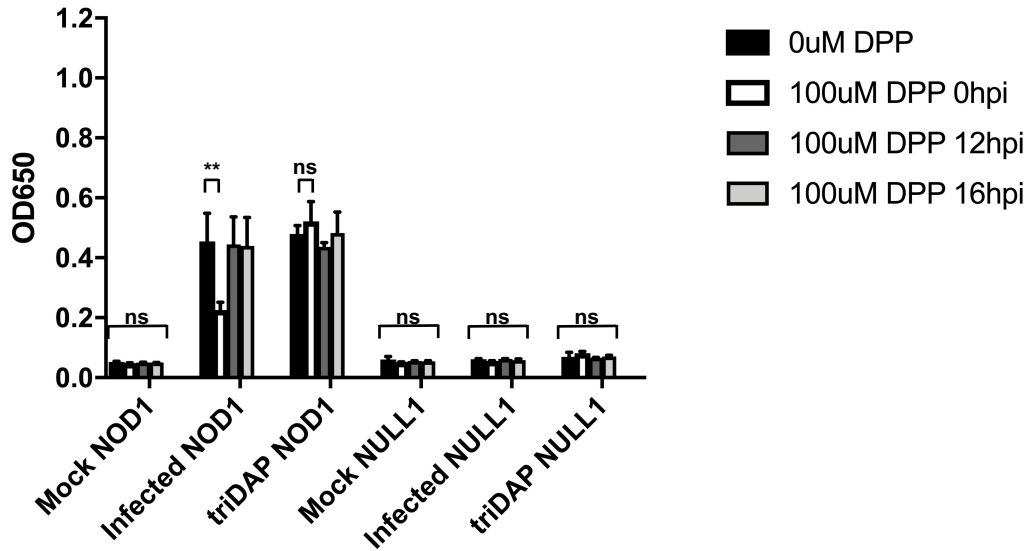
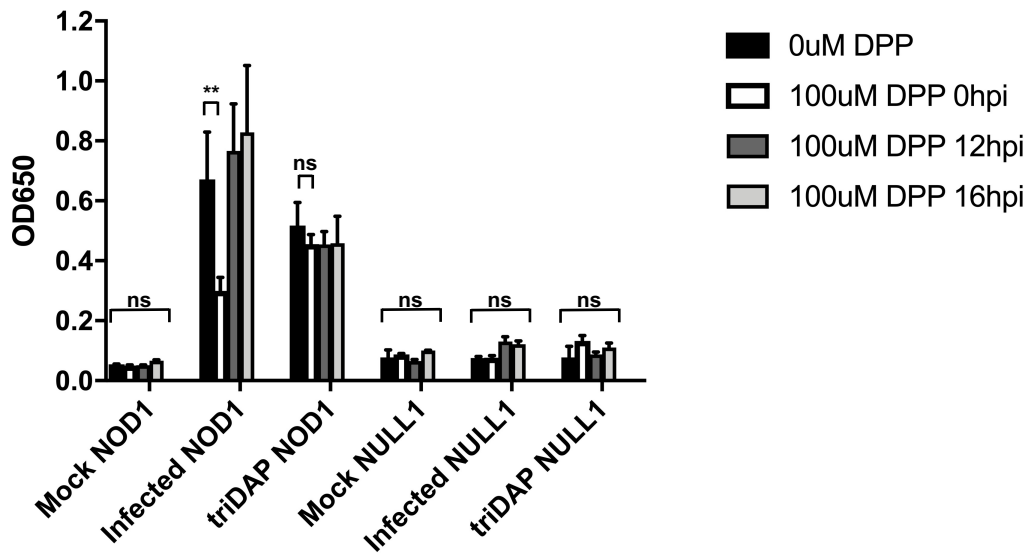
a**b**

Figure S2. The presence of immunostimulatory peptidoglycan is dependent on the timing of persistence induction. HEK hNOD1 SEAP-reporter assay comparing the abundance of shed, immunostimulatory peptidoglycan when iron sequestration is initiated at different time points throughout the *Chlamydia* developmental cycle. NOD activity was tested from cell supernatants at 24 hpi (**a**) and 36 hpi (**b**). OD₆₅₀ of the treatment group was normalized to the untreated and represented as percent SEAP activity. Data presented are the mean of three biological replicates and error bars represent standard deviation from the mean. **, p < 0.05; ns, not significant.