

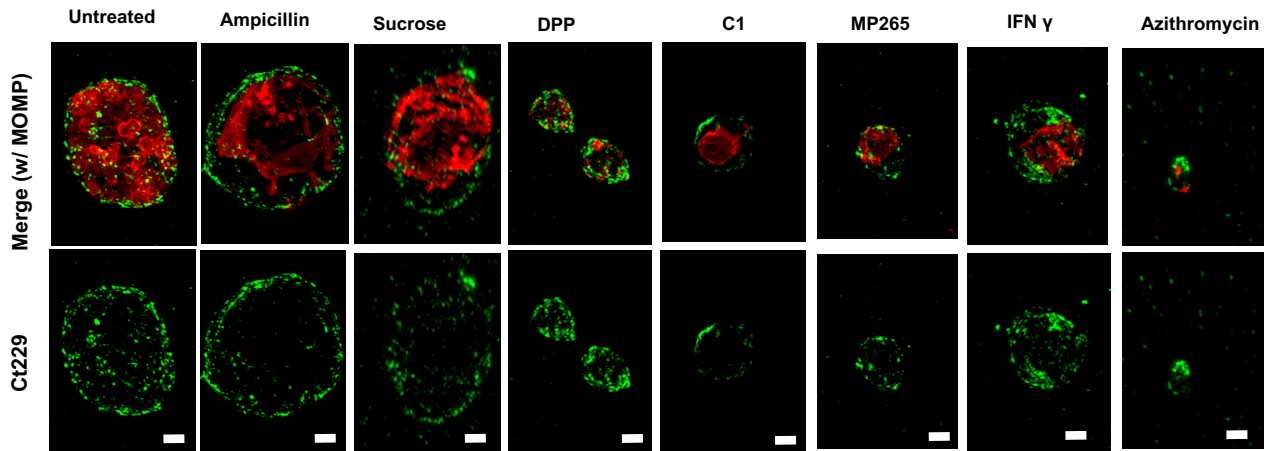
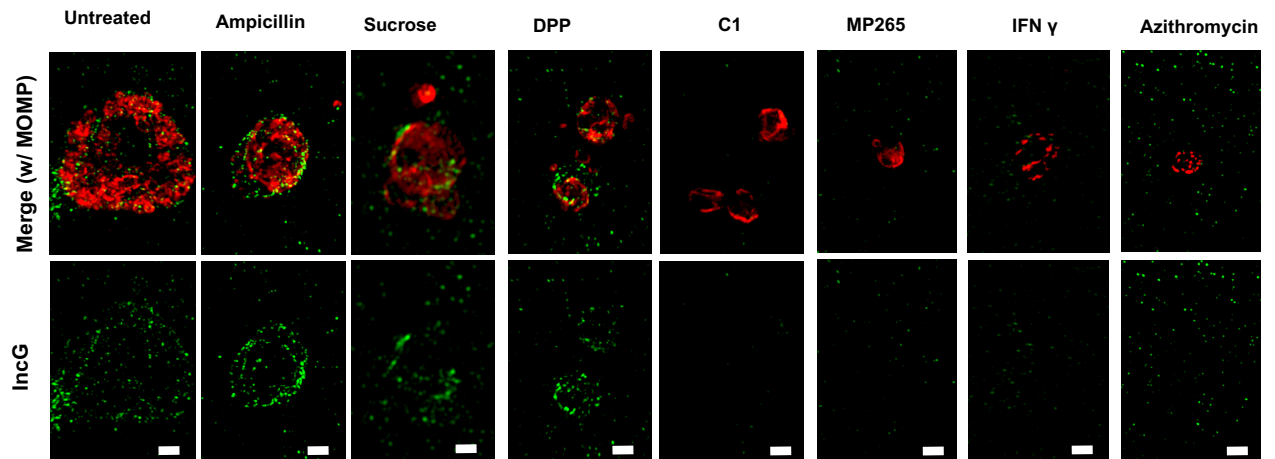
a**b**

Figure S3: *Chlamydia* ABs differ in their presentation of early-stage inclusion membrane proteins. Immunolabeling of inclusion membrane proteins CT229 (a) and IncG (b) in *Chlamydia*-infected cells at 24 hours post infection. Inc presentation was compared for six different aberrance-inducing conditions. Cells treated with the protein synthesis inhibitor azithromycin at 8 hpi were used as a control. Scale bars; ~ 2 μ m.