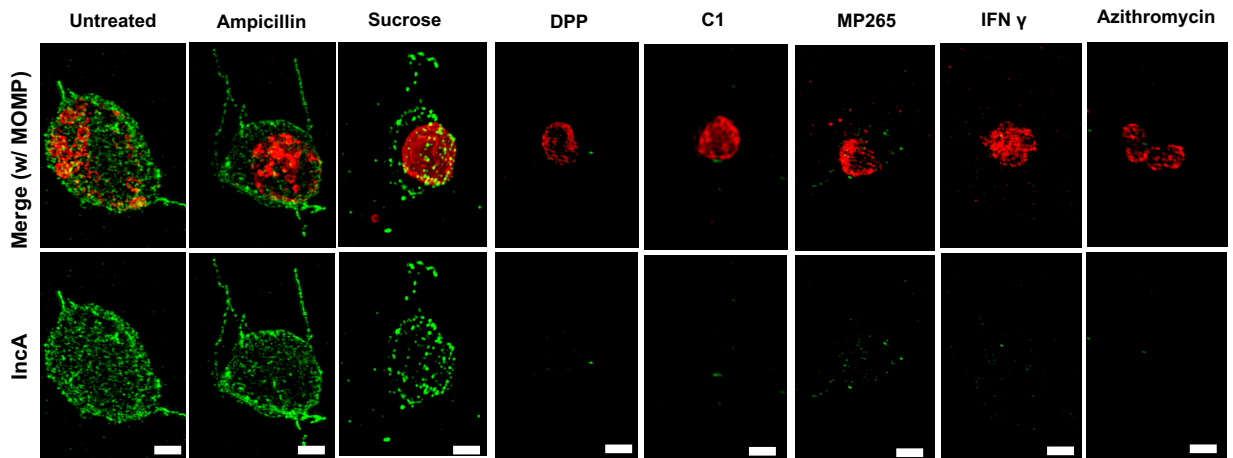
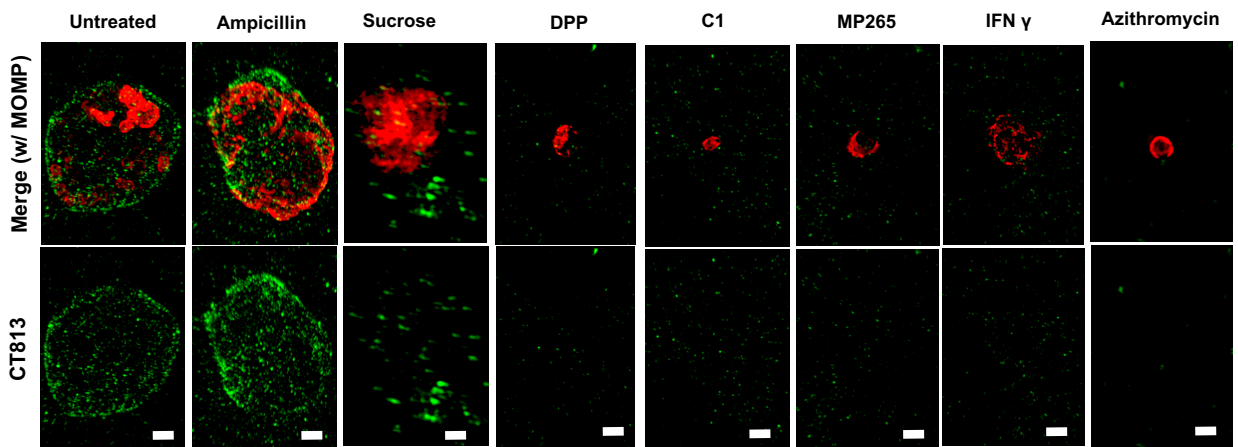


**a****b**

**Figure S4: *Chlamydia* ABs differ in presentation of mid- and late-stage inclusion membrane proteins.** Immunolabeling of inclusion membrane proteins IncA (**a**), and CT813 (**b**) in *Chlamydia*-infected cells at 24 hpi. Inc presentation was compared for six different aberrance-inducing conditions with the protein synthesis inhibitor azithromycin used as a control. Scale bars;  $\sim 2 \mu\text{m}$ .