

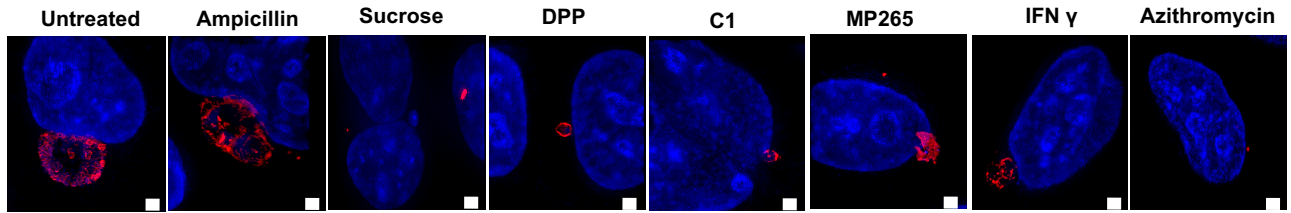
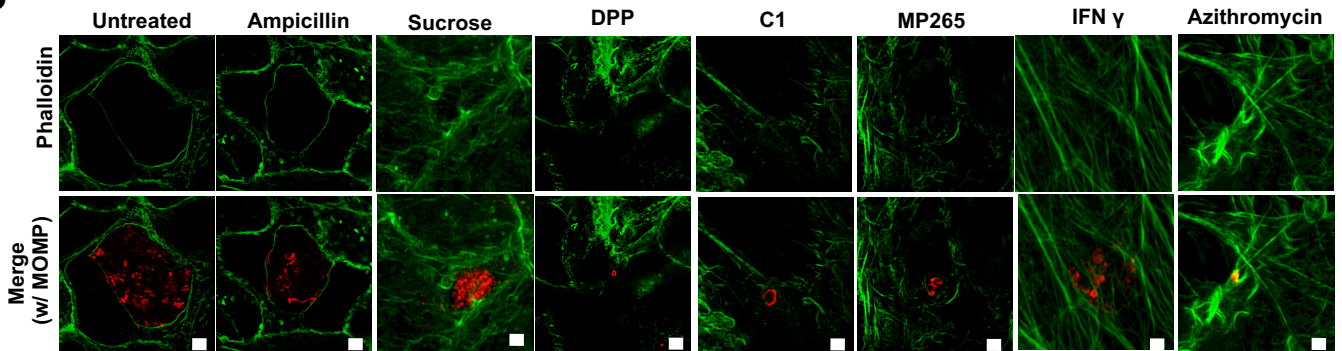
a**b**

Figure S5. Assessment of inclusion trafficking to the nucleus and actin cage formation. (a) The proximity of normal and aberrant *Chlamydia* inclusions to host cell nuclei was assessed by immunolabeling of normal and aberrant forms of *Chlamydia*. Nuclei were stained with Hoechst solution (blue) at 24 hpi. (b) The presence of actin cages about the inclusion periphery of normal and ABs of *Chlamydia* was assessed by staining cells with conjugated phalloidin at 46 hpi. *Chlamydia* was visualized utilizing MOMP monoclonal antibodies. Images are representative of 10-20 viewing planes carried out over three biological replicates. Scale bars; $\sim 5 \mu\text{m}$.