

# Immunomodulatory role of Parkinson's disease 7 in inflammatory bowel disease

Rita Lippai et. al

## SUPPLEMENT

Original images of western blot membranes, explanations, sample identifications are detailed below.

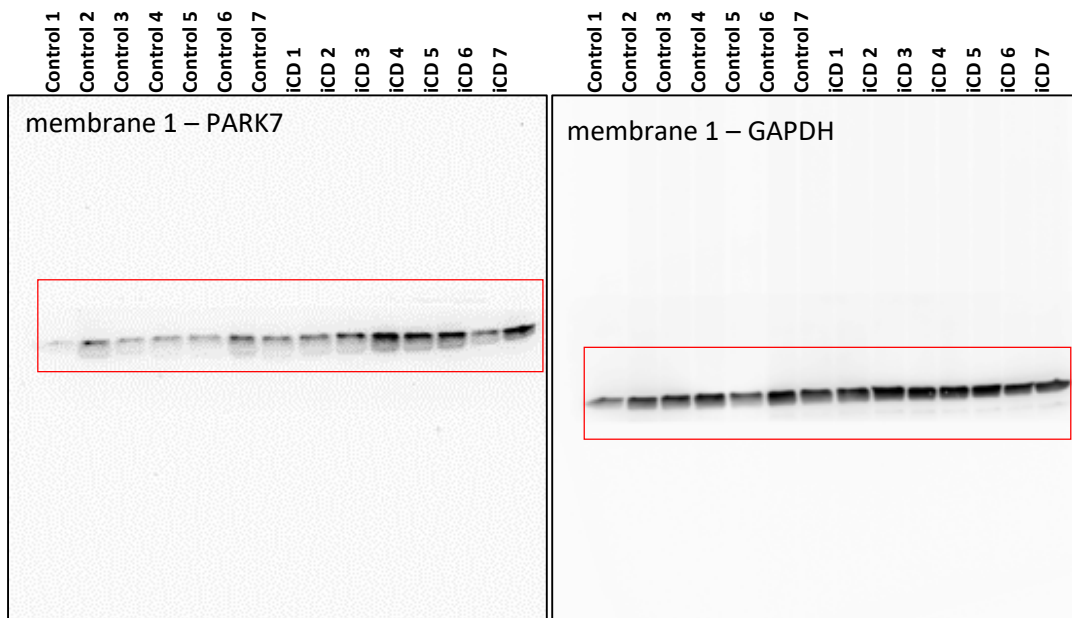
After blotting, the nitrocellulose membranes were cut in two pieces based on the molecular weight markers. The investigated proteins (PARK7,  $\beta$ -actin or GAPDH) from the identical samples were present on separate membrane pieces, avoiding the interference derived from the multiple chemiluminescent signals of different proteins.

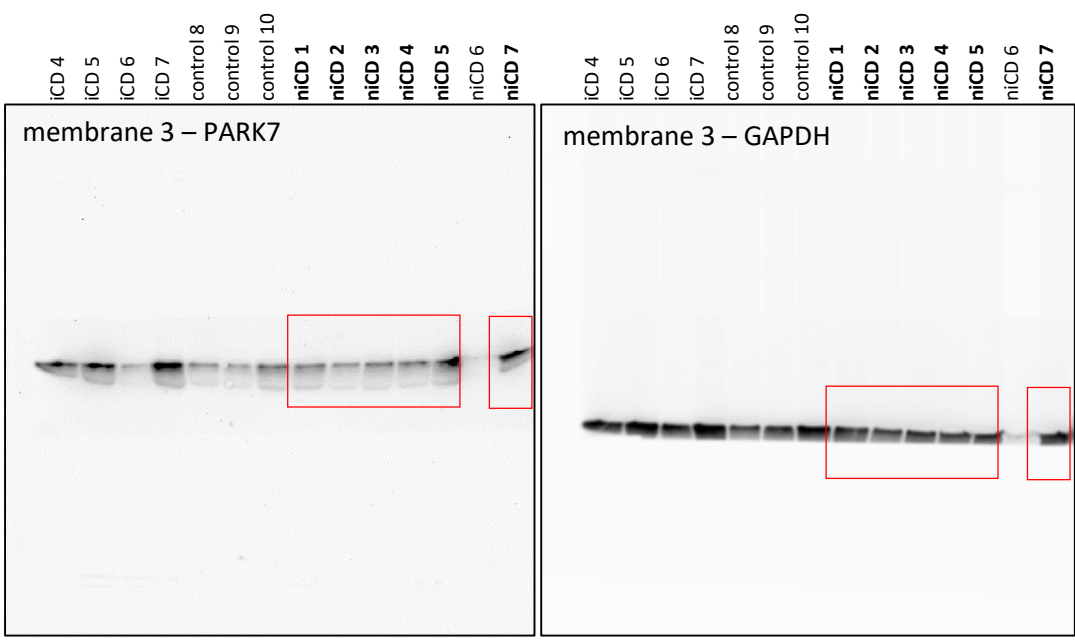
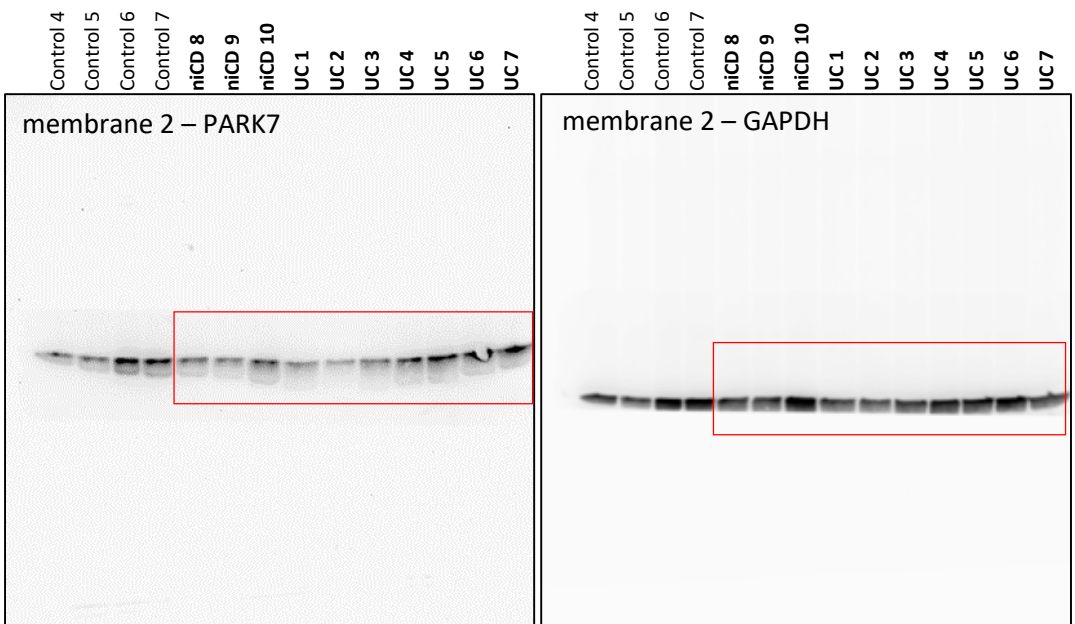
Samples included in representative images in the manuscript are highlighted with bold characters and denoted by red boxes.

### Figure 1/c

#### sample order in Figure 1/c:

Control 1, Control 2, Control 3, Control 4, Control 5, Control 6, Control 7 | iCD 1, iCD 2, iCD 3, iCD 4, iCD 5, iCD 6, iCD 7 | niCD 7, niCD 5, niCD 4, niCD 3, niCD 2, niCD 1, niCD 10, niCD 9, niCD 8 | UC 1, UC 2, UC 3, UC 4, UC 5, UC 6, UC 7



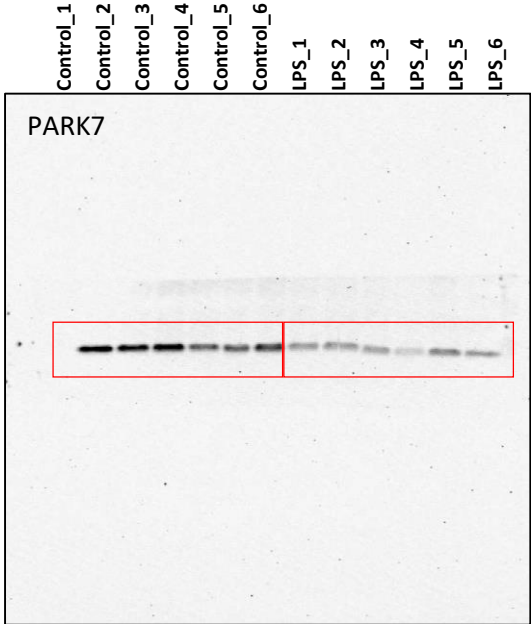


**Figure 2/g**

sample order in Figure 2/g:

Control\_1, Control\_2, Control\_3, Control\_4, Control\_5, Control\_6 |

LPS\_1, LPS\_2, LPS\_3, LPS\_4, LPS\_5, LPS\_6

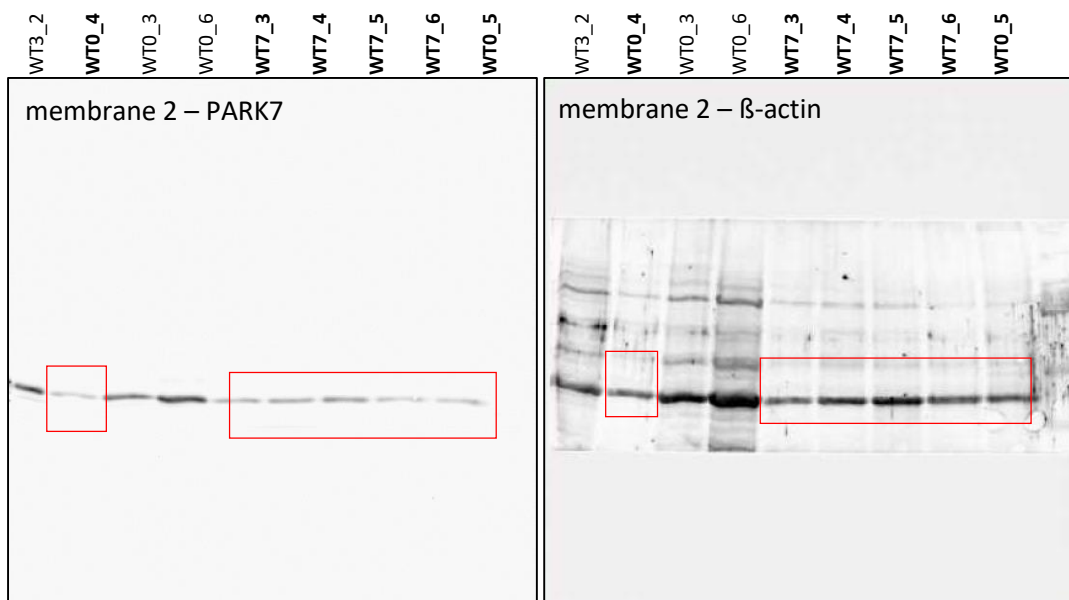
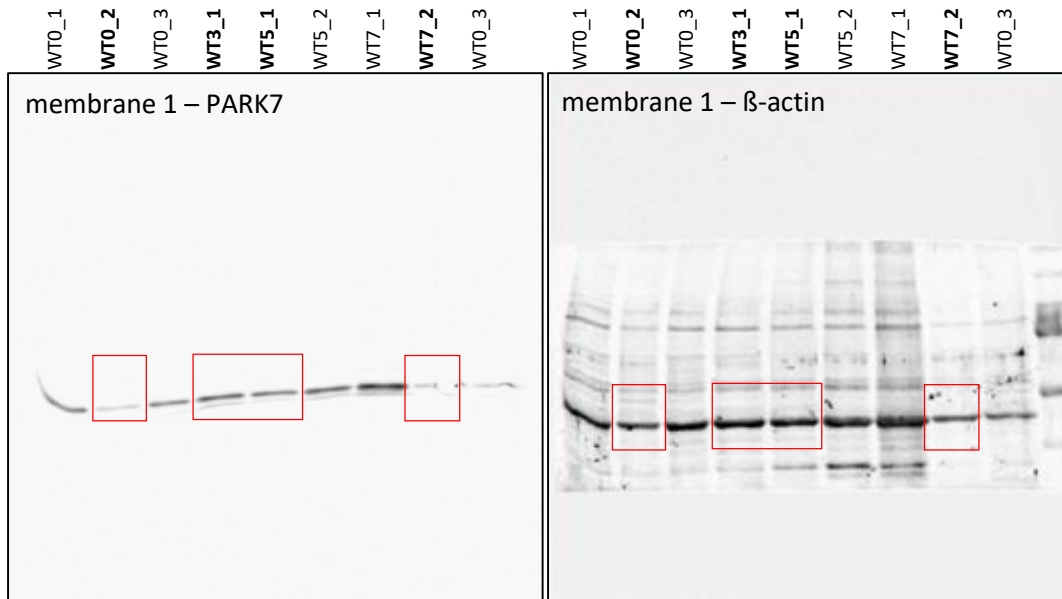


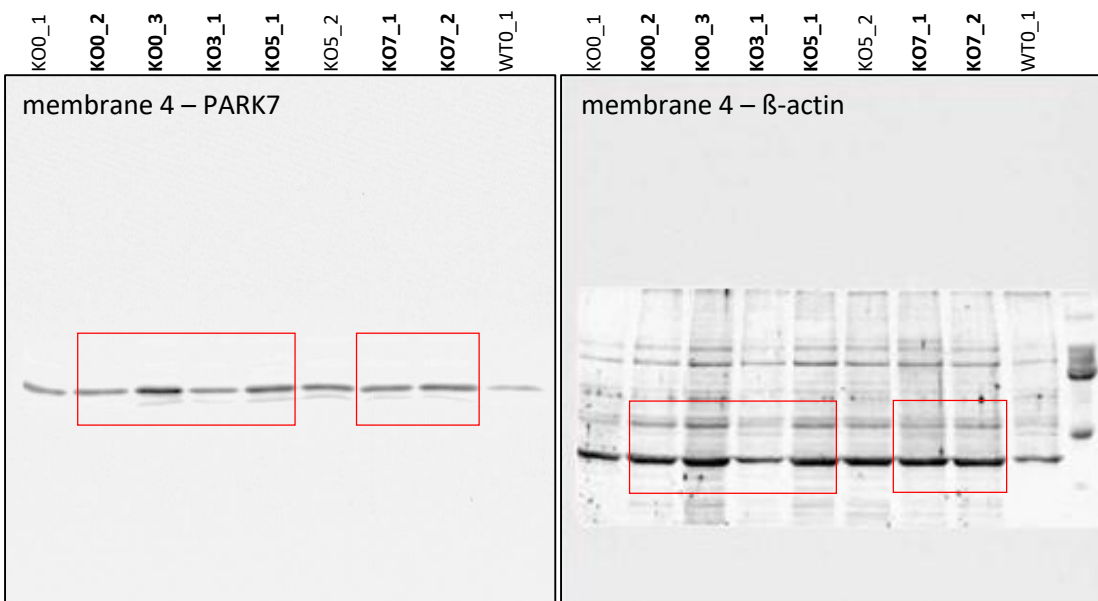
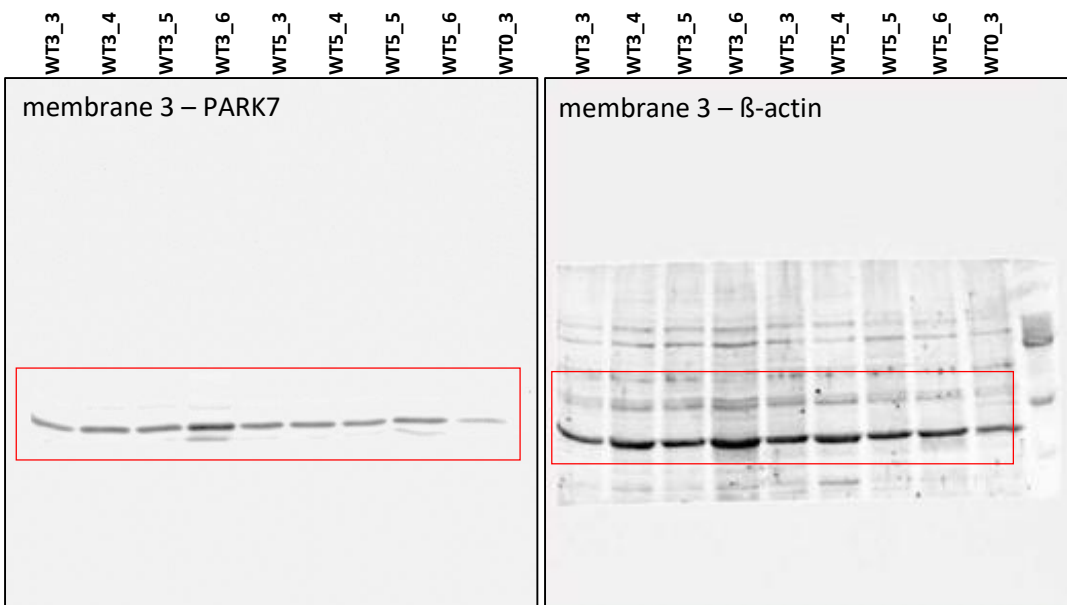
**Figure 3/e**

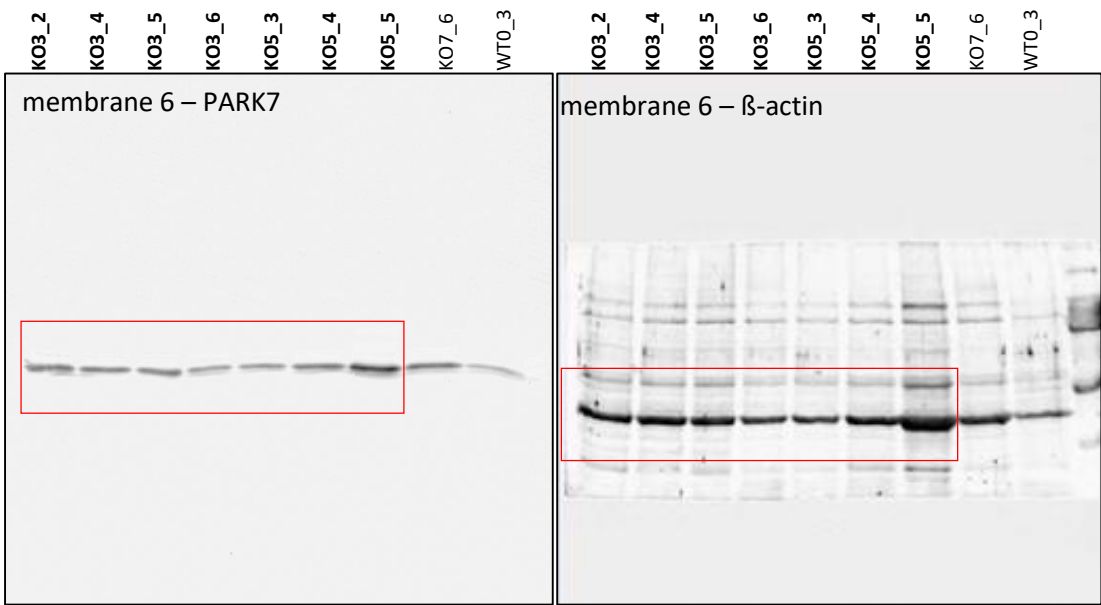
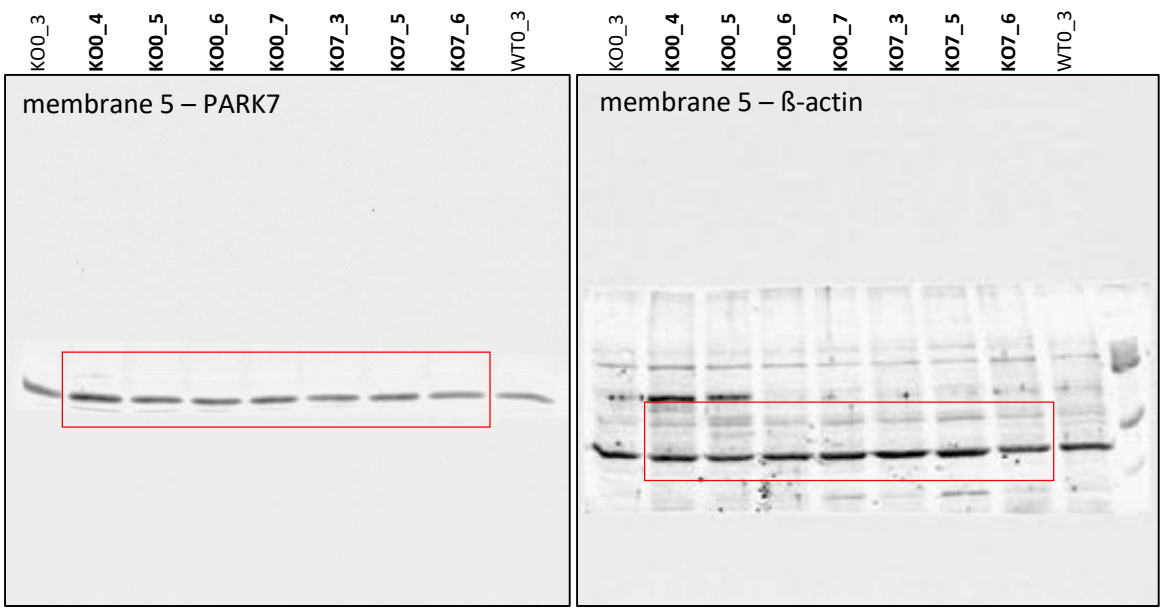
**sample order in Figure 3/e:**

WT → WT0\_2, WT0\_4, WT0\_3, WT0\_1, WT0\_5 | WT3\_3, WT3\_4, WT3\_5, WT3\_6, WT3\_1 | WT5\_3, WT5\_4, WT5\_5, WT5\_6, WT5\_1 | WT7\_3, WT7\_4, WT7\_5, WT7\_6, WT7\_2

*IL17* <sup>-/-</sup> → KO0\_2, KO0\_3, KO0\_4, KO0\_5, KO0\_6 | KO3\_2, KO3\_4, KO3\_5, KO3\_6, KO3\_1 | KO5\_3, KO5\_4, KO5\_5, KO5\_6, KO5\_1 | KO0\_7, KO7\_3, KO7\_4, KO7\_5, KO7\_6, KO7\_2



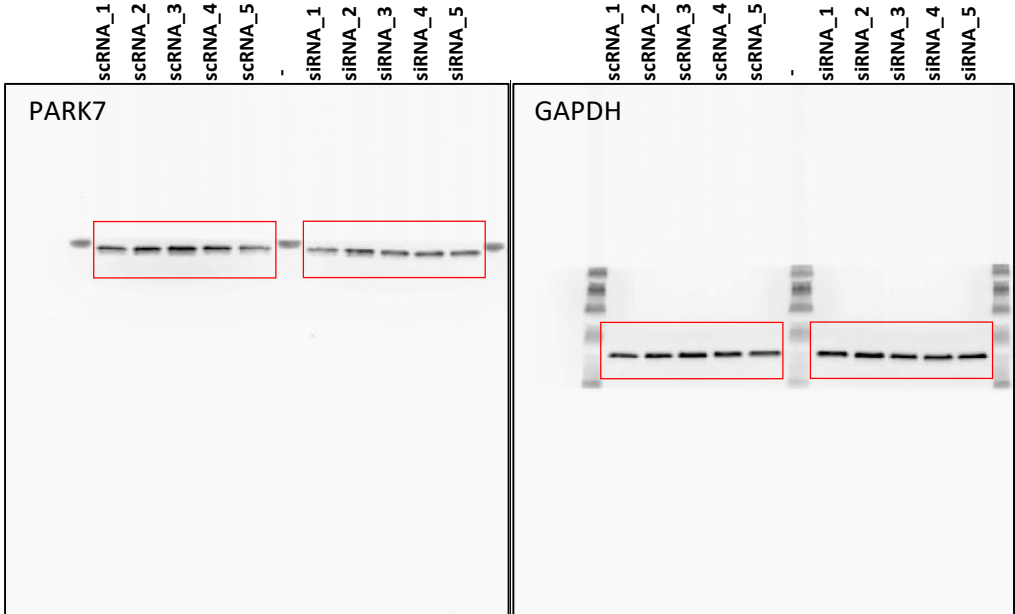




**Figure 4/f**

sample order in 4/f:

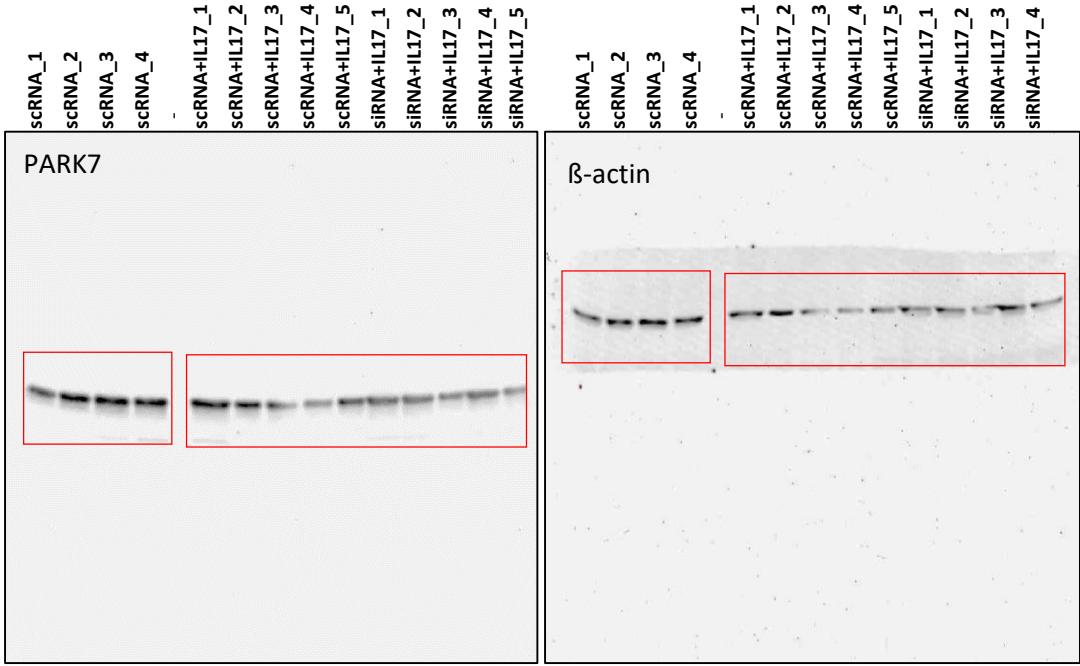
scRNA\_1, scRNA\_2, scRNA\_3, scRNA\_4, scRNA\_5 | siRNA\_1, siRNA\_2, siRNA\_3, siRNA\_4, siRNA\_5



**Figure 4/g**

sample order in 4/g:

scRNA\_1, scRNA\_2, scRNA\_3, scRNA\_4 | scRNA+IL17\_1, scRNA+IL17\_2, scRNA+IL17\_3, scRNA+IL17\_4,  
scRNA+IL17\_5 | siRNA+IL17\_1, siRNA+IL17\_2, siRNA+IL17\_3, siRNA+IL17\_4, siRNA+IL17\_5

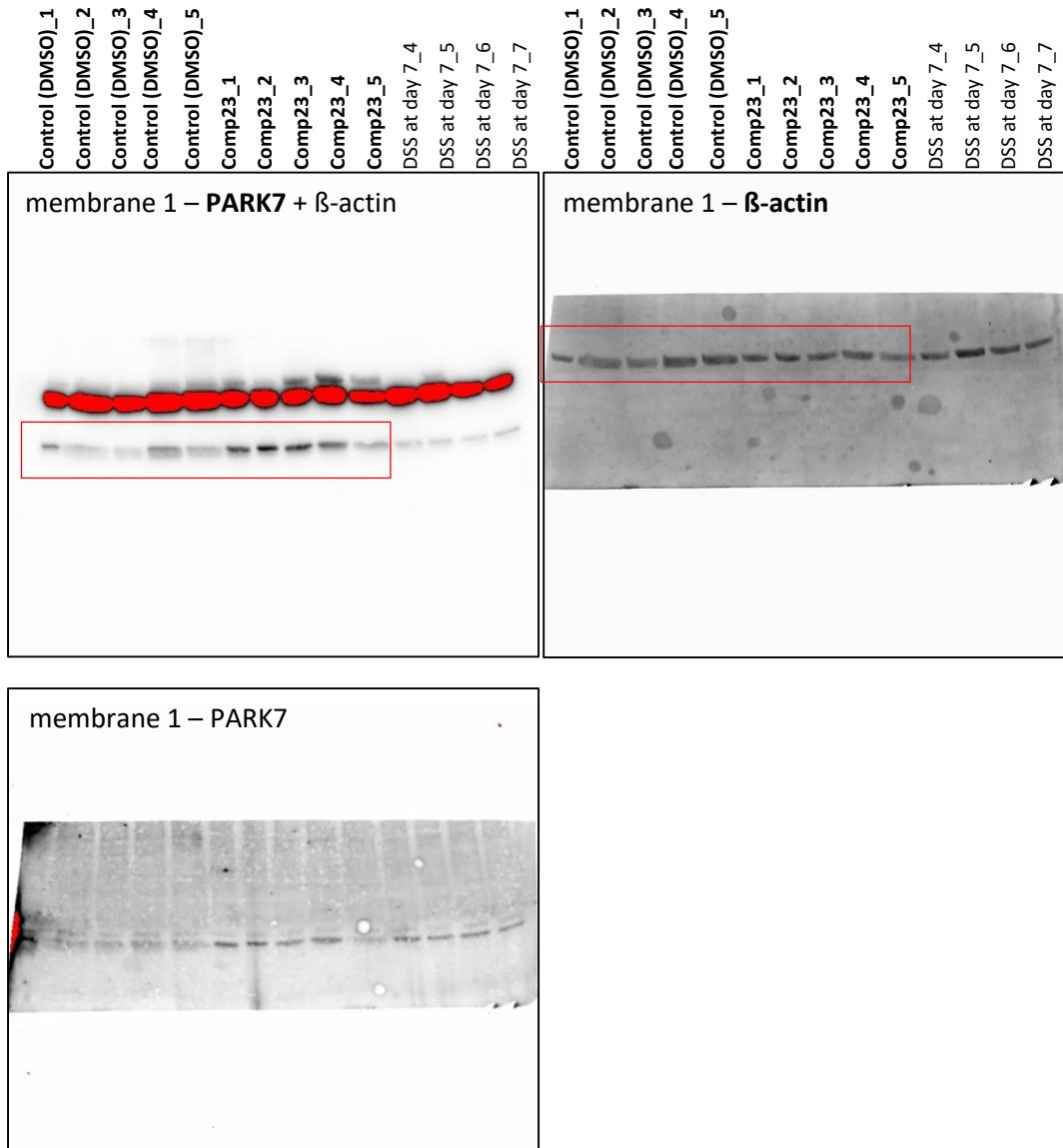




**Figure 5/I**

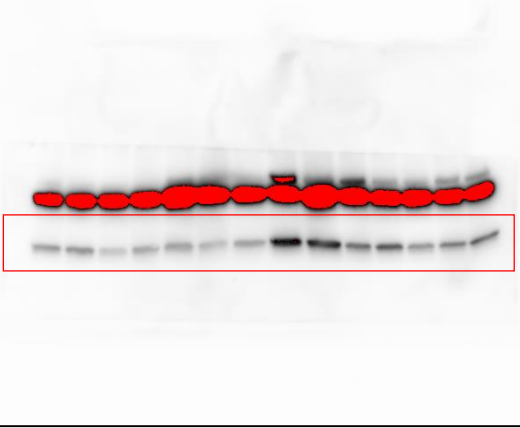
sample order in Figure 5/I:

Control (DMSO)\_1, Control (DMSO)\_2, Control (DMSO)\_3, Control (DMSO)\_4, Control (DMSO)\_5 | Comp23\_1, Comp23\_2, Comp23\_3, Comp23\_4, Comp23\_5 | DSS at day 7\_1, DSS at day 7\_2, DSS at day 7\_3, DSS at day 7\_4, DSS at day 7\_5, DSS at day 7\_6, DSS at day 7\_7 | DSS+Comp23 at day 7\_1, DSS+Comp23 at day 7\_2, DSS+Comp23 at day 7\_3, DSS+Comp23 at day 7\_4, DSS+Comp23 at day 7\_5, DSS+Comp23 at day 7\_6, DSS+Comp23 at day 7\_7



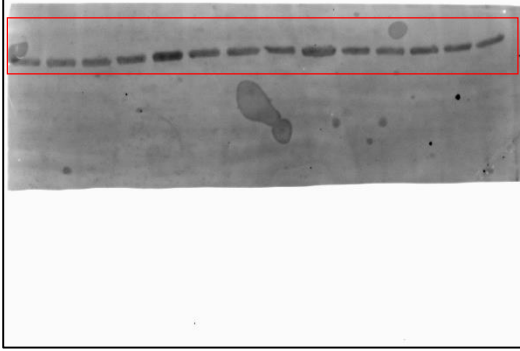
DSS at day 7\_1  
DSS at day 7\_2  
DSS at day 7\_3  
DSS at day 7\_4  
DSS at day 7\_5  
DSS at day 7\_6  
DSS at day 7\_7  
DSS+Comp23 at day 7\_1  
DSS+Comp23 at day 7\_2  
DSS+Comp23 at day 7\_3  
DSS+Comp23 at day 7\_4  
DSS+Comp23 at day 7\_5  
DSS+Comp23 at day 7\_6  
DSS+Comp23 at day 7\_7

membrane 2 – **PARK7** +  $\beta$ -actin



DSS at day 7\_1  
DSS at day 7\_2  
DSS at day 7\_3  
DSS at day 7\_4  
DSS at day 7\_5  
DSS at day 7\_6  
DSS at day 7\_7  
DSS+Comp23 at day 7\_1  
DSS+Comp23 at day 7\_2  
DSS+Comp23 at day 7\_3  
DSS+Comp23 at day 7\_4  
DSS+Comp23 at day 7\_5  
DSS+Comp23 at day 7\_6  
DSS+Comp23 at day 7\_7

membrane 2 –  $\beta$ -actin



membrane 2 – PARK7

