

## **Engineered Mucoperiosteal Scaffold for Cleft Palate Regeneration towards the Non-immunogenic Transplantation**

**M. I. Rizzo<sup>1\*</sup> and L. Tomao<sup>2\*</sup>, S. Tedesco<sup>3</sup>, M. Cajazzo<sup>1</sup>, M. Esposito<sup>1</sup>, C. De Stefanis<sup>4</sup>, A. M. Ferranti<sup>5</sup>, D. Mezzogori<sup>5</sup>, A. Palmieri<sup>6</sup>, G. Pozzato<sup>3</sup>, M. Algeri<sup>2</sup>, F. Locatelli<sup>2,7\*</sup> and L. Leone<sup>5, 8\*</sup> and M. Zama<sup>1\*</sup>**

### ***Affiliations***

<sup>1</sup> Plastic and Maxillofacial Surgery Department, Bambino Gesù Children's Hospital, IRCCS, Rome, Italy.

<sup>2</sup> Department of Pediatric Onco-Hematology and Cell and Gene Therapy, Bambino Gesù Children's Hospital, IRCCS, Rome, Italy.

<sup>3</sup> Telea Biotech e Telea Electronic Engineering, Sandrigo (VI), Italy.

<sup>4</sup> Research Laboratories, histology core facility, Bambino Gesù Children's Hospital, IRCCS, Rome, Italy

<sup>5</sup> Department of Neuroscience, Università Cattolica del Sacro Cuore, 00168 Rome, Italy

<sup>6</sup> Department of Cardiovascular, Endocrine-metabolic Diseases and Aging, National Institute of Health, Rome, Italy

<sup>7</sup> Department of Gynecology/Obstetrics & Pediatrics, Sapienza University of Rome, Rome, Italy.

<sup>8</sup> Fondazione Policlinico Universitario A. Gemelli IRCCS, 00168 Rome, Italy

\* These Authors contributed equally.

### ***Corresponding author***

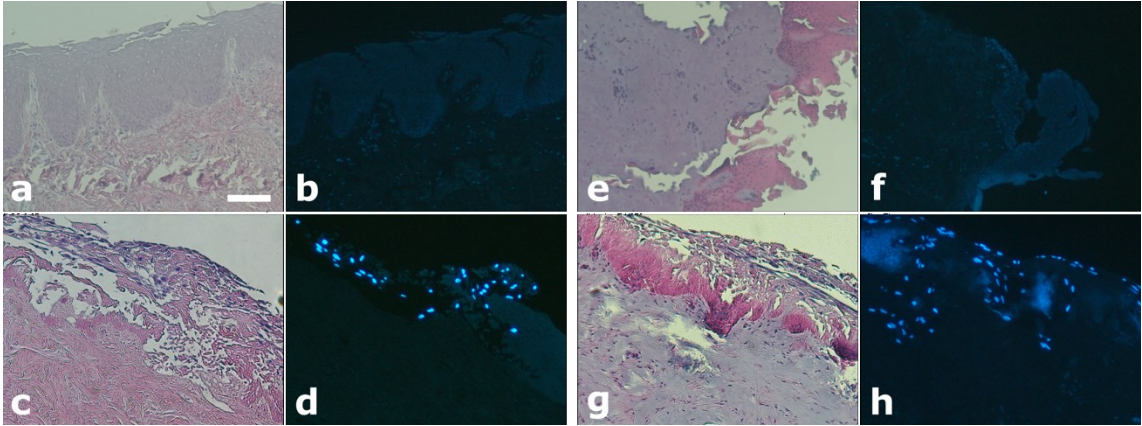
Dr. Lucia Leone

e-mail: [lucia.leone@unicatt.it](mailto:lucia.leone@unicatt.it)

Department of Neuroscience, Università Cattolica del Sacro Cuore, 00168 Rome, Italy

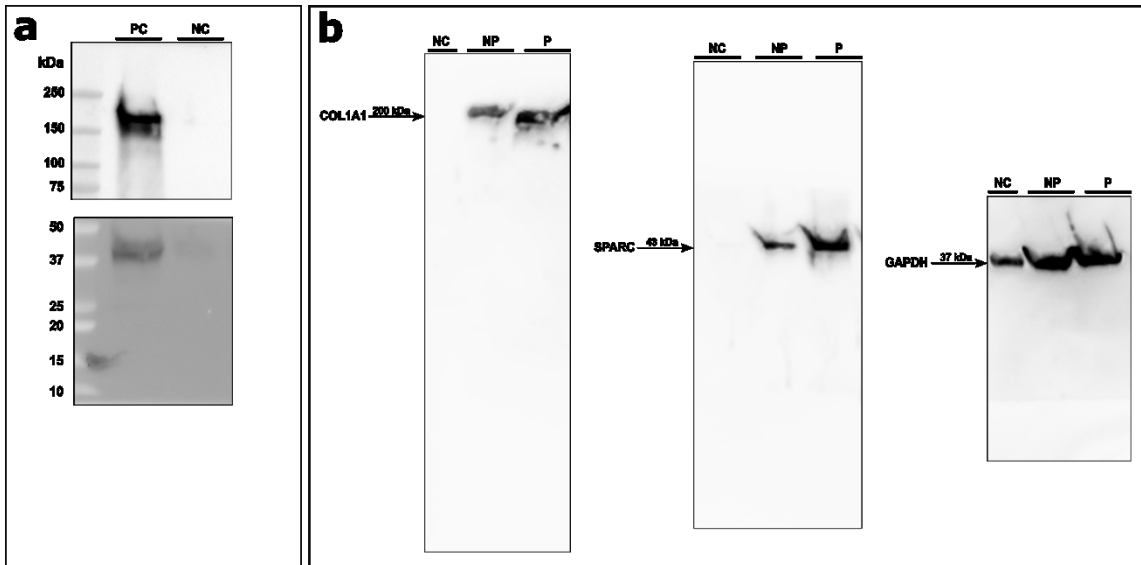
Fondazione Policlinico Universitario A. Gemelli IRCCS, 00168 Rome, Italy

## Supplemental Figure 1



**Supplemental Figure 1 (a – h)** Light and fluorescence microscopy images of non-pored (a – d) and pored (e – h) scaffolds stained either with HE (a, c, e, g) or DAPI (b, d, f, h), before and after seeding with MSCs cultured with hPL. (a, b, e, f) Pre-seeding images of both non-pored (a – b) and pored (e – f) scaffolds reveal no presence of MSCs. After 14 days post-seeding, MSCs have superficially repopulated the non-pored scaffold (c – d) while in the pored one (g – h) a repopulation of the channels, with a good extent, was observed. All the figures in the panel are the same scale; bar – 100  $\mu\text{m}$ .

## Supplemental Figure 2



**Supplemental Figure 2 (a – b)** Representative Western blot (WB) images of COL1A1 and SPARC in positive and negative controls, and in non-pored (NP) and pored (P) samples. **(a)** WB of positive control (PC) and negative control (NC) samples immunoblotted with anti-COL1A1 and anti-SPARC to evaluate the specificity of the antibodies and their predicted molecular weight **(b)** Full length WB of NC, NP and P samples seeded with hBM-MSCs for 14 days and immunoblotted for COL1A1 and SPARC, and for GAPDH as loading control.