



**Supplementary Information for**  
Observing the subglacial hydrology network and its dynamics with a  
dense seismic array

Ugo Nanni<sup>1</sup>, Florent Gimbert<sup>1</sup>, Philippe Roux<sup>2</sup> and Albanne Lecointre<sup>2</sup>

<sup>1</sup>, IGE, Univ. Grenoble Alpes, CNRS, IRD, Grenoble, France

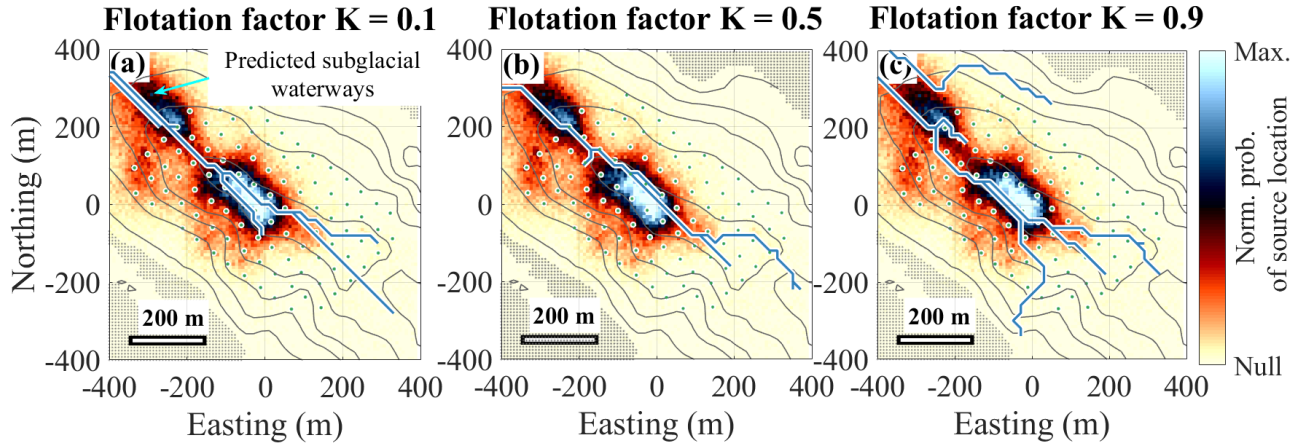
<sup>2</sup>, ISTerre, Univ. Grenoble Alpes, Univ. Savoie Mont Blanc, CNRS, IRD, IFSTTAR, Grenoble,  
France

\* Ugo Nanni

**Email:** [ugo.nanni@univ-grenoble-alpes.fr](mailto:ugo.nanni@univ-grenoble-alpes.fr)

**This PDF file includes:**

Figures S1



**Figure S1.**

Two-dimensional representation of the normalized probability of the source location obtained with  $8 \times 8$  m<sup>2</sup> pixels grid for the study area for the two MFP output ranges [0.07-0.16] as shown in Fig. 2d. The blue line shows the subglacial waterways as predicted from hydraulic potential calculations for three different values of flotation fraction  $K$  (see Methods for details). Green dots show seismic sensors location. Contour lines show the 50-m-spaced ice thickness contours, as shown in Figure 1. The gray shading shows ice-free areas.