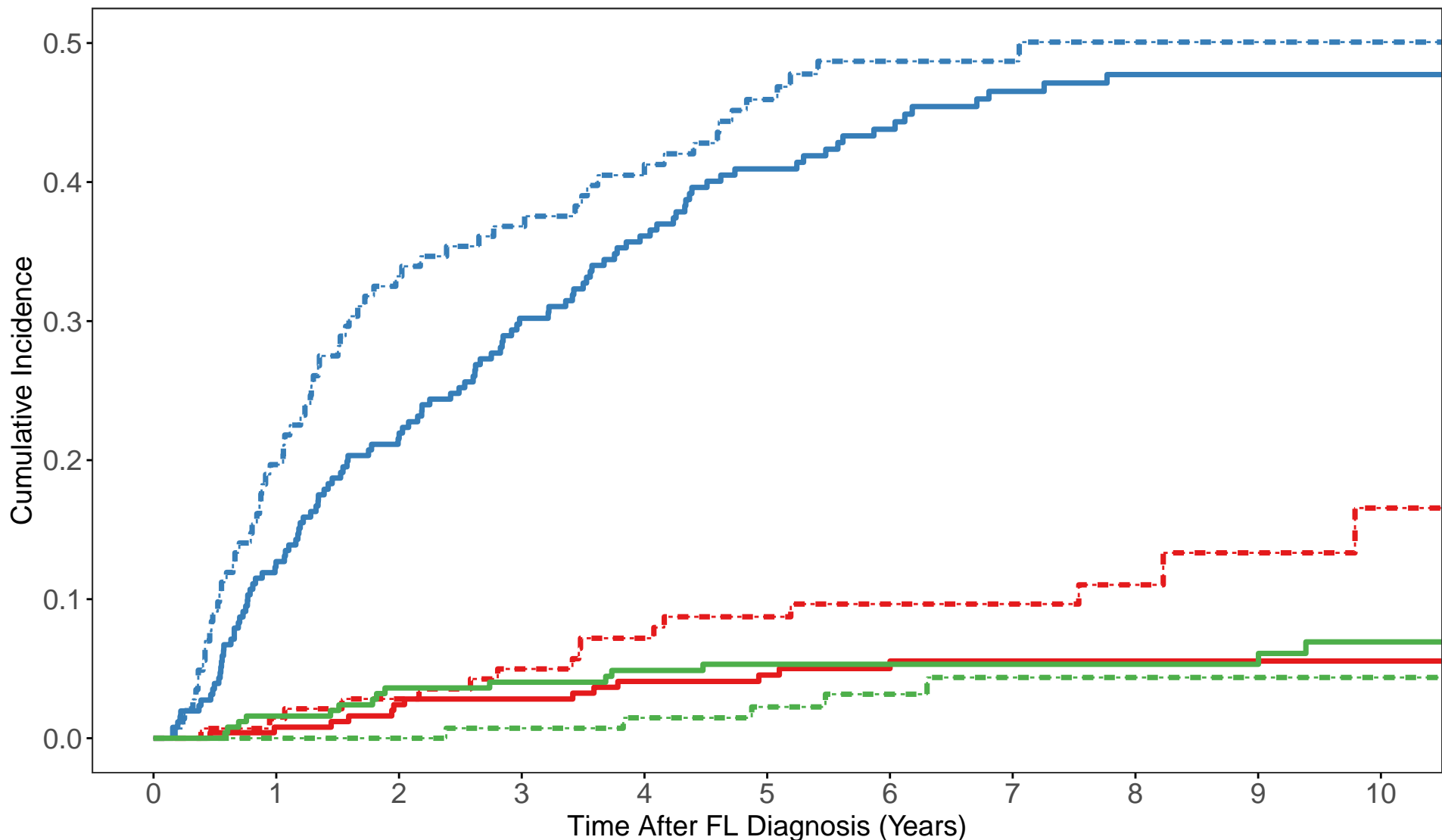


Figure 1A

Follicular W/W GELF Criteria Transformation & Therapy w/ Death as a Competing Risk



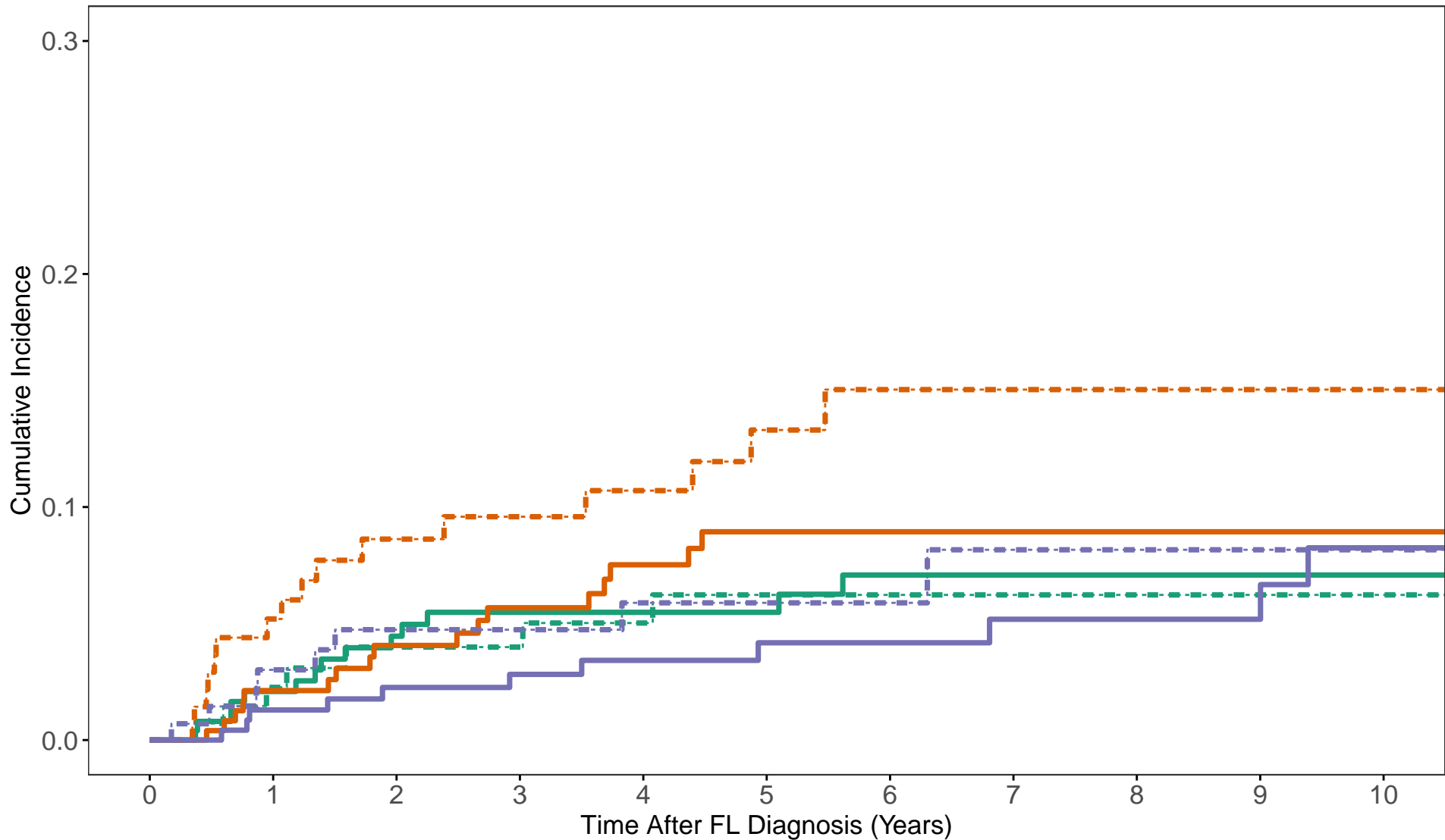
— GELF:Negative - - - GELF:Positive - - - Transformation — Therapy — Death

Number at risk

401 324 268 228 193 155 121 99 77 63 49

Figure 1B

Follicular W/W GELF Criteria Cause of Death Competing Risks



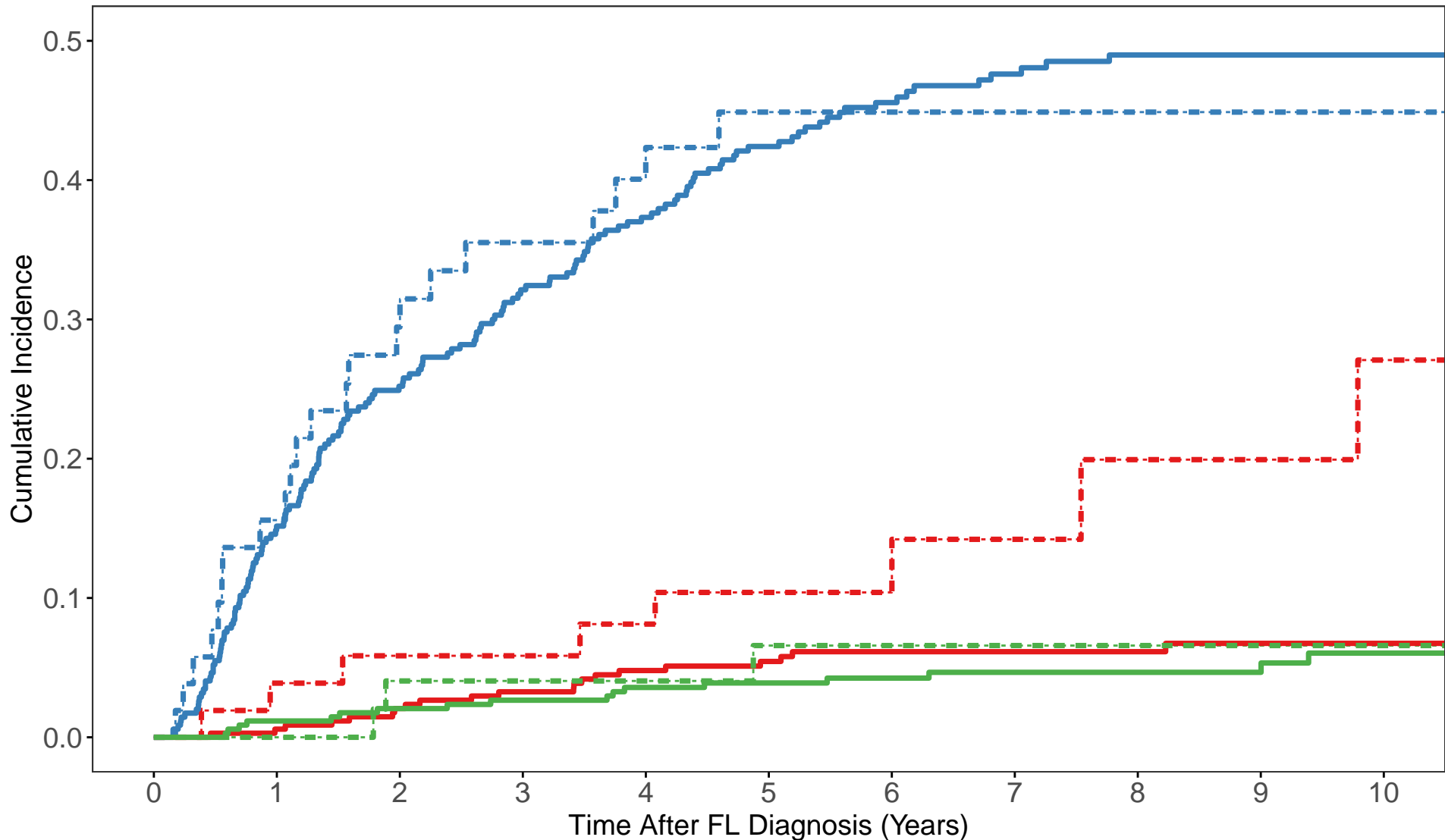
— GELF:Negative - - - GELF:Positive — Lymphoma-Related — Non-Lymphoma-Related — Unknown

Number at risk

401 324 268 228 193 155 121 99 77 63 49

Figure 2A

Follicular W/W BNLI Criteria Transformation & Therapy w/ Death as a Competing Risk



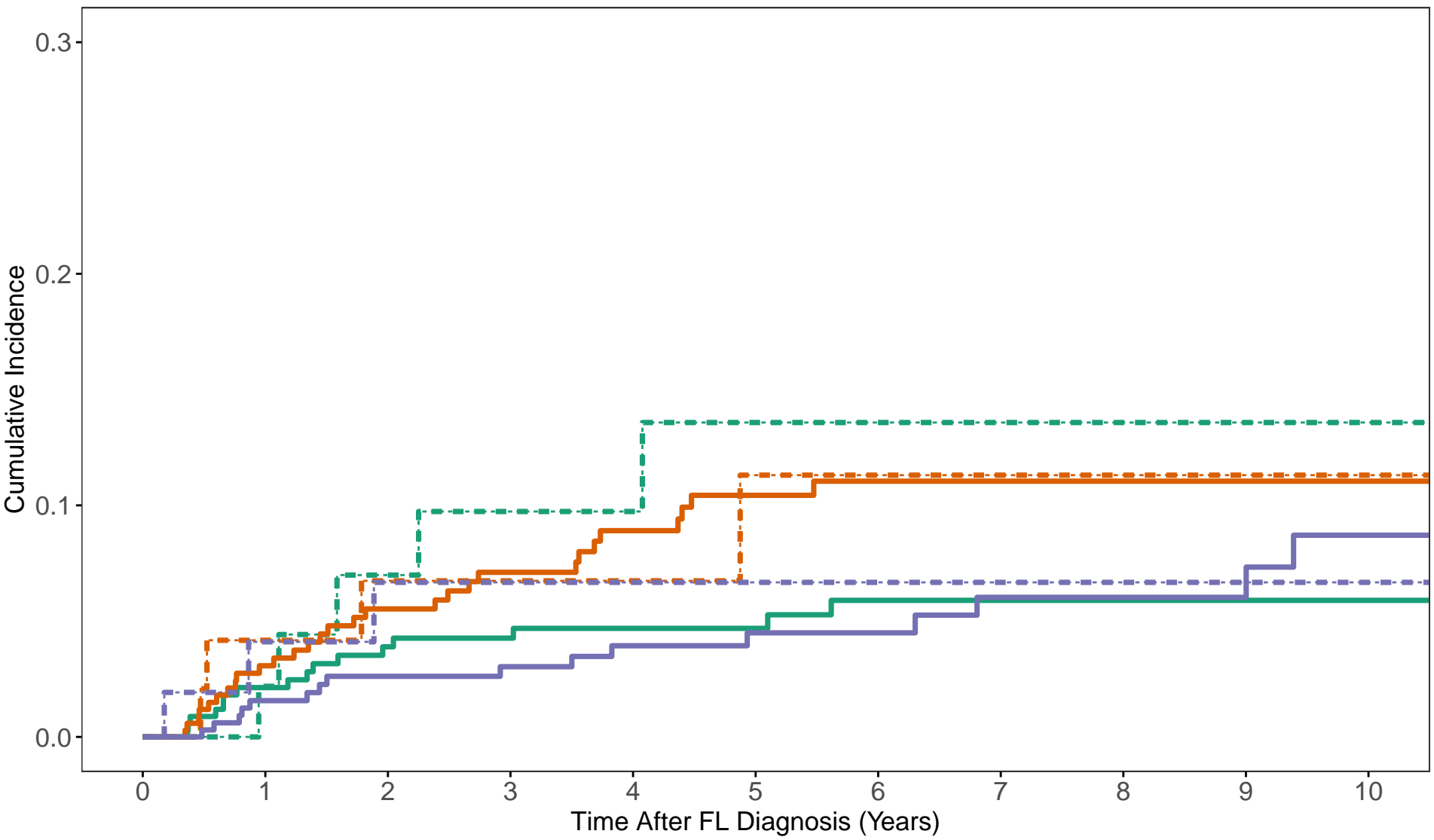
— Transformation — Therapy — Death — BNLI:Negative - - - BNLI:Positive

Number at risk

401 324 268 228 193 155 121 99 77 63 49

Figure 2B

Follicular W/W BNLI Criteria Cause of Death Competing Risks



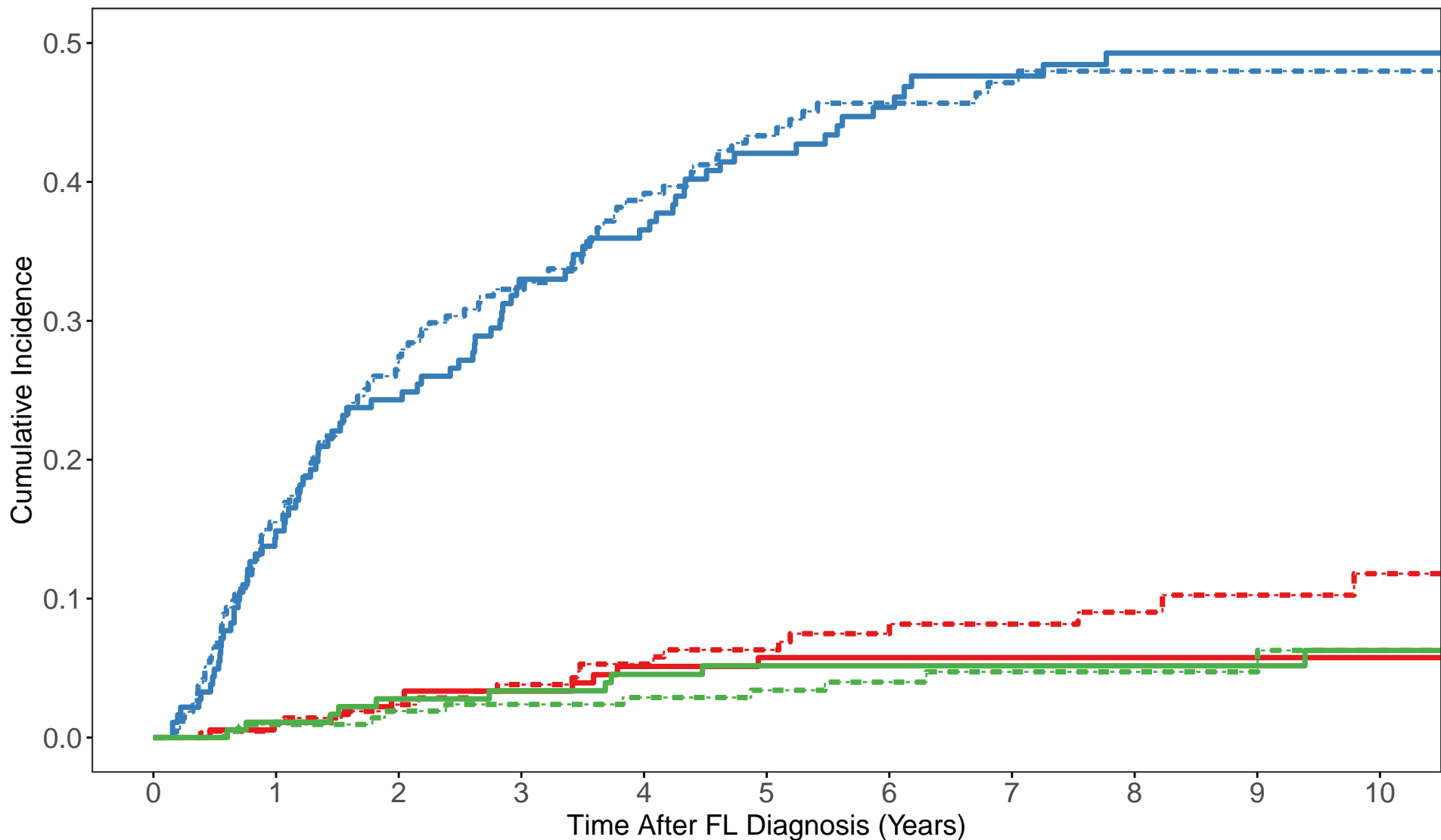
— Lymphoma-Related — Non-Lymphoma-Related — Unknown — BNLI:Negative - - - BNLI:Positive

Number at risk

401 324 268 228 193 155 121 99 77 63 49

Figure 3A

Follicular W/W GITMO Criteria Transformation & Therapy w/ Death as a Competing Risk



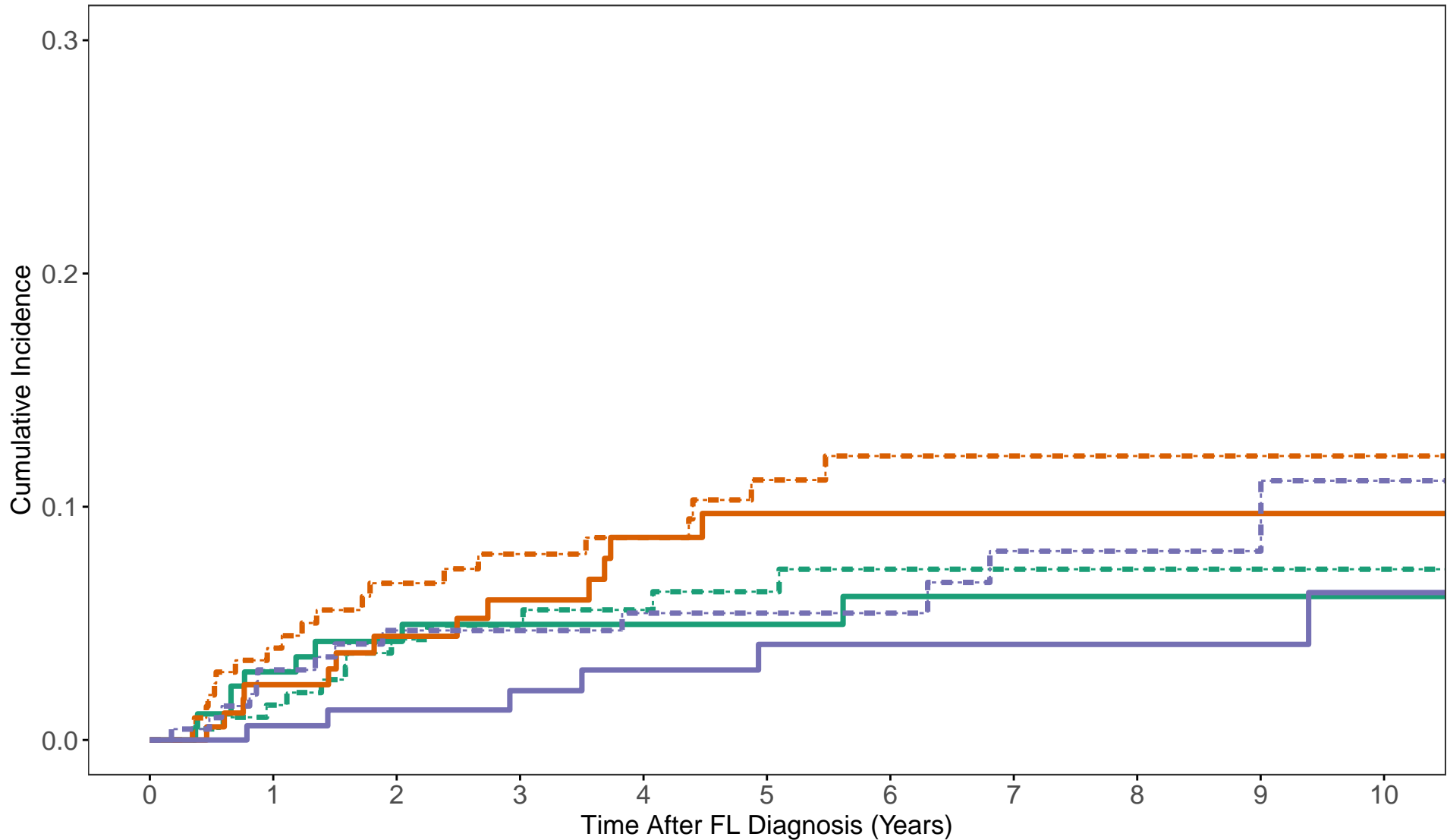
— GITMO:Negative - - - GITMO:Positive — Transformation — Therapy — Death

Number at risk

401 324 268 228 193 155 121 99 77 63 49

Figure 3B

Follicular W/W GITMO Criteria Cause of Death Competing Risks



Number at risk

401

324

268

228

193

155

121

99

77

63

49