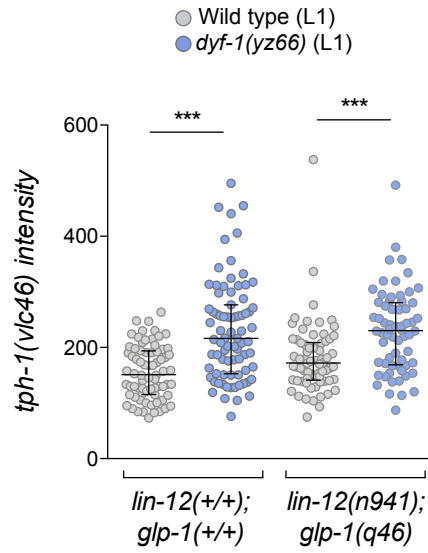
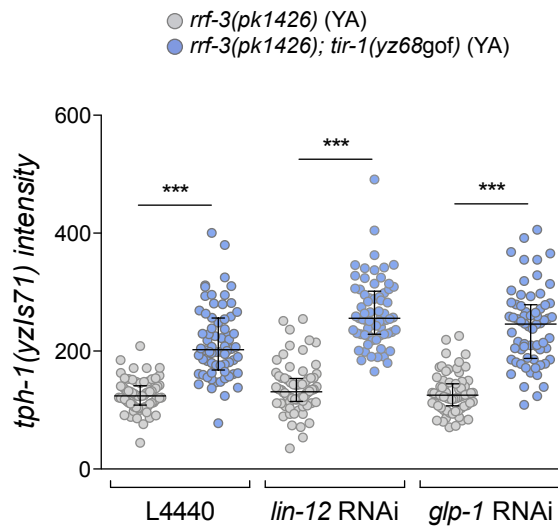


A Cilium morphology defects



B Pathogenic bacteria



Supplementary Figure 7

**Supplementary Figure 7. *lin-12* and *glp-1* Notch receptors are not required for *tph-1* upregulation under specific stimuli.**

A) L1 ADF mNeonGreen intensity quantification of *tph-1(vlc46)* endogenous reporter in *dyf-1(yz66)* mutants shows increased levels of *tph-1* expression also in triple *dyf-1(yz66);lin-12(n941)glp-1(q46)* mutants suggesting this plastic response is independent of Notch signalling. Median and IQR are represented. See S1 Data for numerical values.

B) *tir-1(yz68gof)* induction of *yzIs71(tph-1::gfp)* reporter is also observed in animals treated with *lin-12* and *glp-1* RNAi, suggesting *tph-1* response to pathogenic bacteria is not mediated by Notch signalling. Median and IQR are represented. See S1 Data for numerical values.