

Supplementary Table S1 Table of studies included in the systematic review

Author	Journal	Publication year	Number of cases
Ahrari et al ¹³	Journal of Neurological Surgery Reports	2015	1
Alzahrani et al ¹⁵	Case Reports in Otolaryngology Print	2011	1
Amaral et al ¹⁶	Medicina Oral Patologia Oral y Cirugia Bucal	2008	1
Avitia and Osborne ¹⁷	Ear Nose & Throat Journal	2007	1
Barosa et al ¹⁸	European Annals of Otorhinolaryngology, Head and Neck Diseases	2014	5
Bone et al ¹⁹	Annals of Otology, Rhinology, and Laryngology	1973	1
Bradley et al ²⁰	Journal Laryngology and Otology	1988	1
Bundgaard et al ²¹	Archive of Otorhinolaryngology	1988	1
Chaudhari et al ²²	Bombay Hospital Journal	2015	1
Chennupati et al ²³	International Journal of Pediatric Otorhinolaryngology	2008	1
Donaldson et al ²⁴	International Journal of Pediatric Dental	2004	1
Echchikhi et al ¹¹	Journal of Medical Case Reports	2016	1
Epley et al ²⁵	Ophthalmic Plastic & Reconstructive Surgery	1998	1
Erdur et al ²⁶	Journal of Craniofacial Surgery	2018	1
Gadwal et al ²⁷	Cancer	2001	3
Galera-Ruiz et al ²⁸	Auris Nasus Larynx	2001	1
Gipolous et al ²⁹	Journal de radiologie, d'électrologie et archives d'électricité médicale	1975	1
Gonzalez et al ³⁰	Journal of Radiology Case Reports	2016	1
Gupta et al ³¹	Annals of Otology, Rhinology, and Laryngology	1990	1
Ha et al ³²	Laryngoscope	1999	3
Harris et al ³³	Laryngoscope	1963	2
Ito et al ³⁴	Neuro-Oncology	2010	2
Kachhara et al ³⁵	Neurologia Medico-Chirurgica (Tokyo)	1999	1
Khosla et al ³⁶	Indian Pediatrics	1993	1
Kohanawa et al ³⁷	Auris Nasus Larynx	2005	1
Lee et al ³⁸	British Journal of Ophthalmology	2014	1
Lee et al ³⁹	Singapore medical journal	2001	1
Malalis et al ⁴⁰	Neuro-Ophthalmology	2013	1
Mark et al ⁴¹	Archives of Otolaryngology–Head & Neck Surgery	1991	3
Mathkour et al ⁴²	World Neurosurgery	2016	1
Oakley et al ⁴³	Ear, Nose & Throat Journal	2011	1
Oda et al ⁷	Head & Neck: Journal for the Sciences and Specialties of the Head and Neck	1997	3
Okinaka and Takahashi ⁴⁴	Journal of Oral and Maxillofacial Surgery	1997	1
Papsidero et al ⁴⁵	Otolaryngology Head and Neck Surgery	1982	1
Patel et al ⁶³	Cancer	2011	4
Park et al ⁴⁶	Skeletal Radiology	2004	1
Park et al ⁴⁷	Journal of Oral and Maxillofacial Surgery	2014	1
Park et al ⁴⁸	Skeletal Radiology	2003	1
Santos-Silva et al ⁴⁹	American Journal of Orthodontics and Dentofacial Orthopedics	2011	1
Sargi et al ⁵⁰	Otolaryngology Head and Neck Surgery	2008	1
Shahid et al ⁵¹	Medcal Journal of Malaysia	2007	1
Sheikh et al ⁵²	Journal of Clinical and Experimental Dentistry	2010	1
Smith et al ⁵³	International Journal of Radiation Oncology Biology Physics	1989	4
Smoron et al ⁵⁴	Sarcoma	1999	1

(Continued)

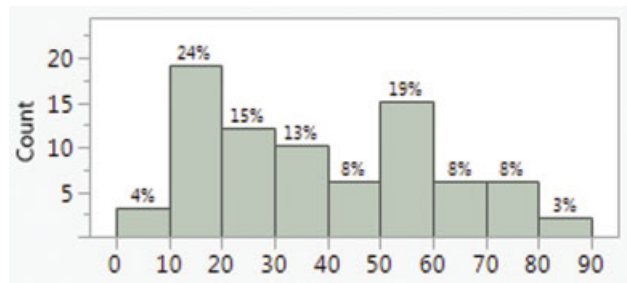
Supplementary Table S1 (Continued)

Author	Journal	Publication year	Number of cases
Stavrakas et al ⁵⁵	Journal of Laryngology and Otology	2016	2
Tseng et al ⁵⁶	Archives of Otolaryngology–Head & Neck Surgery	2005	1
Uysal et al ⁵⁷	Pediatric Hematology Oncology	2001	1
Vlychou et al ⁵⁸	Skeletal Radiology	2007	1
Wei-wei et al ⁵⁹	Laryngoscope	2005	2
Wolfowitz ⁶⁰	Journal of Laryngology Otology	1973	1
Yamada et al ⁶¹	Journal of Medical Case Reports	2013	1
Yamaguchi et al ⁶²	Clinical Oral Investigation	2004	1
Yip et al ¹⁴	Ophthalmology	2003	1

Supplementary Table S2 The institute of health economics quality appraisal checklist for case series

	Barosa ¹⁸	Gadwal ²⁷	Ha ³²	Mark ⁴¹	Harris ³³	Ito ³⁴	Oda ⁷	Patel ⁶³	Smith ⁷⁴	Stavrakas ⁵⁵	Wei-wei ⁵⁹
Study objective											
1. Was the hypothesis/aim/objective of the study clearly stated?	Y	Y	Y	Y	Y	Y	Y	Y	Y	Y	Y
Study design											
2. Was the study conducted prospectively?	N	N	N	N	N	N	N	N	N	N	N
3. Were the cases collected in more than one center?	N	Y	N	N	Y	N	N	N	N	N	N
4. Were patients recruited consecutively?	U	U	U	Y	Y	U	Y	Y	Y	Y	Y
Study population											
5. Were the characteristics of the patients included in the study described?	Y	Y	Y	Y	Y	Y	Y	Y	Y	Y	Y
6. Were the eligibility criteria (i.e., inclusion and exclusion criteria) for entry into the study clearly stated?	Y	Y	P	P	P	P	Y	Y	Y	P	Y
7. Did patients enter the study at a similar point in the disease?	Y	Y	Y	Y	Y	Y	Y	Y	Y	Y	Y
Intervention and cointervention											
8. Was the intervention of interest clearly described?	Y	Y	P	P	Y	P	P	Y	Y	P	Y
9. Were additional interventions (cointerventions) clearly described?	Y	Y	P	P	P	N	P	Y	P	P	P
Outcome measures											
10. Were relevant outcome measures established a priori?	Y	Y	Y	Y	Y	Y	Y	Y	Y	Y	Y
11. Were outcome assessors blinded to the intervention that patients received?	Y	Y	Y	Y	Y	Y	Y	Y	Y	Y	Y
12. Were the relevant outcomes measured using appropriate objective/subjective methods?	Y	Y	Y	Y	Y	Y	Y	Y	Y	Y	Y
13. Were the relevant outcome measures made before and after the intervention?	Y	Y	Y	Y	Y	P	Y	Y	Y	Y	Y
Statistical analysis											
14. Were the statistical tests used to assess the relevant outcomes appropriate?	Y	Y	Y	Y	Y	Y	Y	Y	Y	Y	Y
Results and conclusions											
15. Was follow-up long enough for important events and outcomes to occur?	U	Y	U	U	N	Y	N	Y	Y	N	Y
16. Were losses to follow-up reported?	N	Y	Y	Y	N	N	Y	N	Y	Y	Y
17. Did the study provided estimates of random variability in the data analysis of relevant outcomes?	Y	Y	Y	Y	Y	Y	Y	Y	Y	Y	Y
18. Were the adverse events reported?	N	N	N	N	Y	Y	N	N	N	N	Y
19. Were the conclusions of the study supported by the results?	Y	Y	Y	Y	Y	Y	Y	Y	Y	Y	Y
20. Were both competing interests and sources of support for the study reported?	Y	P	N	N	N	N	N	Y	N	P	N

Abbreviations: N, no; P/U, partial/unclear; Y, yes.



Supplementary Fig. S1 Histogram of age showing bimodal age distribution.