

418 Supplementary Materials

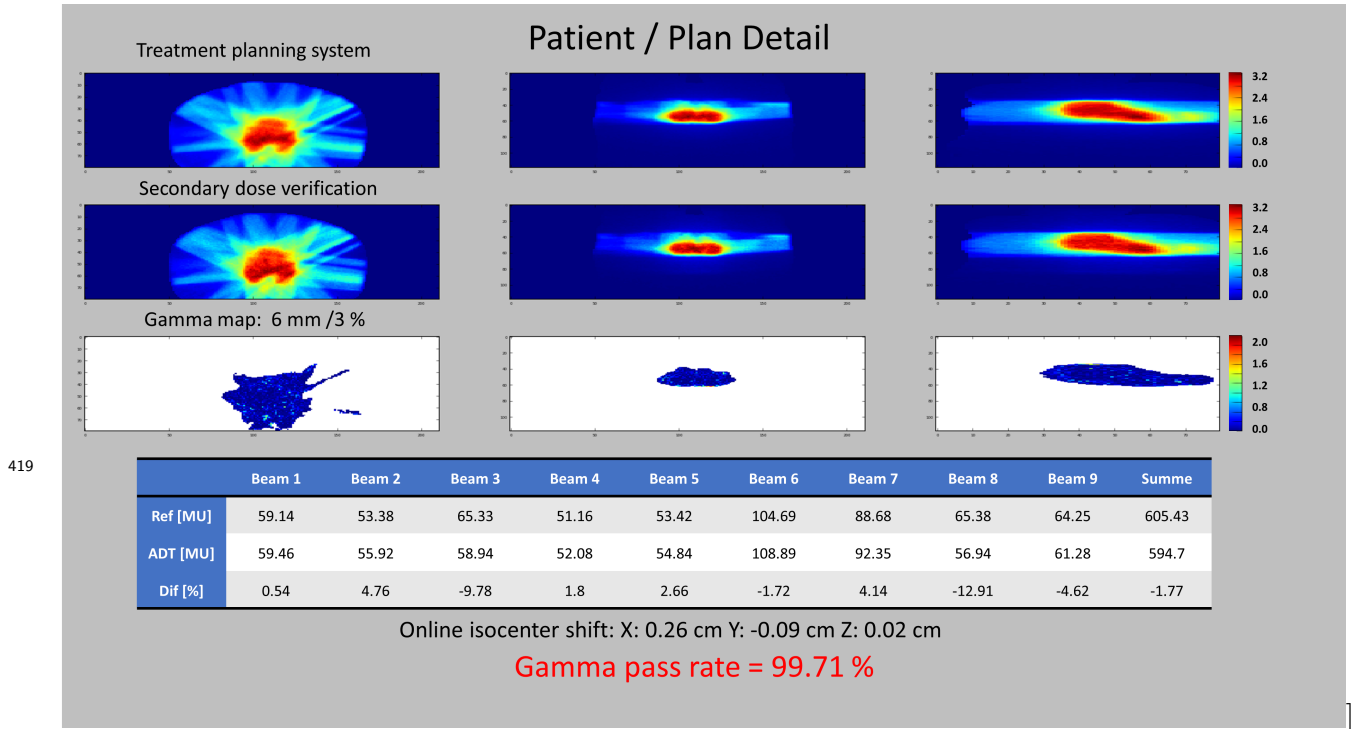


Figure S1: Graphical user interface in the online workflow. Shown is the transversal, sagittal and coronal view at the maximal dose point of the treatment planning system. The SDC and gamma map are depicted at the corresponding position. Additionally, shown are the beam specific monitor units (MU) of the reference plan (Ref), the adapted plan (ADT) and their percentage difference (Dif). Additionally, shown is the isocenter shift in the online adaptation and the gamma passing rate.

Table S1: Output factor from 0 and 270 degrees normalized to the reference field of 10 x 10 cm² at isocenter position for the measurement, secondary dose calculation (SDC) and treatment planning system (TPS). Field sizes are defined at the isocenter position in crossplane × inplane [CP × IP].

Output factor 0 °	Area [cm²]	Measure- ment	SDC [%]		TPS	
Field size [CP x IP]			Relative value	Relative deviation [%]	Relative value	Relative deviation [%]
2x2 cm ²	4	0.8096	0.80	-0.92	0.80	-1.00
3x3 cm ²	9	0.8651	0.84	-2.19	0.85	-1.17
5x5 cm ²	25	0.9201	0.89	-2.60	0.92	-0.24
10x10 cm ²	100	1	1.00	0.00	1.00	0.00
15x15 cm ²	225	1.0519	1.04	-1.06	1.05	-0.42
22x22 cm ²	484	1.1058	1.07	-3.64	1.10	-0.72
40x22 cm ²	880	1.1453	1.08	-6.36	1.13	-1.39
Output factor 270 °	Area [cm²]	Measure- ment	SDC [%]		TPS	
Field size [CP x IP]			Relative value	Relative deviation [%]	Relative value	Relative deviation [%]
2x2 cm ²	4	0.786	0.80	1.57	0.77	-1.97
3x3 cm ²	9	0.85	0.85	0.13	0.85	-0.44
5x5 cm ²	25	0.912	0.91	0.29	0.91	-0.47
10x10 cm ²	100	1	1.00	0.00	1.00	0.00
16x16 cm ²	256	1.075	1.06	-1.56	1.07	-0.13

421

422