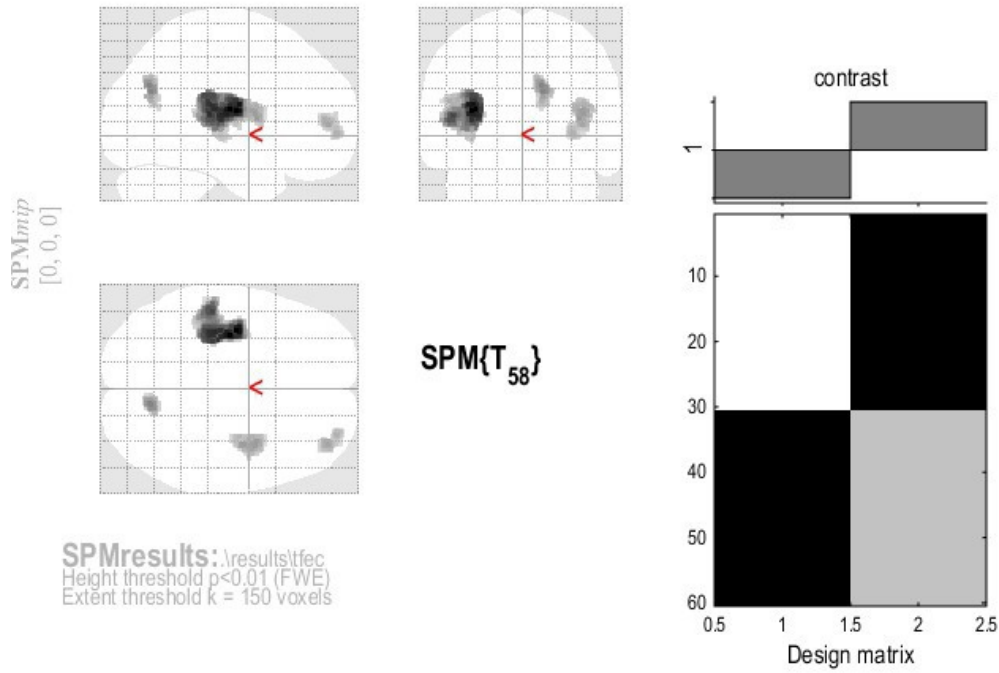


Supplementary Figure 1

Nonparametric test: a



SPMresults:\results\fec
Height threshold $p < 0.01$ (FWE)
Extent threshold $k = 150$ voxels

Statistics: *nonparametric p-values adjusted for search volume*

k_E	peak-level			T	p_{uncorr}	mm mm mm		
	$p_{\text{FWE-corr}}$	$q_{\text{FDR-corr}}$						
1665	0.000	0.002	7.20	0.000	-36	-11	14	
	0.000	0.002	6.78	0.000	-32	-20	11	
	0.000	0.002	6.74	0.000	-35	-26	15	
179	0.001	0.002	5.93	0.000	12	-68	26	
	0.007	0.002	5.22	0.000	11	-63	17	
270	0.001	0.002	5.72	0.000	38	-6	14	
	0.002	0.002	5.70	0.000	36	3	9	
	0.003	0.002	5.51	0.000	39	3	17	
235	0.002	0.002	5.63	0.000	38	50	5	
	0.003	0.002	5.54	0.000	32	57	0	
	0.007	0.002	5.22	0.000	36	56	12	

table shows 3 local maxima more than 8.0mm apart

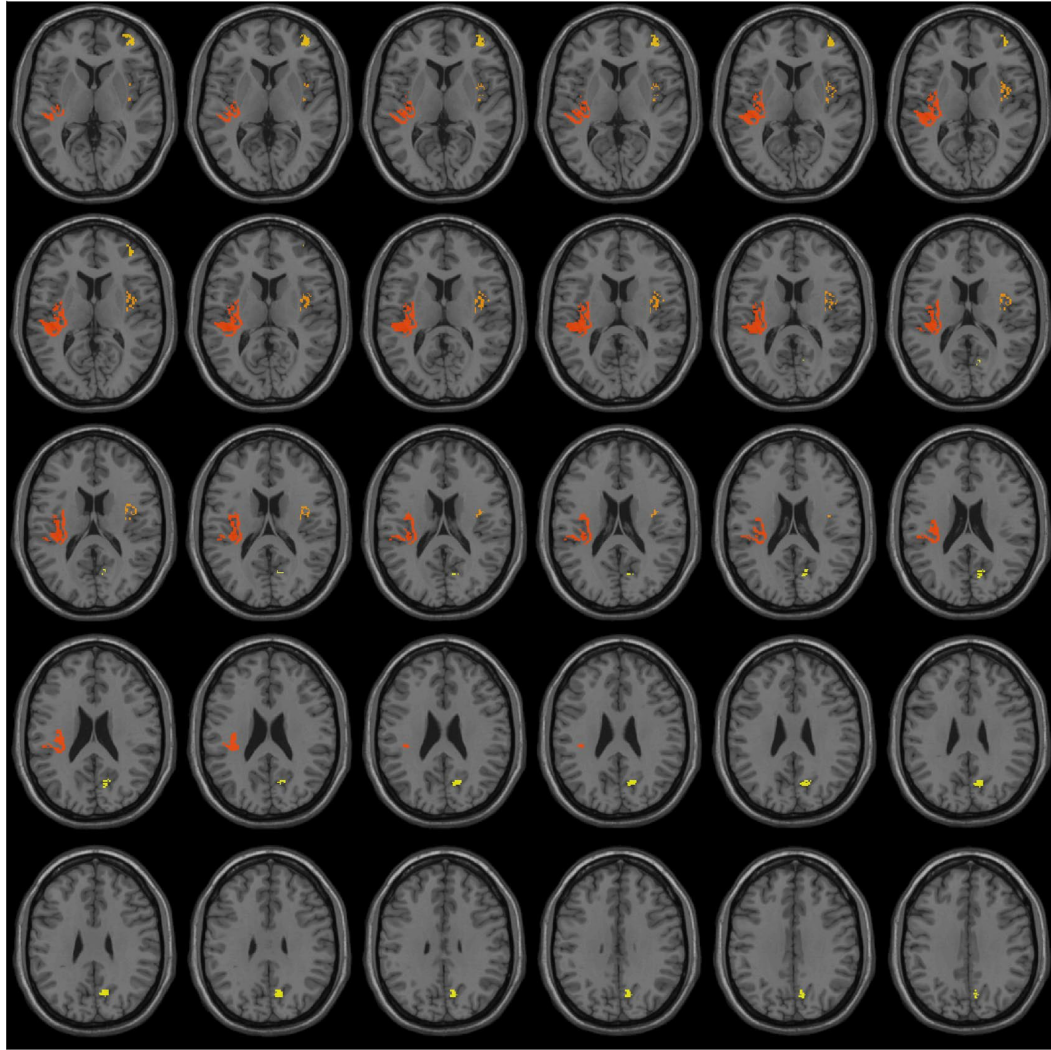
Degrees of freedom = [1.0, 58.0]

FWHM = 11.8 12.7 12.7 mm mm mm; 7.9 8.5 8.5 (voxels)

Volume: 1482600 = 439289 voxels = 641.9 resels

Voxel size: 1.5 1.5 1.5 mm mm mm; (resel = 565.84 voxels)

Permutations = 5000



Supplementary Figure 2