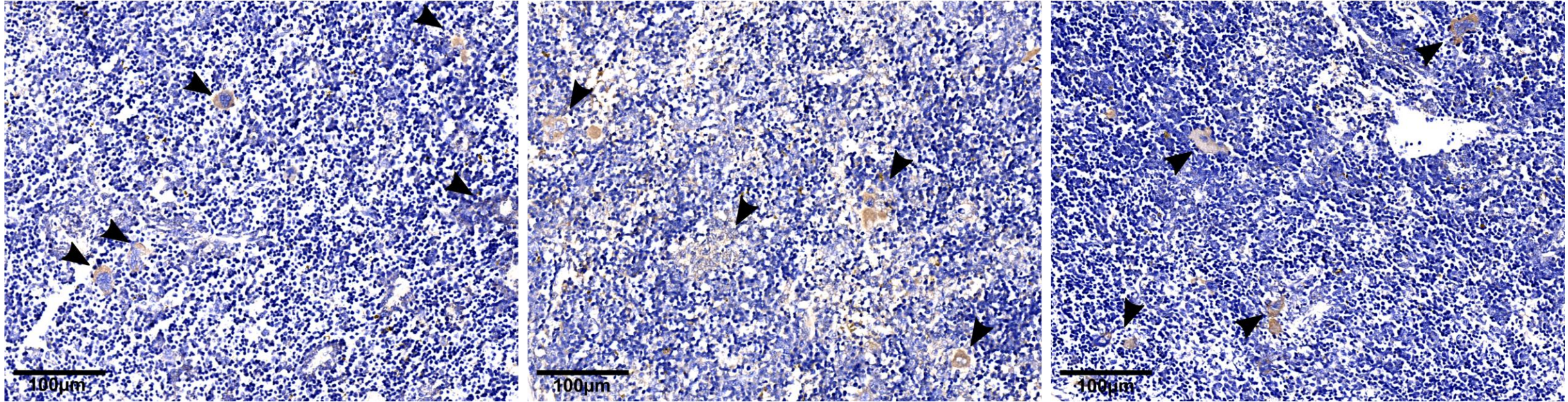


Supplementary data

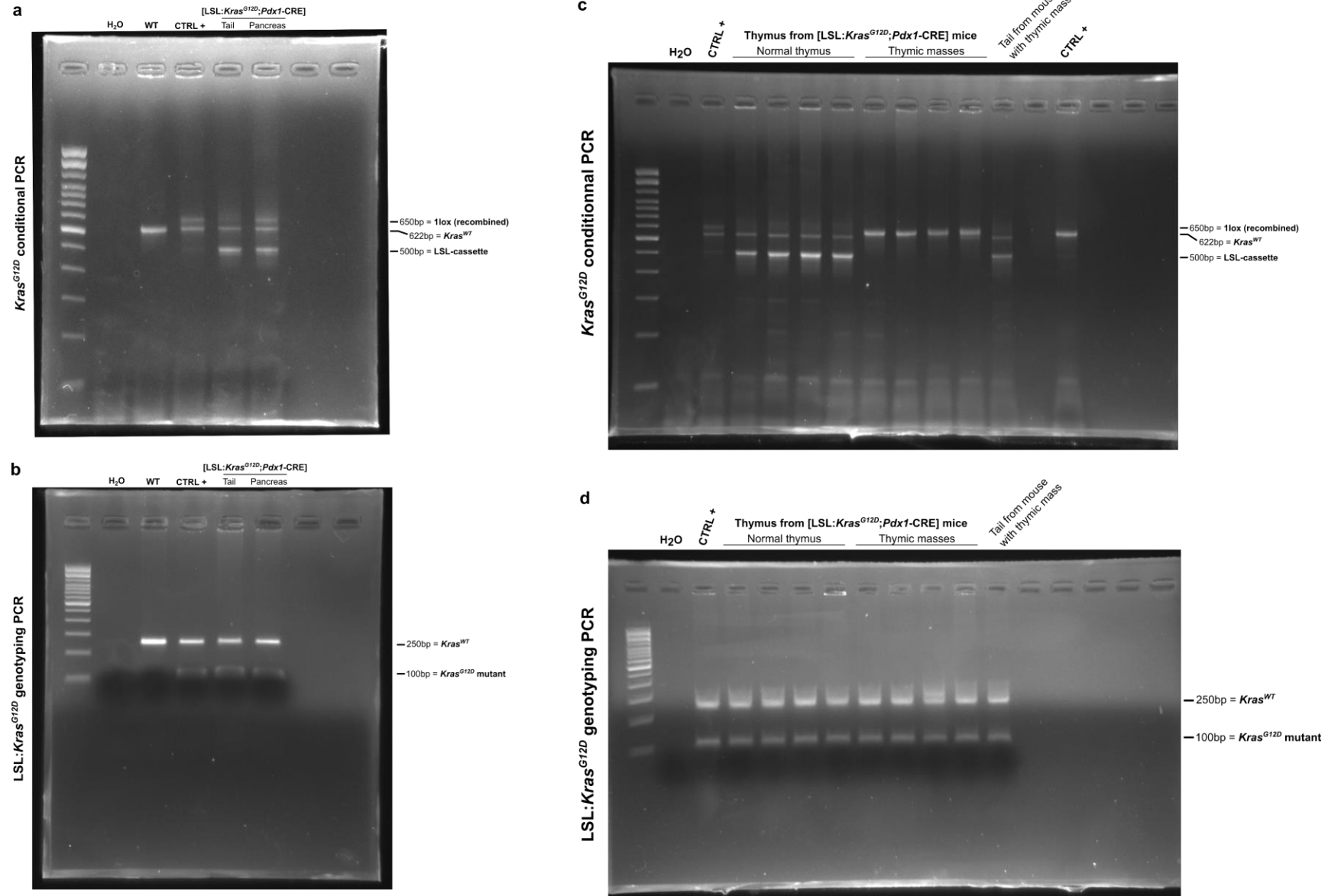
Development of thymic tumor in [*LSL:Kras^{G12D}; Pdx1-CRE*] mice, an adverse effect associated with accelerated pancreatic carcinogenesis.

Kras^{G12D}

With thymic mass - Spleen



Supplementary Figure S1: Presence of Kras^{G12D} positive cells in spleen adjacent to pancreas. Representative images of spleen adjacent to pancreas, labelled through anti-KRAS^{G12D} immunohistochemistry. Kras^{G12D} positive cells evoking invasion from pancreas to spleen are pointed by arrowheads. Scale bars are indicated on the pictures.



Supplementary Figure S2: Uncropped pictures of the gels presented in Figure 1b Top (a), Figure 1b Bottom (b), Figure 3b Top (c) and Figure 3b Bottom (d).