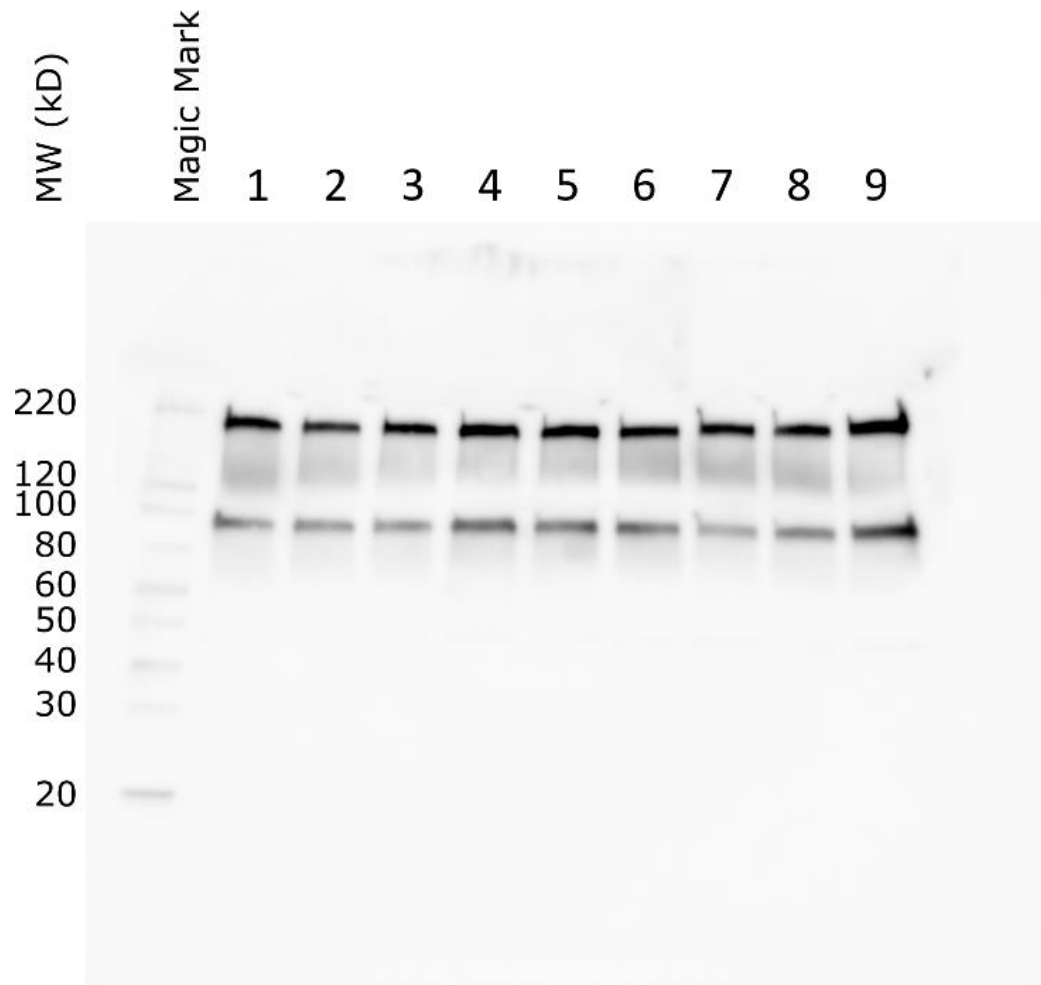


PONE-D-20-39399

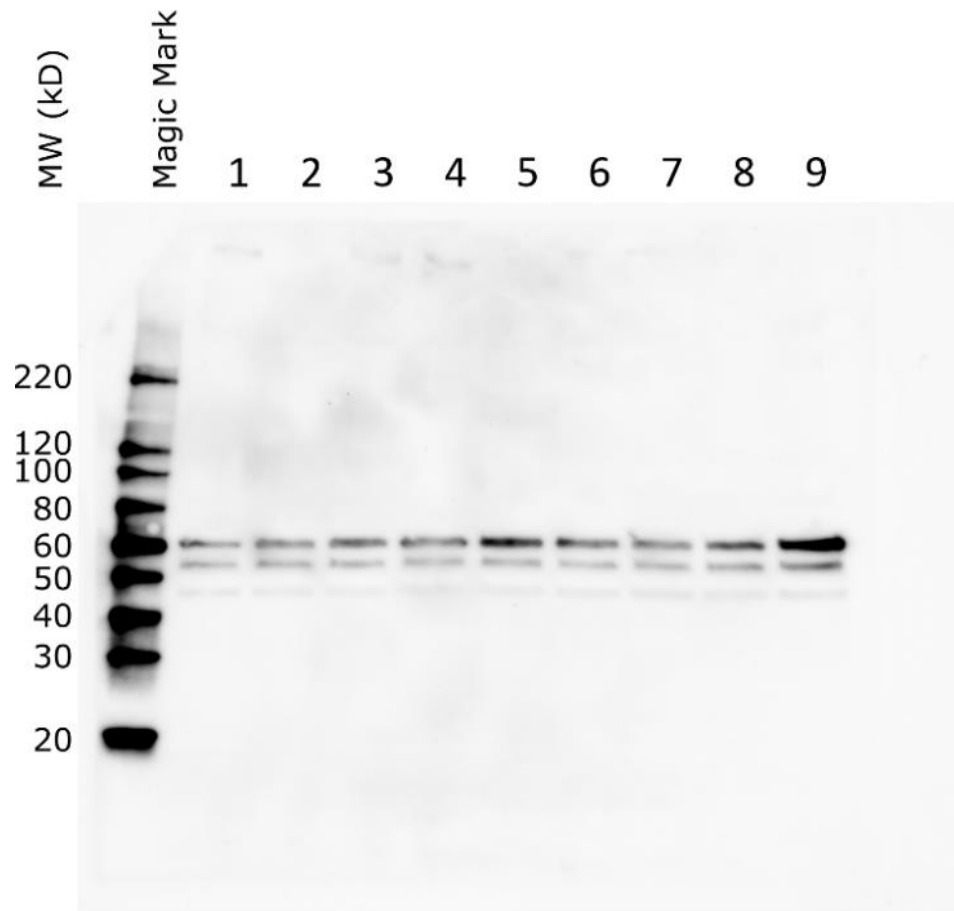
Supplemental Materials - Original raw images for Western blots

1. Raw images for Figure 7A, top panel.



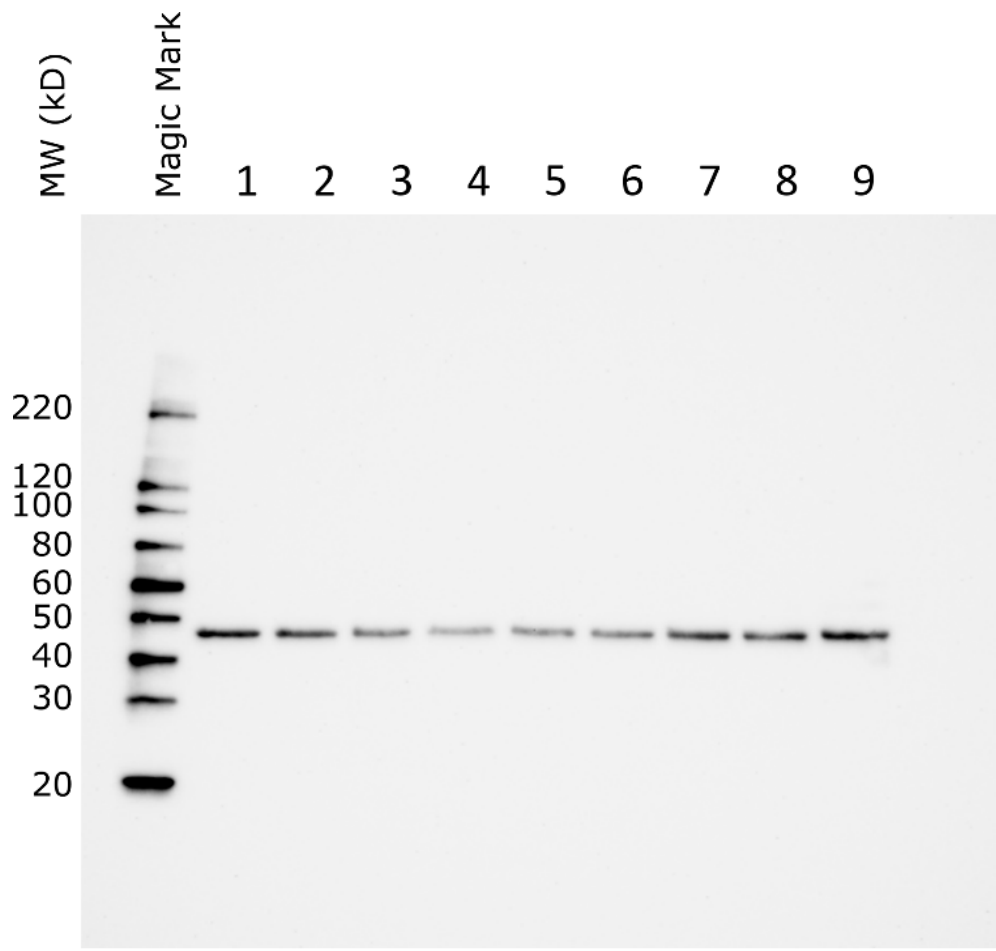
lanes 1-3: control  
lanes 4-6: PBT434  
lanes 7-9: PBT434-met

Western blot of transferrin receptor ( $\alpha$ -TfR, R&D Systems;  
monomer: 95kD, homodimer: 180-200kD)



lanes 1-3: control  
lanes 4-6: PBT434  
lanes 7-9: PBT434-met

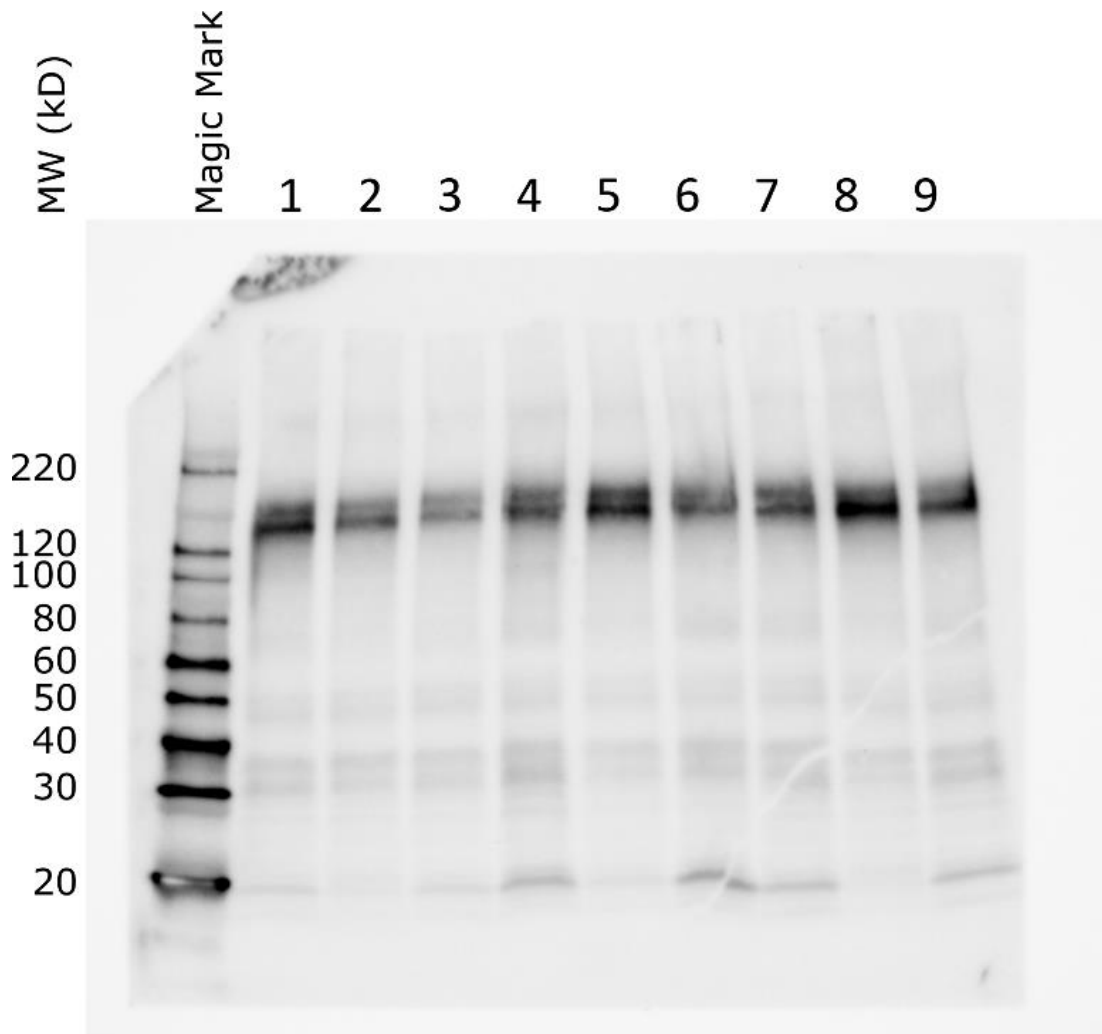
Western blot of ferroportin ( $\alpha$ -Fpn, Novus, 55-60kD)



lanes 1-3: control  
lanes 4-6: PBT434  
lanes 7-9: PBT434-met

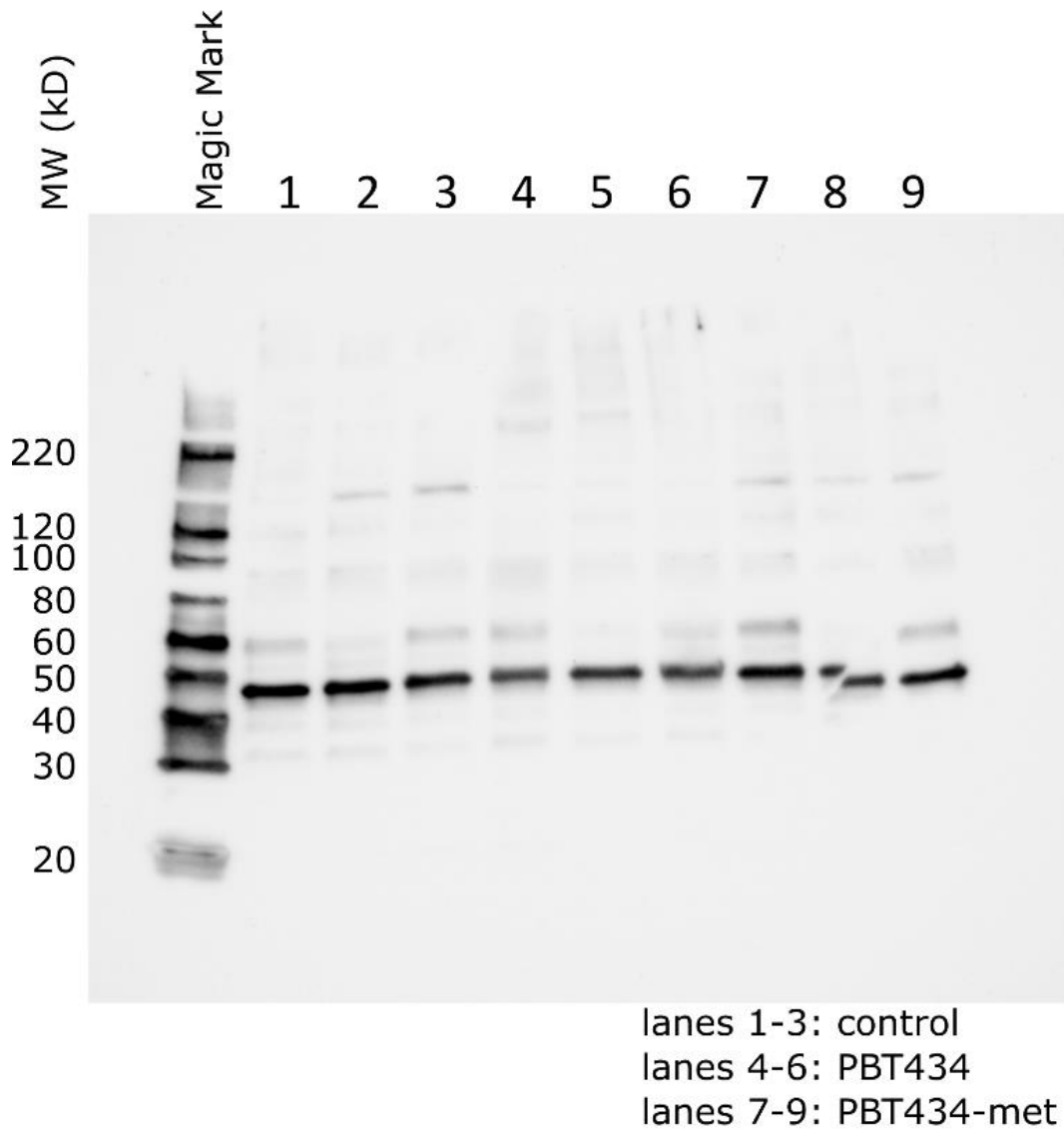
Western blot of beta-actin ( $\alpha$ - $\beta$ actin, Cell Signaling, 45kD)

2. Raw images for Figure 7A, bottom panel.



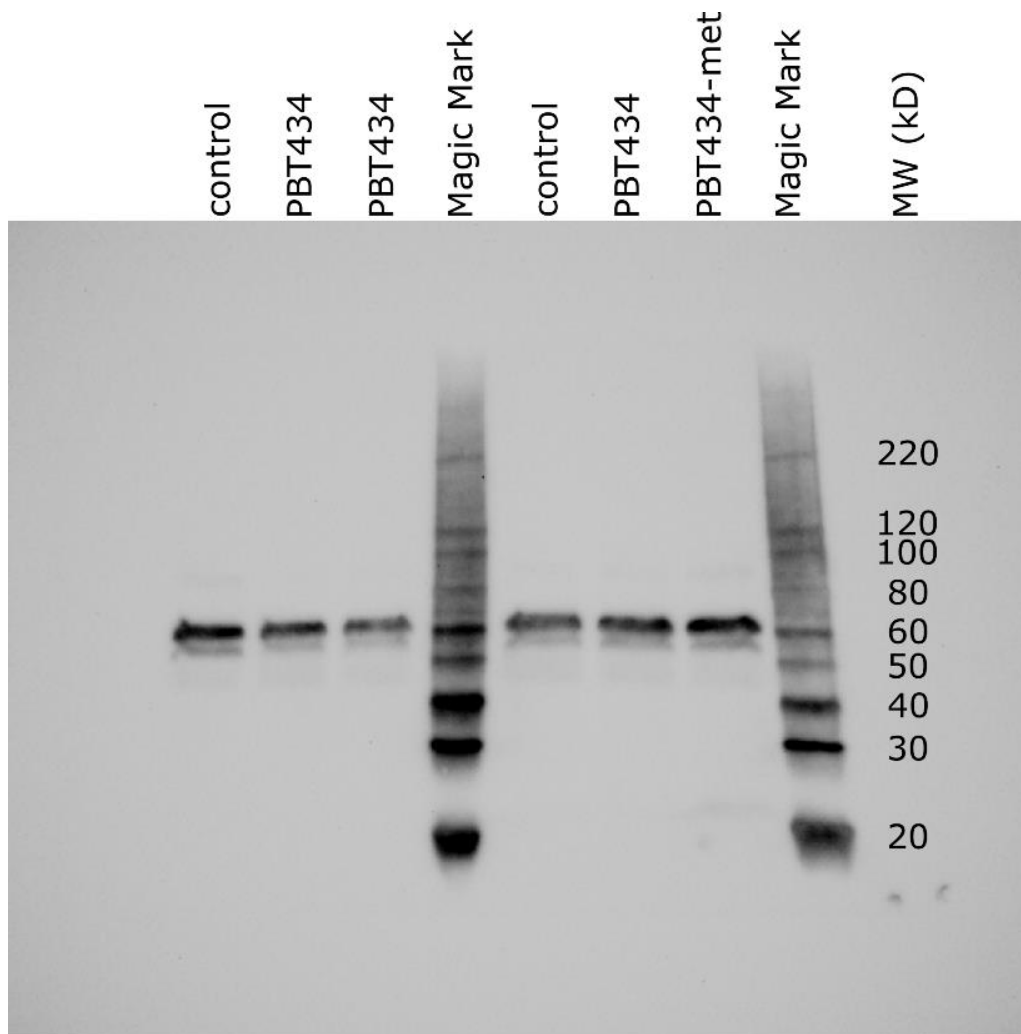
lanes 1-3: control  
lanes 4-6: PBT434  
lanes 7-9: PBT434-met

Western blot of ceruloplasmin ( $\alpha$ -Cp, Bethyl, 130-150 kD)

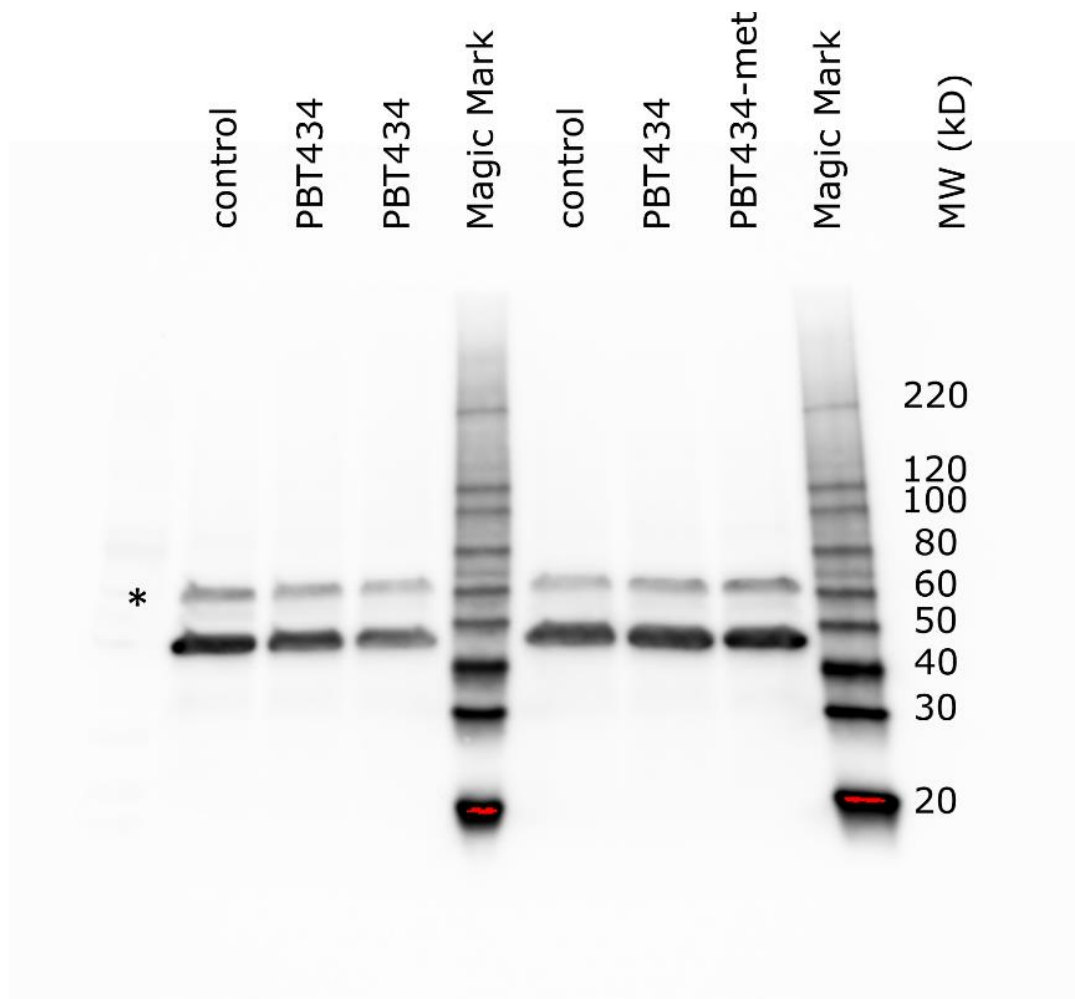


Western blot of beta-actin ( $\alpha$ -Bactin, Cell Signaling, 45 kD)

3. Additional raw images for western blots used in quantification in Figure 7.



Western blot of ferroportin ( $\alpha$ -Fpn, Novus, 55-60kD)



Western blot of beta-actin ( $\alpha$ - $\beta$ actin, Cell Signaling, 45kD)

\* indicates non-specific band leftover from  $\alpha$ -Fpn