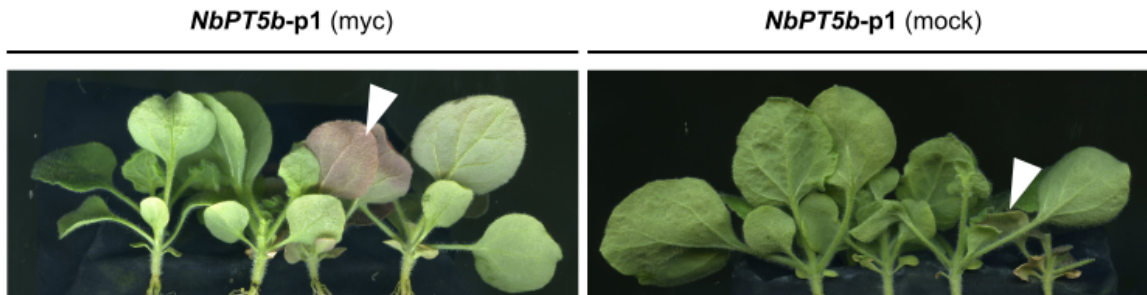


**S8 Fig.** Betanin detection by HPLC performed on T1 pigmented leaf tissue of *NbPT5b*-p1 expressing *Nicotiana benthamiana* lines. (a) Some T1 plants show pigmentation in the leaves at varying degrees. (b) Liquid chromatography of pigmented leaves and controls. Pigmented leaves of *NbPT5b*-p1 expressing plants both in inoculated (myc) and non-inoculated (mock) conditions showed a peak at the expected retention time for betanin (red dotted line). Betanin standard is a commercially available *Beta vulgaris* extract and displays two peaks corresponding to the two betanin isomers commonly present in beet extracts. *NbPT5b::GUS* leaf tissue of same age T1 plants was used as negative control. Data underlying this figure can be found in S3 Data.

(a)



(b)

