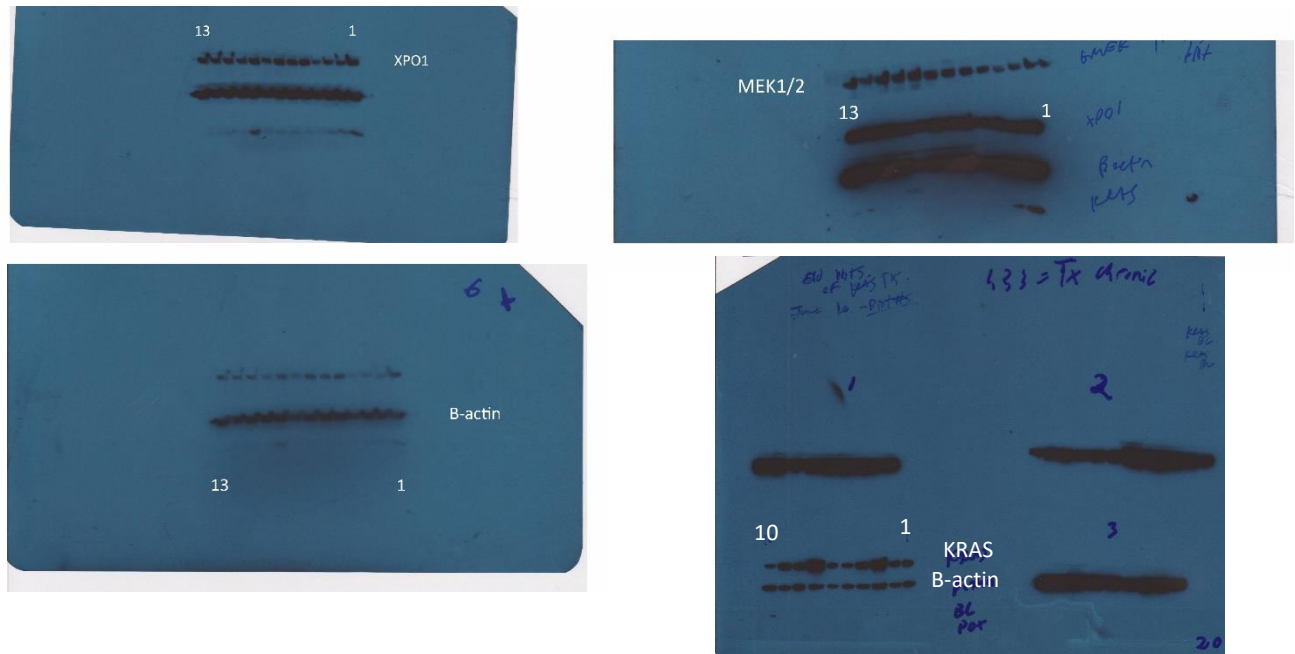
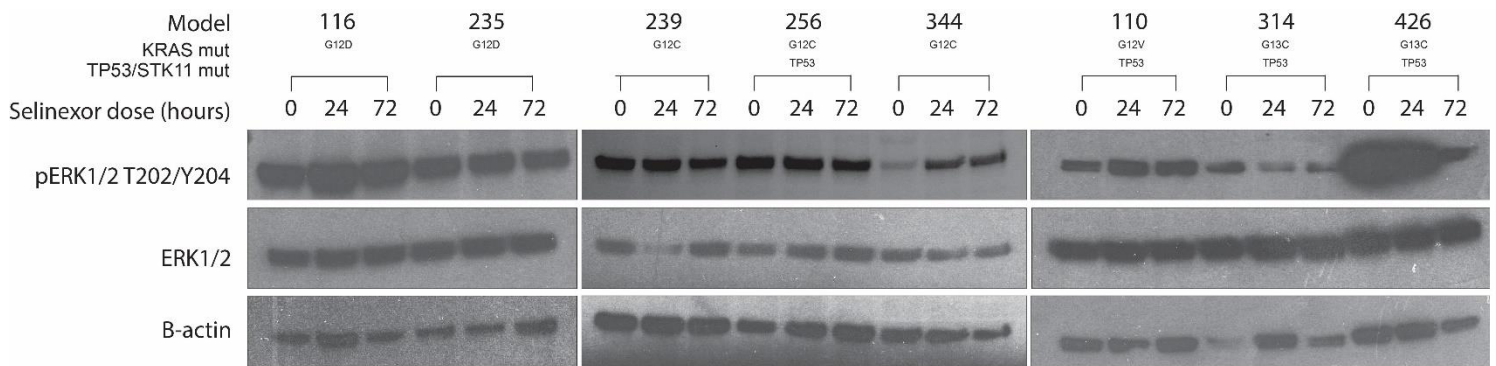


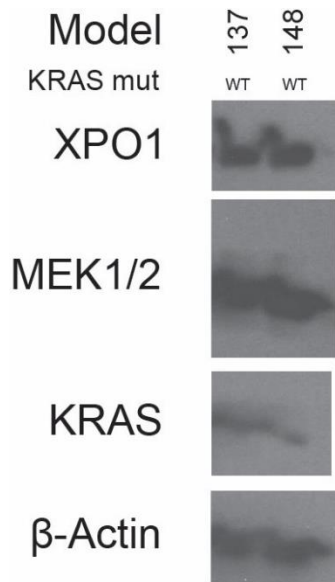
Supplementary Figures



Supplementary Figure S1. Raw western blots. Raw scanned blots used to create Figure 1B. The numbers refer to the samples loaded.



Supplementary Figure S2. Acute Selinexor treatment effects. 8 of 10 *KRAS*-mutant PDX were treated with one dose of Selinexor and tumors harvested at 0, 24, 72 hours. pERK1/2, ERK1/2 were probed, and β -Actin was used as a loading control.



Supplementary Figure S3. Baseline expression of *KRAS*^{WT} models. Tumors were harvested at baseline and probed for XPO1, MEK1/2, and KRAS. β -Actin was used as a loading control.