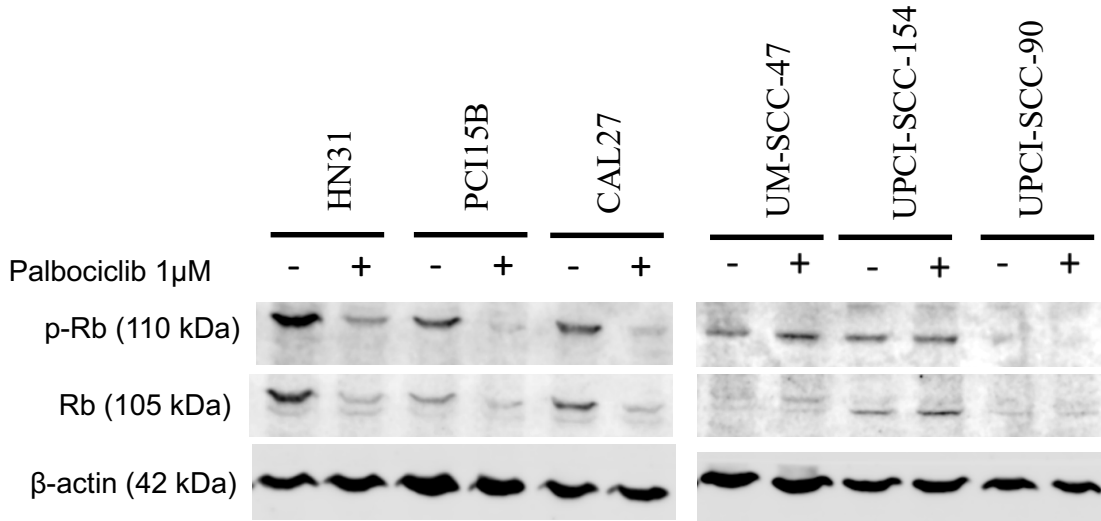


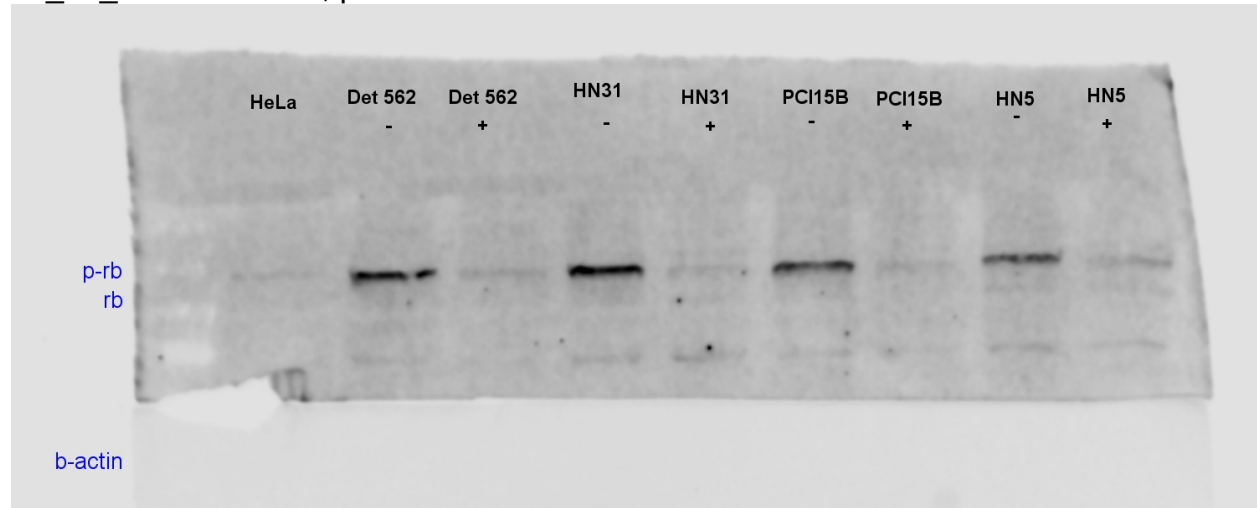
Supplemental Figure 1. Phosphorylated-retinoblastoma protein (p-Rb) and retinoblastoma protein (Rb) expression after incubation with palbociclib among the panel of head and neck squamous cell carcinoma (HNSCC) lines. Representative western blot showing protein expression for p-Rb, Rb, and β -actin (**A**). (+) and (-) designates treatment condition with or without 1 μ M palbociclib. Raw western blots, with protein bands labeled accordingly, are shown below (**B**).

Part A:

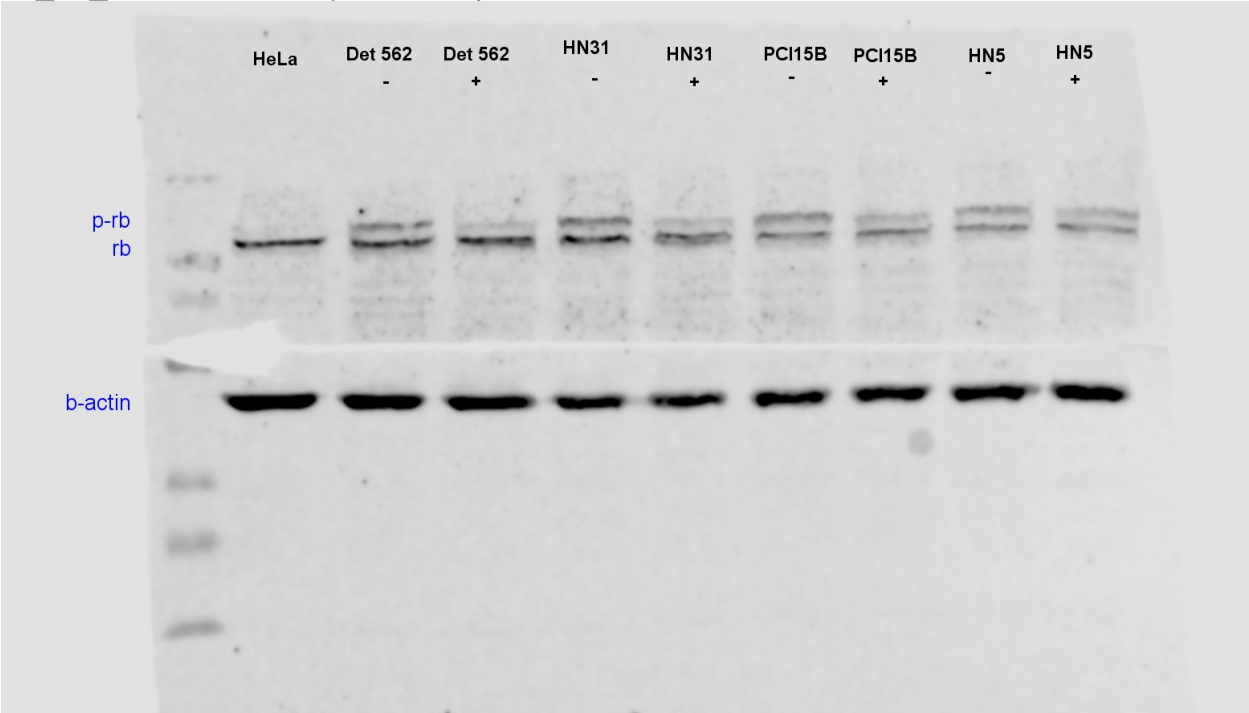


Part B:

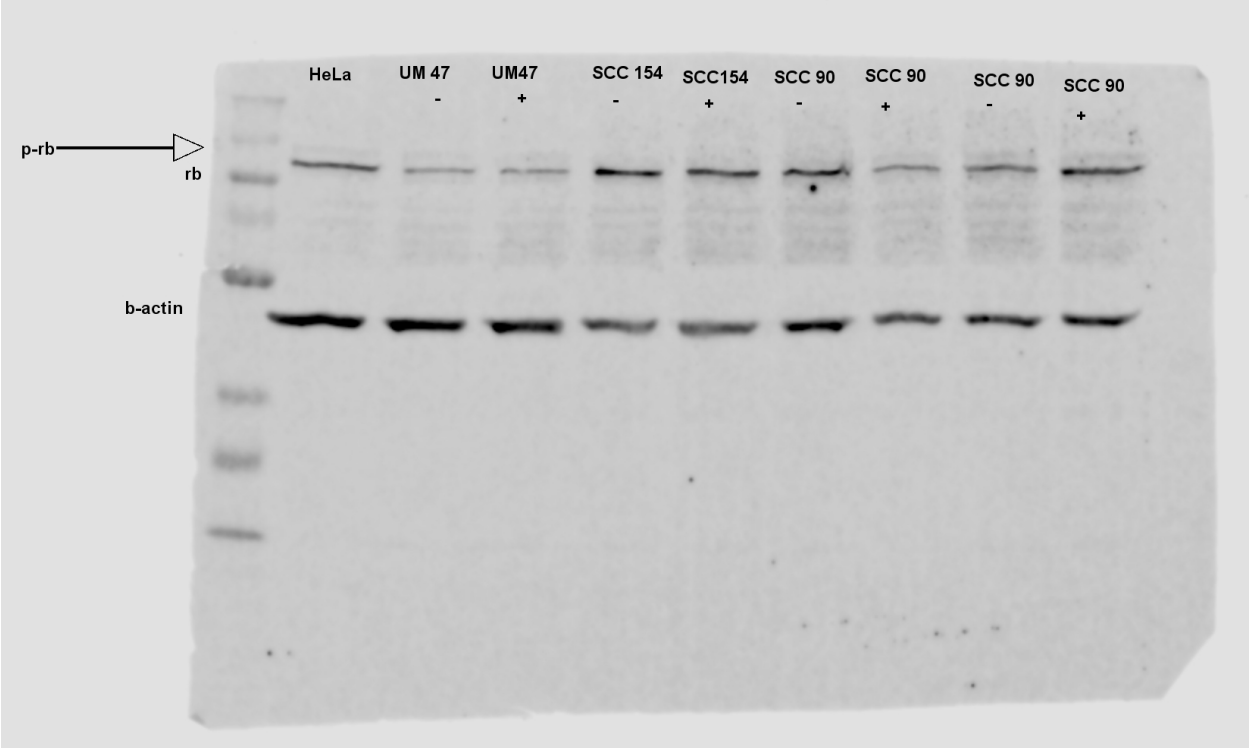
18_02_12: HPV- lines, p-Rb



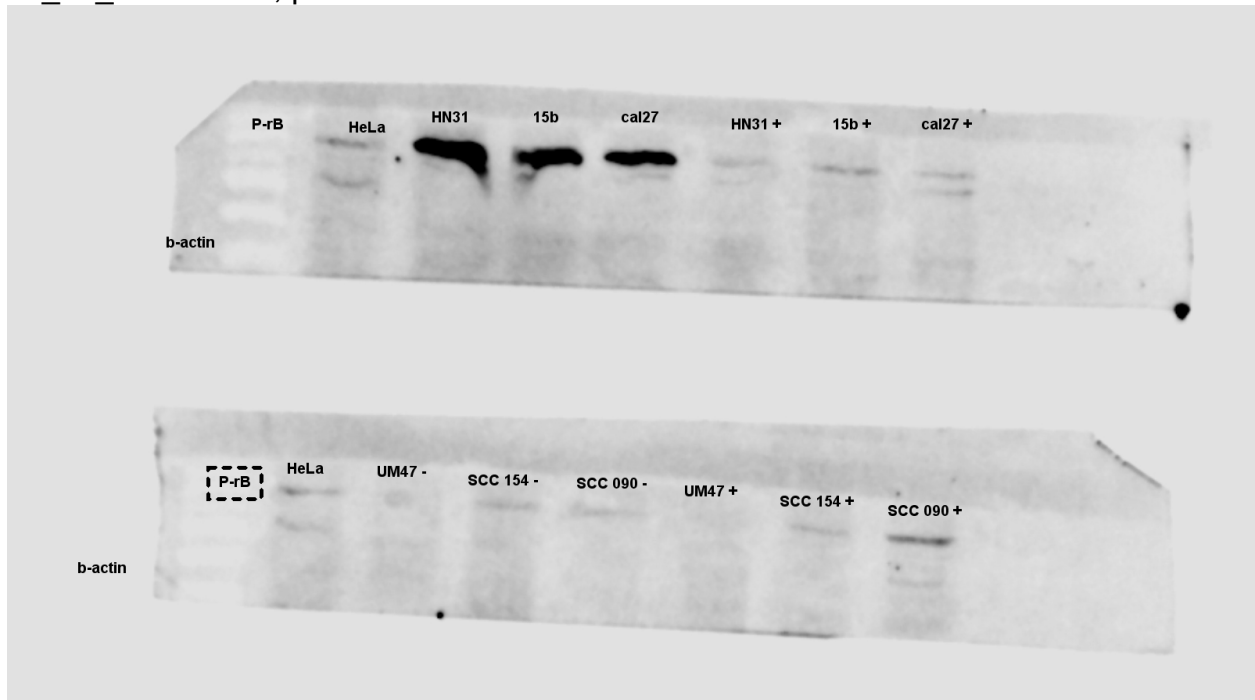
18_02_12: HPV- lines, p-Rb, Rb, β -actin



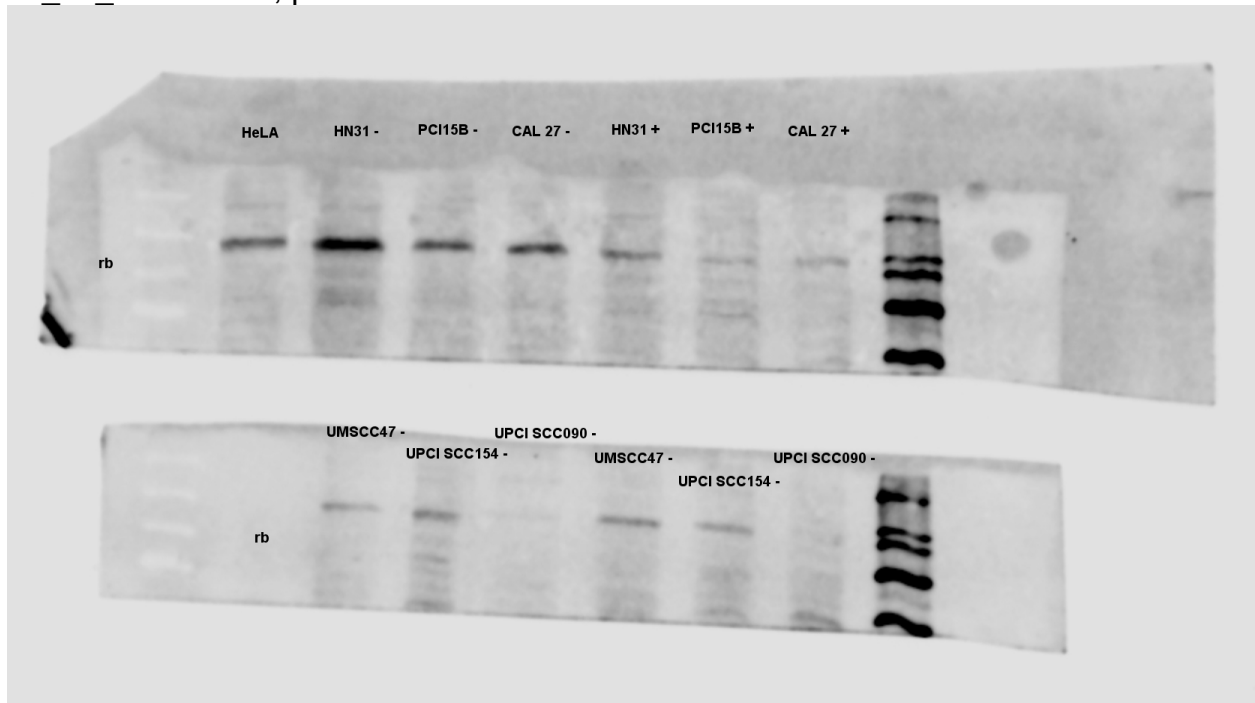
18_02_12: HPV+ lines, p-Rb, Rb, β -actin



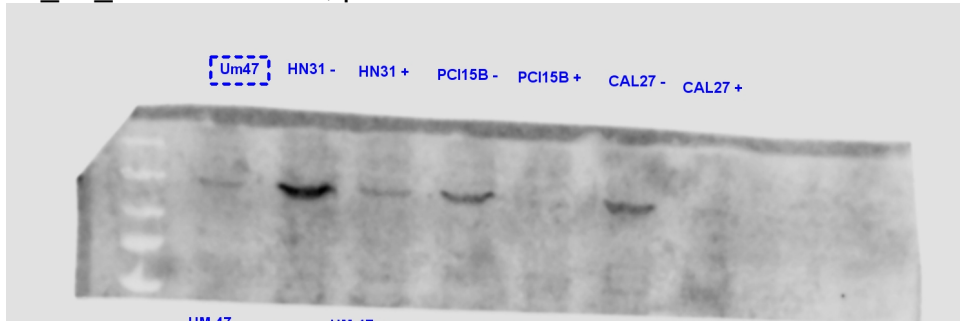
20_06_11: all lines, p-Rb



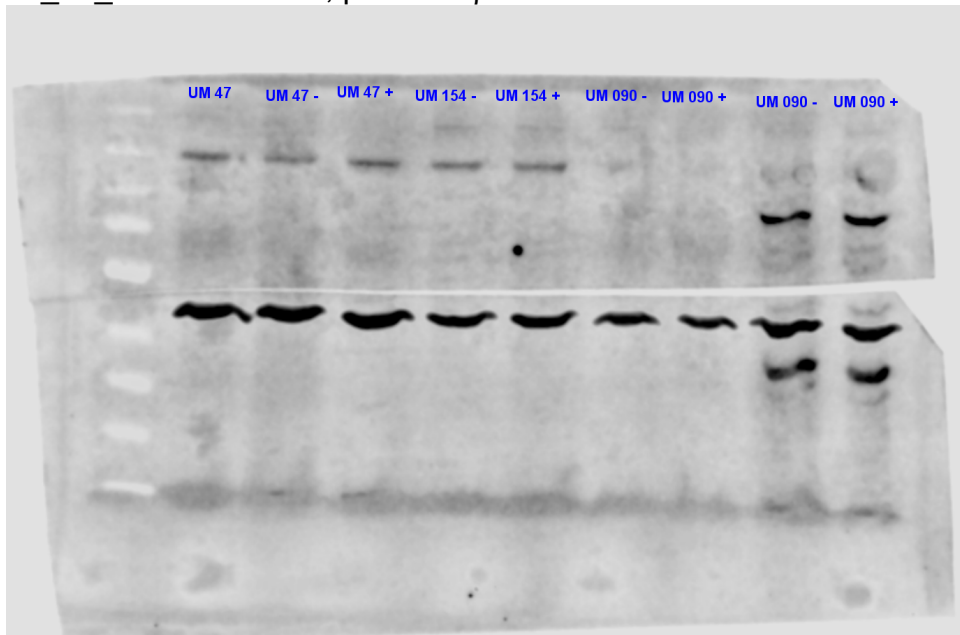
20_06_24: all lines, p-Rb



20_06_30: HPV+ lines, p-Rb



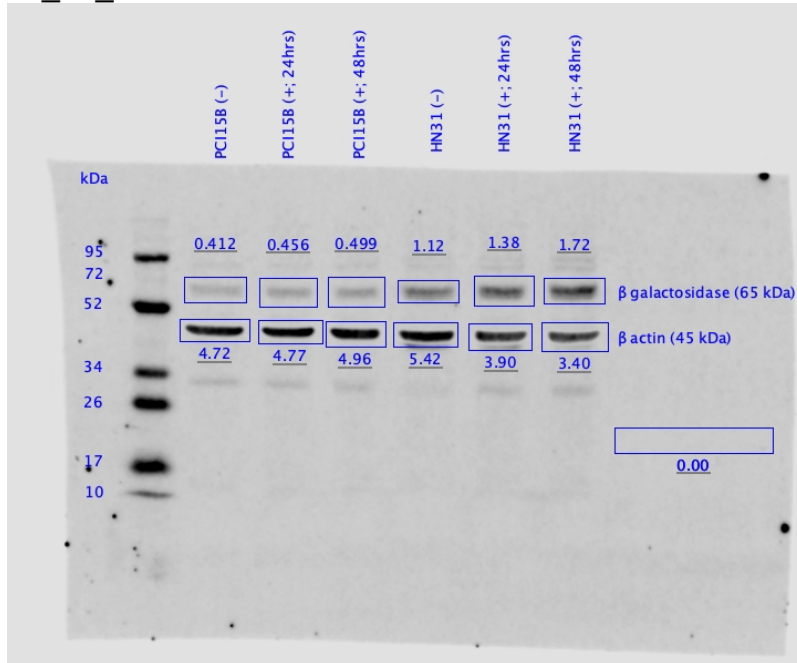
20_06_30: HPV+ lines, pRb and β -actin



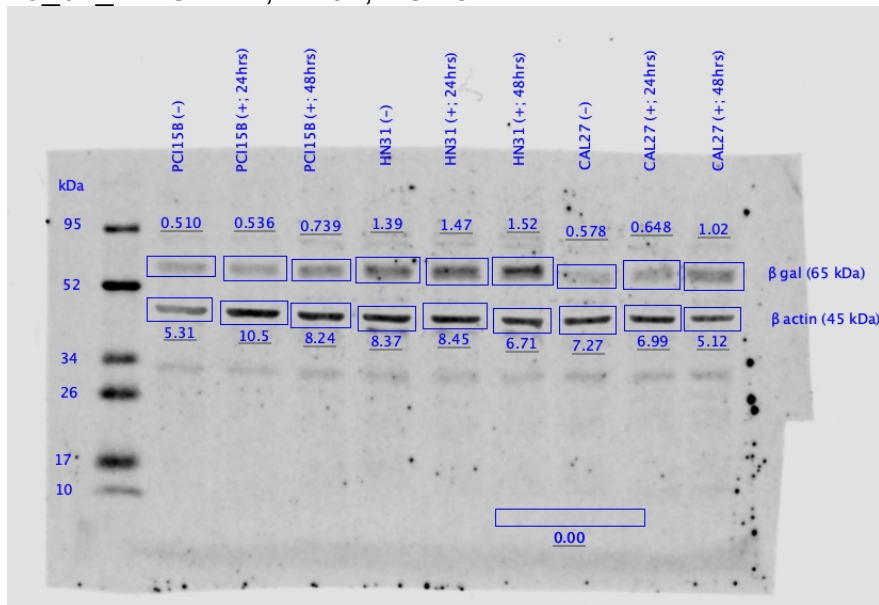
Supplemental Figure 2. β -galactosidase, BCL-xL, BCL-2, and BCL-w protein expression after incubation with palbociclib among the panel of head and neck squamous cell carcinoma (HNSCC) lines. Raw western blots, with protein bands labeled accordingly, that were used in quantification process for Figure 3 are shown below. Blots organized by protein that was probed against: β -galactosidase (**A**), BCL-xL (**B**), BCL-2 (**C**), and BCL-w (**D**).

Part A: β -galactosidase

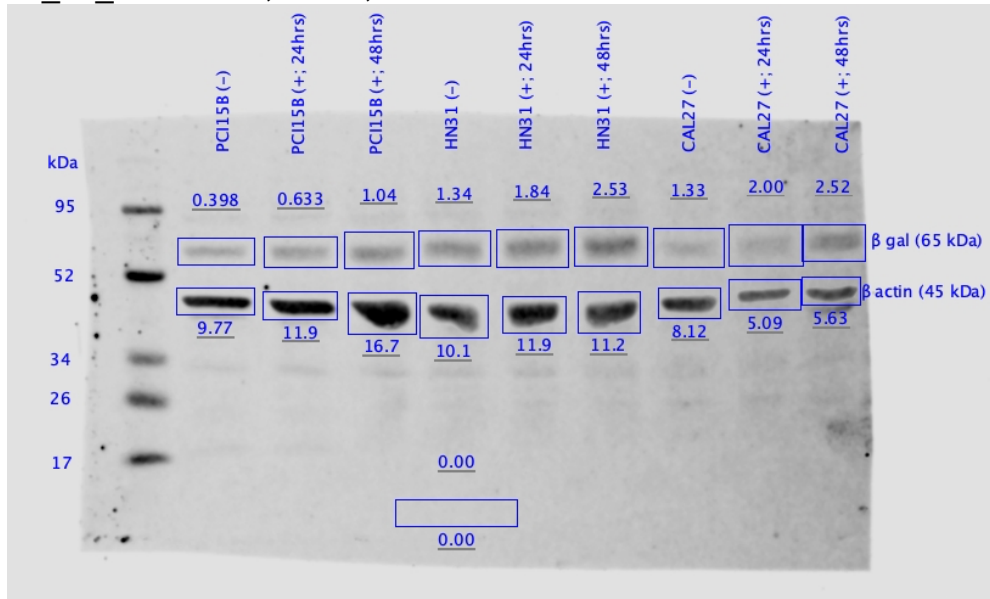
19_02_19: HN31 + PCI15B



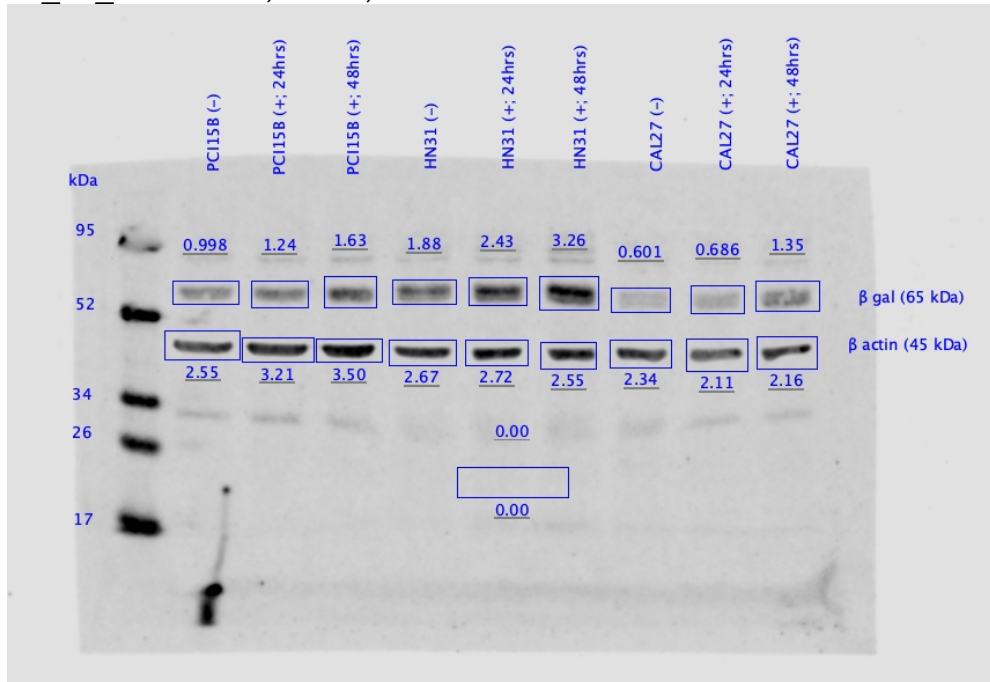
19_02_21: CAL27, HN31, PCI15B



19_02_25: CAL27, HN31, PCI15B

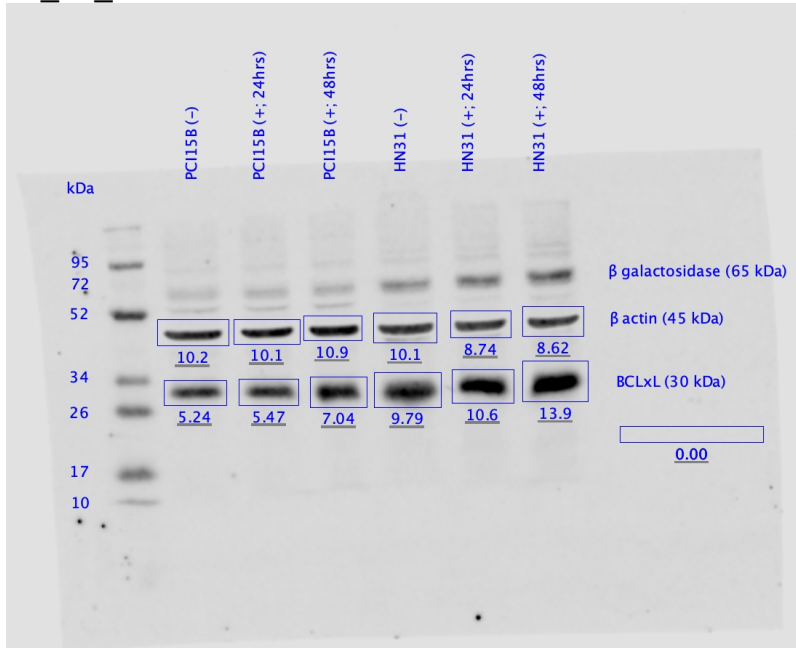


19_03_08: CAL27, HN31, PCI15B

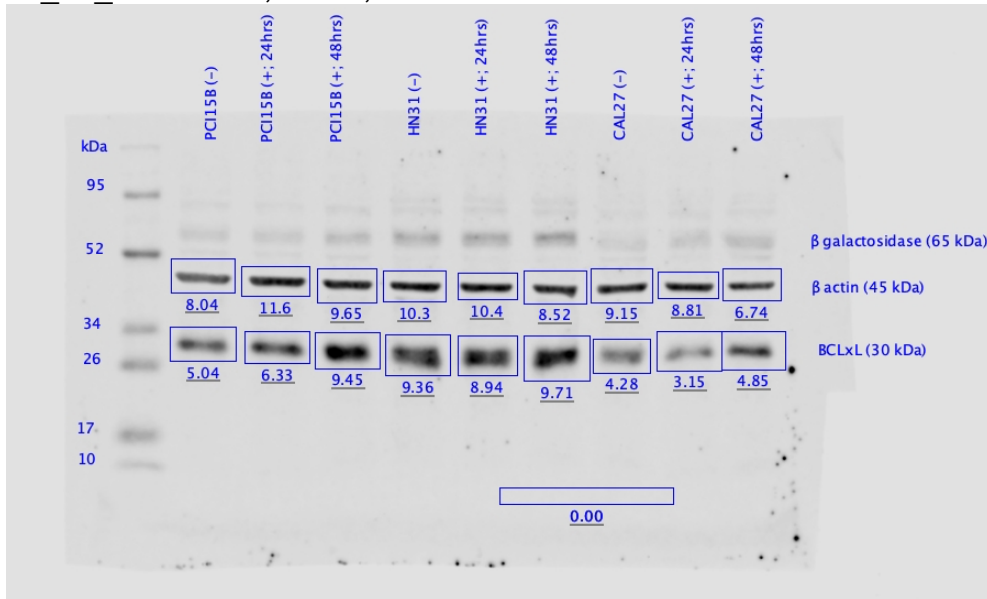


Part B: BCL-xL

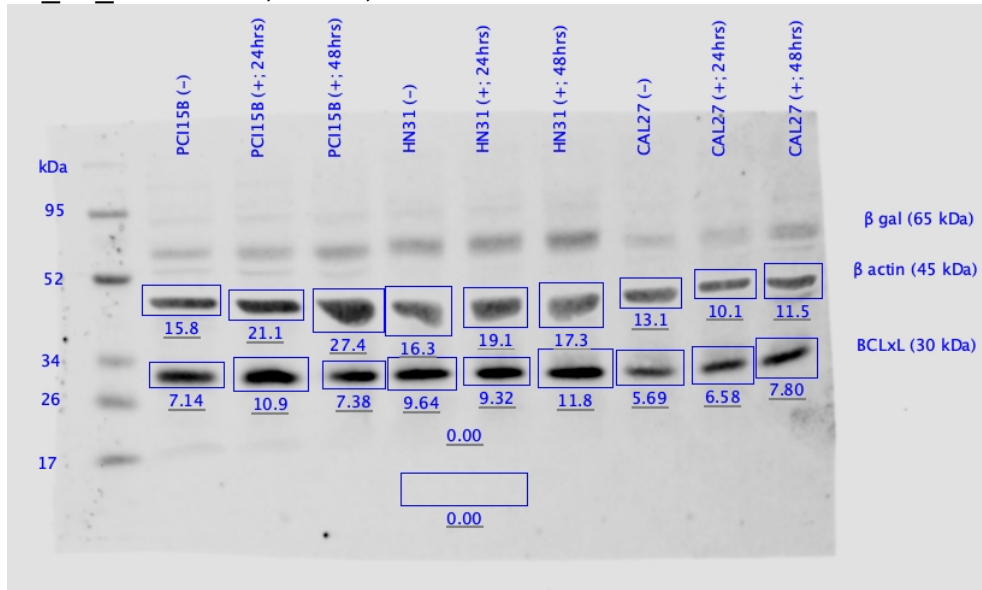
19_02_19: HN31 + PCI15B



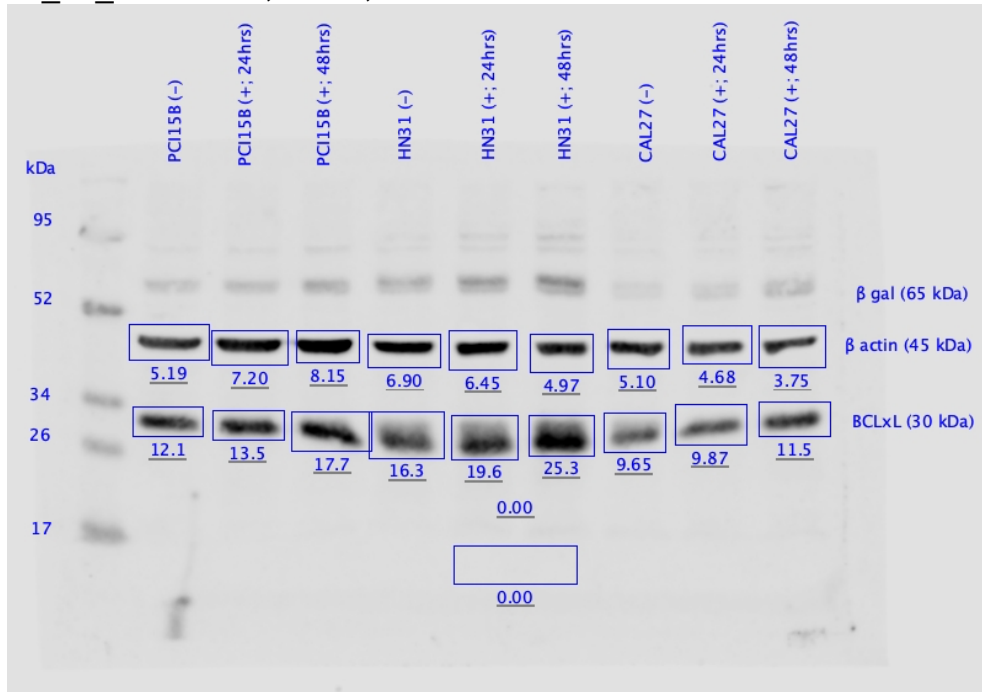
19_02_21: CAL27, HN31, PCI15B



19_02_25: CAL27, HN31, PCI15B

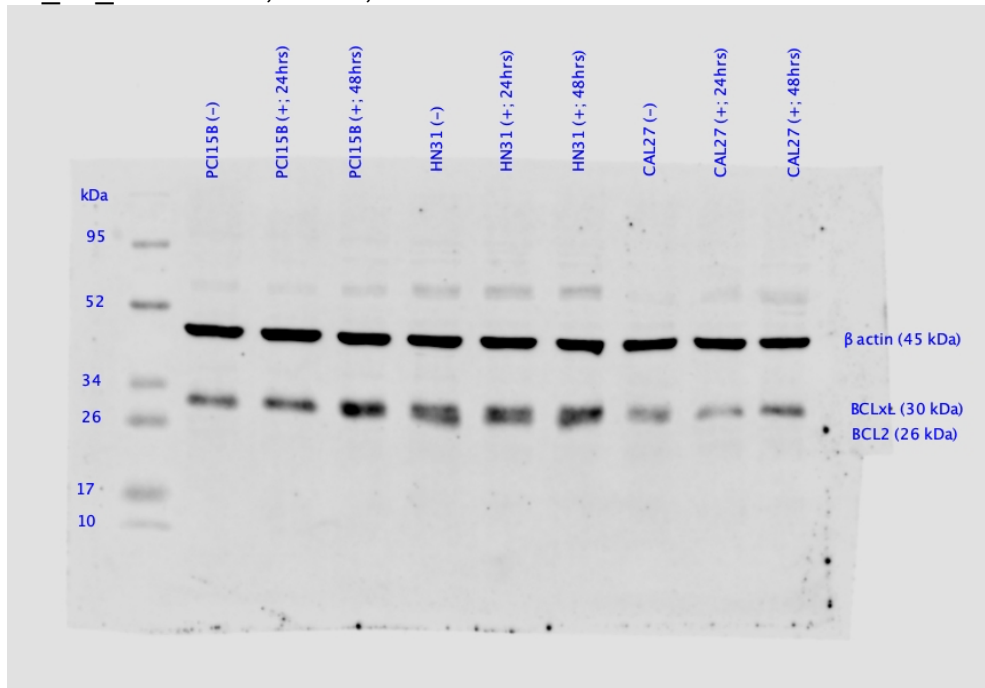


19_03_08: CAL27, HN31, PCI15B

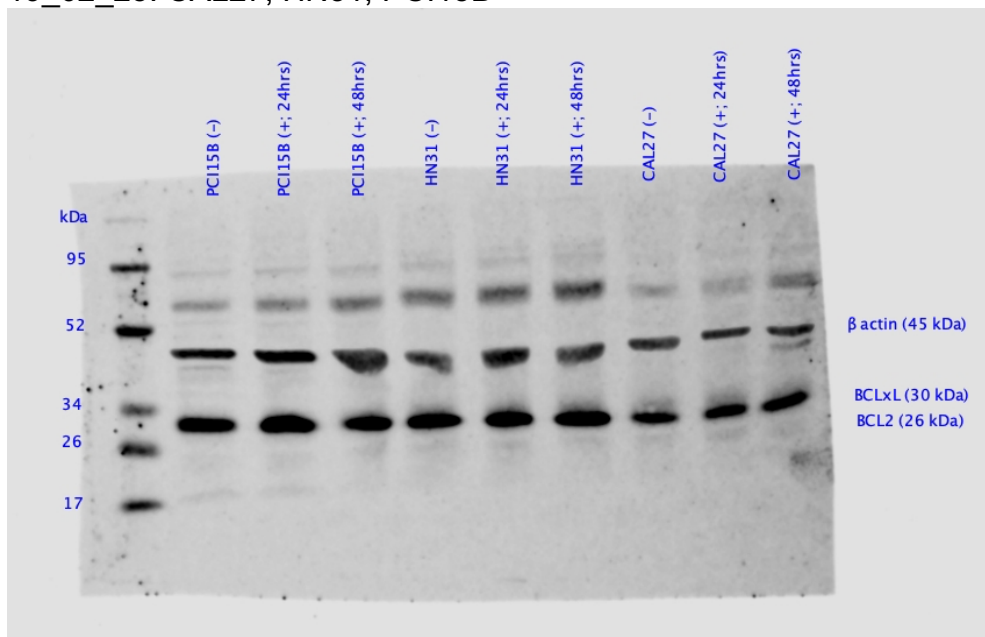


Part C: BCL-2

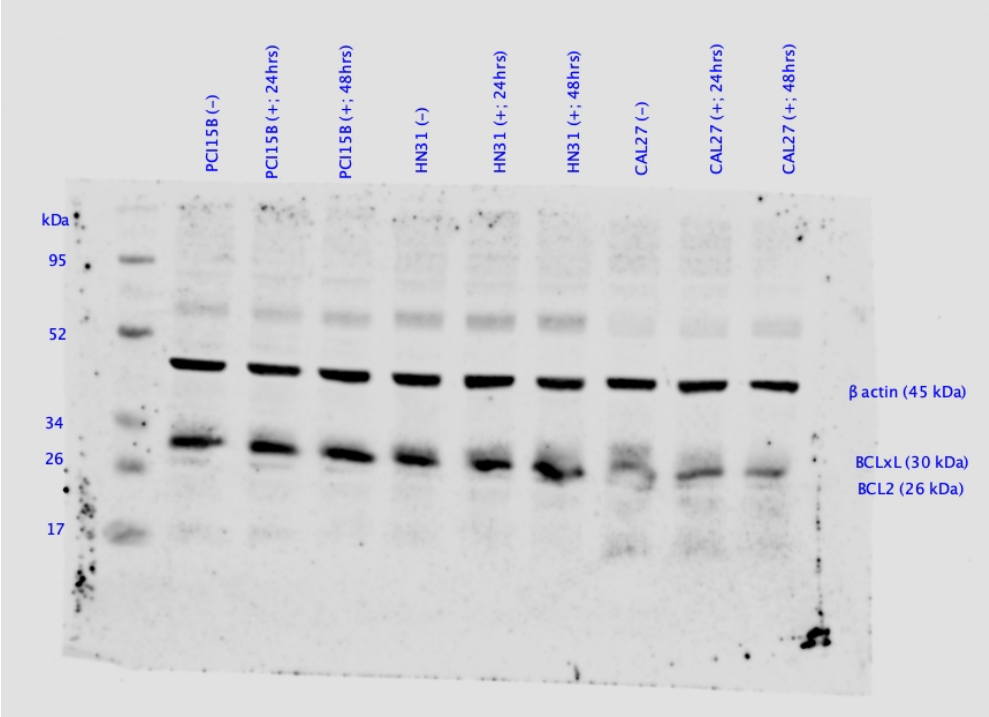
19_02_21: CAL27, HN31, PCI15B



19_02_25: CAL27, HN31, PCI15B

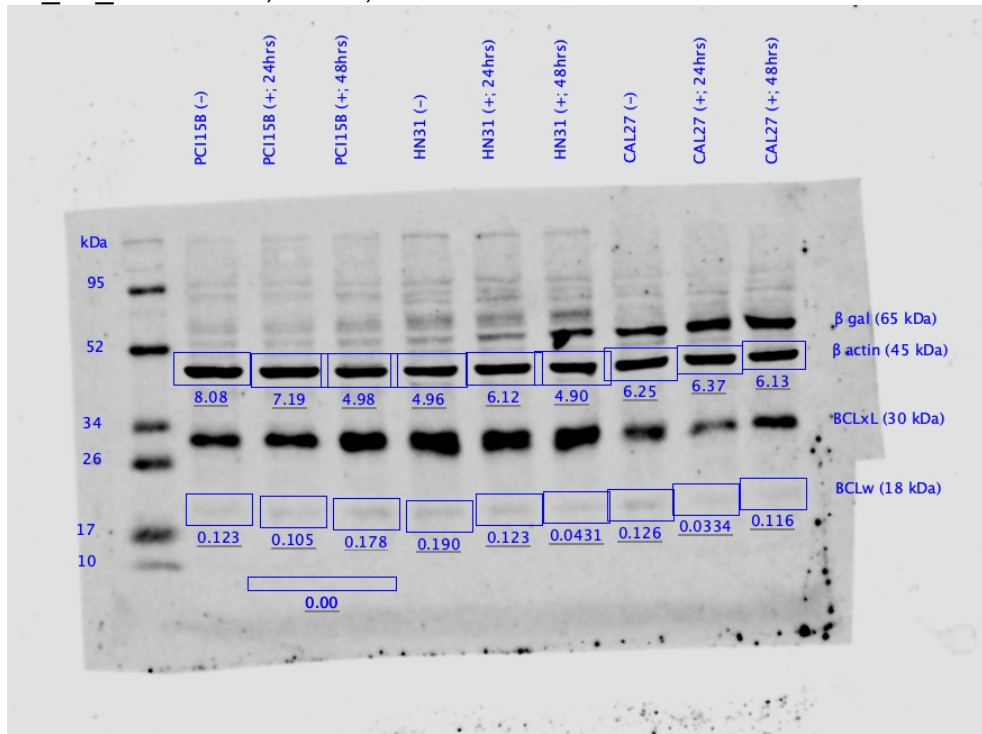


19_03_01: CAL27, HN31, PCI15B

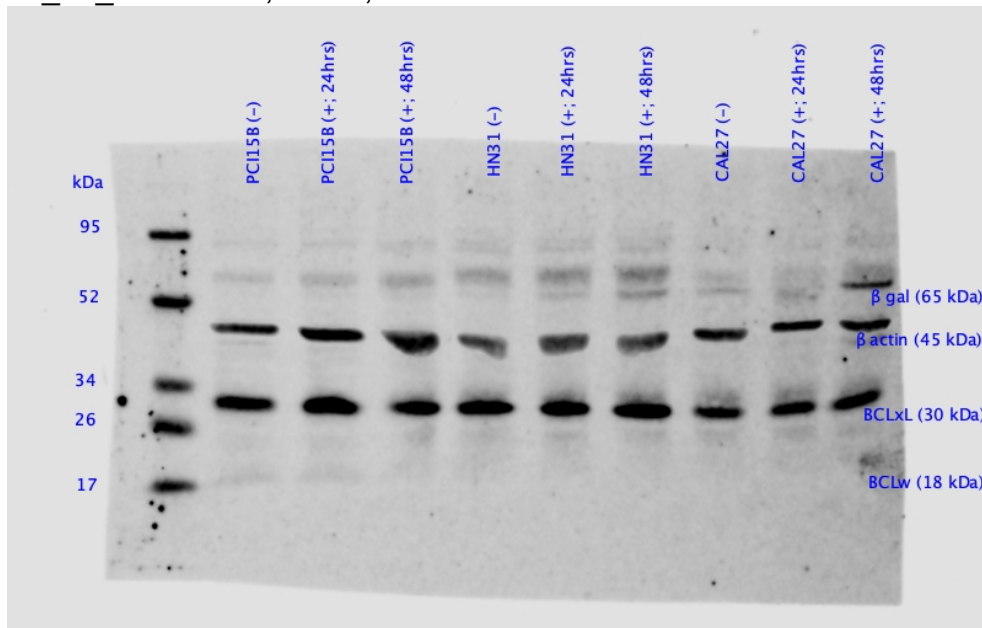


Part D: BCL-w

19_02_21: CAL27, HN31, PCI15B



19_02_25: CAL27, HN31, PCI15B



19_03_01: CAL27, HN31, PCI15B

