

Additional file 1

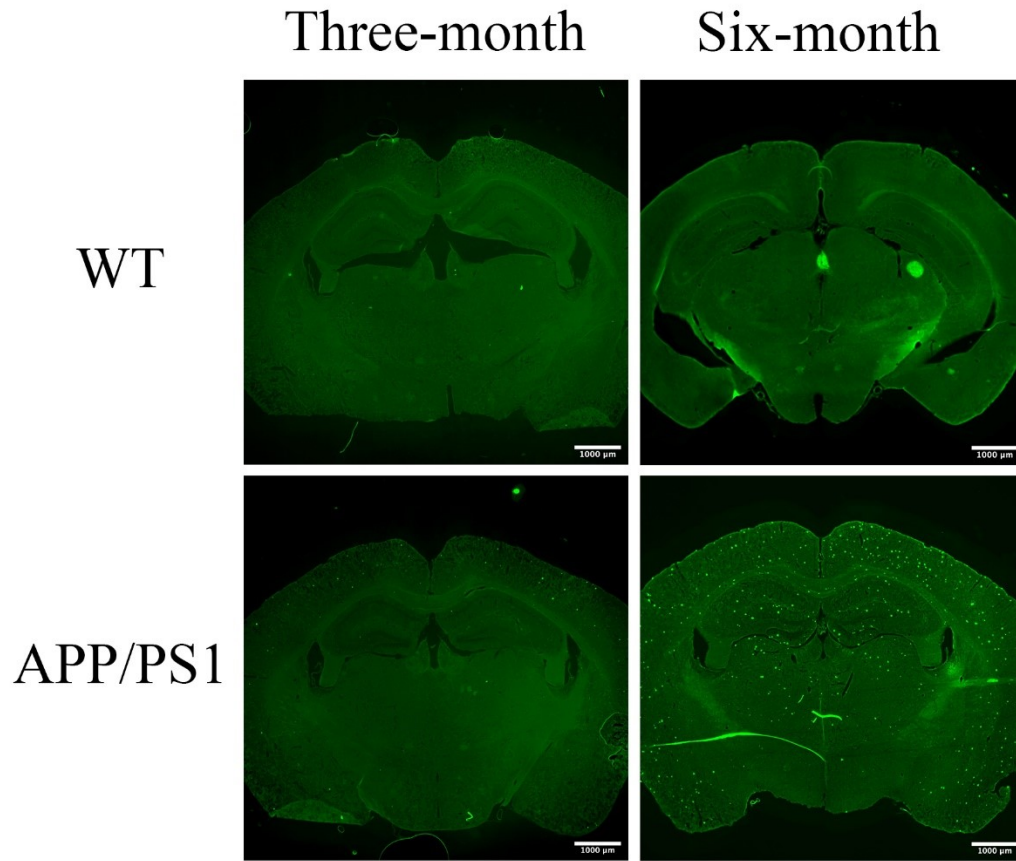


Figure S1. Amyloid plaques in 6-month old APP/PS1 mice. Thioflavin-S staining images showing the presence of extensive amyloid plaques in 6-month old APP/PS1, but little staining signals in 3-month old APP/PS1 mice, particularly in the hippocampus. No amyloid plaques were found in 3-month or 6-month WT mice. Scale bar: 1000 μm .