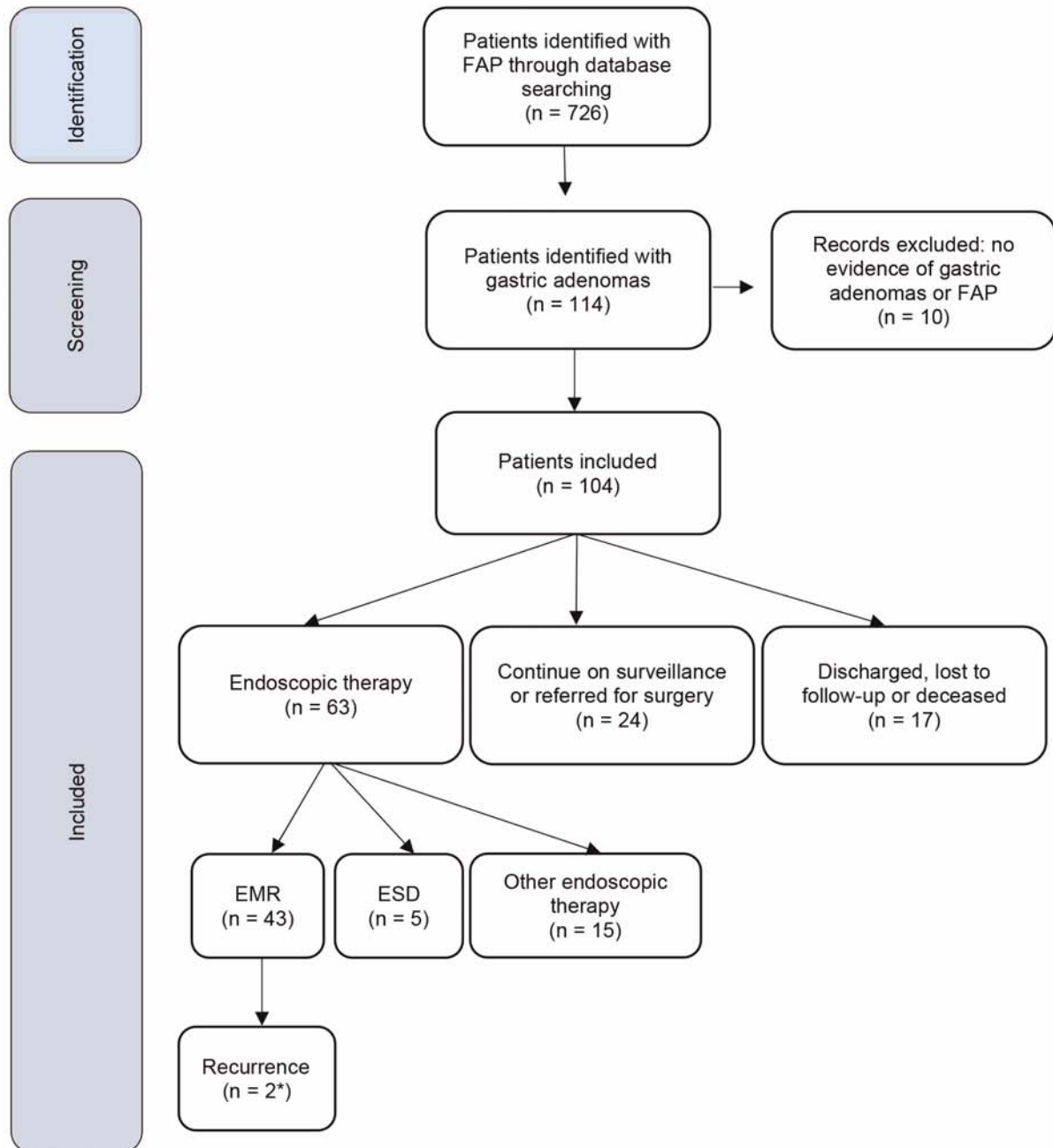


Supplementary material

Fig. 1s Patients included in study analysis



EMR, endoscopic mucosal resection; ESD, endoscopic submucosal dissection

* Recurrence occurred following piecemeal resection of lesions 15-50mm

Supplementary material

Table 1s Patient Demographics.

Demographic		No. of patients
	Patients	104
Gender	Female	49
	Male	55
Age at diagnosis (years)	Median (range)	47 (19-80)
Follow-up from initial gastric adenoma diagnosis (months)	Median (range)	37 (0-242)
APC mutation	Mutation identified	78
	Mutation not classified/identified	25
	No APC mutation (risk haplotype)	1
Location of APC mutation	Pre-mutation cluster region (5' of 1250)	48
	Mutation cluster region (1250-1464)	14
	Post mutation cluster region (3' of 1464)	13
	Deletion (location unclassified)	3
Spigelman Stage	0	8
	I	11
	II	25
	III	42
	IV	11
	Not classified	7
Size of largest gastric adenoma	<=20mm	56
	>20mm	6
	Not classified	42
	Median (mm) (range)	6 (1.5-50)
Location of gastric adenoma	Distal to incisura	64
	Proximal to incisura	36
	Proximal and distal to incisura (multiple)	2
	Not classified	2
Family history of gastric adenoma/carcinoma		11

Supplementary material

Table 2s Analysis of risk factors for high grade dysplasia.

Variable	Category	No high grade dysplasia	High grade dysplasia	p-value
Sex	Male	53 (96%)	2 (4%)	0.30
	Female	45 (94%)	3 (6%)	
Size adenoma (mm)	-	6 [3, 15]	25 [17, 35]	0.04
Adenoma location	Distal	62 (97%)	2 (3%)	0.17
	Proximal	32 (91%)	3 (8%)	
	Both	2 (100%)	0 (0%)	

Data (number (percentage) or median [inter-quartile range])

Supplementary material

Table 3s Features and outcomes of gastric cancer in patients diagnosed with gastric adenomas.

Gastric Cancer		5-20mm	>20mm	Size not classified	Total	Outcomes
Total		1	1	3	5	
Median age at diagnosis		62	60	52 (50-73)	-	
Median time from initial diagnosis of gastric adenoma to cancer (months)		26	102	115*	-	
<small>* Time from diagnosis of gastric adenoma to cancer diagnosis unclassified for 2 patients</small>						
Gender	Female	0	0	3	3	
	Male	1	1	0	2	
Location	Proximal	1	1	1	3	
	Distal	0	0	2	2	
Multiplicity	Solitary	0	1	1	2	
	Multiple	1	0	2	3	
Initial Intervention	EMR	1	1	1	3	
	ESD	0	0	1	1	
Biopsy only no intervention (metastatic disease at initial diagnosis)		0	0	1	1	No previous diagnosis of gastric adenoma. Gastric cancer associated with liver metastases & not amenable to surgery due to extensive desmoid disease. Died within 1 year of diagnosis
Histology of initial gastric adenoma	LGD	1	0	1	2	
	HGD	0	1	1	2	Initial lesion graded as HGD but revised to adenocarcinoma with clear resection margins following ESD. Discharged to local follow up and alive 3 years following intervention
Repeated intervention	EMR	1	0	0	1	Died unexpectedly 1 year later with a new diagnosis of small cell gastric cancer (Small cell gastric cancers are also known as high grade neuroendocrine carcinoma of the stomach and are a rare subtype of extra-pulmonary small cell carcinomas)
	Subtotal gastrectomy	0	1	0	1	Died from metastatic gastric cancer 2 years following surgery for recurrent lesion
	Gastrectomy and pancreas preserving duodenectomy	0	0	1	1	4 years later, further antral adenomas x2 with HGD and one gastric adenocarcinoma in antrum, underwent combined gastrectomy and pancreas preserving duodenectomy for gastric and advanced duodenal disease. Disease free 16 years following surgery

LGD, Low grade dysplasia; HGD, High grade dysplasia

EMR, endoscopic mucosal resection; ESD, endoscopic submucosal dissection.