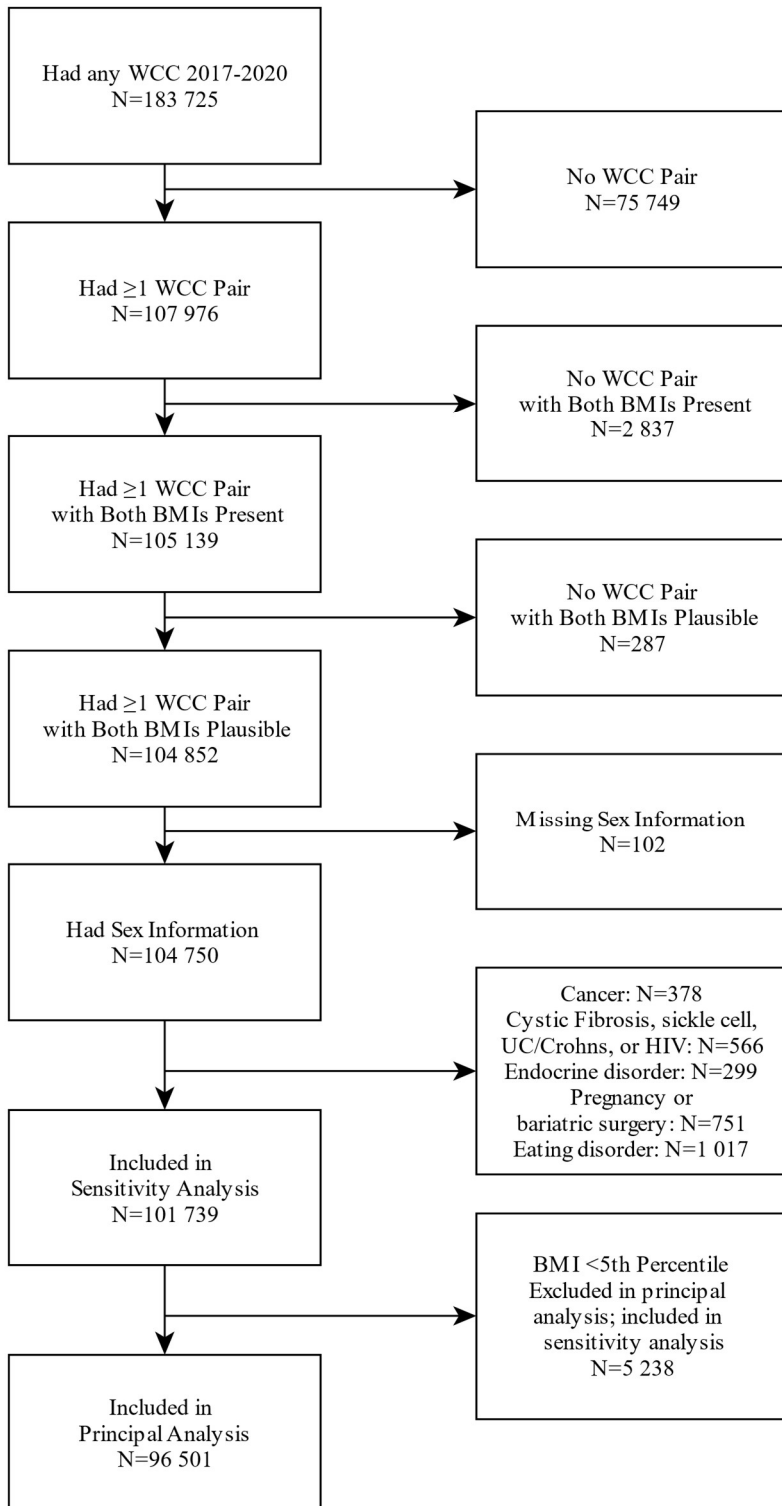


Supplementary material

Supplementary Figure 1: Attrition



*Counts of unique patients;
A patient may have contributed more than one WCC pair to the study*

Supplementary Table 1

Bias Analysis: Patients who were vs were not selected into OPTUM COVID data

Patient Group	Age-and-Sex Adjusted BMI Gain Since Previous WCC							
	Qualifying WCC Sep 2019				Qualifying WCC Sep 2020			
	N	Mean (SD)	50 th percentile	90 th percentile	N	Mean (SD)	50 th percentile	90 th percentile
Patient in Non-COVID OPTUM Data Only	39 695	0.34 (1.50)	0.22	2.07	34 173	0.57 (1.67)	0.39	2.58
Patient in OPTUM COVID Data	5 215	0.37 (1.53)	0.27	2.14	5 011	0.61 (1.72)	0.42	2.75

Supplementary Table 2

Bias Analysis: Patients who did not attend WCC, or had missing BMI, vs those who attended WCC in September-December of 2020

Patient Group	Age-and-Sex Adjusted BMI Gain Since Previous WCC							
	Sep-Dec 2019				Sep-Dec 2020			
	N	Mean (SD)	50 th percentile	90 th percentile	N	Mean (SD)	50 th percentile	90 th percentile
Patient has No WCC Pair in Late 2019	8 516	0.66 (1.77)	0.46	2.87
Patient has No WCC Pair in Late 2020	8 142	0.28 (1.65)	0.19	2.16
Patient has WCC Pair but Missing BMI in Late 2020	1 835	0.30 (1.46)	0.18	2.02
Patient has WCC Pairs in Late 2019 and Late 2020	8 649	0.32 (1.37)	0.21	1.95	8 649	0.58 (1.68)	0.41	2.70