

## Supplemental Appendix

### Table of Contents

Supplementary Tables .....	2
Table S1a. Baseline and On-Trial Physiologic Measurements, Risk Factors, and Medications by Listed Status. ....	2
Table S1b. Baseline and On-Trial Physiologic Measurements, Risk Factors, and Medications by Listed Status and treatment strategy.....	4
Table S2. Adjusted <sup>a</sup> hazard ratios for the invasive versus conservative strategy by renal transplant candidacy status estimated from Cox proportional hazards models of the component secondary outcomes. ....	6
Supplementary Figures .....	7
Figure S1a. Not listed and listed flow diagram .....	7
Figure S1b. Cardiac Catheterization and Revascularization Rates by Kidney Transplant Listing Status* .....	8
Figure S2. Reasons for Coronary Angiography and Revascularization at 3 Years in the Conservative Group of Listed Patients (n=100) .....	9
Figure S3. Forest Plot of Interaction between Listing status and Primary and Secondary outcomes.....	10
ISCHEMIA-CKD Trial Committee Members and Key Personnel .....	11
ISCHEMIA-CKD Trial Site Personnel .....	14

## Supplementary Tables

Table S1a. Baseline and On-Trial Physiologic Measurements, Risk Factors, and Medications by Listed Status.

	All participants (n = 777)			
	Baseline		Last visit	
	Not Listed	Listed	Not Listed	Listed
<b>Variables</b>	(n=583) <sup>1</sup>	(n=194)	(n=583)	(n=194)
Systolic BP <140 mm Hg	320/583 (55%)	109/193 (56%)	337/491 (69%)	113/165 (68%)
LDL cholesterol <70 mg/dl	185/554 (33%)	69/173 (40%)	228/457 (50%)	70/146 (48%)
Not smoking	511/583 (88%)	182/194 (94%) *	431/474 (91%)	149/156 (96%)
<b>Medications</b>				
Aspirin or aspirin alternative	471/552 (85%)	145/188 (77%) *	409/469 (87%)	139/158 (88%)
Clopidogrel	148/583 (25%)	27/193 (14%) *	149/498 (30%)	26/166 (16%) *
Anticoagulant	69/572 (12%)	10/191 (5%) *	54/496 (11%)	14/165 (8%)
Statins	485/583 (83%)	144/193 (75%) *	442/498 (89%)	124/166 (75%) *
High-intensity statin	157/580 (27%)	46/193 (24%)	191/498 (38%)	62/166 (37%)
Ezetimibe	19/583 (3%)	8/193 (4%)	109/498 (22%)	13/166 (8%) *
ACE inhibitor / ARB	281/583 (48%)	89/193 (46%)	213/498 (43%)	70/166 (42%)
<b>Adherence to Medications<sup>2</sup></b>	348/561 (62%)	131/186 (70%) *	336/483 (70%)	133/159 (84%) *

---

Notes: ACE= angiotensin converting enzyme; ARB= angiotensin receptor blockers; BP= blood pressure; CON= conservative; INV= invasive; LDL= low density lipoprotein. Aspirin alternative denotes P2Y12 inhibitor. Antiplatelet denotes aspirin or P2Y12 inhibitor.

<sup>1</sup>For each individual OMT goal, the last visit is defined as the latest visit (at least 12 months after randomization) where the goal is evaluable. If the latest visit where the goal is evaluable is less than 12 months after randomization then the individual OMT goal is missing. Last visit individual OMT goals could be assessed at different visits.

<sup>2</sup>Based on Morisky-Green-Levine medication adherence survey (Morisky DE, Green LW, Levine DM. Concurrent and predictive validity of a self-reported measure of medication adherence. *Medical Care* 1986;24:67-74). A summary binary variable was created by coding those who responded strongly agree, agree, don't know, or refuse to any of the 4 questions in the survey as non-adherent; otherwise, patients were coded as adherent.

“\*” marks p-value smaller than 0.05 of comparison between Not Listed and Listed. P-values were obtained using Pearson's chi-squared test, or Fisher's exact test when expected cell size was smaller than five.

Table S1b. Baseline and On-Trial Physiologic Measurements, Risk Factors, and Medications by Listed Status and treatment strategy.

	Only Listed participants (n = 194)				Only Not Listed participants (n = 583)			
	Baseline		Last visit		Baseline		Last visit	
	CON	INV	CON	INV	CON	INV	CON	INV
<b>Variables</b>	(n=100)	(n=94)	(n=100)	(n=94)	(n=289)	(n=294)	(n=289)	(n=294)
Systolic BP <140 mm Hg	52/100 (52%)	57/93 (61%)	62/89 (70%)	51/76 (67%)	167/289 (58%)	153/294 (52%)	174/250 (70%)	163/241 (68%)
LDL cholesterol <70 mg/dl	31/90 (34%)	38/83 (46%)	35/79 (44%)	35/67 (52%)	97/278 (35%)	88/276 (32%)	119/231 (52%)	109/226 (48%)
Not smoking	94/100 (94%)	88/94 (94%)	82/84 (98%)	67/72 (93%)	257/289 (89%)	254/294 (86%)	220/239 (92%)	211/235 (90%)
<b>Medications</b>								
Aspirin or aspirin alternative	75/97 (77%)	70/91 (77%)	72/86 (84%)	67/72 (93%)	227/270 (84%)	244/282 (87%)	211/239 (88%)	198/230 (86%)
Clopidogrel	19/100 (19%)	8/93 (9%)	14/89 (16%)	12/77 (16%)	67/289 (23%)	81/294 (28%)	67/252 (27%)	82/246 (33%)
Anticoagulant	6/100 (6%)	4/91 (4%)	5/88 (6%)	9/77 (12%)	37/284 (13%)	32/288 (11%)	27/251 (11%)	27/245 (11%)
Statins	76/100 (76%)	68/93 (73%)	63/89 (71%)	61/77 (79%)	237/289 (82%)	248/294 (84%)	222/252 (88%)	220/246 (89%)
High-intensity statin	22/100	24/93 (26%)	26/89 (29%)	36/77 (47%)	71/288	86/292	94/252	97/246

	(22%)			*	(25%)	(29%)	(37%)	(39%)
Ezetimibe	2/100 (2%)	6/93 (6%)	5/89 (6%)	8/77 (10%)	9/289 (3%)	10/294 (3%)	54/252 (21%)	55/246 (22%)
ACE inhibitor / ARB	39/100 (39%)	50/93 (54%)	41/89 (46%)	29/77 (38%)	147/289 (51%)	134/294 (46%)	107/252 (42%)	106/246 (43%)
<b>Adherence to Medications<sup>2</sup></b>	68/99 (69%)	63/87 (72%)	72/85 (85%)	61/74 (82%)	177/278 (64%)	171/283 (60%)	171/242 (71%)	165/241 (68%)

Notes: ACE= angiotensin converting enzyme; ARB= angiotensin receptor blockers; BP= blood pressure; CON= conservative; INV= invasive; LDL= low density lipoprotein. Aspirin alternative denotes P2Y12 inhibitor. Antiplatelet denotes aspirin or P2Y12 inhibitor.

<sup>1</sup>For each individual OMT goal, the last visit is defined as the latest visit (at least 12 months after randomization) where the goal is evaluable. If the latest visit where the goal is evaluable is less than 12 months after randomization then the individual OMT goal is missing. Last visit individual OMT goals could be assessed at different visits.

<sup>2</sup>Based on Morisky-Green-Levine medication adherence survey (Morisky DE, Green LW, Levine DM. Concurrent and predictive validity of a self-reported measure of medication adherence. Medical Care 1986;24:67-74). A summary binary variable was created by coding those who responded strongly agree, agree, don't know, or refuse to any of the 4 questions in the survey as non-adherent; otherwise, patients were coded as adherent.

“\*” marks p-value smaller than 0.05 of comparison between CON and INV

Table S2. Adjusted<sup>a</sup> hazard ratios for the invasive versus conservative strategy by renal transplant candidacy status estimated from Cox proportional hazards models of the component secondary outcomes.

	No. (%) of Patients with an Event		Adj. HR <sup>b</sup> (95% CI)	P-value for Interaction
	CON (n=389)	INV (n=388)		
<b>Secondary Outcomes</b>				
<i>All-cause death</i>				0.757
Not Listed	75/289 (26%)	73/294 (25%)	1.04 (0.75, 1.44)	
Listed	23/100 (23%)	21/94 (22%)	0.94 (0.52, 1.69)	
<i>Non-fatal myocardial infarction</i>				0.634
Not Listed	44/289 (15%)	34/294 (12%)	0.80 (0.51, 1.25)	
Listed	12/100 (12%)	12/94 (13%)	1.00 (0.45, 2.23)	
<i>Unstable angina</i>				1.000
Not Listed	4/289 (1%)	1/294 (0%)	0.17 (0.02, 1.75)	
Listed	2/100 (2%)	0/94 (0%)	- <sup>c</sup>	
<i>Heart failure</i>				0.259
Not Listed	9/289 (3%)	14/294 (5%)	1.80 (0.77, 4.22)	
Listed	3/100 (3%)	3/94 (3%)	0.62 (0.12, 3.21)	
<i>Resuscitated cardiac arrest</i>				-
Not Listed	0/289 (0%)	0/294 (0%)	-	
Listed	0/100 (0%)	0/94 (0%)	-	
<i>Stroke</i>				0.122
Not Listed	2/289 (0%)	15/294 (5%)	7.91 (1.80, 34.77)	
Listed	4/100 (4%)	7/94 (2%)	1.72 (0.49, 5.96)	

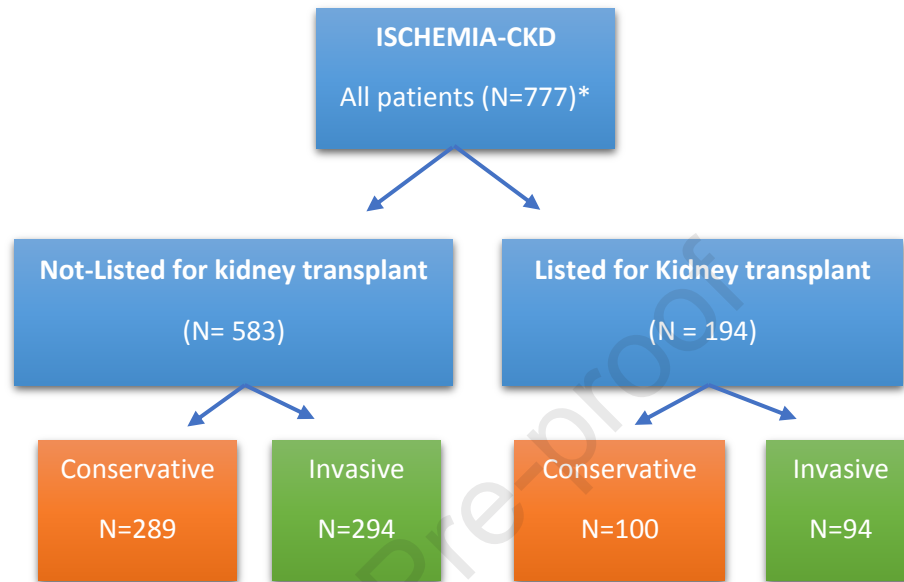
<sup>a</sup>All models are adjusted for age, sex, kidney function, left ventricular ejection fraction, and diabetes.

<sup>b</sup>The hazard ratio is for the invasive-strategy group as compared with the conservative-strategy group.

<sup>c</sup>Due to limited number of events for UA and RCA, the hazard ratio could not be calculated well.

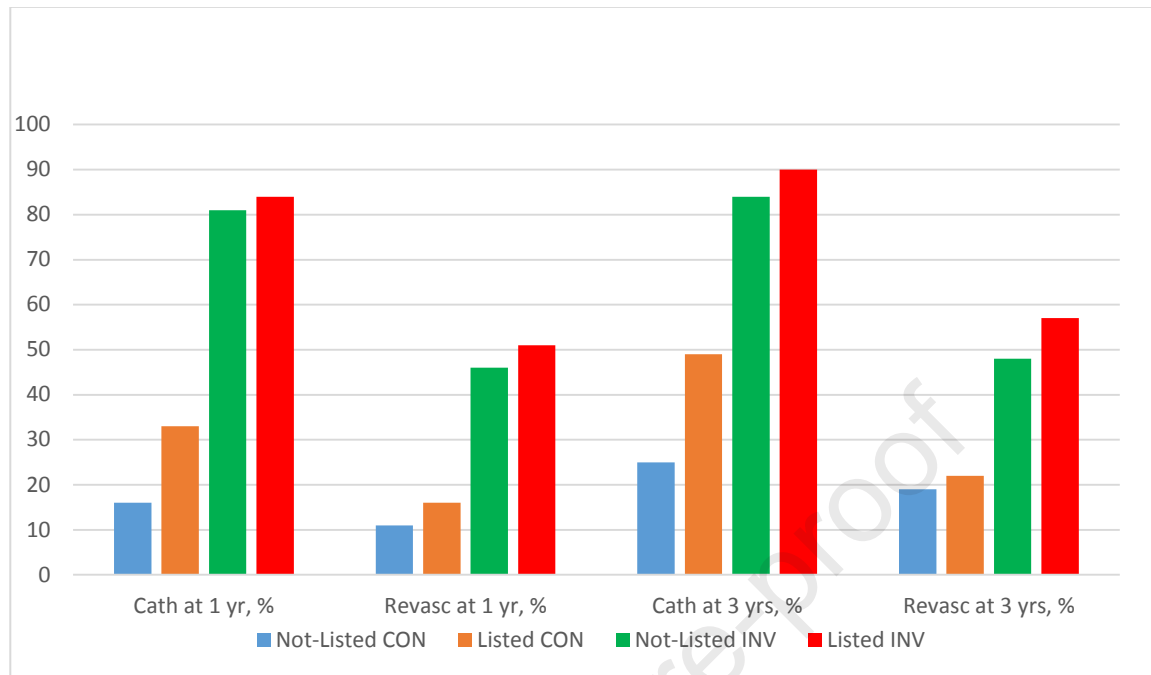
Supplementary Figures

Figure S1a. Not listed and listed flow diagram



Flow diagram of patients between Not-Listed and Listed and treatment strategy allocation within each of those groups

Figure S1b. Cardiac Catheterization and Revascularization Rates by Kidney Transplant Listing Status\*



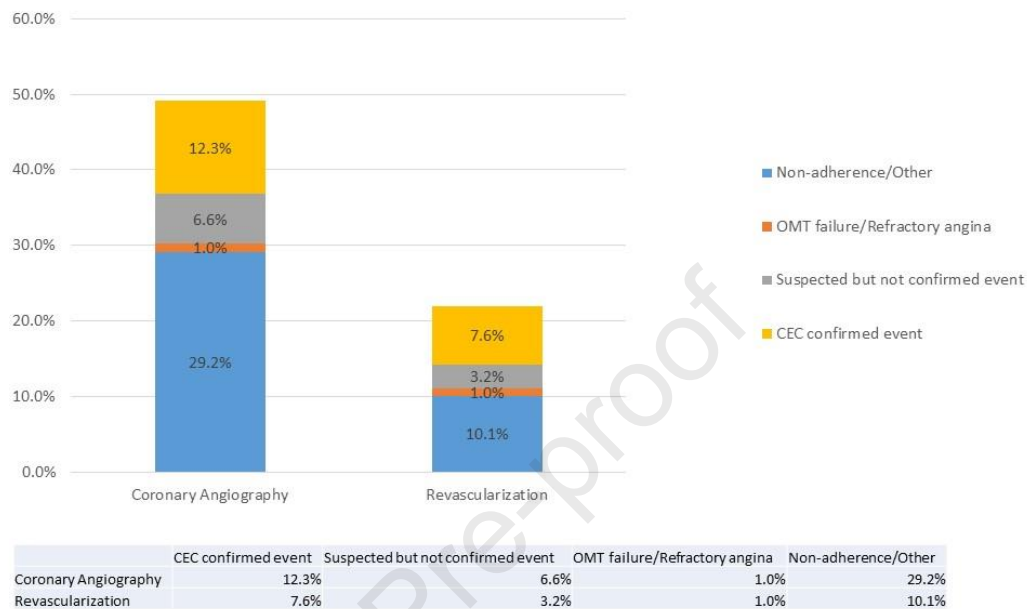
Represents the proportion of patients within CON and INV who received coronary angiography and revascularization between those who were Not-Listed and Listed

\*Cardiac cath rates for all patients (N=777) at 3 years: CON 31%, INV 85%.

\*Revascularization rates for all patients (N=777) at 3 years: CON 19%, INV 50%.

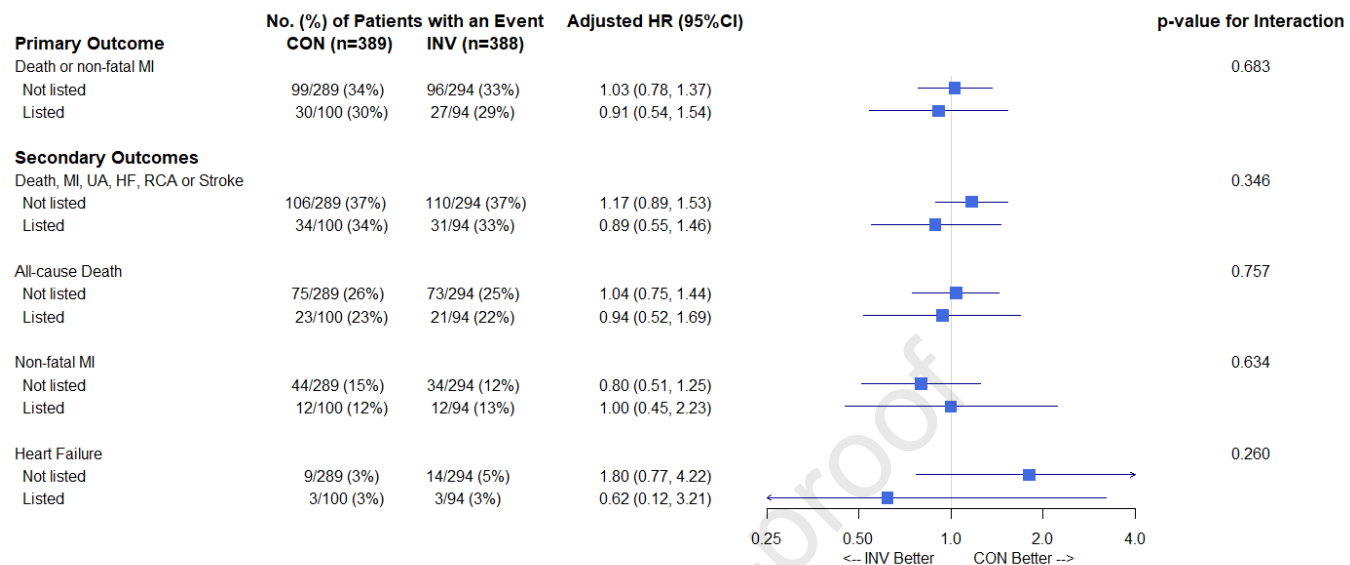


Figure S2. Reasons for Coronary Angiography and Revascularization at 3 Years in the Conservative Group of Listed Patients (n=100)



Stacked bar chart of reasons for coronary angiography (left) and revascularization (right) in Listed patients in the initial conservative strategy arm.

Figure S3. Forest Plot of Interaction between Listing status and Primary and Secondary outcomes



Forest plot for interaction between listing status and randomization group for primary and secondary outcomes

## ISCHEMIA-CKD Trial Committee Members and Key Personnel

### **National Heart, Lung, and Blood Institute**

Jerome L. Fleg, Project Officer

Ruth Kirby

### **ISCHEMIA Clinical Coordinating Center (CCC)\***

#### **Study Leadership**

Sripal Bangalore (Principal Investigator)

#### **CCC Faculty**

Jeffrey Berger (Director of the Biorepository, ISCHEMIA Regional Leader)

Roy Mathew (Country Lead Nephrologist for US)

Jonathan Newman (ISCHEMIA Regional Leader)

Harmony R. Reynolds (ISCHEMIA Regional Leader)

Mandeep Sidhu (US-VA Regional Co-Leader)

#### **Program Director**

Stephanie Mavromichalis

#### **Project Managers**

Gia Cobb

Stephanie Ferket\*\*

Andre Gabriel\*\*

#### **Clinical Research Associates**

Diana Cukali

Kevin McMahon\*\*

#### **Clinical Trial Assistants**

Ahmed Ayoub

Matthew Shinseki\*\*

Paula Wilson

Solomon Yakubov\*\*

#### **Data Analyst**

Mark Xavier

*\*see ISCHEMIA Trial Design Manuscript for complete listing*

*\*\*past members*

### **ISCHEMIA Statistical and Data Coordinating Center, Duke Clinical Research Institute**

Sean O' Brien, Principal Investigator

See ISCHEMIA Trial Design Manuscript for complete listing

## **ISCHEMIA-CKD Committee Members**

### **Steering Committee**

Sripal Bangalore, Principal Investigator  
Judith S. Hochman, ISCHEMIA trial Chair  
David J. Maron, ISCHEMIA trial Co-Chair  
Glenn M. Chertow, Nephrologist  
William Boden, ISCHEMIA trial Co-PI  
Bruce Ferguson, ISCHEMIA trial Co-PI  
Robert Harrington, ISCHEMIA trial Co-PI  
Gregg W. Stone, ISCHEMIA trial Co-PI  
David O. Williams, ISCHEMIA trial Co-PI

### **Renal Committee**

Charles A. Herzog (Chair)  
David M. Charytan (Co-Chair)  
Sripal Bangalore  
Carlo Briguori  
David M. Charytan  
Glenn M. Chertow  
Jerome Fleg  
Peter A. McCullough  
Roxana Mehran  
Ruth Kirby

### **Publications Committee**

Sripal Bangalore (Chair)  
Karen Alexander  
Jerome Fleg  
Judith S. Hochman  
David J. Maron  
Roy Mathew  
Sean M. O'Brien  
Harmony R. Reynolds  
Mandeep Sidhu

### **Optimal Medical Therapy Committee**

Same as the ISCHEMIA trial (See ISCHEMIA Trial Design Manuscript for complete listing)

### **Optimal Revascularization Therapy Planning Committee**

Same as the ISCHEMIA trial (See ISCHEMIA Trial Design Manuscript for complete listing)

### **Clinical Event Review Committee**

Same as the ISCHEMIA trial (See ISCHEMIA Trial Design Manuscript for complete listing)

### **BioRepository Committee**

Same as the ISCHEMIA trial (See ISCHEMIA Trial Design Manuscript for complete listing)

  
**EQOL Committee**

Same as the ISCHEMIA trial (See ISCHEMIA Trial Design Manuscript for complete listing)

**Recruitment for Women & Minorities**

Same as the ISCHEMIA trial (See ISCHEMIA Trial Design Manuscript for complete listing)

**DSMB Members**

Same as the ISCHEMIA trial (See ISCHEMIA Trial Design Manuscript for complete listing)

**Independent Statistical Analysis Center for DSMB Reporting**

Same as the ISCHEMIA trial (See ISCHEMIA Trial Design Manuscript for complete listing)

**ECG/ETT CoreLab**

Same as the ISCHEMIA trial (See ISCHEMIA Trial Design Manuscript for complete listing)

**Angiographic Core Lab**

Same as the ISCHEMIA trial (See ISCHEMIA Trial Design Manuscript for complete listing)

**Academic Research Organizations (AROs)**

Same as the ISCHEMIA trial (See ISCHEMIA Trial Design Manuscript for complete listing)

**Contract Research Organizations (CROs)**

Same as the ISCHEMIA trial (See ISCHEMIA Trial Design Manuscript for complete listing)

Journal Pre-proof

## ISCHEMIA-CKD Trial Site Personnel

Country (No. Randomizations)	Investigator(s)	Study Coordinator(s)	City & State (if applicable)	Institution (No. Randomizations)
<b>United States (159)</b>				
Lead Country Nephrologist				
Roy Mathew, MD	Mayil S. Krishnam, MD Jeffrey C. Milliken, MD Pranav M. Patel, MD Arnold H. Seto, MD Kevin T. Harley, MD (N) Michael A. Gibson, MD Byron J. Allen, MD Wei Ling Lau, MD (N)	Shirin Heydari, MS Edgar Karanjah, MD Wanda C. Marfori, MD Eduardo Hernandez-Rangel, MD Pam Singh	Orange, CA	University of California Irvine Medical Center (23)
	Patricia Pellikka, MD LaTonya J. Hickson, MD (N)	Gaylin Petty, CVT Susan K. Milbrandt Dawn D. Shelstad	Rochester, MN	Mayo Clinic (16)
	Harmony R. Reynolds, MD Jonathan D. Newman, MD, MPH Sripal Bangalore, MD, MHA Lawrence M. Phillips, MD Muhammed Saric, MD Olga Zhdanova, MD (N)	Stanley E. Cobos, BA Kirsten J. Quiles, MS Raven R. Dwyer, MPH Dalisa Espinosa, MBS	New York, NY	NYU Langone Medical Center-Bellevue Hospital (15)
	Kreton Mavromatis, MD Jason Linefsky, MD Harold Franch, MD (N)	John Doan, MD Raven Lee, CCRP Risha Patel	Decatur, GA	Atlanta VA Medical Center (13)
	Anjali Acharya, MD (N) Seth Sokol, MD Jay Meisner, MD Amit Kakkar, MD Tarek Rashid, MD Hatem Elabd, MD	Jeanne Russo, RN Cidney Schultz, RN	Bronx, NY	Jacobi Medical Center (12)
	Charles Herzog, MD Mengistu Simegn, MD	Shari Mackedanz Barbara Wicklund	Minneapolis, MN	Hennepin County Medical Center (9)
	Salvatore P. Costa, MD Terrance Welch, MD Michael Chobanian, MD (N)	Henry C. Stokes, RN Gaylin Petty, CVT	Lebanon, NH	Dartmouth Hitchcock Medical Center (7)
	Subhash Banerjee, MD	Preeti Kamath, BDS, MHA, CCRP Ishita Tejani, BDS, MS, MSPH	Dallas, TX	V.A. North Texas Health Care System (6)
	Adedayo Adeboye, MD Roy Mathew, MD (N)	Amy Flowers Kathryn Mason Anjana Rishmawi	Columbia, SC	William Jennings Bryan Dorn V.A. Medical Center (5)
	Sudhanva S. Hegde, MD	Stanley E. Cobos, BA Raven R. Dwyer, MPH Dalisa Espinosa, MBS Kirsten J. Quiles, MS Carolyn J. Gruber, PA-C Noelle M. Durfee, MS PA-C	Brooklyn, NY	Kings County Hospital Center (9)
	Khaled Abdul-Nour, MD Lalathaksha Kumbar, MD (N) Jerry Yee, MD (N)	Heather Golden Naima L. Ogletree, DNP, APRN-BC Schawana Thaxton, DNP, NP-C	Detroit, MI	Henry Ford Health System (4)

Alec Moorman, MD Bilal Malik, MD (N)	Fatima Ranjbaran, RN Bryn Smith, BS Carly Ohmart	Seattle, WA	University of Washington Medical Center (4)
Radmilar Lyubarova, MD Mohammad El-Hajjar, MD Mandeep S. Sidhu, MD, MBA Steven A. Fein, MD Mikhail T. Torosoff, MD, PhD Radmila Lyubarova, MD Sulagna Mookherjee, MD Krzysztof Drzymalski, MD Rafia Chaudhry, MD (N) Krishnakumar Hongalgi, MD (N) Arif Asif, MD (N)(2012-2015) Loay Salman, MD (N)(2015-2018)	Wendy L. Stewart, MS Kristin M. Salmi, BS	Albany, NY	Albany Medical Center Hospital (3)
Patricia K. Nguyen, MD Yiming Lit, MD (N)	Davis Vo, BS James Hirsch, BS	Palo Alto, CA	VA Palo Alto Healthcare System (3)
Steven P. Sedlis, MD Robert M. Donnino, MD Jeffrey Lorin, MD David Goldfarb, MD (N)	Leandro C. Maranan, CCRC	New York, NY	VA New York Harbor Health Care System (3)
Mohammad El-Hajjar, MD Paul Der Mesropian, MD (N) Joseph Sacco, MD Naveed Akhtar, MD Maris Orgera, MD Mandeep S. Sidhu, MD, MBA (2012-2016) Roy Mathew, MD (N) (2012-2015) Elvira Gosmanova, MD (N) (2015-2018)	Jennifer Thomson, MA	Albany, NY	Samuel Stratton VA Medical Center of Albany NY (2)
Fadi Hage, MD Dana Rizk, MD (N) James E. Davies, MD Massoud Leesar, MD Jaekyeong Heo, MD Amy Iskandrian, MD Firas Al Solaiman, MD Satinder Singh, MD	Badhma Valaiyapathi, MD	Birmingham, AL	UAB Vascular Biology and Hypertension Program (2)
Peter H. Stone, MD David Charytan, MD (N)	Hermine Osseni, MS Charlene Wiyarand (BS) Peter Douglass, BA Hayley Pomeroy, BA Alexandra Craft, BA Bethany Harvey, BA	Boston, MA	Brigham & Women's Hospital, Harvard Medical School (2)
Kevin Marzo, MD Juan Gaztanaga, MD Shayan Shirazian, MD (N)	Wendy Drewes, RN Dipti Patel, RN	Mineola, NY	NYU Winthrop (2)
Lekshmi Dharmarajan, MD	Jenne M. Jose, PA Stanley E. Cobos, BA Raven R. Dwyer, MPH Kirsten J. Quiles, MS	Bronx, NY	NYU-HHC Lincoln Medical and Mental Health Center (2)
Janani Rangaswami, MD (N) Christian Witzke, MD Gregg Pressman, MD	Rachel Murphy, BS Kinnari Murphy, MPH	Philadelphia, PA	Albert Einstein Medical Center (2)
John B. Kostis, MD	Nora M. Cosgrove, RN	New	Cardiovascular Institute, Rutgers RWJ Medical

		Brunswick, NJ	School (1)
Abel E. Moreyra, MD Jonathan Lebowitz, MD (N)			
Ellis W. Lader, MD Beth Stefanchik, MD (N)	Martha Meyer, RN, MSN	Kingston, NY	Mid Valley Cardiology (1)
Sampornima Setty, MD Balaji Srinivasan, MD (N)	Kimberly E. Halverson, RHIT Christine Roraff, RN Jonean Thorsen, RN	La Crosse, WI	Gundersen Lutheran Medical Center (1)
Rita Coram, MD	Anne Marie Webb, BSN Ellie Fridell, BS Heidi Wilson, BS	Louisville, KY	University of Louisville (1)
David Booth, MD John Kotter, MD Ahmed Abdel-Latif, MD, PhD Sadiq Ahmed, MD (N)	Yvonne Taul, RN Caroline Rodgers, RN Jennifer Isaacs, MS Viktoria Bulkley, RN Laura True, RN Alexandra Hunter, MPH	Lexington, KY	Lexington VA Medical Center (1)
Michelle Ratliff, MD Karen Servilla, MD (N)	Robyn Elliott Jennifer Hogan	Albuquerque, NM	New Mexico V.A. Healthcare System (1)
James J. Jang, MD Gennie Yee, MD Deepa Ramaswamy, MD (N)	Olivia Anaya	San Jose, CA	Kaiser Permanente San Jose (1)
Michel Georges Khouri, MD John Middleton, MD (N)	Kristine Arges Melissa LeFevre Jennifer Tomfohr	Durham, NC	Duke University Medical Center (1)
Jason T. Call, MD David Sisson, MD (N)	Stephanie, M. Lane, RN, BSN, CCRN Jennifer L. Stanford, RN, MSN	Winchester, VA	Winchester Cardiology and Vascular Medicine, PC (1)
Prakash Deedwania, MD Kiran Reddy, MD Mei Hwang, MD (N)	Antonia Vega	Fresno, CA	UCSF - Fresno Community Regional Medical Center (1)
Steven Weitz, MD Page Salanger, MD (N)	Steven Giovannone Lori Pritchard, RN	Schenectady, NY	Cardiology Associates of Schenectady P.C. (1)
Ray Wyman, MD	Joy Burkhardt, CCRP Suellen Hosino, RN, BSN, CCRP	Torrance, CA	Torrance Memorial Medical Center (1)
Khaled Dajani, MD Holly Mattix-Kramer, MD (N) Verghese Mathew, MD	Carol M. Kartje, BSN	Maywood, IL	Loyola University Medical Center (1)
Michael D. Shapiro, DO Jose Rueda, MD (N)	Aynun Naher, MBBS, MS David Schlichting, LPN	Portland, OR	Oregon Health & Science University (1)
Omar Almousalli, MD John Lehman, MD Norbert Urbanski, MD	Elizabeth Capasso-Gulve Alaine Melanie Loehr Marlowe Mosley	Fairview Heights, IL	Advanced Heart Care Group / MEDICORICIUM, L.L.C. (1)

#### Russia (111)

Lead Country Cardiologist  
Olga Bockeria, MD, PhD  
Lead Country Nephrologist  
Evgeny Shutov, MD

Alexander M. Chernyavskiy, MD, PhD Evgeniy I. Kretov, MD Igor O. Grazhdankin, MD Alexander Sergeevich Borisov, MD (N)	Ivan A. Naryshkin, MD	Novosibirsk	E.Meshalkin National Medical Research Center of the Ministry of Health of the Russian Federation (73)
Leo A. Bockeria, MD, PhD Karen Petrosyan, MD, PhD	Olga Bockeria, MD, PhD Zalina Kudzoeva, MD	Moscow	National Medical Research Center for Cardiovascular Surgery (34)



Evgeny Shutov, MD (N)			
Leonid L. Bershtein, MD, PhD	Irina Subbotina	Saint Petersburg	North-Western State Medical University (4)
Sergey A. Sayganov, MD, PhD	Victoria Gumerova		
Anastasia M. Kuzmina-Krutetskaya, MD			
Elizaveta V. Zbyshevskaya, MD, PhD			
Nana O. Katamadze, MD, PhD			
Vladimir Rysniansky, MD (N)			

#### Poland (105)

Lead Country Cardiologists  
Radoslaw Pracon, MD, PhD  
Marcin Demkow, MD, PhD  
Lead Country Nephrologist  
Robert Malecki, MD

Tomasz Mazurek, MD, PhD	Jakub Maksym, MD	Warszawa	Medical University of Warsaw (57)
Karolina Wojtera, MD			
Anna Fojt, MD			
Ewa Szczerba, MD			
Piotr Pruszczyk, MD, PhD	Andrzej Łabyk, MD	Warszawa	Department of Internal Medicine and Cardiology, Infant Jesus Teaching Hospital, Medical University of Warsaw (22)
Marek Roik, MD, PhD	Agnieszka Szramowska, MD Olga Zdończyk, MD		
Marcin Demkow, MD, PhD	Olga Walesiak	Warsaw	Coronary and Structural Heart Diseases Department, Institute of Cardiology (19)
Radoslaw Pracon, MD, PhD	Katarzyna Malinowska		
Cezary Kepka, MD PhD			
Anna Teresinska, MD PhD			
Karolina Kryczka, MD PhD			
Jan Henzel, MD PhD			
Mateusz Solecki, MD PhD			
Edyta Kaczmarska, MD PhD			
Robert Malecki, MD (N)			
Jaroslaw Drozd, PhD	Marta Swiderek, MA	Lodz	Cardiology Clinic, Medical University in Lodz (7)
Bartosz Czarniak, MD	Ewelina Wojtala, MA		
Malgorzata Frach (formerly Stasiak), MD			
Konrad Szymczyk, MD			
Iwona Niedzwiecka, MD			
Sebastian Sobczak, MD			
Tomasz Ciurus, MD			
Piotr Jakubowski, MD			
Magdalena Misztal-Teodorczyk, MD			
Dawid Teodorczyk, MD			
Aleksandra Fratczak, MD			
Marcin Szkopiak, MD			
Patrycja Lebioda, MD			
Michal Wlodarczyk, MD			
Anna Plachcinska, MD			
Jacek Kusmierek, MD			
Magdalena Miller, MD			
Halina Marciniak, MD			
Karolina Wojtczak-Soska, MD			
Katarzyna Łuczak, MD			
Tomasz Tarchalski, MD			
Anna Cichocka-Radwan, MD			

#### India (92)

Lead Country Cardiology

Balram Bhargava, DM  
Lead Country Nephrologist  
Sandeep Mahajan, MD

Sajeew Chakanalil Govindan, MD, DNB, DM, PhD Rajesh Gopalan Nair, MD, DNB, DM Meleamadathil Srilatha, MD, DM (N)	Anjali Anand, MSc Janitha Raj, B.Tech Reshma Ravindran, MSc Rajalekshmi VS, MSc, MScCRRA	Calicut	Government Medical College (23)
Atul Mathur, MD Upendra Kaul, MD Sanjeev Gulati MD, DM (N)	Ajit Singh Narula, MD Vijay Kher, MD Puneet Sodhi, MD	New Delhi	Fortis Escort Heart Institute (13)
Anoop Mathew, MD Eapen Punnoose, MD TA Kishore, MD (N) Satish Sankaranarayanan, MD (N)	Binoy Mannekkattukudy Kurian	Kolenchery	MOSC Medical College Hospital (12)
Ranjan Kachru, MD Sanjeev Gulati, MD (N)	Abhishek Dubey, PGDACR	New Delhi	Fortis Healthcare Fl.t Lt. Rajan Dhall Hospital (11)
Balram Bhargava, DM Sandeep Mahajan, MD (N) G.Karthikeyan, DM S.Ramakrishnan, DM Sandeep Seth, DM Rakesh Yadav, DM Sandeep Singh, DM Ambuj Roy, DM Neeraj Parakh, DM Sunil Kumar Verma, DM Rajiv Narang, DM Sundeep Mishra, DM Nitish Naik, DM Gautam Sharma, DM Shiv Kumar Choudhary, M.Ch Chetan Patel, DNB Gurpreet Gulati, MD Sanjeev Sharma, MD V K Bahl, DM	Chandini Suvarna, BDS	New Delhi	All India Institute Of Medical Sciences (8)
Neeraj Pandit, MD, DM Ajay Sharma, MD, DM Niruta Sharma MD Hemant Shakhar Mahapatra MD	Sheromani Bajaj Vandana Yadav, Msc, PGDACR Girish Mishra, Msc, PGDACR	New Delhi	Dr Ram Manohar Lohia Hospital (5)
Cholenahally Nanjappa Manjunath, MD, DM Nagaraja Moorthy, MD, DM Satvic Cholenahally Manjunath, MD, DM Suryaprakash Narayanappa, MBBS Umesh Lingaraj, MD (N) Veerabhadra Gupta, MD (N)	Nandita Nataraj, BE(Biotech) PGDICRCMD Soundarya Nayak, BE(Biotech) PGDICRCMD Mahevamma Mylarappa, GNM (General Nursing)	Bengaluru	Sri Jayadeva Institute of Cardiovascular Sciences and Research (4)
Miliind Avdhoot Gadkari, MD Siddharth Gadage, MD DNB Tapan Umesh Pillay, BHMS MSc Valentine Lobo, MD (N)	Sheetal Rupesh Karwa, BHMS Suvarna Kolhe, MSc	Pune	KEM Hospital Pune (4)
Johann Christopher, MD, DNB Nirmal Kumar, MD, DM Suresh Kumar, MD, DM (N)	K. Manjula Rani, MSc. M. Sowjanya Reddy, BSc K. Preethi, BSc	Hyderabad	Gurunanak CARE Hospital (3)

John Jose, MD Vinoi George David, MD (N)	Anu Tharini Anandaroop Lahiri	Vellore	Christian Medical College (3)
Gurpreet S. Wander, MD Rohit Tandon, MD Sarju Ralhan, M.Ch (CTVS) Naved Aslam, DM Abhishek Goyal, DM Vikas Makkar, DM (N)	Baljeet Kaur, MSc (Biotechnology) Sonika Gupta, MBA, B. Pharmacy	Ludhiana	Hero DMC Heart Institute, Dayanand Medical College and Hospital (2)
S.K. Dwivedi, DM V.S. Narain, DM Sharad Chandra, DM	Roma Tewari, PG Meenakshi Mishra, PG Shivali Patel Suman Singh, PG	Lucknow	King George's Medical University, Department of Cardiology (2)
Johann Christopher, MD Praneeth Polamuri, MD Vikranth Reddy, MD, DNB (N)	Sowjanya Reddy Manjula Rani	Hyderabad	CARE Hospital (1)
Upendra Kaul, MD	Priyadarshani Arambam Bebek Singh	New Delhi	Batra Hospital and Medical Research Centre (BHMRC) (1)

### China (70)

Lead Country Cardiologist

Lixin Jiang, MD, PhD

Lead Country Nephrologists

Xuemei Li, MD

Hong Cheng, MD Weijing Bian, MD Guoqin Wang, MD	Jing Dong, MD Xiaoyi Xu, MD	Beijing	Beijing Anzhen Hospital (24)
Jiyan Chen, MD Zhiming Ye, MD (N)	Haojian Dong Peiyu He Chunli Xia Junqing Yang Qi Zhong	Guangzhou	Guangdong General Hospital (15)
Xin Fu, MD Zhangsuo Liu, MD (N)	Dan Gao Dengke Jiang Ran Leng Xutong Wang Qianqian Yuan Lili Zhang	Zhengzhou	The First Affiliated Hospital of Zhengzhou University (13)
Shuyang Zhang, MD, PhD Zhenyu Liu, MD Xuemei Li, MD (N)	Ying Wang, MD Yechen Han, MM Lihong Xu, RN Zhenyu Liu Gang Chen, MD Rongrong Hu	Beijing	Peking Union Medical College Hospital (11)
Yitong Ma, MD (N) Yining Yang, MD	Dongze Li Xiaomei Li Xiang Ma Zixiang Yu Qian Zhao	Urumqi	First Affiliated Hospital of Xinjiang Medical University (7)

### Italy (62)

Lead Country Cardiologist

Francesco Orso, MD

Carlo Briguori, MD	Francesca De Micco	Naples	Clinica Mediterranea (52)
Gian Piero Perna, MD Marco Marini, MD Gabriele Gabrielli, MD	Francesca Pietrucci, PhD	Ancona	Cardiology and CCU - Ospedali Riuniti Ancona (7)

Mario D'arezzo, MD (N)			
Marco Sicuro, MD	Gianpiero Leone, MD	Aosta	Ospedale Regionale Umberto Parini (1)
Valentina Pellu, MD (N)	Francesco Pisano, MD Cristina Bare, BSc		
Paolo Calabro, MD	Fabio Fimiani	Napoli	AORN Dei Colli "V. Monaldi" UOC Cardiologia Università della Campania "L. Vanvitelli" (1)
Tiziana Formisano, MD			
Piero Tassinario, MD (N)			
Marcello Galvani, MD	Chiara Attanasio	Forli	Ospedale "G.B. Morgagni – L. Pierantoni" Forli (AUSL della Romagna) (1)
Filippo Ottani, MD			
Marco De Fabritis, MD (N)			

### Mexico (30)

Lead Country Cardiologist

Jorge Escobedo, MD

Lead Country Nephrologist

Magdalena Madero, MD

Juan Manuel López Quijano, MD, MSc	Teresa Delgadillo	San Luis Potosi	Hospital Central Dr. Ignacio Morones Prieto (16)
Alejandro Chevaile Ramos, MD (N)			
Jorge Carrillo Calvillo, MD			
Jorge Escobedo, MD	Ramon de Jesús-Pérez, RN	Benito Juarez	Instituto Mexicano del Seguro Social (10)
Rubén Baleón-Espinosa, MD			
Arturo S Campos-Santaolalla, MD			
Elihú Durán-Cortés, MD			
José M Flores-Palacios, MD			
Andrés García-Rincón, MD			
Moisés Jiménez-Santos, MD			
Joaquín V Peñafiel, MD			
José A Ortega-Ramírez, MD			
Aquiles Valdespino-Estrada, MD			
Erick Alexánderson Rosas, MD	María Pérez García	Mexico City	Instituto Nacional de Cardiología "Ignacio Chávez" (2)
Magdalena Madero Rovalo, DM (N)			
Guillermo Garcia-Garcia (N)	Lorena Lopez, BS	Guadalajara	Hospital Civil de Guadalajara Fray Antonio Alcalde (2)
Jonathan S. Chavez-Iñiguez			

### Canada (24)

Lead Country Cardiologists

Akshay Bagai, MD, MHS

Kevin R. Bainey, MD, MSc

Lead Country Nephrologist

Ron Wald, MDCM, MPH

Kevin R. Bainey, MD, MSc	Norma Hogg, RN	Edmonton, AB	University of Alberta (15)
Neesh Pannu, MD (N)	Suzanne Welsh, RN		
Asim N. Cheema, MD, PhD	Khrystyna Kushniriuk, HBSc, MD	Toronto, ON	St. Michael's Hospital (3)
Akshay Bagai, MD, MHS	Mohammed Hussain		
Ron Wald, MDCM, MPH (N)	Olugbenga Bello		
Shaun Goodman, MD, MSc			
John Joseph Graham, MRCP, MB ChB, BSc			
Mark Peterson, MD, FRCSC, PhD			
Chi-Ming Chow, MD, CM, MSc			
Beth Abramson, MD, MSc			
Graham Wong, MD	Jackie Chow, BSN	Vancouver, BC	Vancouver General Hospital (2)
Kenneth Gin, MD	Andrew Starovoytov, MD		

Christopher Fordyce, MD	Naomi Uchida, BSN Ngairé Meadows		
Ariel Diaz, MD	Isabelle Roy, RN	Trois-Rivieres, QC	Centre Hospitalier de Regional Trois-Rivieres (1)
Philippe Rheault, MD	Patricia Alarie, RN		
Alejandro Gisbert, MD	Linda Arcand, RN		
Alain Raymond, MD	Estelle Montpetit		
Yanek Pépin-Dubois, MD			
Miguel Barrero, MD			
Carl-Éric Gagné, MD			
Mark Garand, MD			
Ricardo Costa, MD			
Catherine Lemay, MD			
Ying Tung Sia, MD			
Pierre Gervais, MD			
Alain Rheault, MD			
Pallav Garg, MBBS, MSc	Sandy Carr, RN	London, ON	London Health Sciences Centre (1)
Matthew Weir, MD (N)	Catherine Bone, RN		
Amar Uxa, MD	Nadia Asif	Toronto, ON	University Health Network (1)
Michael Farkouh, MD			
Christopher Chan, MD (N)	Suzana Tavares		
Philippe Généreux, MD	Chantale Mercure, RN	Montréal, QC	Centre Intégré Universitaire De Santé et de Services Sociaux du Nord de l'île de Montréal /Hôpital du Scaré-Cœur de Montréal (1)
Jean Diodati, MD			
François Madore, MD (N)			

#### Singapore (14)

Lead Country Cardiologist  
Kian-Keong Poh, MD  
Lead Country Nephrologist  
Titus Lau, MD

Kian-Keong Poh, MD		Singapore	National University Heart Center Singapore (11)
Ping Chai, MD			
Titus Lau, MD (N)			
Joshua P. Loh, MD			
Edgar L. Tay, MD			
Kristine Teoh, MD	Sik-Yin V Tan, BSc		
Lynette L. Teo, MD	Winnie C Sia, BSc		
Ching-Ching Ong, MD	Audrey W Leong, BSc		
Raymond C. Wong, MD			
Poay-Huan Loh, MD			
Theodoros Kofidis, MD			
David Foo, MBBS	Li Hai Yan, RN	Singapore	Tan Tock Seng Hospital (2)
Jason Loh Kwok Kong, MD			
Ching Min Er, MD			
Fahim Haider Jafary, MD			
Tracy Tan, MD (N)			
Terrance Chua, MD	Nasrul Ismail	Singapore	National Heart Centre Singapore (1)
	Min Tun Kyaw		
	Deborah Yip		

#### Brazil (13)

Lead Country Cardiologist  
Renato D. Lopes, MD, PhD  
Lead Country Nephrologists  
Maria Eugenia Canziani, MD (Lead)

Sergio Draibe, MD (Co-Lead)

Whady Hueb, MD Eduardo Gomes Lima, MD Paulo Cury Rezende, MD Expedito Eustáquio Ribeiro Silva, MD Alexandre Ciappina Hueb, MD	Myrthes Emy Takiuti, RN	Sao Paulo	Heart Institute (InCor) University of São Paulo (6)
Marianna D. A. Dracoulakis, MD, PhD Rodolfo G. S. D Lima, MD Paulo Novis Rocha, MD (N)	Natalia S Oliveira, RN	Salvador	Hospital da Bahia (5)
Alexandre Schaan de Quadros, MD Renato Abdala Karam Kalil, MD José Luiz da Costa Vieira, MD Gabriel Grossmann, MD Pedro Piccaro de Oliveira, MD Leonardo Bridi, MD Simone Savaris, MD Renato George Eick, MD (N)	Aline Peixoto Deiro Alicia Manica Muller Maria Antonieta Pereira de Moraes Bruna Maria Ascoli Sílvia Zottis Poletti	Porto Alegre	Instituto de Cardiologia de Porto Alegre (1)
Paola Emanuela Poggio Smanio, MD, PhD Leda Lotaif, MD, PhD (N)	Leonardo Pizzol Caetano, PhD	São Paulo	Instituto Dante Pazzanese de Cardiologia (1)

#### Hungary (12)

Lead Country Cardiologist

Andras Vertes, MD

Lead Country Nephrologist

Peter Voros, MD

Andras Vertes, MD Peter Voros, MD (N)	Judit Sebo, MD Zoltan Davidovits, MD Laszlone Matics	Budapest	Eszszk- Szent Istvan Hospital (10)
Bela Merkely, MD, PhD, DSc Mihaly Tapolyai, MD (N)	Andrea Bartykowszki, MD Pal Maurovich-Horvat, MD, PhD, MPH	Budapest	Heart and Vascular Center, Semmelweis University (1)
Albert Varga, MD, PhD Timea Boros, MD (N)	Gergely Ágoston, MD	Szeged	University of Szeged (1)

#### Lithuania (12)

Lead Country Cardiologist

Jelena Celutkiene, MD

Lead Country Nephrologist

Marius Miglinas, MD, PhD

Aleksandras Laucevicius, MD Jelena Celutkiene, MD Marius Miglinas, MD (N)	Agne Juceviciene, MD Irma Kalibataite-Rutkauskiene, MD Laura Keinaite Monika Laukyte Gelmina Mikolaitiene Akvile Smigelskaite, MD Ilona Tamasauskiene, MD Agne Urboniene, MD	Vilnius	Vilnius University Hospital Santariskes Clinic (12)
---	---	---------	--

#### Portugal (10)

Lead Country Cardiologist

Ruben Ramos, MD

Lead Country Nephrologist

Fernando Nolasco, PhD

Ruben Ramos, MD Duarte Cacela, MD Ana Santana, MD Antonio Fiarresga, MD	Mafalda Selas Filipa Silva Cláudia Freixo	Lisbon	Hospital de Santa Marta / Hospital Curry Cabral (8)
--	---	--------	--

Lidia Sousa, MD  
 Hugo Marques, MD  
 Lino Patricio, MD  
 Luis Bernardes, MD  
 Pedro Rio, MD  
 Ramiro Carvalho, MD  
 Rui Ferreira, MD  
 Tiago Silva, MD  
 Ines Rodrigues, MD  
 Pedro Modas, MD  
 Guilherme Portugal, MD  
 Jose Fragata, MD  
 Marina Vieira, MD  
 Fernando Nolasco, PhD (N)  
 Fernando Caeiro, MD

Pedro Farto e Abreu, MD	Maura Carina Nédio, BSc	Amadora	Hospital Professor Doutor Fernando Fonseca, EPE (1)
Sérgio Bravo Baptista, MD, PhD			
Miguel Borges Santos, MD			
Patricia Carrilho, MD (N)			
Fausto J. Pinto, PhD	Inês Zimbarra Cabrita, PhD	Lisbon	Santa Maria University Hospital, Cardiology Department, CHLN (1)
Miguel Nobre Menezes, MD	Andreia Rocha, MSc		
Guilhermina Cantinho Lopes, MD	Francisca Patuleia Figueiras, PhD		
Ana Gomes Almeida, PhD	Andreia Coelho, BSc		
Pedro Canas Silva, MD	Marta Capinha		
Angelo Nobre, MD	Maria Inês Caetano		
Ana Rita Francisco, MD	Susana Silva		
Jose Lopes, MD (N)			

**Spain (9)**

Lead Country Cardiologist  
 Almudena Castro, MD  
 Lead Country Nephrologist  
 Rafael Selgas, MD

Jose Lopez-Sendon, MD, PhD	Virginia Fernández-Figares, Pharm	Madrid	Hospital La Paz. IdiPaz (6)
Almudena Castro, MD			
Elena Refoyo Salicio, MD			
Gabriela Guzman, MD			
Gabriel Galeote, MD			
Silvia Valbuena, MD			
Rafael Selgas, MD (N)			
Jesús Peteiro, MD, PhD	Moisés Blanco-Calvo, PhD	A Coruna	Complejo Hospitalario Universitario A Coruña (CHUAC) Sergas, Department of Cardiology. INIBIC A Coruña. CIBER-CV. Universidad de A Coruña, Spain (2)
María Dolores Martínez-Ruiz, MD	Encarnación Alonso-Álvarez, BSc		
Ruth Pérez-Fernández, MD	Paula García-González, BSc		
José J Cuenca-Castillo, MD			
Xacobe Flores-Ríos, MD			
Óscar Prada-Delgado, MD			
Gonzalo Barge-Caballero, MD			
Miguel Perez Fontan, MD (N)			
Vicente Miro, MD	Begoña Igual, MD	Valencia	Hospital Universitario y Politecnico La Fe (1)
Jose L Diez, MD			
Pilar Calvillo, MD			
Julio Hernandez Jaras, MD (N)			

**Argentina (6)**

Lead Country Cardiologist

Luis Guzman, MD  
Lead Country Nephrologist  
Rafael Maldonado, MD

Mariano Rubio, MD Rafael Maldonado, MD (N)	Graciela Scaro, MD	Cordoba	Clínica Privada Vélez Sarsfield (5)
---	--------------------	---------	-------------------------------------

Julio César Figal, MD Oscar Méndiz, MD Claudia Cortés, MD Roberto René Favalaro, MD Pablo Raffaele, MD (N)	Matías Nicolás Mungo	Ciudad Autónoma de Buenos Aires	Fundación Favalaro (1)
--	----------------------	---------------------------------	------------------------

**France (6)**

Lead Country Cardiologist  
Emmanuel Sorbets, MD, PhD  
Lead Country Nephrologist  
Eric Daugas, MD, PhD

Philippe Gabriel Steg, MD Jean-Michel Juliard, MD Eric Daugas, MD, PhD (N) Emmanuel Sorbets, MD, PhD	Helene Abergel, MSc Axelle Fuentes, MSc	Paris	Bichat Hospital (4)
---	--	-------	---------------------

Christophe Thuaire, MD Téodora Dutoiu, MD Catherine Albert, MD (N) Bougrida Hammouche, MD (N)	Corine Thobois, RN Emilie Tachot, RN Christophe Laure, RN Christel Vassaliere, RN	Chartres	C.H. Louis Pasteur (2)
--	--	----------	------------------------

**New Zealand (6)**

Lead Country Cardiologist  
Gerard Patrick Devlin, MD  
Lead Country Nephrologist  
Peter Sizeland, MD

Gerard Patrick Devlin, MD Raewyn Fisher, MD Peter Sizeland, MD (N)	Liz Low, RN Jayne Scales, RN Kirsty Abercrombie, RN	Hamilton	Waikato Hospital (6)
--	---	----------	----------------------

**United Kingdom (5)**

Lead Country Nephrologist  
David Wheeler, MD

Roxy Senior, MBBS, MD, DM Ahmed Elghamaz, MB BCH Sothinathan Gurunathan, MBChB Nikolaos Karogiannis, MBBS Benoy N Shah, MD, MBBS, BSc (Hons) Richard HJ Trimlett, MBBS, CCST Michael B Rubens, LRCP, MRCS, MBBS, DMRD Edward D Nicol, MD, BMedSci, MBBS, DTM&H Tarun K Mittal, MD Neill Duncan, MD (N)	Grace M. Young, MSc, BSc (Hons) Christopher Kinsey Raisa Kavalakkat, MSc, BSc, RN Jo Evans, RN Ikraam Hassan, RN Emma Howard, MSc, BSc Ann Banfield, BSc, RN Reinette Hampson, BSc (Hons), BA (Hons) Rory Collins, BSc Anastasia Vamvakidou, MBBS, MRCP	Harrow	Northwick Park Hospital Harrow/ Royal Brompton Hospital London (2)
---	--	--------	--

Reto Andreas Gamma, MBBS Sumith Abeygunasekara, MD (N)	Sarah Williams, RN Kim Holland, RN Karen Swan, RN	Chelmsford	Broomfield Hospital (1)
---	---	------------	-------------------------

Khaled Alfakih, MBBS, MD Jonathan Byrne, PhD	Abigail Knighton, BSc., PG Dip. Katherine Martin, RGN, Dip. N, MSc	London	King's College NHS Foundation Hospital (1)
---	---	--------	--



Ian Webb, PhD, MA (N)

---

Dwayne S. G. Conway, MD	Judith Wright Donna Exley	Wakefield	Pinderfields Hospital (1)
-------------------------	------------------------------	-----------	---------------------------

---

**Serbia (5)**

Lead Country Cardiologist  
Branko D. Beleslin, MD, PhD  
Lead Country Cardiologist  
Sanja Simic Ogrizovic, MD

Branko D. Beleslin, MD, PhD		Belgrade	Faculty of Medicine, University of Belgrade; Cardiology Clinic, Clinical Center of Serbia (5)
Nikola N. Boskovic, MD	Ana D. Djordjevic-Dikic, MD, PhD		
Marija T. Petrovic, MD	Vojislav L. Giga, MD, PhD		
Milan R. Dobric, MD	Jelena J. Stepanovic, MD, PhD		
Zeljko Z. Markovic, MD, PhD			
Ana S. Mladenovic, MD, PhD			
Sanja Ogrizovic, MD (N)			

**Australia (4)**

Lead Country Cardiologist  
Joseph B. Selvanayagam, MBBS (Hons), Dphil  
Lead Country Cardiologist  
Magid Fahim, MBChB, FRACP

Joseph B. Selvanayagam, MBBS(Hons), DPhil	Sau Lee, PhD	Adelaide	Flinders Medical Centre and College of Medicine and Public Health (4)
Majo X. Joseph, MBBS	Prince Thomas, RN		
Jonathan M Gleadle, BM Dphil (N)			

**Austria (4)**

Lead Country Cardiologist  
Herwig Schuchlenz

Herwig Schuchlenz, MD	Gudrun Steinmaurer	Graz	LKH Graz West Austria (3)
Stefan Weikl, MD			

---

Irene Marthe Lang, MD	Max-Paul Winter, MD	Vienna	Medical University of Vienna, Department of Cardiology (1)
-----------------------	---------------------	--------	---

**Belgium (4)**

Lead Country Nephrologist  
Kathleen Claes, MD, PhD

Kaatje Goetschalckx, MD	Valerie Robesyn	Leuven	University Hospital Leuven (3)
Frans Van de Werf, PhD, MD			
Kathleen Claes, MD, PhD (N)			

---

Christiaan Vrints, MD	Nathalie Brosens	Edegem	Universitair Ziekenhuis Antwerpen (1)
Bharati Shivalkar, MD			
Amaryllis Van Craenenbroeck, MD (N)			

**Israel (4)**

Yaron Arbel, MD	Daniela Puzhevsky	Tel Aviv	Tel Aviv Sourasky Medical Center (4)
Doron Schwartz, MD (N)	Miri Revivo		
Orit Kliuk, MD			

**Egypt (3)**

Magdy Abdelhamid, MD	Ahmed Talaat, MD	Cairo	Cairo University (3)
----------------------	------------------	-------	----------------------

	Ahmed Kamal, MsC Hossam Mahrous, MD Mohamed Adel , MsC Hussien El Fishawy, MD (N)			
<b>United Arab Emirates (2)</b>	Wael A. Almahmeed, MD Mohamed Hassan, MD (N) Seema Nour, MD Abdallah M. Abdallah, MD Salamah Alfalahi, MD	Virendra Misra, MD	Abu Dhabi	Sheikh Khalifa Medical City (2)
<b>Germany (1)</b> Lead Country Cardiologist Rolf Doerr, MD	Rolf Doerr, MD Gregor Simonis, MD, PhD Juergen Stumpf, MD Clemens T. Kadalie, MD Klaus Matschke, MD, PhD Doreen Reimann, MD (N)	Karin Ploetze, PhD Franziska Guenther Kerstin Bonin Kerstin Mikes, RN Katharina Knaut	Dresden	Praxisklinik Herz und Gefaesse (1)
<b>Macedonia (1)</b>	Sasko Kedev, MD, PhD Irena Peovska Mitevaska, MD, PhD Elizabeta Srbinovska Kostovska, MD, PhD Hristo Pejkov, MD, PhD Zvezdana Petronijevic, MD (N) Liljana Tozija, MD (N)		Skopje	University Clinic of Cardiology (1)
<b>Netherlands (1)</b>	Robert K. Riezebos, MD, PhD Pouneh Samadi, MD Elise van Dongen, MD Sander R. Niehe, MD Yves Smets, MD (N)	Jeannette, J. M. Schoep, RN Elisabeth, M. Janzen, RN	Amsterdam	Cardio Research Hartcentrum OLVG (1)
<b>Romania (1)</b>	Calin Pop, MD, PhD Matei Claudia, MD, PhD Florina Chereches, MD (N)		Bucharest	Emergency County Hospital Baia Mare (1)
<b>Sweden (1)</b> Lead Country Cardiologist Claes Held, MD, PhD	Claes Held, MD, PhD Axel Åkerblom, MD, PhD Inga Soveri, MD, PhD (N)	Christina Björklund, RN Maria Andreasson, RN	Uppsala	Uppsala University (1)

\* (N) = Nephrologist