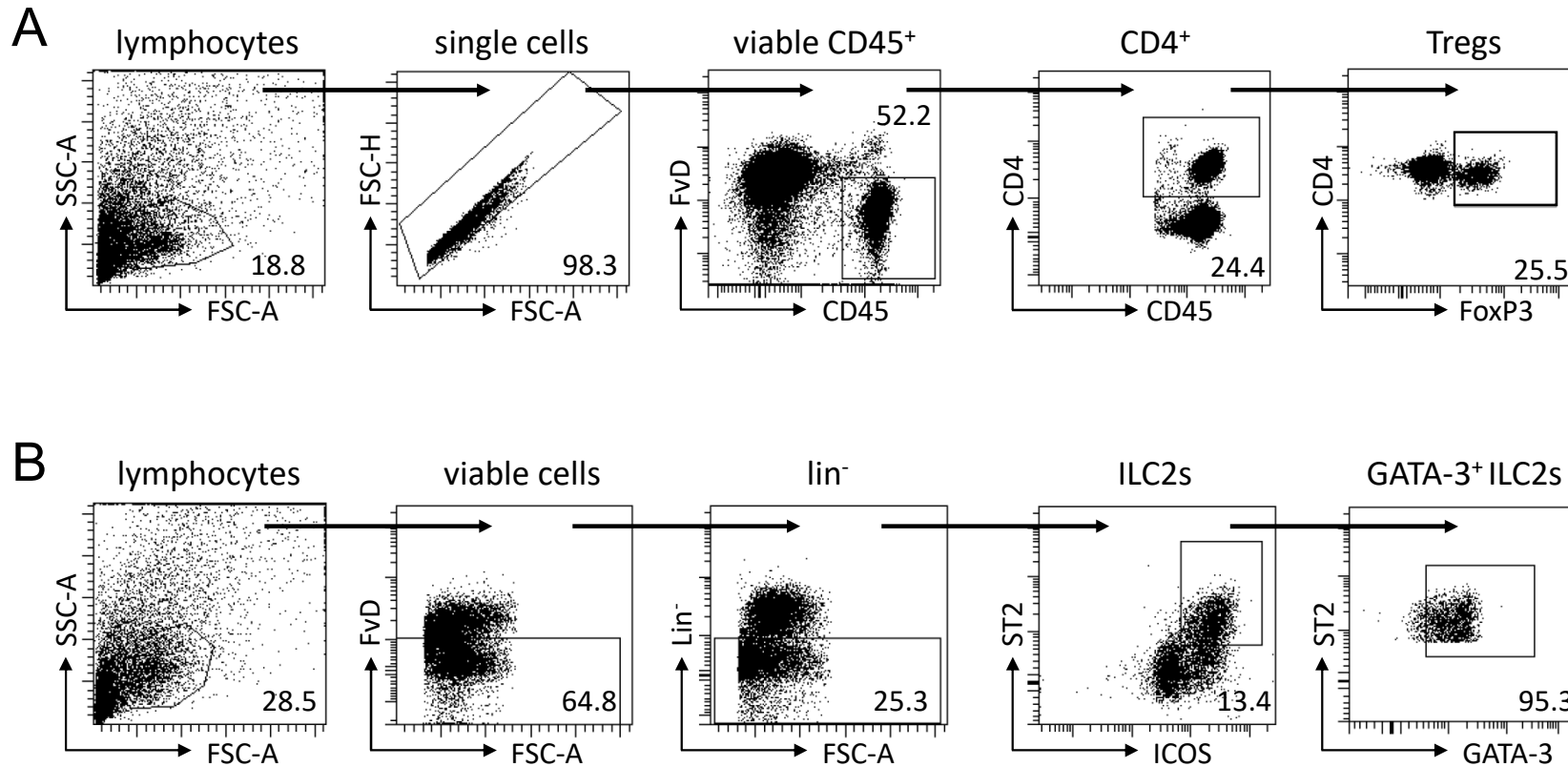


## Supplementary Figure 1



**Supplementary Fig. 1.** Gating strategy of regulatory T cells and type 2 innate lymphoid cells. To induce intestinal inflammation, BALB/c mice were given 4% of DSS for six consecutive days, followed by one day of normal drinking water. Mice were injected i.p. either with PBS or with IL-33 on day 0, 2 and 5. Immune cells were isolated from the colonic lamina propria on day 7 and analyzed by flow cytometry to distinguish (A) CD4<sup>+</sup>Foxp3<sup>+</sup> regulatory T cells (Tregs), or (B) lineage<sup>-</sup>ICOS<sup>+</sup>ST2<sup>+</sup> type 2 innate lymphoid cells (ILC2s). Representative dot plots show the gating strategy of Tregs and ILC2s, and the expression of GATA-3 among ILC2s from the colon of an IL-33 treated DSS mouse.