

Supplementary Material

Supplementary Table1: Parameters of echocardiography:

		Control(n=7)	QL(n=7)	STZ(n=8)	STZ+QL(n=7)
MV E/A Ratio		1.98±0.18	2.02±0.48	1.24±0.28 **	1.91±0.29 ##
MV E	mm/s	615.34±65.65	615.89±74.23	381.28±79.99 **	448.51±109.00
MV A	mm/s	313.00±46.48	318.09±67.13	314.77±69.83	241.37±67.50
Ejection fraction	%	48.19±3.23	49.12±4.15	42.62±6.19	45.19±5.06
Fractional shortening	%	24.01±1.90	24.54±2.53	20.52±3.41	22.06±3.00
LVPW s	mm	0.95±0.11	0.81±0.11	0.69±0.15**	0.79±0.13
LVPW d	mm	0.70±0.11	0.62±0.08	0.55±0.14	0.58±0.12
LVID s	mm	3.15±0.14	3.01±0.20	2.89±0.39	2.89±0.23
LVID d	mm	4.15±0.11	3.99±0.19	3.63±0.38**	3.71±0.26
LV vol s	μl	39.70±4.16	35.65±5.72	32.73±10.42	32.26±6.16
LV vol d	μl	76.50±4.56	69.87±7.89	56.28±13.58**	58.88±9.33

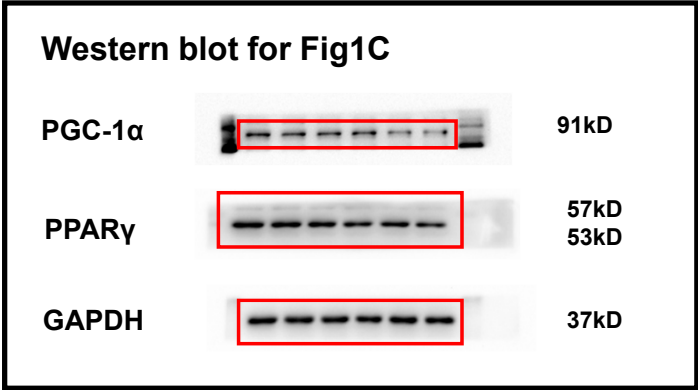
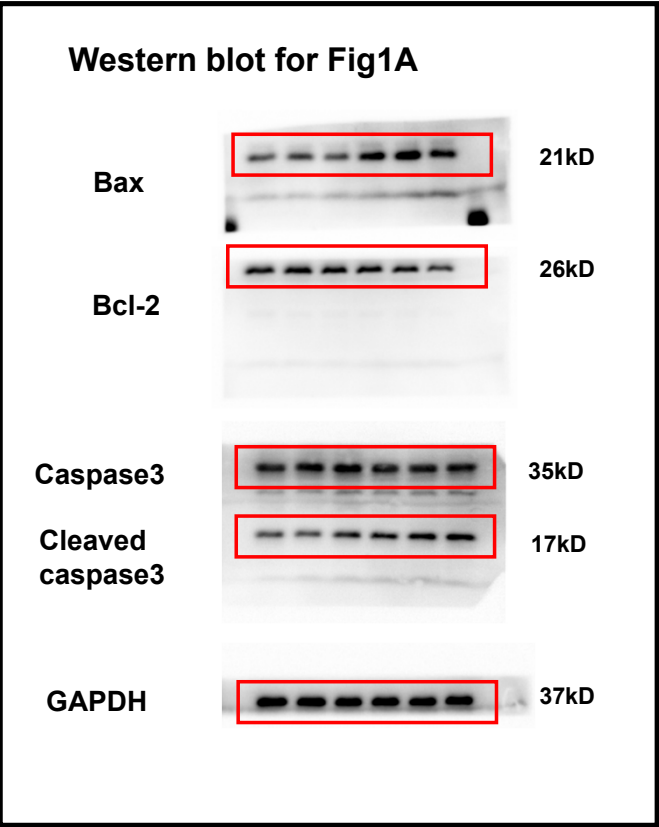
Data are presented as mean ± SD.

** , $p < 0.01$, Control group VS STZ group; ##, $p < 0.01$, STZ group VS STZ+QL group;

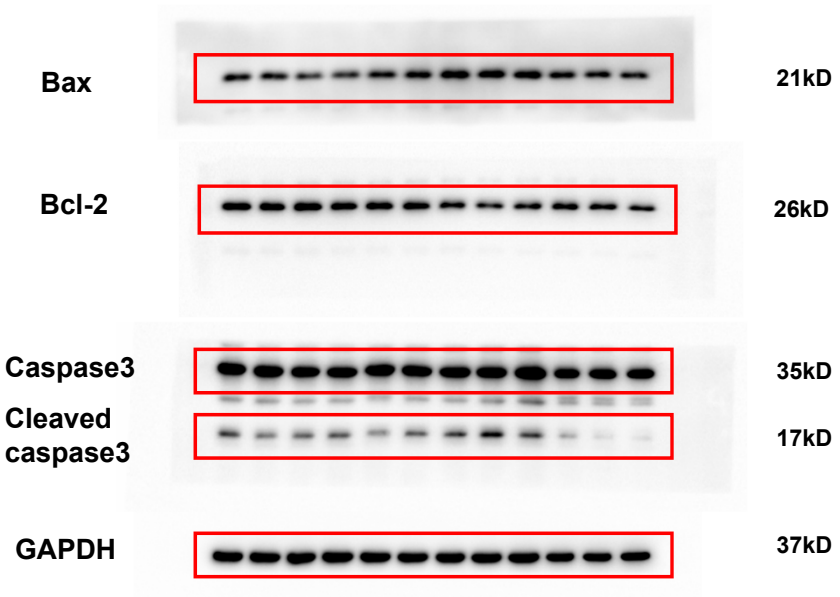
Supplementary Table2: Primers used in qRT-PCR:

Primers	Species	Forward	Reverse
<i>18S</i>	Mouse	GTAACCCGTTGAACCCCAT	CCATCCAATCGGTAGTAGCG
<i>Anp</i>	Mouse	GGAGGAGAAGATGCCGGTAGA	GCTTCCTCAGTCTGCTCACTCA
<i>Bnp</i>	Mouse	AGCTGCTGGAGCTGATAAGAGAA	GTGAGGCCTTGGTCCTTCAA
<i>Col1a1</i>	Mouse	GCTCCTCTTAGGGCCACT	CCACGTCTCACCATTGGGG
<i>Col3a1</i>	Mouse	CTGTAACATGGAACTGGGGAAA	CCATAGCTGAACTGAAAACCACC
<i>Nrf2</i>	Mouse	TCTTGGAGTAAGTCGAGAAGTGT	GTTGAACTGAGCGAAAAAGGC

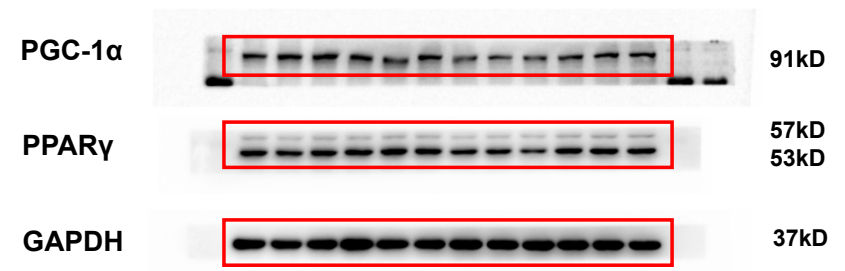
Supplementary Figure S1. Uncropped scans of Western blots



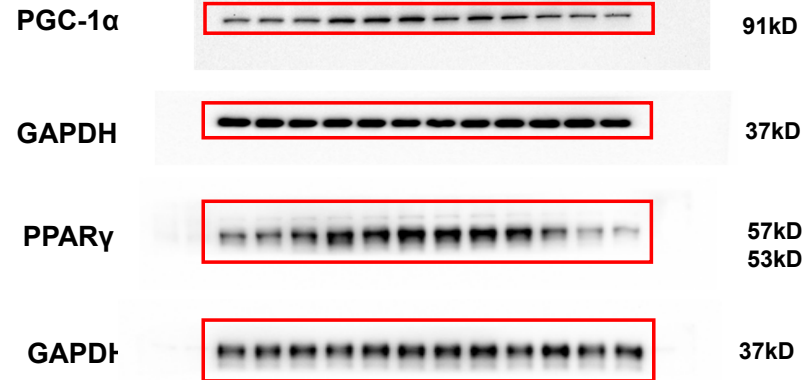
Western blot for Fig2A



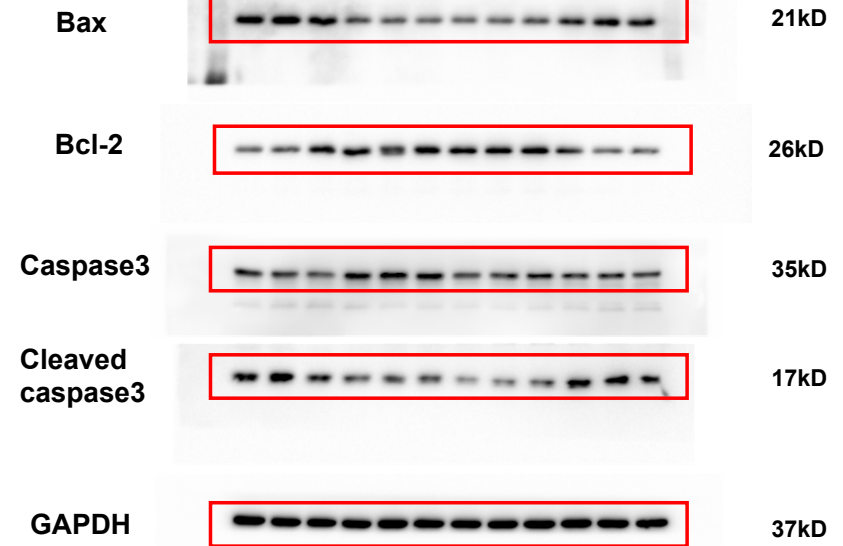
Western blot for Fig2C



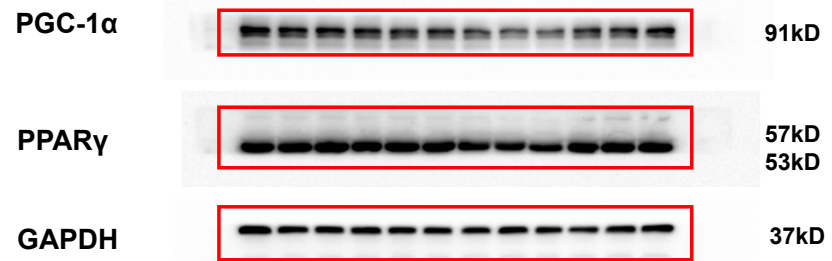
Western blot for Fig3A



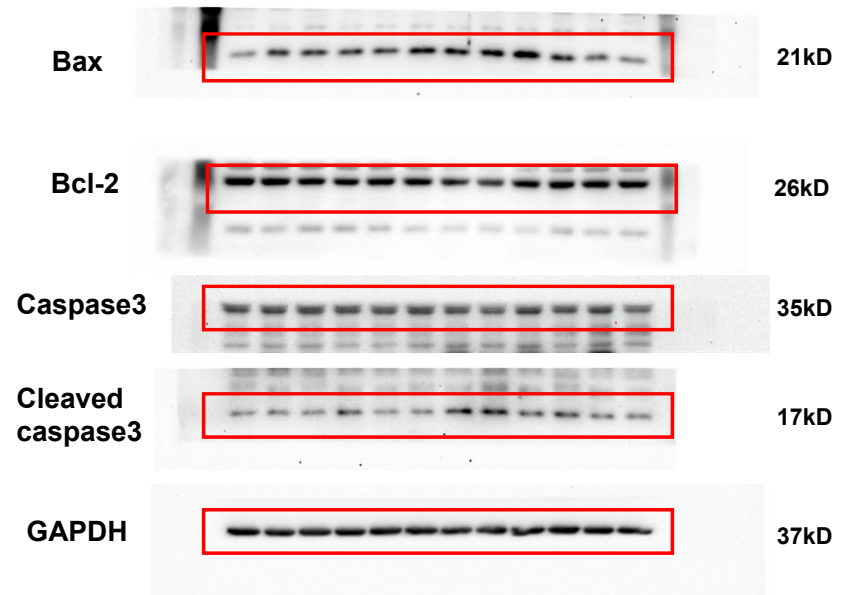
Western blot for Fig3B



Western blot for Fig5A



Western blot for Fig5B



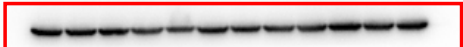
Western blot for Fig5E

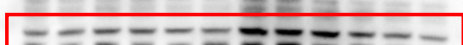
HO-1  28kD

Tubulin  55kD

Western blot for Fig5F

TNF α  21kD

Tubulin  55kD

IL-1 β  30kD

Tubulin  55kD