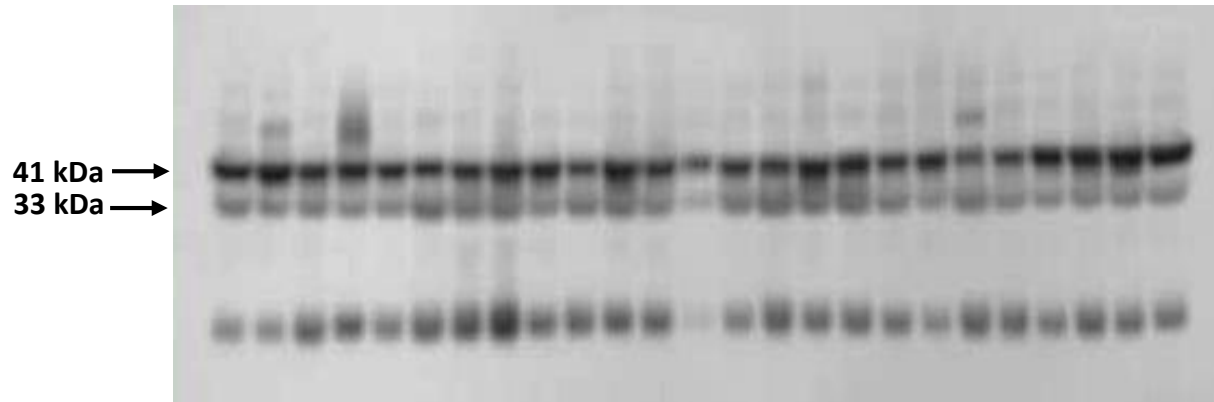
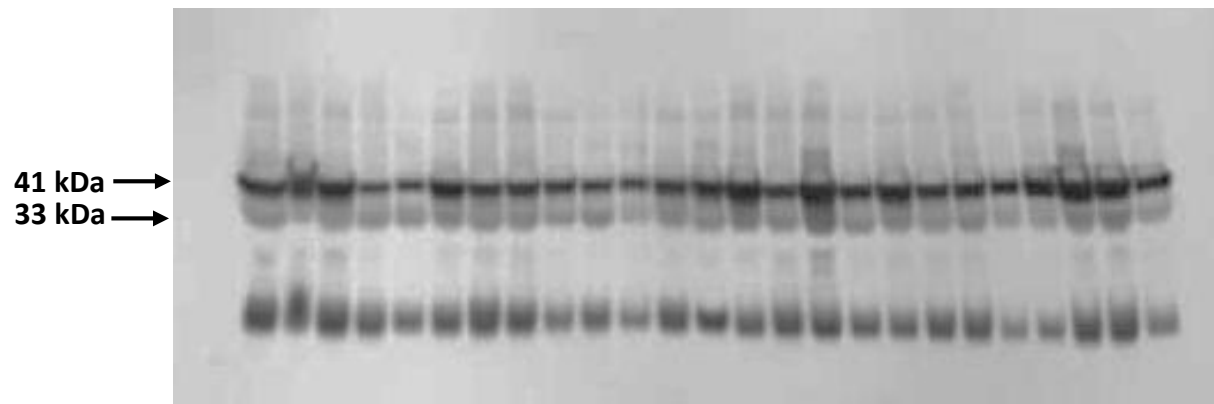


HLA-ABC

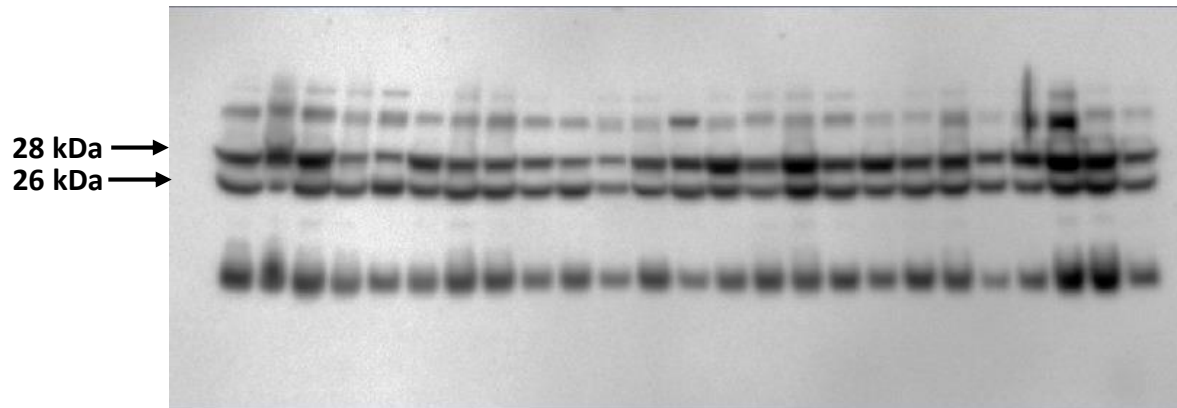


Patients with
Adenocarcinoma
(n=25)

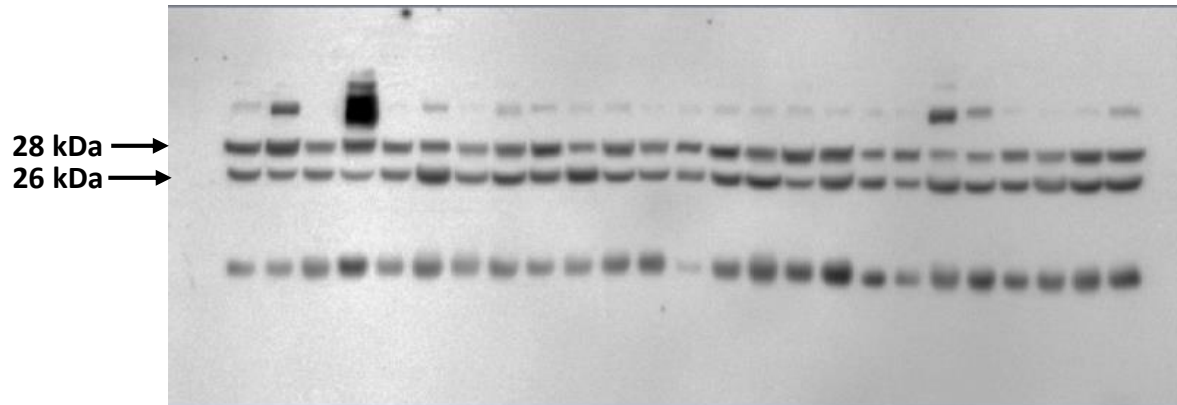


Patients with
Benign Lesions
(n=25)

HLA-DQ

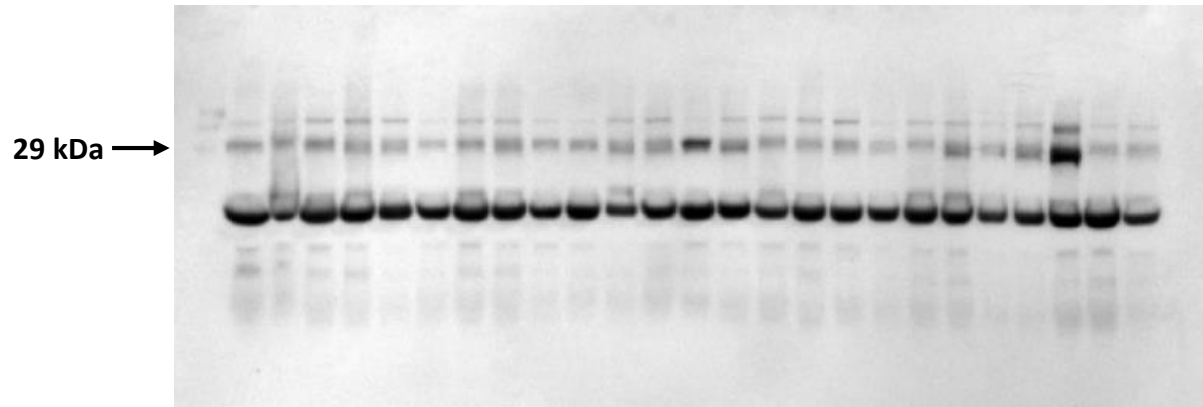


Patients with
Adenocarcinoma
(n=25)

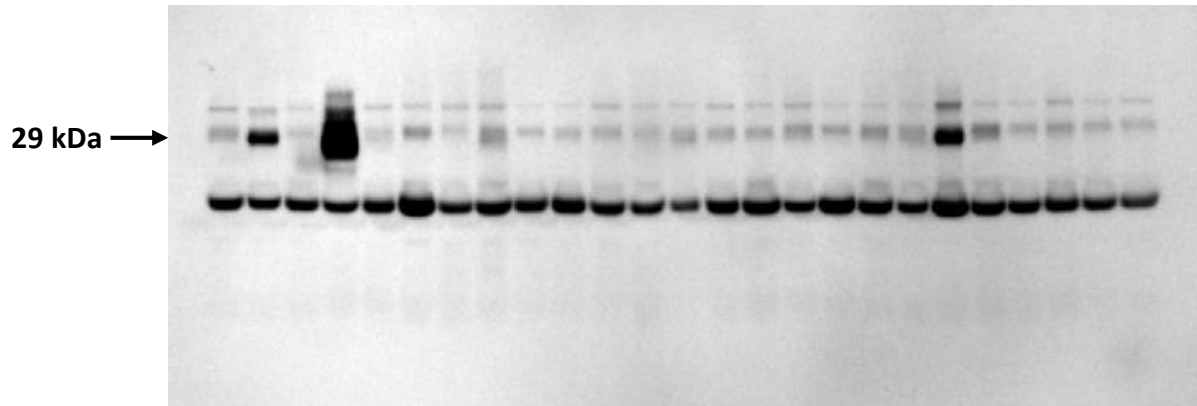


Patients with
Benign Lesions
(n=25)

HLA-DMB

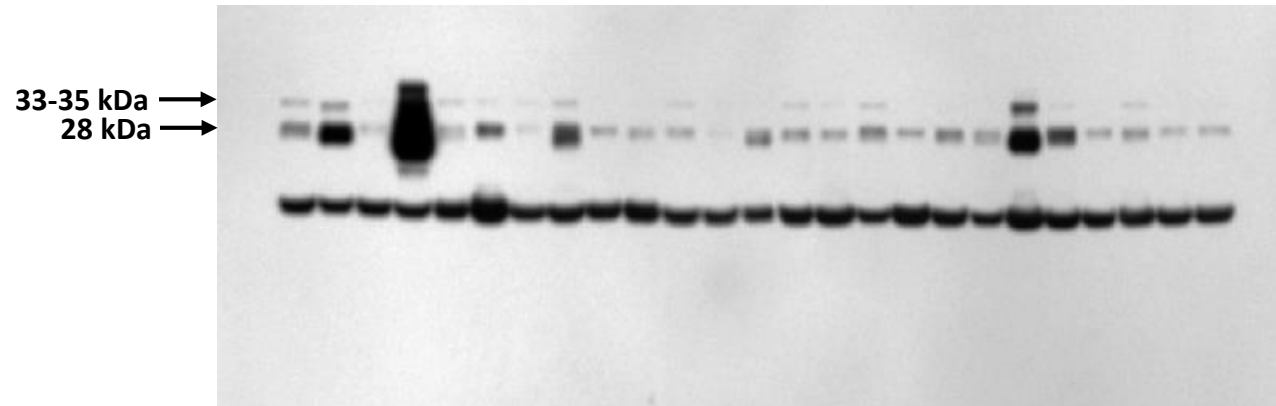


Patients with
Adenocarcinoma
(n=25)

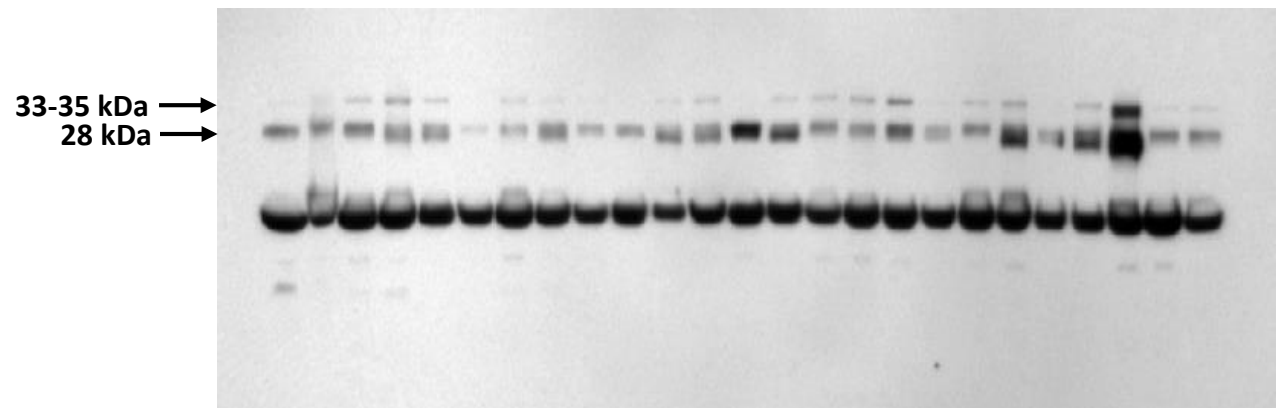


Patients with
Benign Lesions
(n=25)

HLA-DQA1



Patients with
Adenocarcinoma
(n=25)

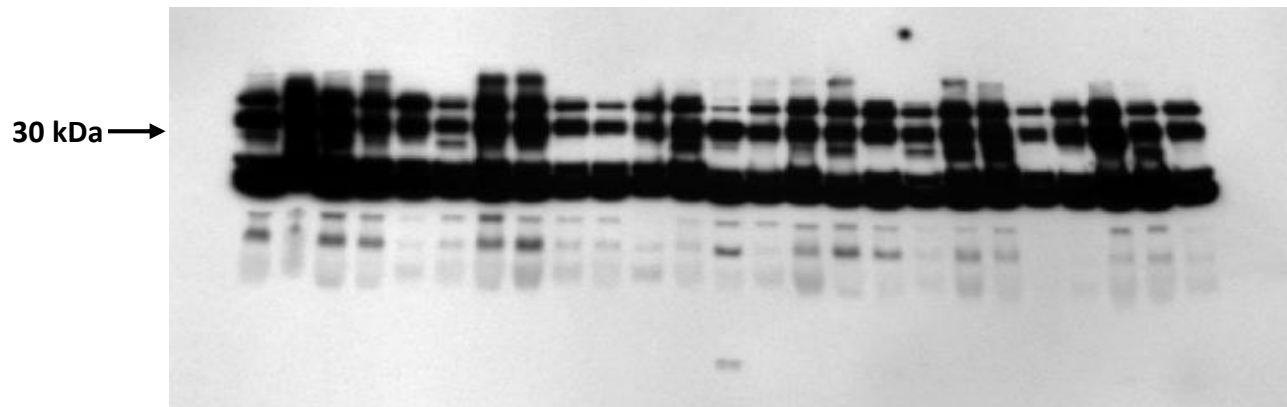


Patients with
Benign Lesions
(n=25)

HLA-DRB1



Patients with
Adenocarcinoma
(n=25)



Patients with
Benign Lesions
(n=25)