

Supplementary Materials

◆

Infant Data: Figs. 1, 2, 3 and 4 demonstrate that GFM consistently gives the best performance for all time points.

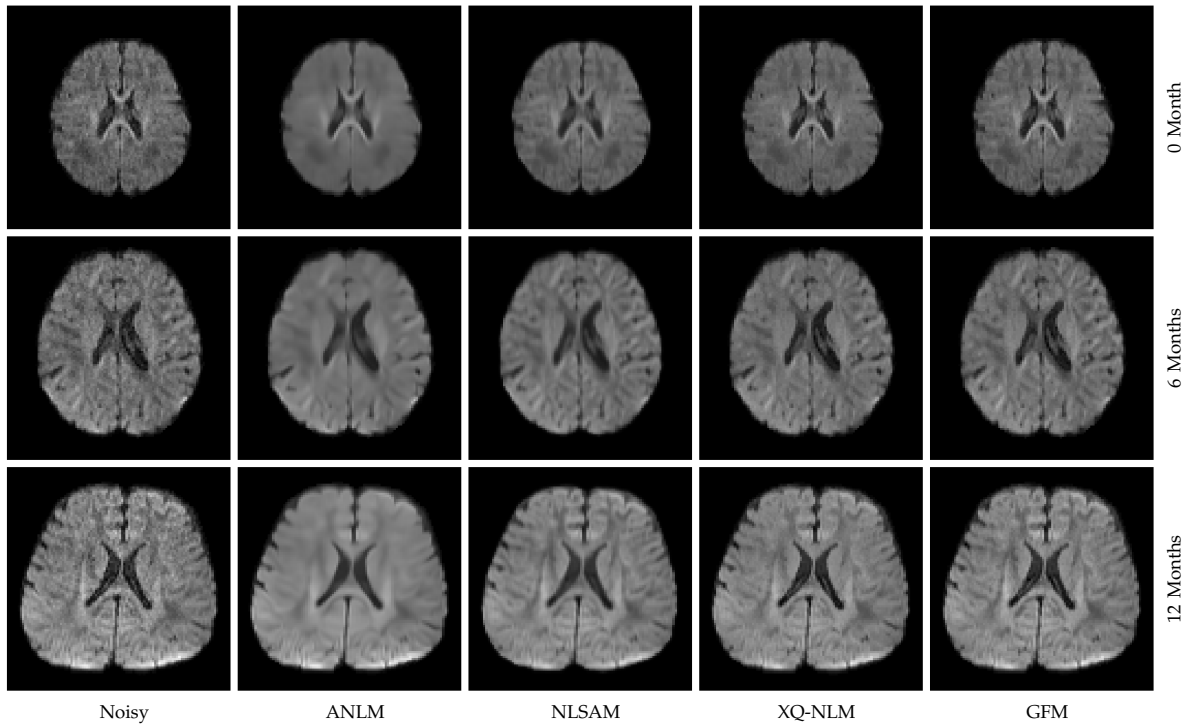


Fig. 1: Infant DW Images. Denoising of infant DW images.

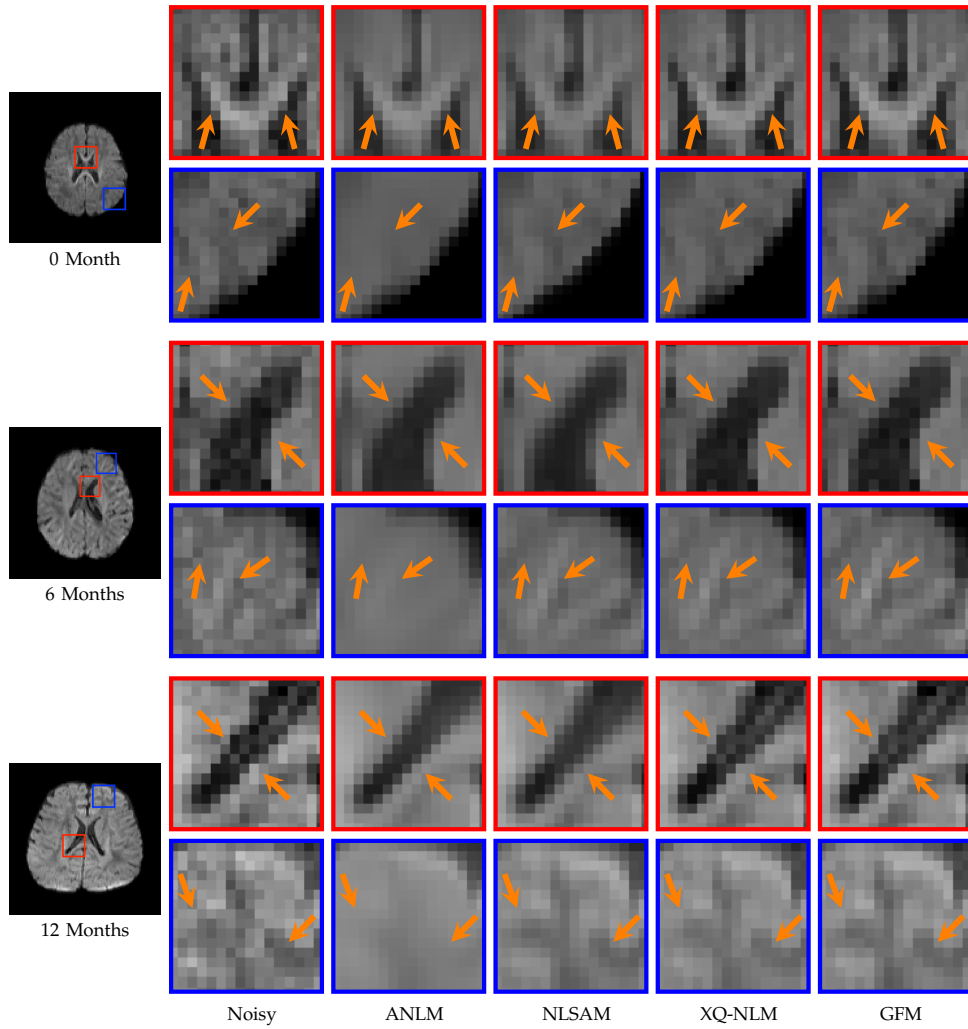


Fig. 2: DW Images. Edge preservation of various denoising algorithms.

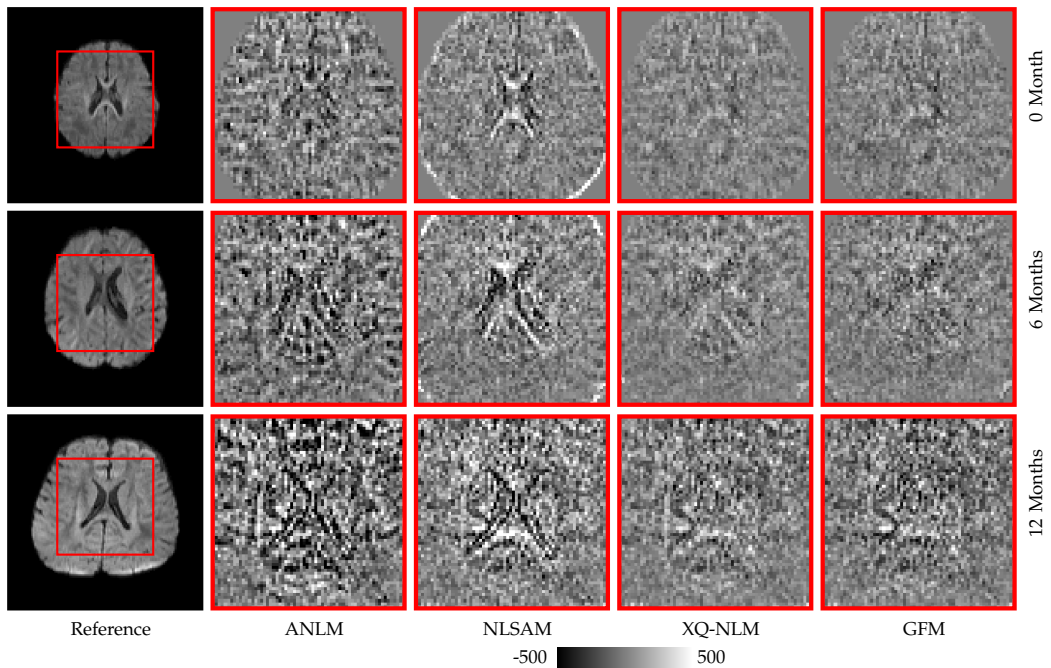


Fig. 3: Residual Maps. Evaluation of whether structural information is removed during denoising.

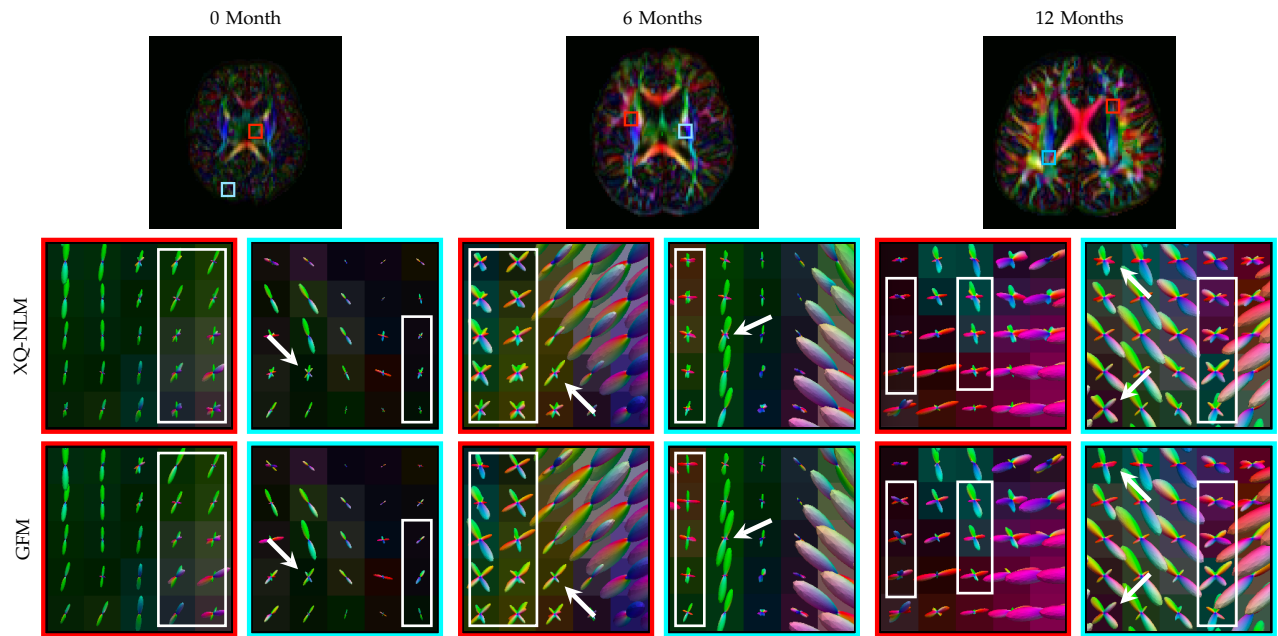


Fig. 4: Fiber ODFs. Comparison of white matter fiber ODFs given by XQ-NLM and GFM for different time points.