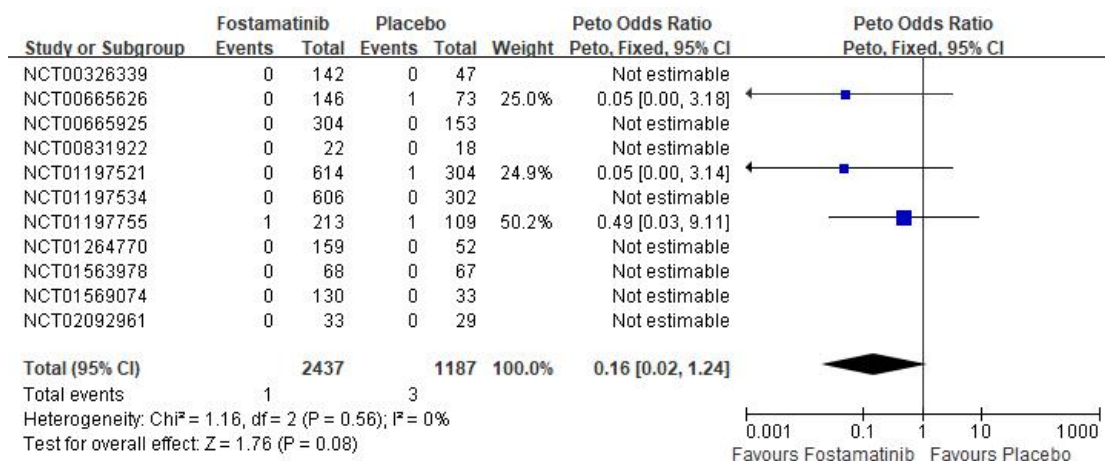


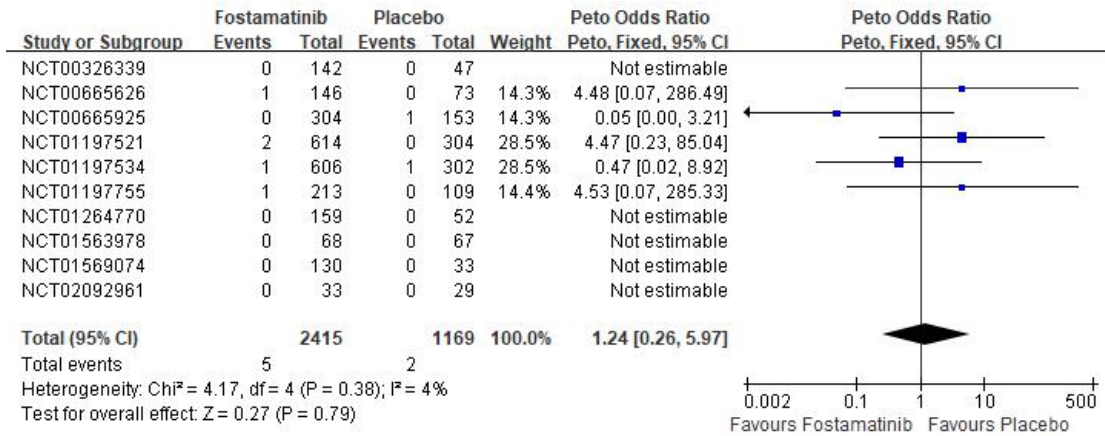
	Random sequence generation (selection bias)	Allocation concealment (selection bias)	Blinding of participants and personnel (performance bias)	Blinding of outcome assessment (detection bias)	Incomplete outcome data (attrition bias)	Selective reporting (reporting bias)
NCT00326339	?	?	+	+	+	+
NCT00665626	?	?	+	+	+	+
NCT00665925	?	+	+	+	+	+
NCT00831922	?	?	?	+	+	+
NCT01197521	+	+	+	+	+	+
NCT01197534	?	?	+	+	+	+
NCT01197755	?	?	+	+	+	+
NCT01242514	+	+	+	+	+	+
NCT01264770	?	+	+	+	+	+
NCT01563978	+	+	+	+	+	+
NCT01569074	?	?	+	+	+	+
NCT02092961	?	?	+	+	+	+

+ Low risk of bias
 ? Unclear risk of bias
 + High risk of bias

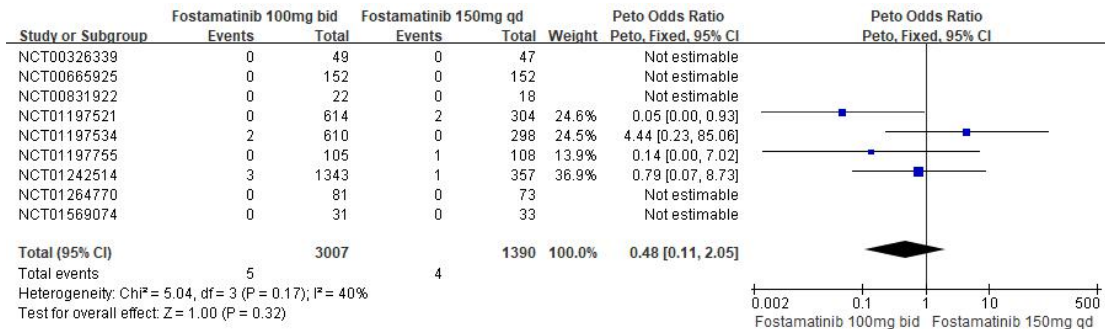
sFig.1 Risk of bias summary: each risk of bias item for each included study.



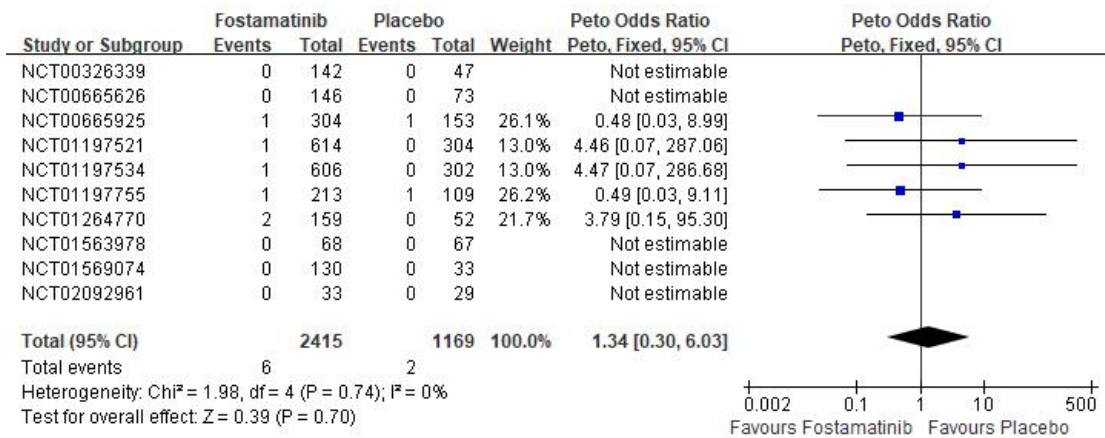
sFig.2 Forest plot of all-cause death based on fostamatinib versus placebo.



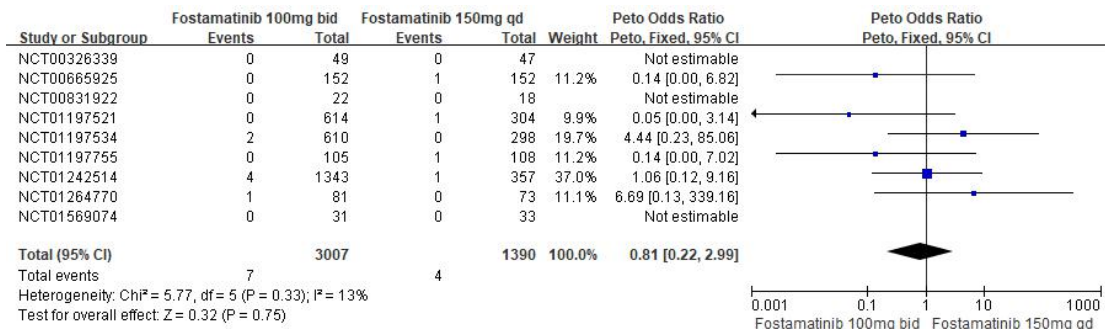
sFig.3 Forest plot of MACE based on fostamatinib versus placebo.



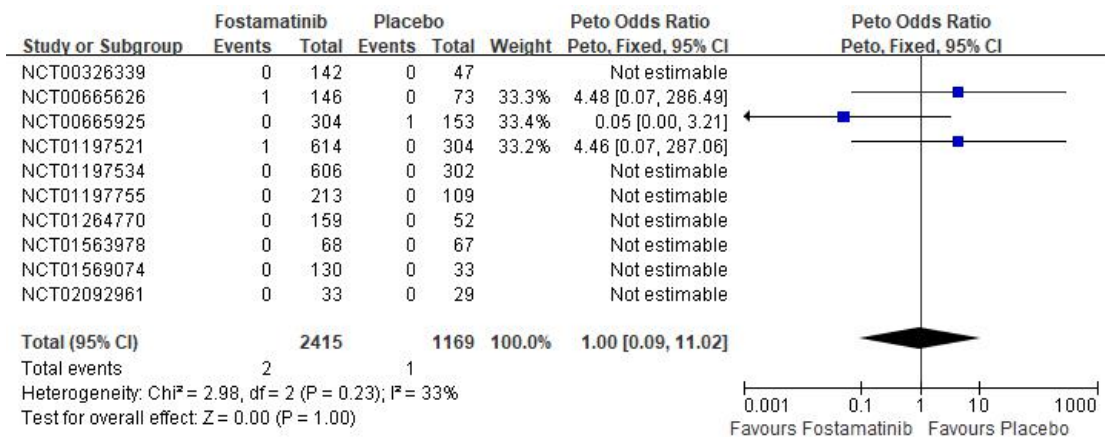
sFig.4 Forest plot of MACE based on fostamatinib 100mg bid versus fostamatinib 150mg qd.



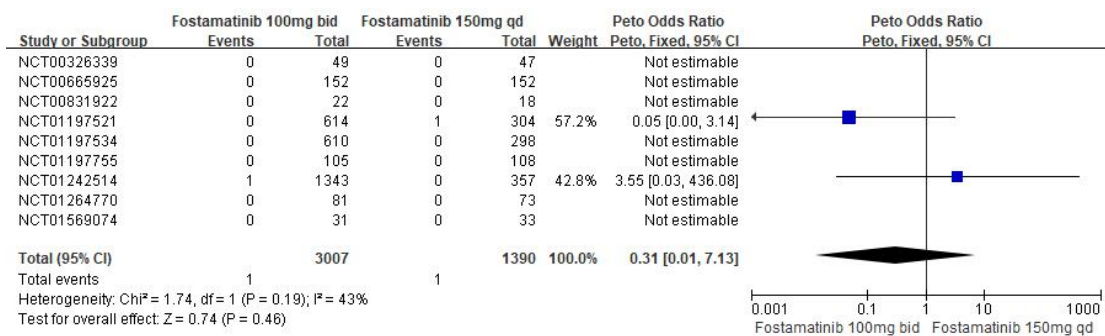
sFig.5 Forest plot of ischaemic heart disease based on fostamatinib versus placebo.



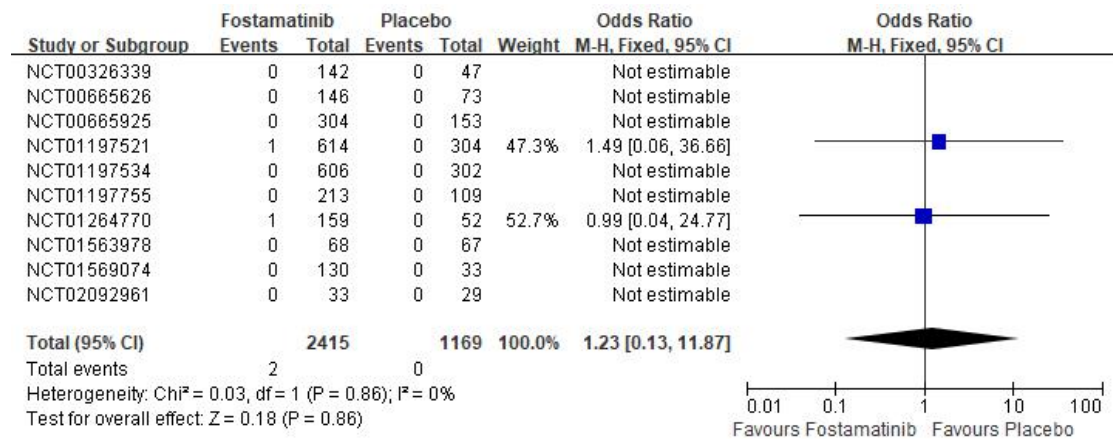
sFig.6 Forest plot of ischaemic heart disease based on fostamatinib 100mg bid versus fostamatinib 150mg qd.



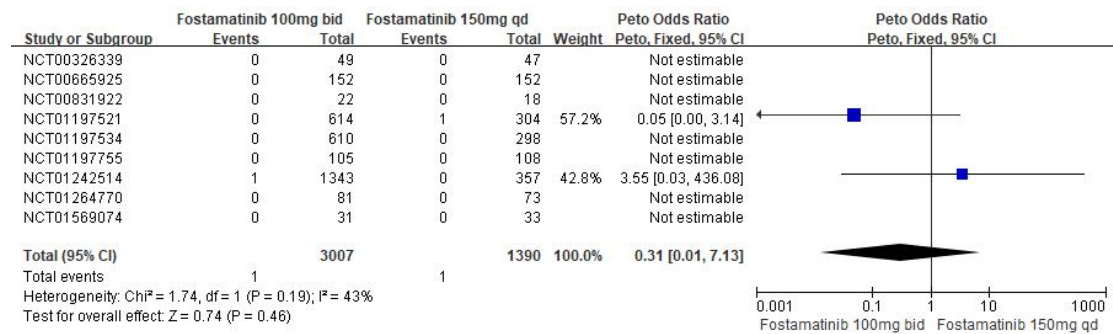
sFig.7 Forest plot of stroke based on fostamatinib versus placebo.



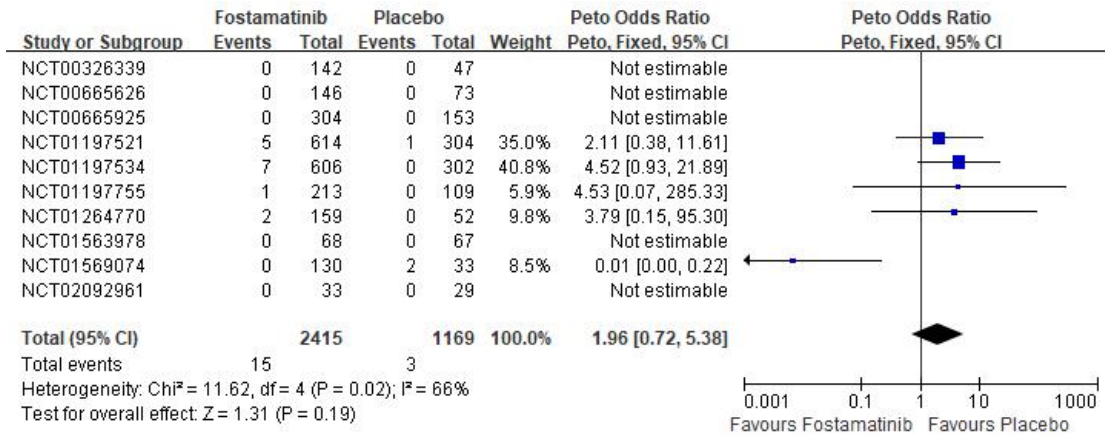
sFig.8 Forest plot of stroke based on fostamatinib 100mg bid versus fostamatinib 150mg qd.



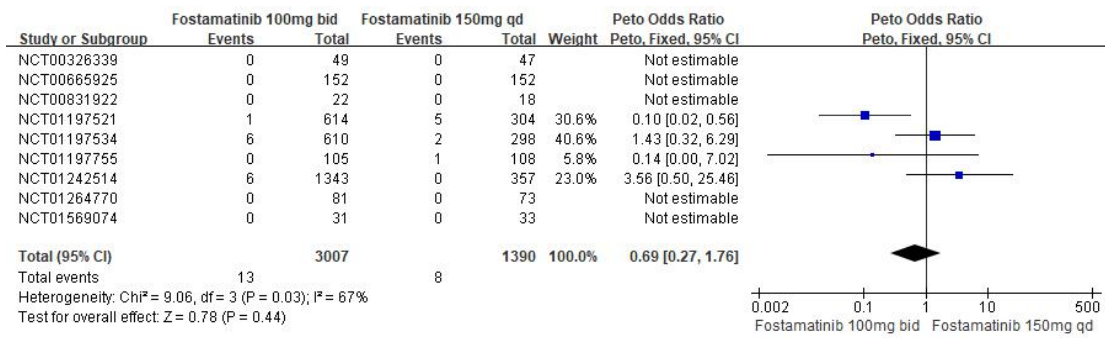
sFig.9 Forest plot of pulmonary heart disease and disease of pulmonary circulation based on fostamatinib versus placebo.



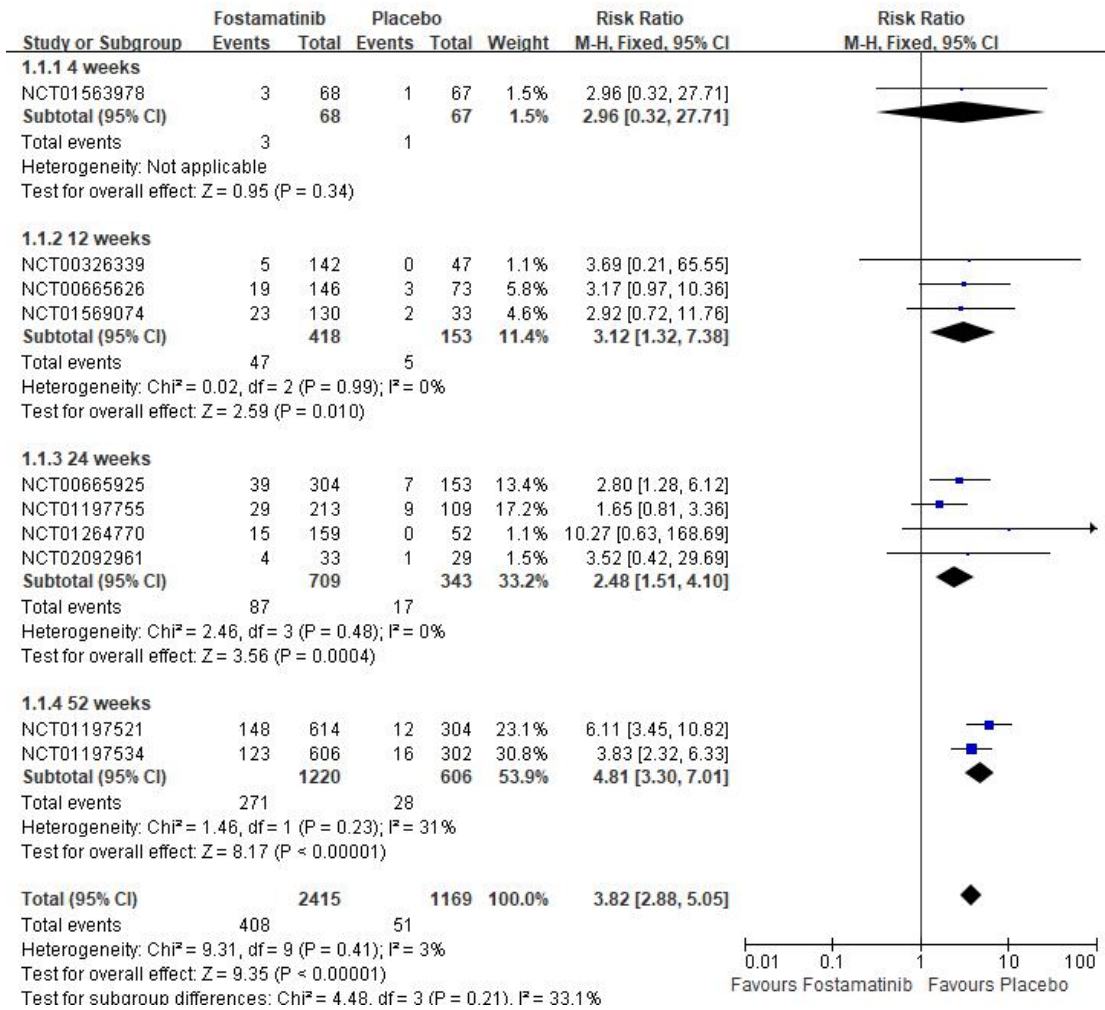
sFig.10 Forest plot of pulmonary heart disease and disease of pulmonary circulation based on fostamatinib 100mg bid versus fostamatinib 150mg qd.



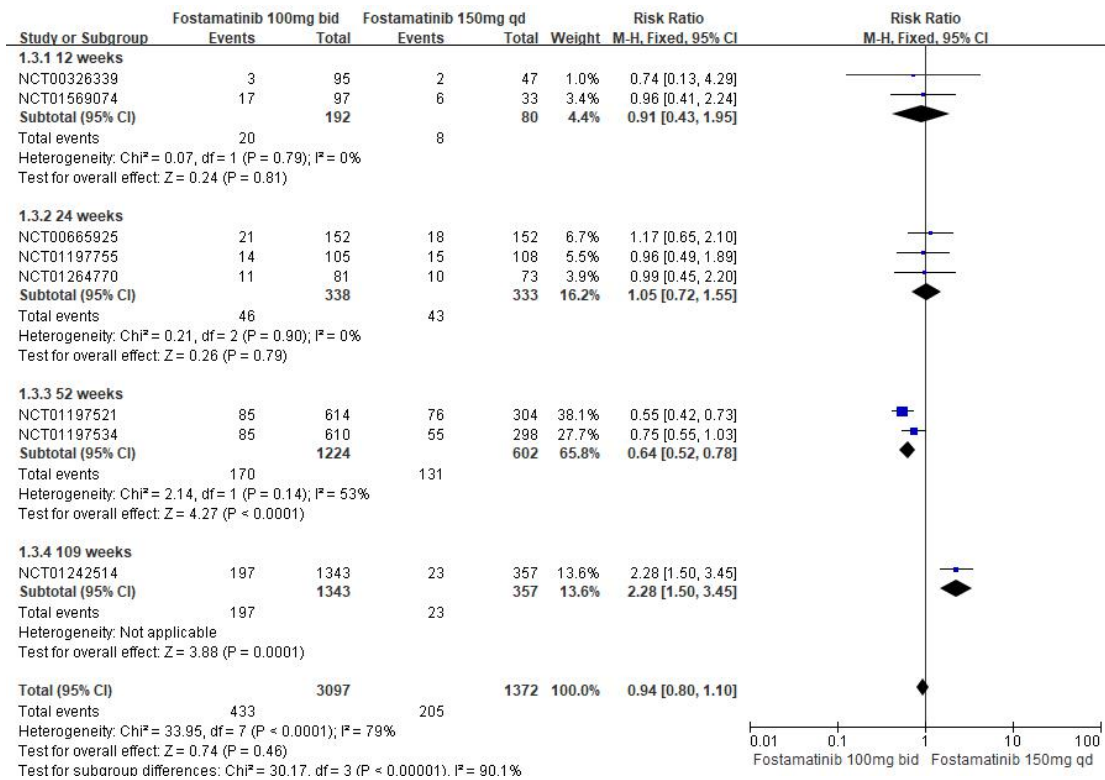
sFig.11 Forest plot of other forms of heart disease based on fostamatinib versus placebo.



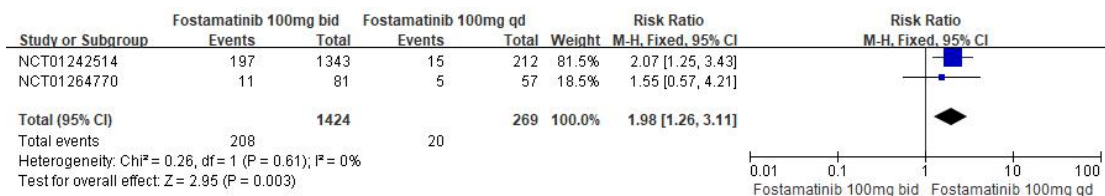
sFig.12 Forest plot of other forms of heart disease based on fostamatinib 100mg bid versus fostamatinib 150mg qd.



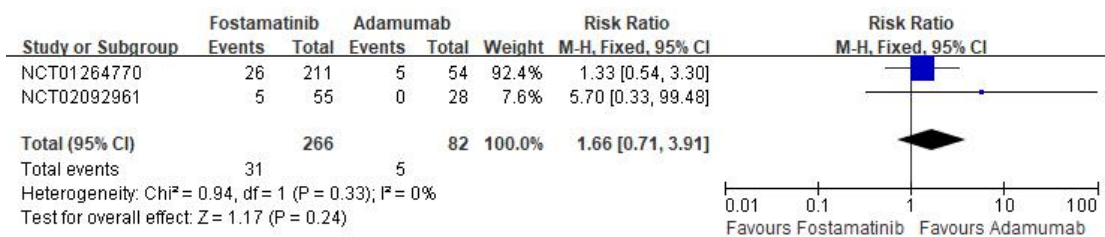
sFig.13 Forest plot of hypertension based on fostamatinib versus placebo.



sFig.14 Forest plot of hypertension based on fostamatinib 100mg bid versus fostamatinib 150mg qd.



sFig.15 Forest plot of hypertension based on fostamatinib 100mg bid versus fostamatinib 100mg qd.



sFig.16 Forest plot of hypertension based on fostamatinib versus adamumab.