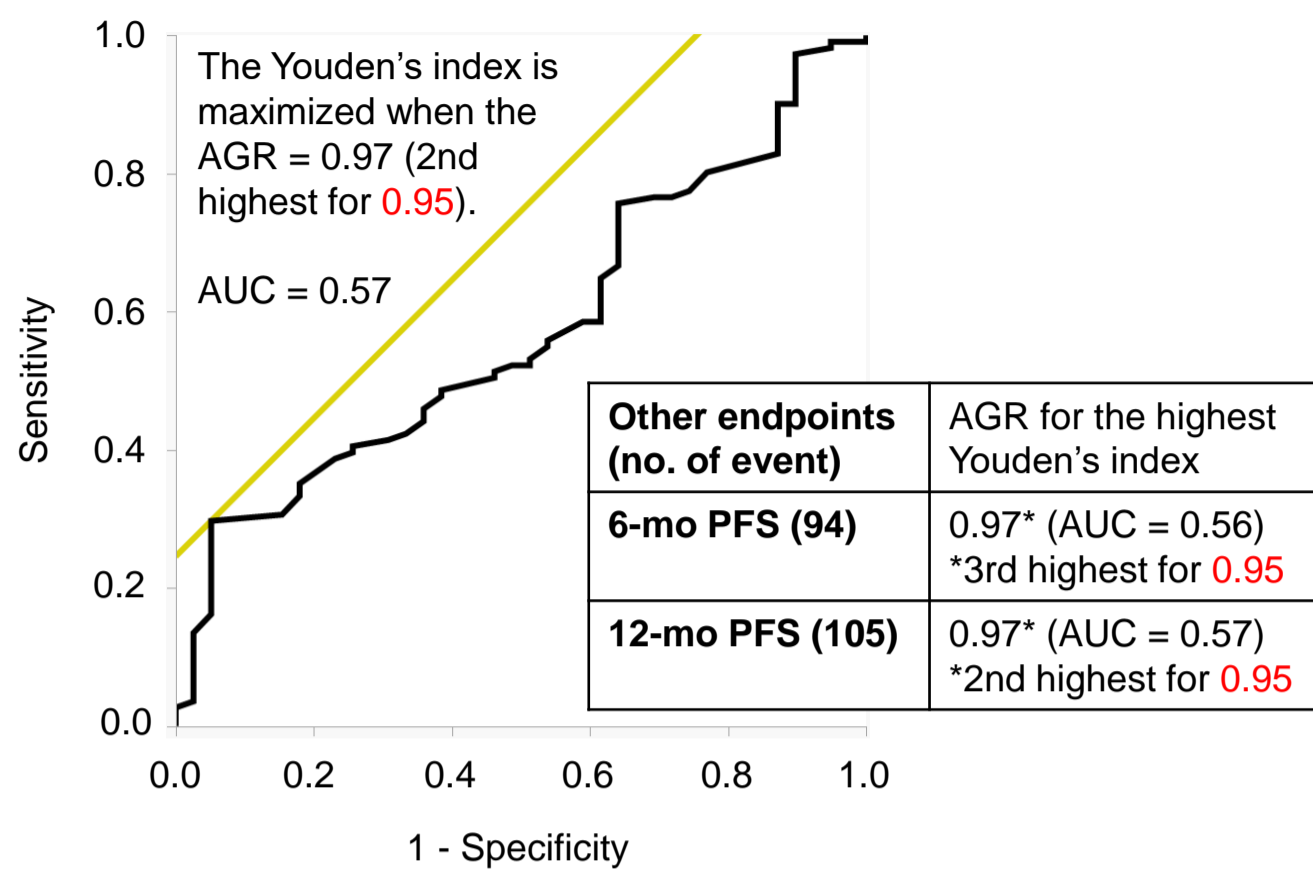
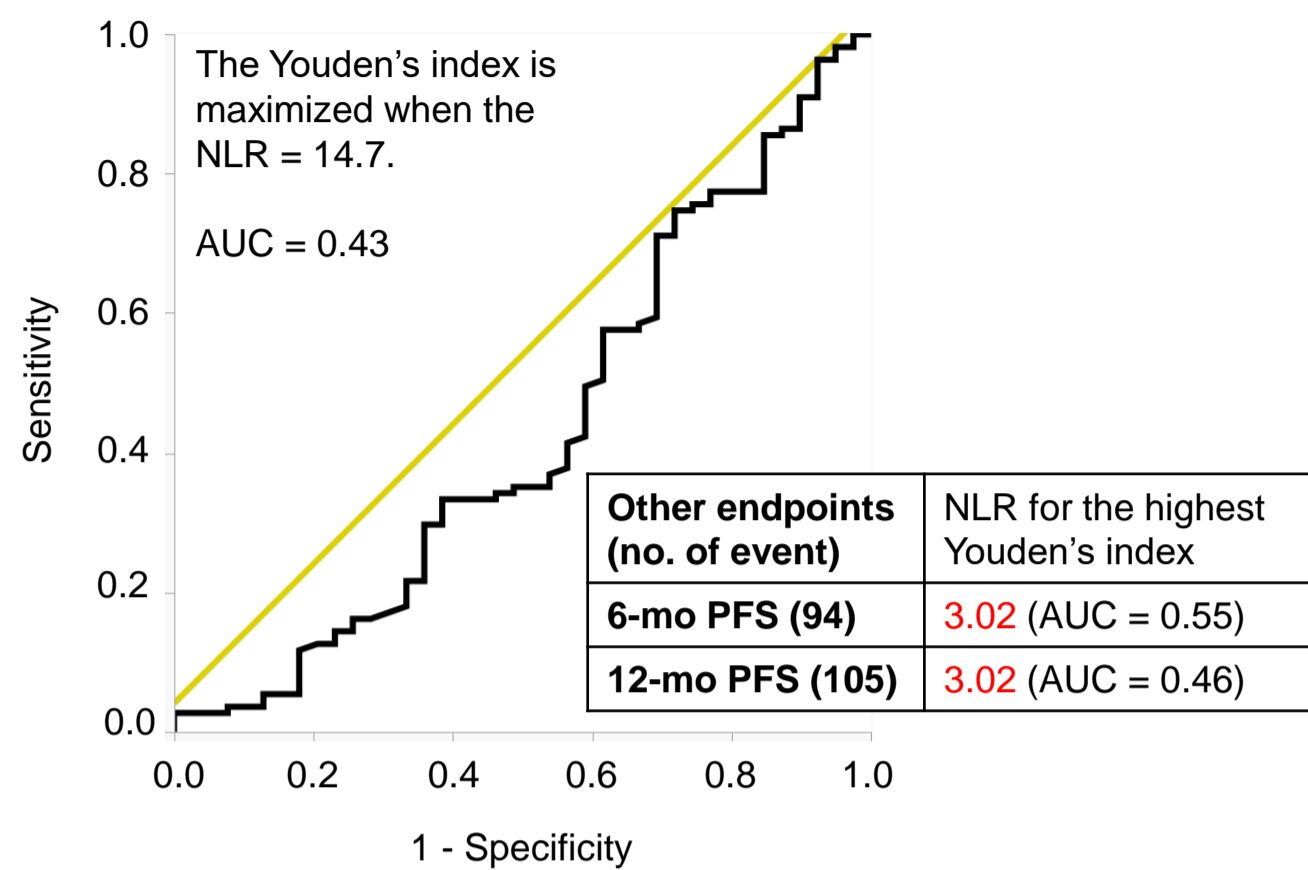


**Supplementary Figure S1.** ROC curve analyses of (A) AGR for PFS, (B) NLR for PFS, (C) AGR for CSS, (D) NLR for CSS, (E) AGR for OS, (F) NLR for OS. The optimal cutoff value of AGR or NLR was estimated through maximization of the Youden's index [Sensitivity - (1 - Specificity)] for each endpoint.

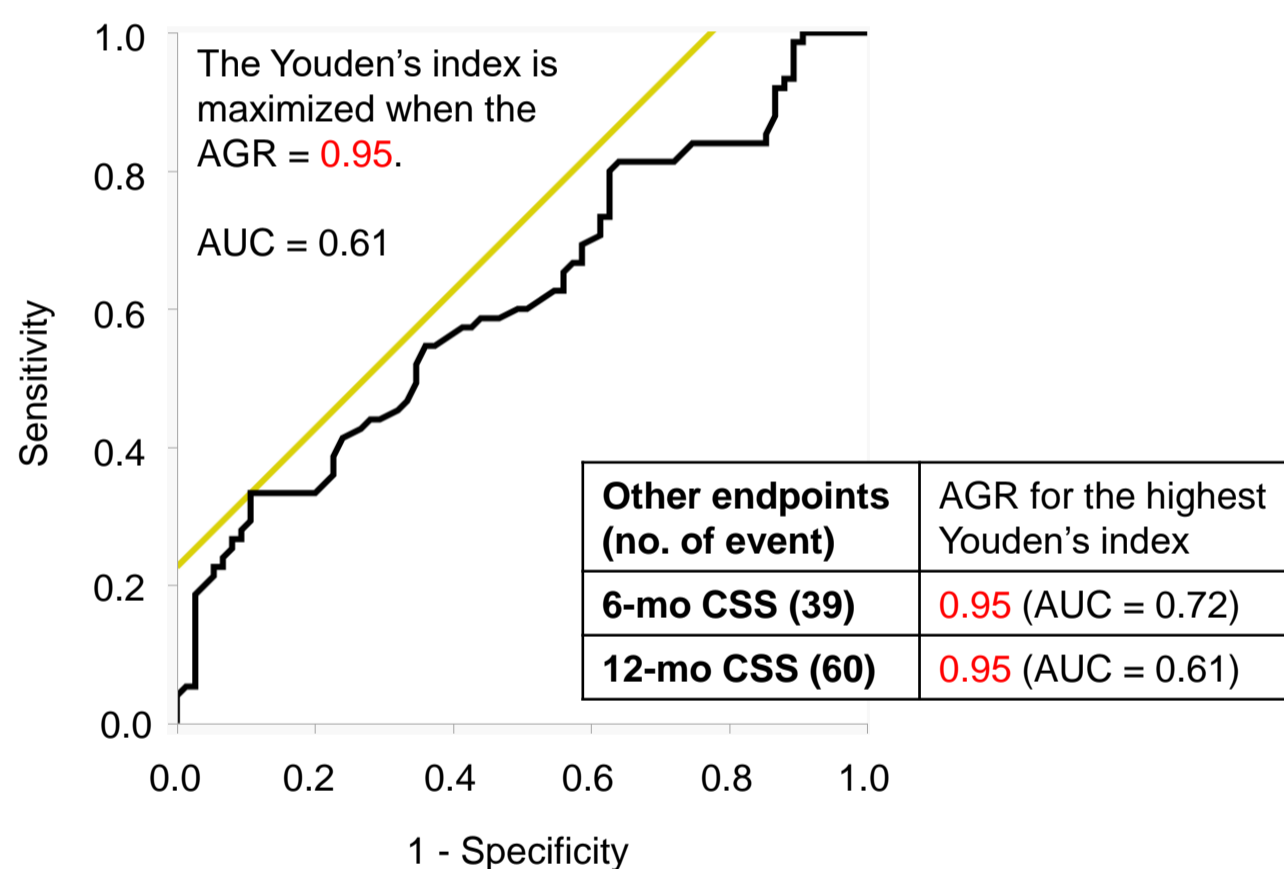
**(A) ROC curve analysis of the AGR for PFS (no. of event: 111)**



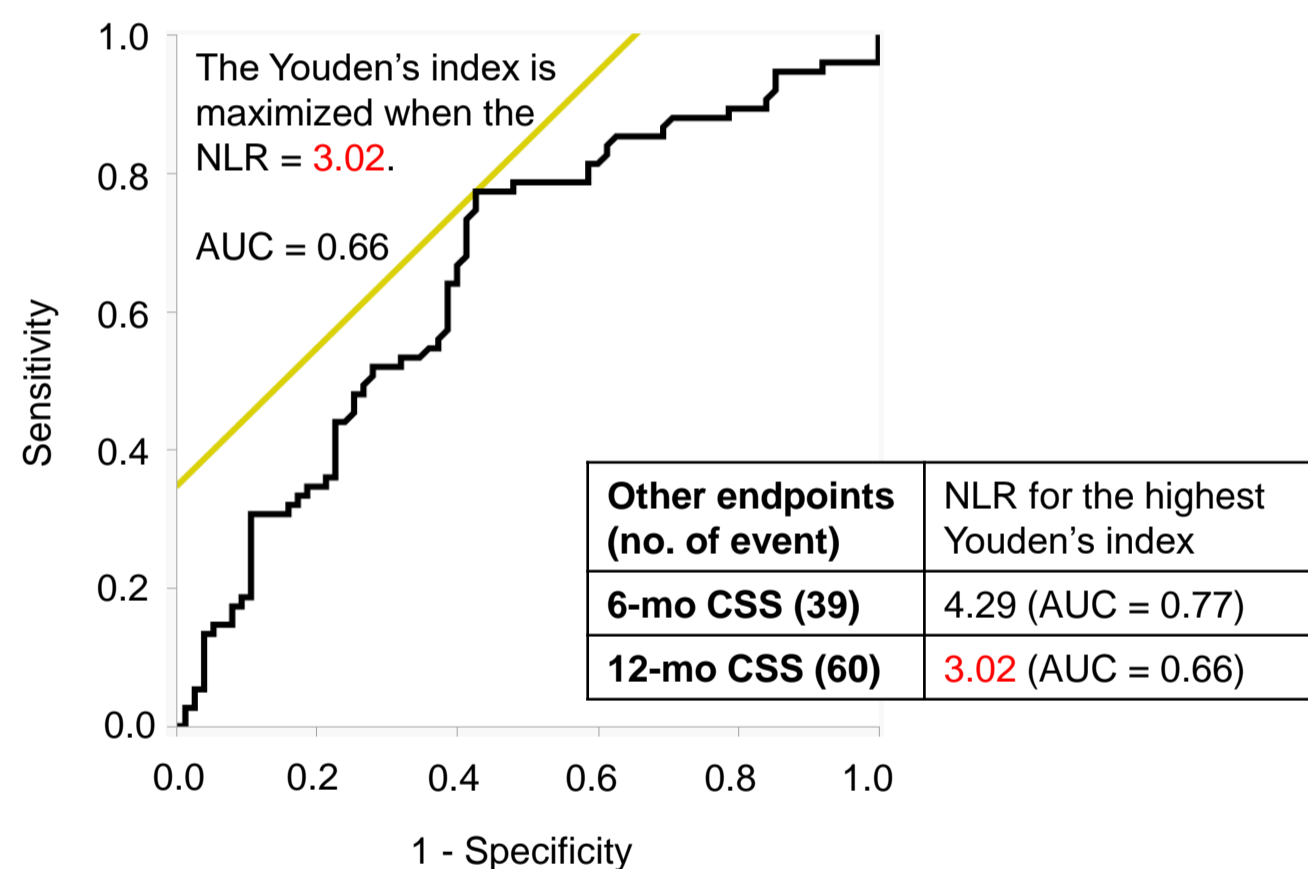
**(B) ROC curve analysis of the NLR for PFS (no. of event: 111)**



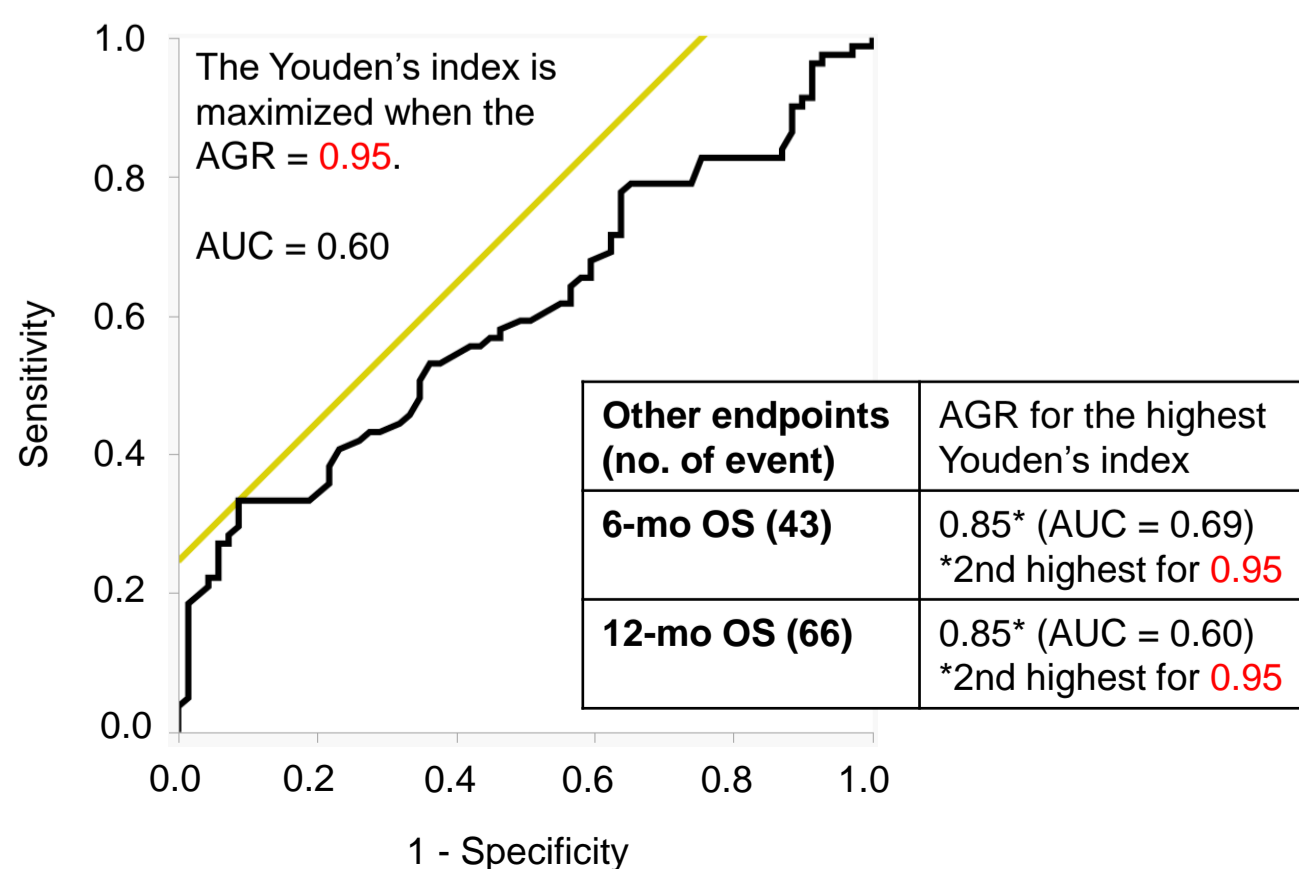
**(C) ROC curve analysis of the AGR for CSS (no. of event: 75)**



**(D) ROC curve analysis of the NLR for CSS (no. of event: 75)**



**(E) ROC curve analysis of the AGR for OS (no. of event: 81)**



**(F) ROC curve analysis of the NLR for OS (no. of event: 81)**

