

Regular Vesicles: 81.4%

Irregular Vesicles: 18.6%

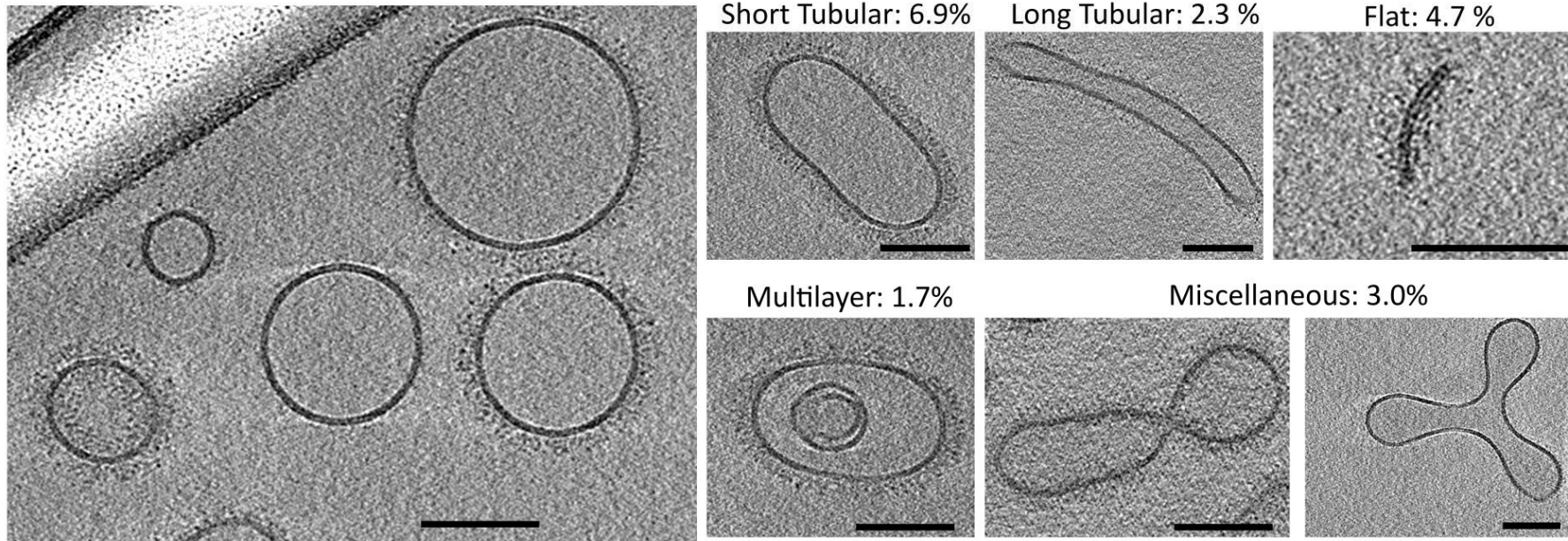


Figure S1: Gallery of EV categories. Cryo-EM analysis of 533 single EVs obtained from *C. neoformans*. EVs were characterized according to their morphological aspects in regular (rounded- bilayer vesicles) and irregular (not rounded – bilayer or multilayered vesicles) categories. Regular vesicles represented 81.4% of all EV analyzed. The irregular vesicles were subclassified as short tubular (6.9%), long tubular (2.3%), flat (4.7%), multilayer (1.7%), or vesicles with miscellaneous morphologies (3.0%). Scale bars represent 100nm. Data presented in this figure have been generated using images obtained using a Titan Krios (Thermo Scientific) transmission electron microscope.