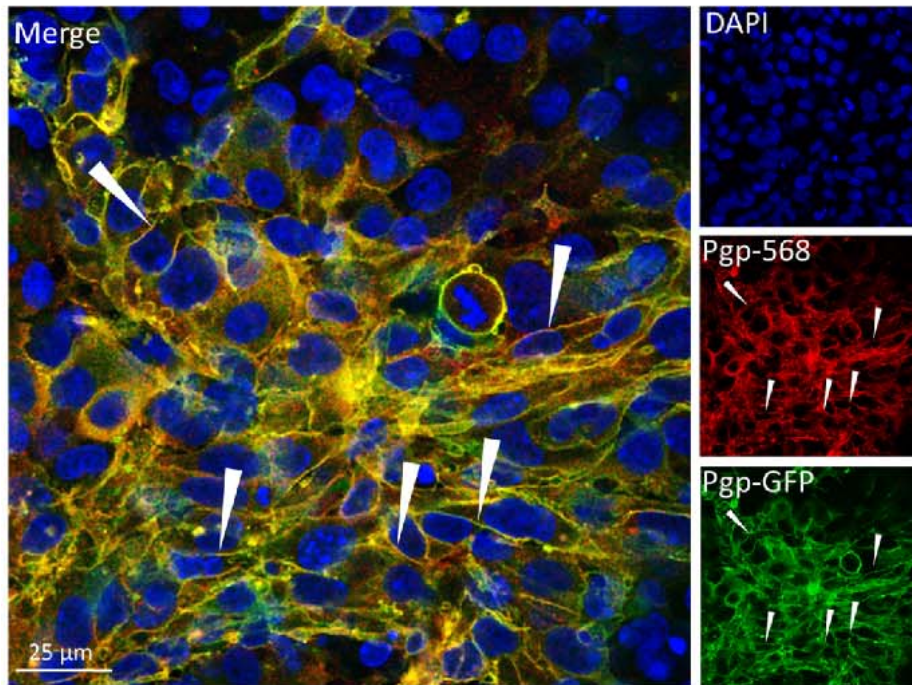


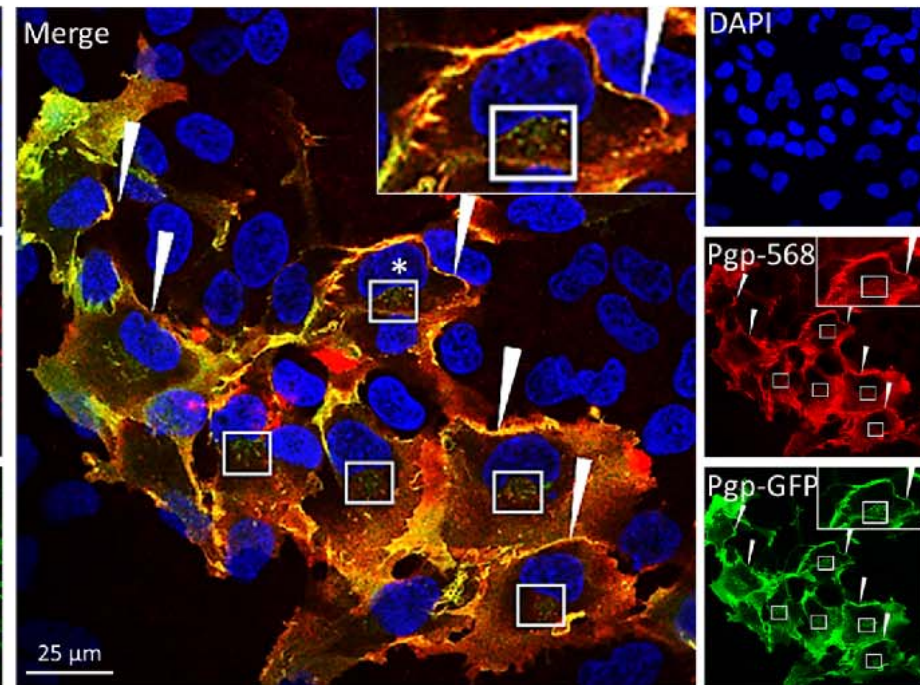
# A

## RBE4-MDR1-EGFP



# B

## hCMEC/D3-MDR1-EGFP



**Additional file 6**

**Indirect staining of Pgp in *MDR1*-EGFP transduced RBE4 and hCMEC/D3 cells colocalizes with the Pgp-EGFP fluorescence signal.**

Colocalization of Pgp-EGFP signal (green) and indirect Pgp staining (red: Alexa 568) after fixation of the confluent RBE4-*MDR1*-EGFP (A) and

hCMEC/D3-*MDR1*-EGFP cells (B) with paraformaldehyde substantiates that the GFP signal reflects cellular Pgp localization of the Pgp-EGFP protein overexpressed in the cells and is not indicative of cleaved EGFP tag. Pgp plasma membrane localization is highlighted by arrowheads and intracellular vesicular Pgp localization in hCMEC/D3-*MDR1*-EGFP cells by boxes. In the upper right corner of B, a hCMEC-*MDR1*-EGFP cell with intracellular vesicular Pgp localization is magnified. Cell nuclei are visible by counterstaining with DAPI (blue).