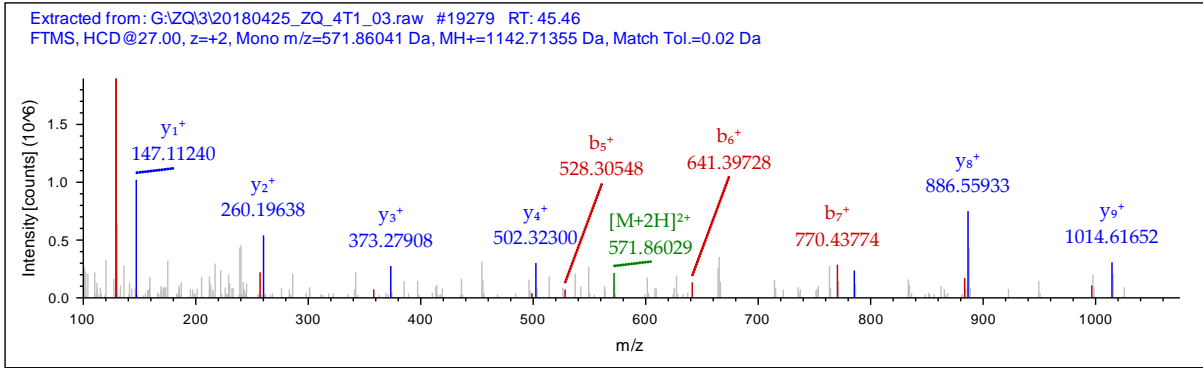
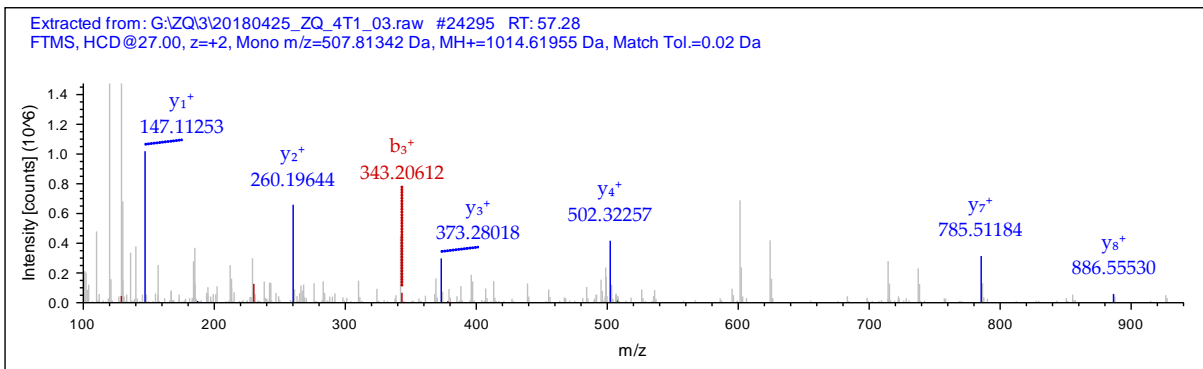


>smproMouse7587016_QTLGLELLK



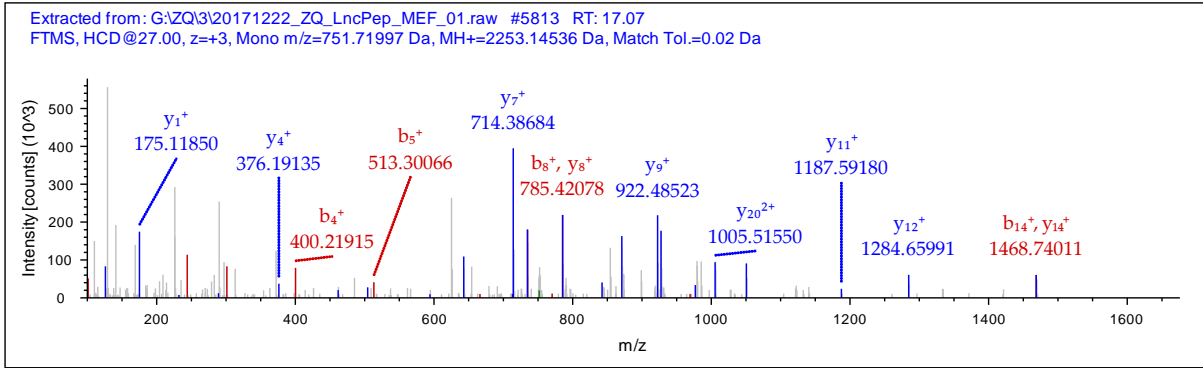
#1	b ⁺	b ²⁺	Seq.	y ⁺	y ²⁺	#2
1	129.10225	65.05476	K			10
2	257.16083	129.08405	Q	1014.61942	507.81335	9
3	358.20851	179.60789	T	886.56084	443.78406	8
4	471.29258	236.14993	L	785.51316	393.26022	7
5	528.31405	264.66066	G	672.42909	336.71818	6
6	641.39812	321.20270	L	615.40762	308.20745	5
7	770.44072	385.72400	E	502.32355	251.66541	4
8	883.52479	442.26603	L	373.28095	187.14411	3
9	996.60886	498.80807	L	260.19688	130.60208	2
10			K	147.11281	74.06004	1

>smproMouse7587016_QTLGLELLK



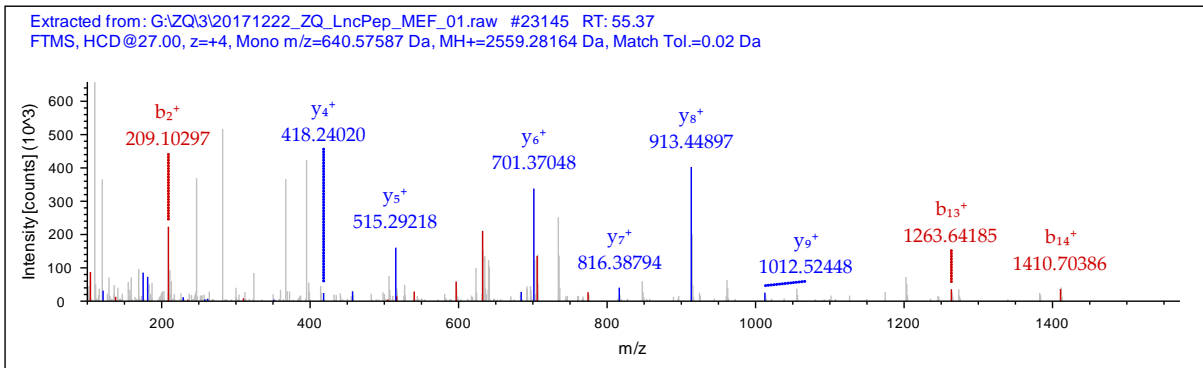
#1	b ⁺	b ²⁺	Seq.	y ⁺	y ²⁺	#2
1	129.06586	65.03657	Q			9
2	230.11354	115.56041	T	886.56084	443.78406	8
3	343.19761	172.10244	L	785.51316	393.26022	7
4	400.21908	200.61318	G	672.42909	336.71818	6
5	513.30315	257.15521	L	615.40762	308.20745	5
6	642.34575	321.67651	E	502.32355	251.66541	4
7	755.42982	378.21855	L	373.28095	187.14411	3
8	868.51389	434.76058	L	260.19688	130.60208	2
9			K	147.11281	74.06004	1

>smproMouse2604921_DKGVLSQPSPHQHAPLQSGGR



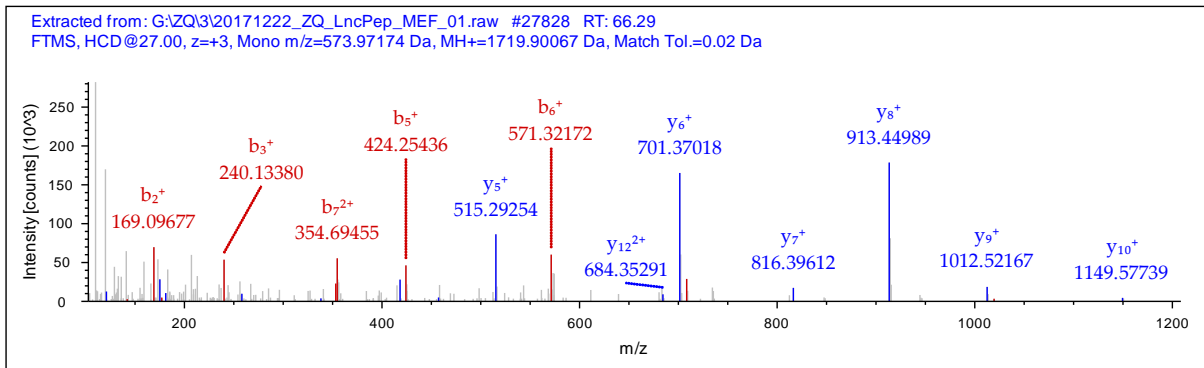
#1	b ⁺	b ²⁺	b ³⁺	Seq.	y ⁺	y ²⁺	y ³⁺	#2
1	116.03423	58.52075	39.34959	D				22
2	244.12920	122.56824	82.04792	K	2138.12145	1069.56436	713.37867	21
3	301.15067	151.07897	101.05507	G	2010.02648	1005.51688	670.68034	20
4	400.21909	200.61318	134.07788	V	1953.00501	977.00614	651.67319	19
5	513.30316	257.15522	171.77257	L	1853.93659	927.47193	618.65038	18
6	570.32463	285.66595	190.77973	G	1740.85252	870.92990	580.95569	17
7	657.35666	329.18197	219.79040	S	1683.83105	842.41916	561.94853	16
8	785.41524	393.21126	262.47660	Q	1596.79902	798.90315	532.93786	15
9	882.46801	441.73764	294.82752	P	1468.74044	734.87386	490.25166	14
10	969.50004	485.25366	323.83820	S	1371.68767	686.34747	457.90074	13
11	1066.55281	533.78004	356.18912	P	1284.65564	642.83146	428.89006	12
12	1203.61172	602.30950	401.87542	H	1187.60287	594.30507	396.53914	11
13	1331.67030	666.33879	444.56162	Q	1050.54396	525.77562	350.85284	10
14	1468.72921	734.86824	490.24792	H	922.48538	461.74633	308.16664	9
15	1539.76633	770.38680	513.92696	A	785.42647	393.21687	262.48034	8
16	1636.81910	818.91319	546.27788	P	714.38935	357.69831	238.80130	7
17	1749.90317	875.45522	583.97257	L	617.33658	309.17193	206.45038	6
18	1877.96175	939.48451	626.65877	Q	504.25251	252.62989	168.75669	5
19	1964.99378	983.00053	655.66944	S	376.19393	188.60060	126.06949	4
20	2022.01525	1011.51126	674.67660	G	289.16190	145.08459	97.05882	3
21	2079.03672	1040.02200	693.68376	G	232.14043	116.57385	78.05166	2
22				R	175.11896	88.06312	59.04450	1

>smproMouse2604921_HATGTESRPAALAFHVPDWPQVSR



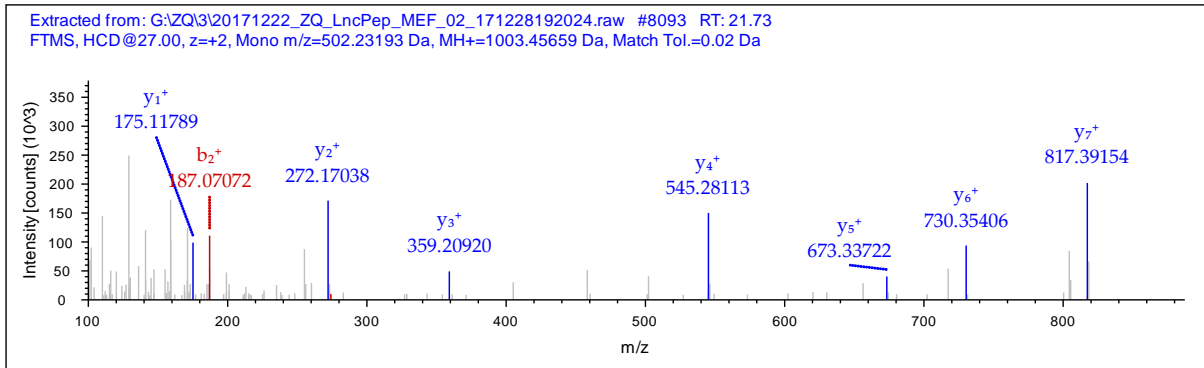
#1	b ⁺	b ²⁺	b ³⁺	b ⁴⁺	Seq.	y ⁺	y ²⁺	y ³⁺	y ⁴⁺	#2
1	138.06619	69.53673	46.69358	35.27200	H					24
2	209.10331	105.05529	70.37262	53.03128	A	2422.22634	1211.61681	808.08030	606.31204	23
3	310.15099	155.57913	104.05518	78.29320	T	235.118922	1176.09825	784.40126	588.55276	22
4	367.17246	184.08987	123.06234	92.54857	G	2250.14154	1125.57441	750.71870	563.29084	21
5	468.22014	234.61371	156.74490	117.81049	T	2193.12007	1097.06367	731.71154	549.03548	20
6	597.26274	299.13501	199.75910	150.07114	E	2092.07239	1046.53983	698.02898	523.77356	19
7	684.29477	342.65102	228.76977	171.82915	S	1963.02979	982.01853	655.01478	491.51291	18
8	840.39589	420.70158	280.80348	210.85443	R	1875.99776	938.50252	626.00410	469.75490	17
9	937.44866	469.22797	313.15440	235.11762	P	1719.89664	860.45196	573.97040	430.72962	16
10	1008.48578	504.74653	336.83344	252.87690	A	1622.84387	811.92557	541.61947	406.46643	15
11	1079.52290	540.26509	360.51248	270.63618	A	1551.80675	776.40701	517.94043	388.70715	14
12	1192.60697	596.80712	398.20717	298.90720	L	1480.76963	740.88845	494.26139	370.94787	13
13	1263.64409	632.32568	421.88621	316.66648	A	1367.68556	684.34642	456.56670	342.67685	12
14	1410.71251	705.85989	470.90902	353.43358	F	1296.64844	648.82786	432.88766	324.91757	11
15	1547.77142	774.38935	516.59532	387.69831	H	1149.58002	575.29365	383.86486	288.15046	10
16	1646.83984	823.92356	549.61813	412.46542	V	1012.52111	506.76419	338.17855	253.88574	9
17	1743.89261	872.44994	581.96905	436.72861	P	913.45269	457.22998	305.15575	229.11863	8
18	1858.91956	929.96342	620.31137	465.48535	D	816.39992	408.70360	272.80482	204.85544	7
19	2044.99888	1023.00308	682.33781	512.00518	W	701.37297	351.19012	234.46251	176.09870	6
20	2142.05165	1071.52946	714.68873	536.26837	P	515.29365	258.15046	172.43607	129.57887	5
21	2199.07312	1100.04020	733.69589	550.52374	G	418.24088	209.62408	140.08514	105.31568	4
22	2298.14154	1149.57441	766.71870	575.29084	V	361.21941	181.11334	121.07799	91.06031	3
23	2385.17357	1193.09042	795.72937	597.04885	S	262.15099	131.57913	88.05518	66.29321	2
24					R	175.11896	88.06312	59.04450	44.53520	1

>smproMouse2604921_PAALAFHVPDWPVGVS



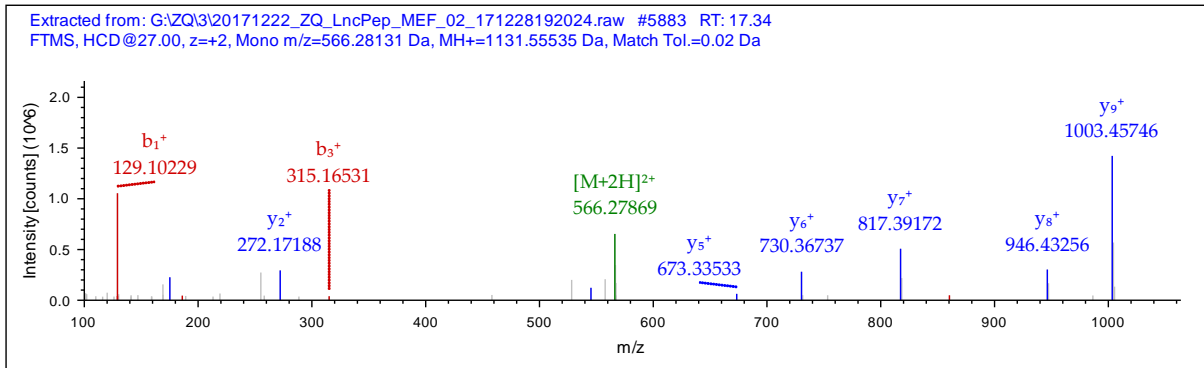
#1	b ⁺	b ²⁺	b ³⁺	Seq.	y ⁺	y ²⁺	y ³⁺	#2
1	98.06005	49.53366	33.35820	P				16
2	169.09717	85.05222	57.03724	A	1622.84387	811.92557	541.61947	15
3	240.13429	120.57078	80.71628	A	1551.80675	776.40701	517.94043	14
4	353.21836	177.11282	118.41097	L	1480.76963	740.88845	494.26139	13
5	424.25548	212.63138	142.09001	A	1367.68556	684.34642	456.56670	12
6	571.32390	286.16559	191.11282	F	1296.64844	648.82786	432.88766	11
7	708.38281	354.69504	236.79912	H	1149.58002	575.29365	383.86486	10
8	807.45123	404.22925	269.82193	V	1012.52111	506.76419	338.17855	9
9	904.50400	452.75564	302.17285	P	913.45269	457.22998	305.15575	8
10	1019.53095	510.26911	340.51517	D	816.39992	408.70360	272.80482	7
11	1205.61027	603.30877	402.54161	W	701.37297	351.19012	234.46251	6
12	1302.66304	651.83516	434.89253	P	515.29365	258.15046	172.43607	5
13	1359.68451	680.34589	453.89969	G	418.24088	209.62408	140.08514	4
14	1458.75293	729.88010	486.92249	V	361.21941	181.11334	121.07799	3
15	1545.78496	773.39612	515.93317	S	262.15099	131.57913	88.05518	2
16				R	175.11896	88.06312	59.04450	1

>smproMouse3643811_GESGQWSPR



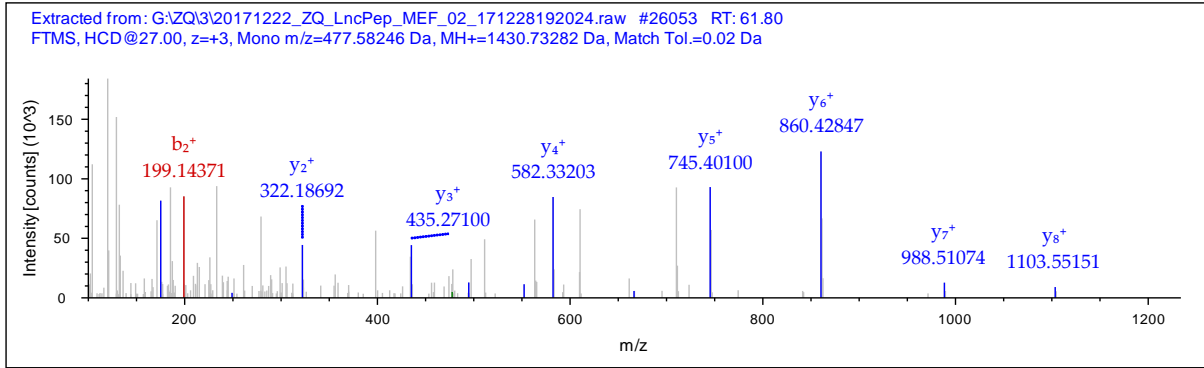
#1	b ⁺	b ²⁺	Seq.	y ⁺	y ²⁺	#2
1	58.02875	29.51801	G			9
2	187.07135	94.03931	E	946.43776	473.72252	8
3	274.10338	137.55533	S	817.39516	409.20122	7
4	331.12485	166.06606	G	730.36313	365.68520	6
5	459.18343	230.09535	Q	673.34166	337.17447	5
6	645.26275	323.13501	W	545.28308	273.14518	4
7	732.29478	366.65103	S	359.20376	180.10552	3
8	829.34755	415.17741	P	272.17173	136.58950	2
9			R	175.11896	88.06312	1

>smproMouse3643811_KGESGQWSPR



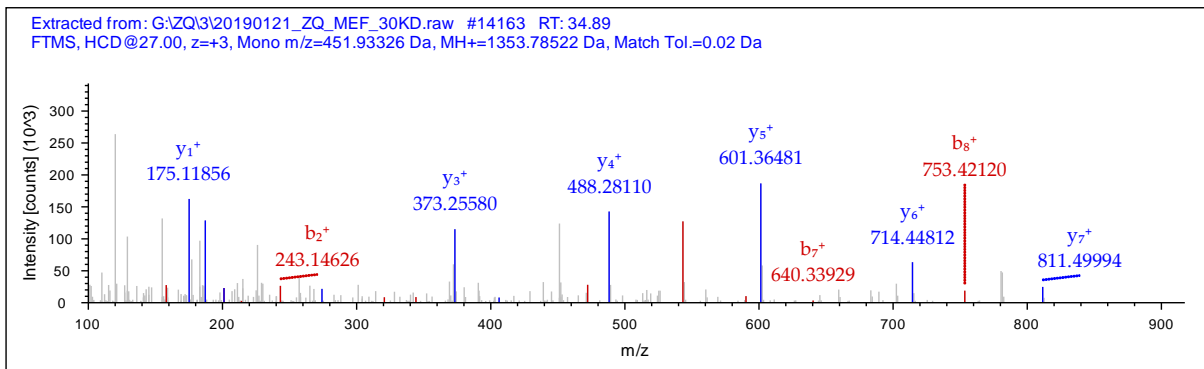
#1	b ⁺	b ²⁺	Seq.	y ⁺	y ²⁺	#2
1	129.10225	65.05476	K			10
2	186.12372	93.56550	G	1003.45923	502.23325	9
3	315.16632	158.08680	E	946.43776	473.72252	8
4	402.19835	201.60281	S	817.39516	409.20122	7
5	459.21982	230.11355	G	730.36313	365.68520	6
6	587.27840	294.14284	Q	673.34166	337.17447	5
7	773.35772	387.18250	W	545.28308	273.14518	4
8	860.38975	430.69851	S	359.20376	180.10552	3
9	957.44252	479.22490	P	272.17173	136.58950	2
10			R	175.11896	88.06312	1

>smproMouse2669262_VVEDKDYFLFR



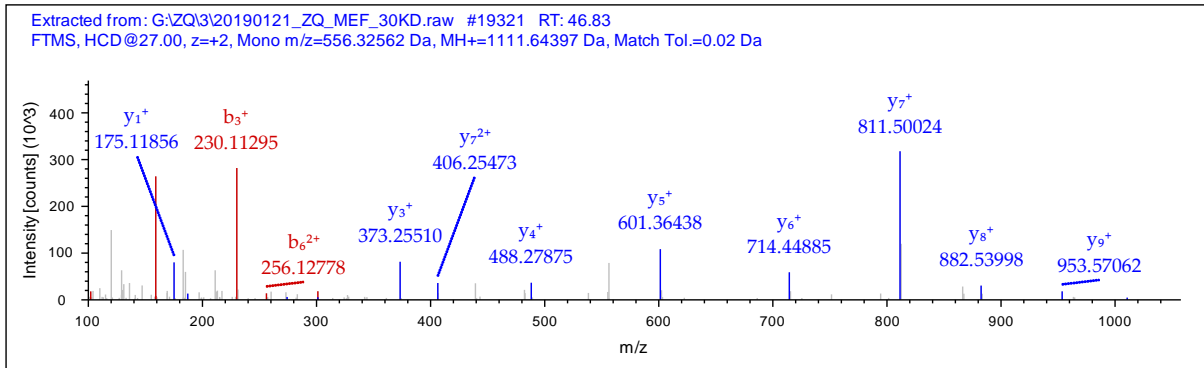
#1	b ⁺	b ²⁺	b ³⁺	Seq.	y ⁺	y ²⁺	y ³⁺	#2
1	100.07570	50.54149	34.03008	V				11
2	199.14412	100.07570	67.05289	V	1331.66308	666.33518	444.55921	10
3	328.18672	164.59700	110.06709	E	1232.59466	616.80097	411.53640	9
4	443.21367	222.11047	148.40941	D	1103.55206	552.27967	368.52220	8
5	571.30864	286.15796	191.10773	K	988.52511	494.76619	330.17989	7
6	686.33559	343.67143	229.45005	D	860.43014	430.71871	287.48156	6
7	849.39891	425.20309	283.80449	Y	745.40319	373.20523	249.13925	5
8	996.46733	498.73730	332.82729	F	582.33987	291.67357	194.78481	4
9	1109.55140	555.27934	370.52198	L	435.27145	218.13936	145.76200	3
10	1256.61982	628.81355	419.54479	F	322.18738	161.59733	108.06731	2
11				R	175.11896	88.06312	59.04450	1

>smproMouse8230924_NKTGAAPIDVVR



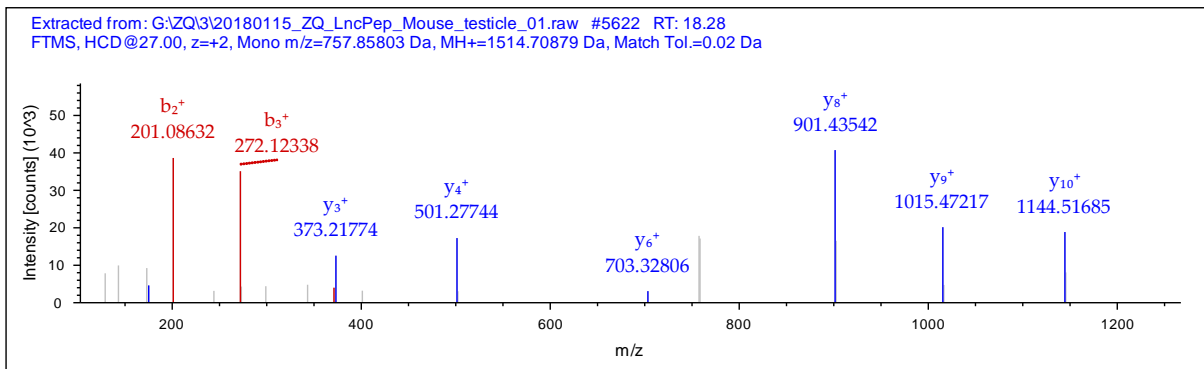
#1	b ⁺	b ²⁺	b ³⁺	Seq.	y ⁺	y ²⁺	y ³⁺	#2
1	115.05021	58.02874	39.02159	N				13
2	243.14518	122.07623	81.71991	K	1239.74202	620.37465	413.91886	12
3	344.19286	172.60007	115.40247	T	1111.64705	556.32716	371.22053	11
4	401.21433	201.11080	134.40963	G	1010.59937	505.80332	337.53797	10
5	472.25145	236.62936	158.08867	A	953.57790	477.29259	318.53082	9
6	543.28857	272.14792	181.76771	A	882.54078	441.77403	294.85178	8
7	640.34134	320.67431	214.11863	P	811.50366	406.25547	271.17274	7
8	753.42541	377.21634	251.81332	I	714.45089	357.72908	238.82181	6
9	866.50948	433.75838	289.50801	I	601.36682	301.18705	201.12712	5
10	981.53643	491.27185	327.85033	D	488.28275	244.64501	163.43243	4
11	1080.60485	540.80606	360.87313	V	373.25580	187.13154	125.09012	3
12	1179.67327	590.34027	393.89594	V	274.18738	137.59733	92.06731	2
13				R	175.11896	88.06312	59.04450	1

>smproMouse8230924_TGAAPIDVVR



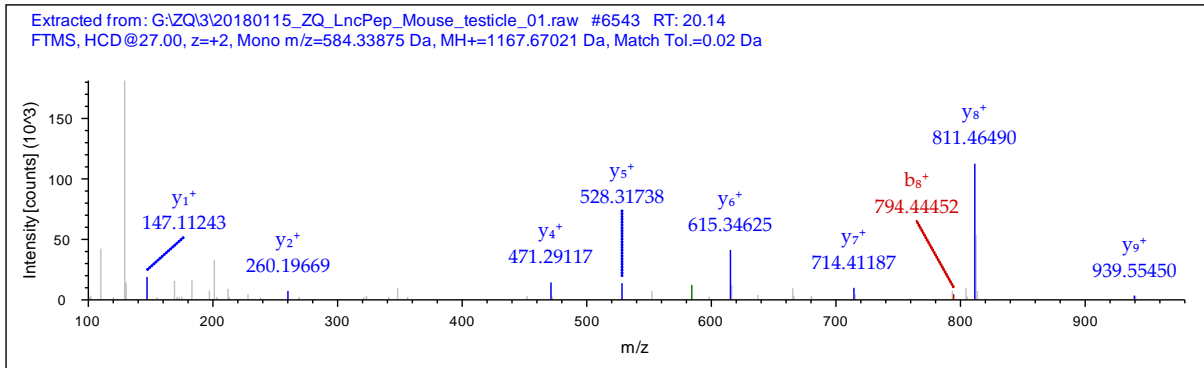
#1	b ⁺	b ²⁺	Seq.	y ⁺	y ²⁺	#2
1	102.05496	51.53112	T			11
2	159.07643	80.04185	G	1010.59937	505.80332	10
3	230.11355	115.56041	A	953.57790	477.29259	9
4	301.15067	151.07897	A	882.54078	441.77403	8
5	398.20344	199.60536	P	811.50366	406.25547	7
6	511.28751	256.14739	I	714.45089	357.72908	6
7	624.37158	312.68943	I	601.36682	301.18705	5
8	739.39853	370.20290	D	488.28275	244.64501	4
9	838.46695	419.73711	V	373.25580	187.13154	3
10	937.53537	469.27132	V	274.18738	137.59733	2
11			R	175.11896	88.06312	1

>smproMouse81871_AEAVENPTSDQPTR



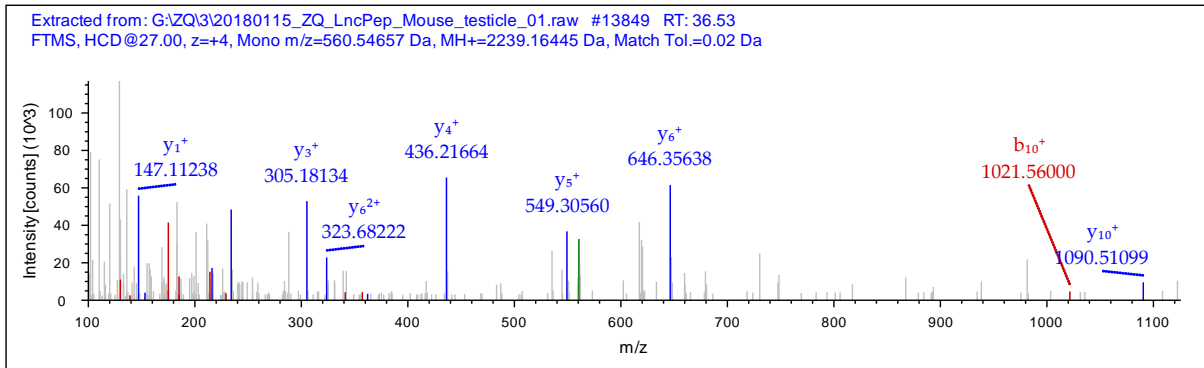
#1	b ⁺	b ²⁺	Seq.	y ⁺	y ²⁺	#2
1	72.04440	36.52584	A			14
2	201.08700	101.04714	E	1443.67109	722.33918	13
3	272.12412	136.56570	A	1314.62849	657.81788	12
4	371.19254	186.09991	V	1243.59137	622.29932	11
5	500.23514	250.62121	E	1144.52295	572.76511	10
6	614.27807	307.64267	N	1015.48035	508.24381	9
7	711.33084	356.16906	P	901.43742	451.22235	8
8	812.37852	406.69290	T	804.38465	402.69596	7
9	899.41055	450.20891	S	703.33697	352.17212	6
10	1014.43750	507.72239	D	616.30494	308.65611	5
11	1142.49608	571.75168	Q	501.27799	251.14263	4
12	1239.54885	620.27806	P	373.21941	187.11334	3
13	1340.59653	670.80190	T	276.16664	138.58696	2
14			R	175.11896	88.06312	1

>smproMouse81871_EVKPVSGPNLK



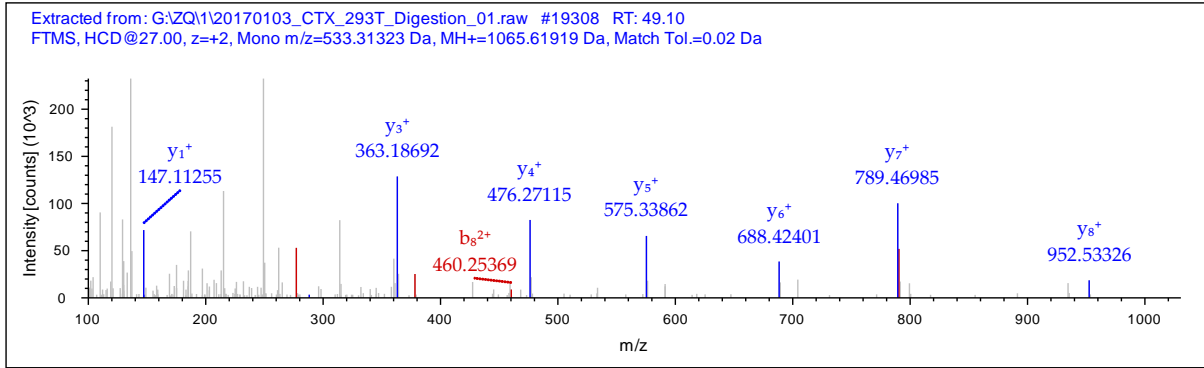
#1	b ⁺	b ²⁺	Seq.	y ⁺	y ²⁺	#2
1	130.04988	65.52858	E			11
2	229.11830	115.06279	V	1038.63066	519.81897	10
3	357.21327	179.11027	K	939.56224	470.28476	9
4	454.26604	227.63666	P	811.46727	406.23727	8
5	553.33446	277.17087	V	714.41450	357.71089	7
6	640.36649	320.68688	S	615.34608	308.17668	6
7	697.38796	349.19762	G	528.31405	264.66066	5
8	794.44073	397.72400	P	471.29258	236.14993	4
9	908.48366	454.74547	N	374.23981	187.62354	3
10	1021.56773	511.28750	L	260.19688	130.60208	2
11			K	147.11281	74.06004	1

>smproMouse81871_EVKPVSGPNLKGEEPLMASK



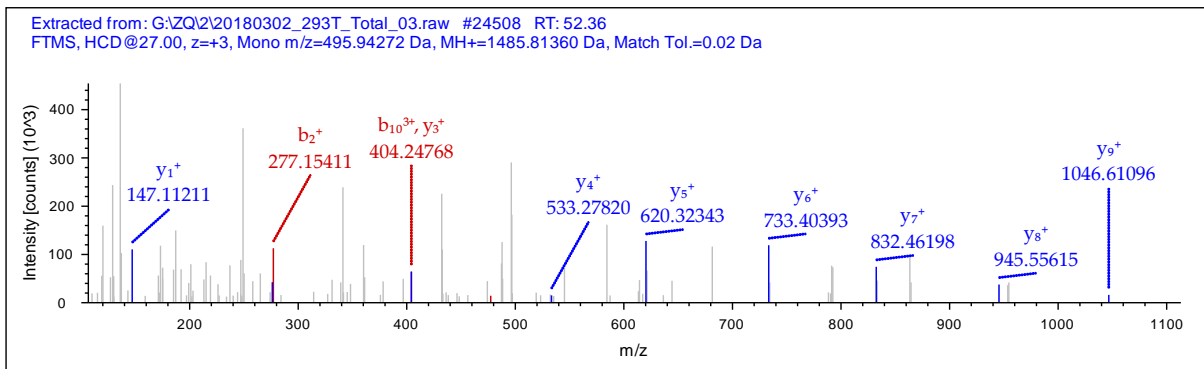
#1	b ⁺	b ²⁺	b ³⁺	b ⁴⁺	Seq.	y ⁺	y ²⁺	y ³⁺	y ⁴⁺	#2
1	130.04988	65.52858	44.02148	33.26793	E					21
2	229.11830	115.06279	77.04428	58.03503	V	2110.12139	1055.56433	704.04531	528.28581	20
3	357.21327	179.11027	119.74261	90.05877	K	2011.05297	1006.03012	671.02251	503.51870	19
4	454.26604	227.63666	152.09353	114.32197	P	1882.95800	941.98264	628.32418	471.49496	18
5	553.33446	277.17087	185.11634	139.08907	V	1785.90523	893.45625	595.97326	447.23177	17
6	640.36649	320.68688	214.12701	160.84708	S	1686.83681	843.92204	562.95045	422.46466	16
7	697.38796	349.19762	233.13417	175.10245	G	1599.80478	800.40603	533.93978	400.70665	15
8	794.44073	397.72400	265.48509	199.36564	P	1542.78331	771.89529	514.93262	386.45129	14
9	908.48366	454.74547	303.49940	227.87637	N	1445.73054	723.36891	482.58170	362.18809	13
10	1021.56773	511.28750	341.19409	256.14739	L	1331.68761	666.34744	444.56739	333.67736	12
11	1149.66270	575.33499	383.89242	288.17113	K	1218.60354	609.80541	406.87270	305.40634	11
12	1206.68417	603.84572	402.89957	302.42650	G	1090.50857	545.75792	364.17437	273.38260	10
13	1335.72677	668.36702	445.91377	334.68715	E	1033.48710	517.24719	345.16722	259.12723	9
14	1464.76937	732.88832	488.92797	366.94780	E	904.44450	452.72589	302.15302	226.86658	8
15	1593.81197	797.40962	531.94217	399.20845	E	775.40190	388.20459	259.13882	194.60593	7
16	1690.86474	845.93601	564.29310	423.47164	P	646.35930	323.68329	216.12462	162.34528	6
17	1803.94881	902.47804	601.98779	451.74266	L	549.30653	275.15690	183.77369	138.08209	5
18	1934.98931	967.99829	645.66795	484.50278	M	436.22246	218.61487	146.07900	109.81107	4
19	2006.02643	1003.51685	669.34699	502.26206	A	305.18196	153.09462	102.39884	77.05095	3
20	2093.05846	1047.03287	698.35767	524.02007	S	234.14484	117.57606	78.71980	59.29167	2
21					K	147.11281	74.06004	49.70912	37.53366	1

>NONHSAT090804+unORF+1+peptide2_LYTLVISEK



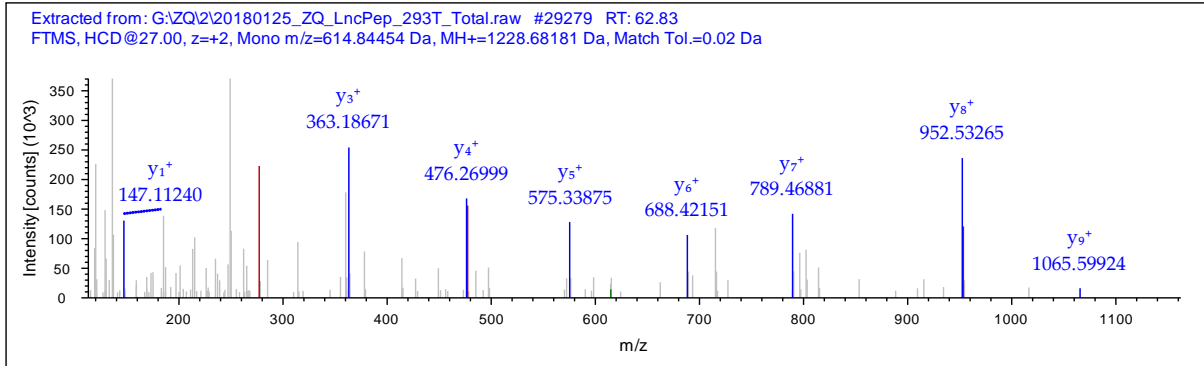
#1	b ⁺	b ²⁺	Seq.	y ⁺	y ²⁺	#2
1	114.09135	57.54931	L			9
2	277.15467	139.08097	Y	952.53500	476.77114	8
3	378.20235	189.60481	T	789.47168	395.23948	7
4	491.28642	246.14685	L	688.42400	344.71564	6
5	590.35484	295.68106	V	575.33993	288.17360	5
6	703.43891	352.22309	I	476.27151	238.63939	4
7	790.47094	395.73911	S	363.18744	182.09736	3
8	919.51354	460.26041	E	276.15541	138.58134	2
9			K	147.11281	74.06004	1

>NONHSAT090804+unORF+1+peptide2_YLYTLVISEKEK



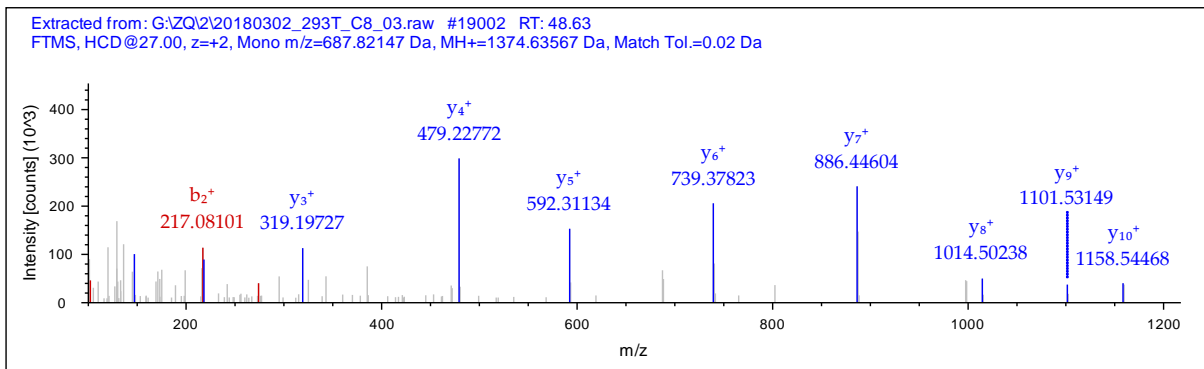
#1	b ⁺	b ²⁺	b ³⁺	Seq.	y ⁺	y ²⁺	y ³⁺	#2
1	164.07060	82.53894	55.36172	Y				12
2	277.15467	139.08097	93.05641	L	1322.75664	661.88196	441.59040	11
3	440.21799	220.61263	147.41085	Y	1209.67257	605.33992	403.89571	10
4	541.26567	271.13647	181.09341	T	1046.60925	523.80826	349.54127	9
5	654.34974	327.67851	218.78810	L	945.56157	473.28442	315.85871	8
6	753.41816	377.21272	251.81090	V	832.47750	416.74239	278.16402	7
7	866.50223	433.75475	289.50559	I	733.40908	367.20818	245.14121	6
8	953.53426	477.27077	318.51627	S	620.32501	310.66614	207.44652	5
9	1082.57686	541.79207	361.53047	E	533.29298	267.15013	178.43584	4
10	1210.67183	605.83955	404.22879	K	404.25038	202.62883	135.42164	3
11	1339.71443	670.36085	447.24299	E	276.15541	138.58134	92.72332	2
12				K	147.11281	74.06004	49.70912	1

>NONHSAT090804+unORF+1+peptide2_YLYTLVISEK



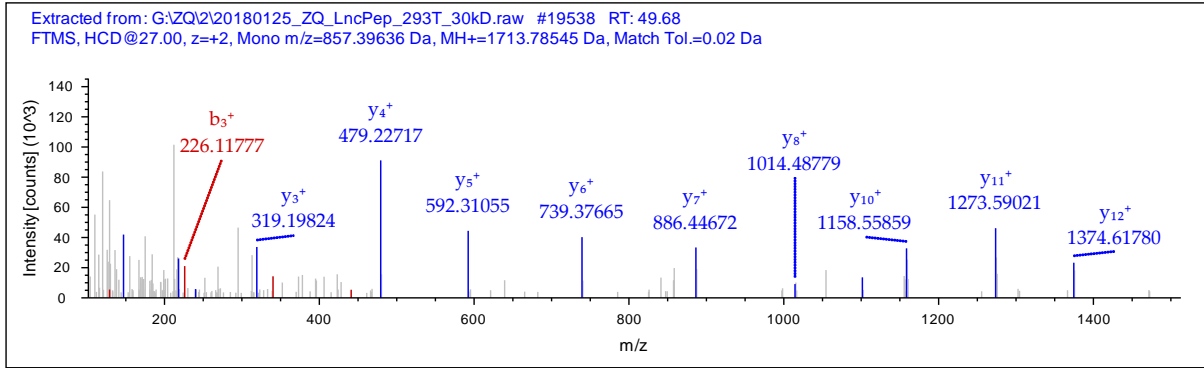
#1	b ⁺	b ²⁺	Seq.	y ⁺	y ²⁺	#2
1	164.07060	82.53894	Y			10
2	277.15467	139.08097	L	1065.61907	533.31317	9
3	440.21799	220.61263	Y	952.53500	476.77114	8
4	541.26567	271.13647	T	789.47168	395.23948	7
5	654.34974	327.67851	L	688.42400	344.71564	6
6	753.41816	377.21272	V	575.33993	288.17360	5
7	866.50223	433.75475	I	476.27151	238.63939	4
8	953.53426	477.27077	S	363.18744	182.09736	3
9	1082.57686	541.79207	E	276.15541	138.58134	2
10			K	147.11281	74.06004	1

>NONHSAT071306+unORF+1+peptide5_TDGSQFFICTAK



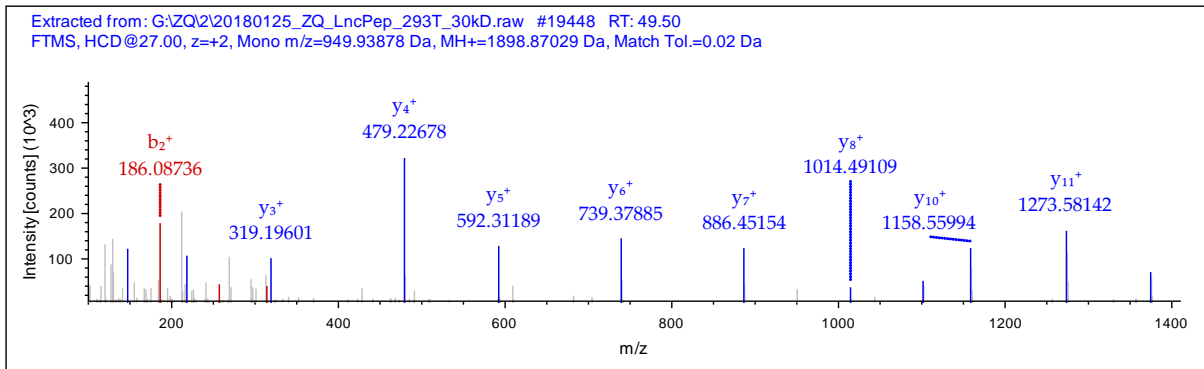
#1	b ⁺	b ²⁺	Seq.	y ⁺	y ²⁺	#2
1	102.05496	51.53112	T			12
2	217.08191	109.04459	D	1273.58821	637.29774	11
3	274.10338	137.55533	G	1158.56126	579.78427	10
4	361.13541	181.07134	S	1101.53979	551.27353	9
5	489.19399	245.10063	Q	1014.50776	507.75752	8
6	636.26241	318.63484	F	886.44918	443.72823	7
7	783.33083	392.16905	F	739.38076	370.19402	6
8	896.41490	448.71109	I	592.31234	296.65981	5
9	1056.44555	528.72641	Carbamidomethyl	479.22827	240.11777	4
10	1157.49323	579.25025	T	319.19761	160.10244	3
11	1228.53035	614.76881	A	218.14993	109.57860	2
12			K	147.11281	74.06004	1

>NONHSAT071306+unORF+1+peptide5_AGPNTDGSQFFICTAK



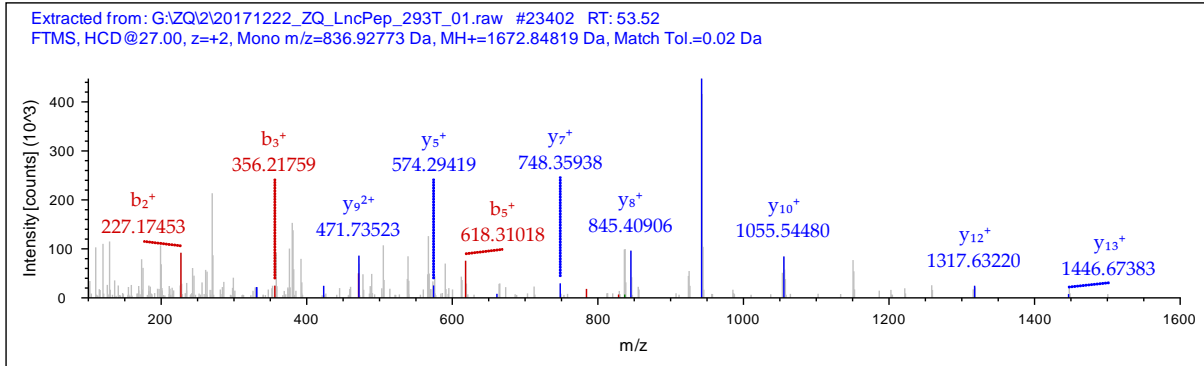
#1	b ⁺	b ²⁺	Seq.	y ⁺	y ²⁺	#2
1	72.04440	36.52584	A			16
2	129.06587	65.03657	G	1642.75306	821.88017	15
3	226.11864	113.56296	P	1585.73159	793.36943	14
4	340.16157	170.58442	N	1488.67882	744.84305	13
5	441.20925	221.10826	T	1374.63589	687.82158	12
6	556.23620	278.62174	D	1273.58821	637.29774	11
7	613.25767	307.13247	G	1158.56126	579.78427	10
8	700.28970	350.64849	S	1101.53979	551.27353	9
9	828.34828	414.67778	Q	1014.50776	507.75752	8
10	975.41670	488.21199	F	886.44918	443.72823	7
11	1122.48512	561.74620	F	739.38076	370.19402	6
12	1235.56919	618.28823	I	592.31234	296.65981	5
13	1395.59984	698.30356	Carbamidomethyl	479.22827	240.11777	4
14	1496.64752	748.82740	T	319.19761	160.10244	3
15	1567.68464	784.34596	A	218.14993	109.57860	2
16			K	147.11281	74.06004	1

>NONHSAT071306+unORF+1+peptide5_ANAGPNTDGSQFFICTAK



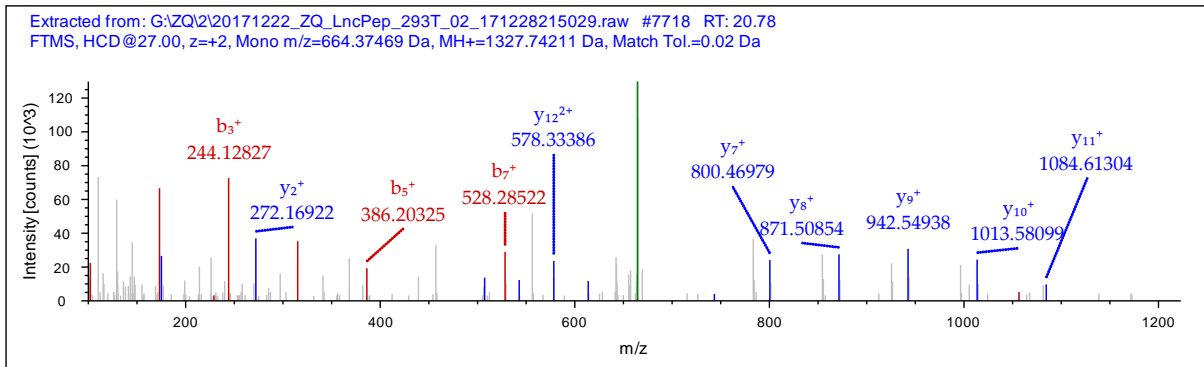
#1	b ⁺	b ²⁺	Seq.	y ⁺	y ²⁺	#2
1	72.04440	36.52584	A			18
2	186.08733	93.54730	N	1827.83311	914.42019	17
3	257.12445	129.06586	A	1713.79018	857.39873	16
4	314.14592	157.57660	G	1642.75306	821.88017	15
5	411.19869	206.10298	P	1585.73159	793.36943	14
6	525.24162	263.12445	N	1488.67882	744.84305	13
7	626.28930	313.64829	T	1374.63589	687.82158	12
8	741.31625	371.16176	D	1273.58821	637.29774	11
9	798.33772	399.67250	G	1158.56126	579.78427	10
10	885.36975	443.18851	S	1101.53979	551.27353	9
11	1013.42833	507.21780	Q	1014.50776	507.75752	8
12	1160.49675	580.75201	F	886.44918	443.72823	7
13	1307.56517	654.28622	F	739.38076	370.19402	6
14	1420.64924	710.82826	I	592.31234	296.65981	5
15	1580.67989	790.84358	Carbamidomethyl	479.22827	240.11777	4
16	1681.72757	841.36742	T	319.19761	160.10244	3
17	1752.76469	876.88598	A	218.14993	109.57860	2
18			K	147.11281	74.06004	1

>NONHSAT071961+unORF+2+peptide1_ILEDLPPSSSRPQS



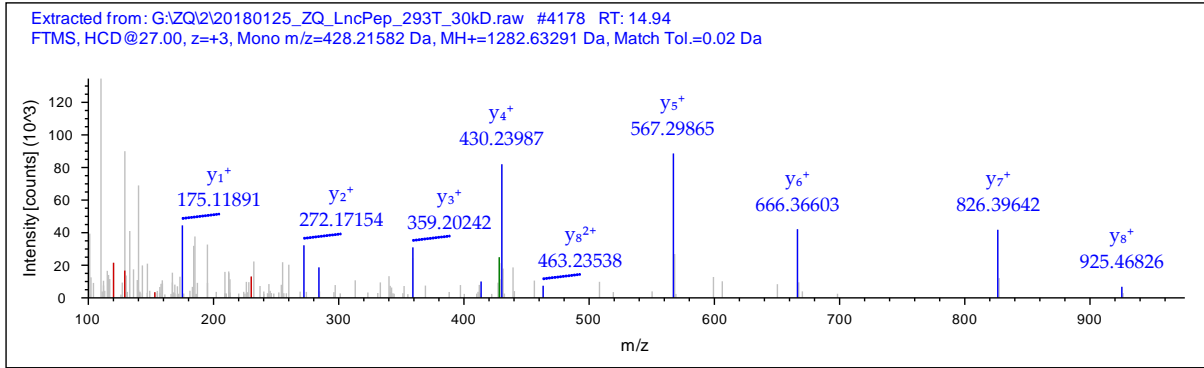
#1	b ⁺	b ²⁺	Seq.	y ⁺	y ²⁺	#2
1	114.09135	57.54931	I			15
2	227.17542	114.09135	L	1559.77008	780.38868	14
3	356.21802	178.61265	E	1446.68601	723.84664	13
4	471.24497	236.12612	D	1317.64341	659.32534	12
5	618.31339	309.66033	F	1202.61646	601.81187	11
6	731.39746	366.20237	L	1055.54804	528.27766	10
7	828.45023	414.72875	P	942.46397	471.73562	9
8	925.50300	463.25514	P	845.41120	423.20924	8
9	1012.53503	506.77115	S	748.35843	374.68285	7
10	1099.56706	550.28717	S	661.32640	331.16684	6
11	1186.59909	593.80318	S	574.29437	287.65082	5
12	1342.70021	671.85374	R	487.26234	244.13481	4
13	1439.75298	720.38013	P	331.16122	166.08425	3
14	1567.81156	784.40942	Q	234.10845	117.55786	2
15			S	106.04987	53.52857	1

>NONHSAT126926+unORF+2+peptide1_TAAAAAAGTITRPR



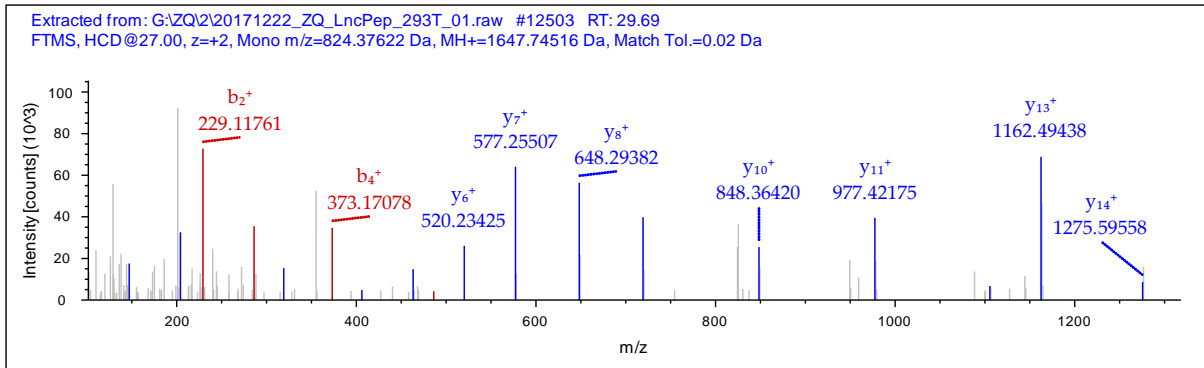
#1	b ⁺	b ²⁺	Seq.	y ⁺	y ²⁺	#2
1	102.05496	51.53112	T			14
2	173.09208	87.04968	A	1226.69647	613.85187	13
3	244.12920	122.56824	A	1155.65935	578.33331	12
4	315.16632	158.08680	A	1084.62223	542.81475	11
5	386.20344	193.60536	A	1013.58511	507.29619	10
6	457.24056	229.12392	A	942.54799	471.77763	9
7	528.27768	264.64248	A	871.51087	436.25907	8
8	585.29915	293.15321	G	800.47375	400.74051	7
9	686.34683	343.67705	T	743.45228	372.22978	6
10	799.43090	400.21909	I	642.40460	321.70594	5
11	900.47858	450.74293	T	529.32053	265.16390	4
12	1056.57970	528.79349	R	428.27285	214.64006	3
13	1153.63247	577.31987	P	272.17173	136.58950	2
14			R	175.11896	88.06312	1

>NONHSAT009961+2+orf1_QTGAVCVHASPR



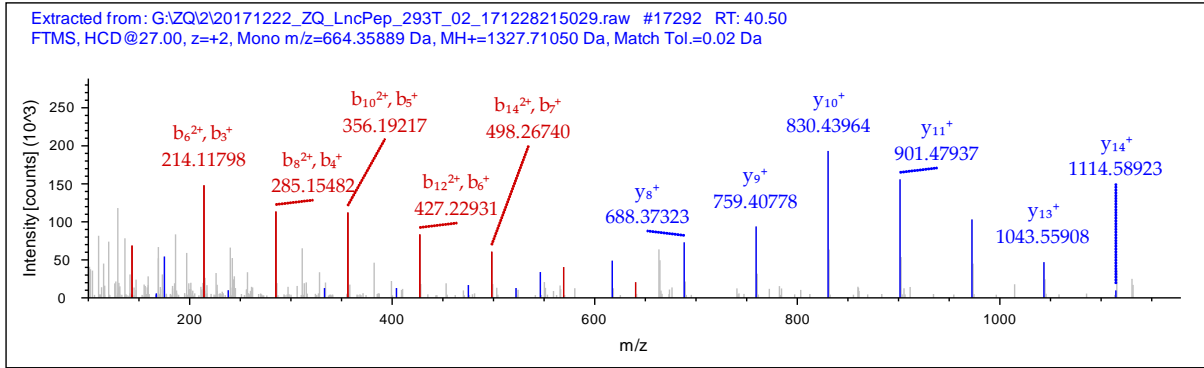
#1	b ⁺	b ²⁺	b ³⁺	Seq.	y ⁺	y ²⁺	y ³⁺	#2
1	129.06586	65.03657	43.69347	Q				12
2	230.11354	115.56041	77.37603	T	1154.57356	577.79042	385.52937	11
3	287.13501	144.07114	96.38319	G	1053.52588	527.26588	351.84681	10
4	358.17213	179.58970	120.06223	A	996.50441	498.75584	332.83965	9
5	457.24055	229.12391	153.08503	V	925.46729	463.23728	309.16061	8
6	617.27120	309.13924	206.42858	Carbamidomethyl	826.39887	413.70307	276.13781	7
7	716.33962	358.67345	239.45139	V	666.36821	333.68774	222.79425	6
8	853.39853	427.20290	285.13769	H	567.29979	284.15353	189.77145	5
9	924.43665	462.72146	308.81673	A	430.24088	215.62408	144.08514	4
10	1011.46768	506.23748	337.82741	S	359.20376	180.10552	120.40610	3
11	1108.52045	554.76386	370.17833	P	272.17173	136.58950	91.39543	2
12				R	175.11896	88.06312	59.04450	1

>NONHSAT009961+2+orf1_DLGLSLGQEEAAGGGSDGK



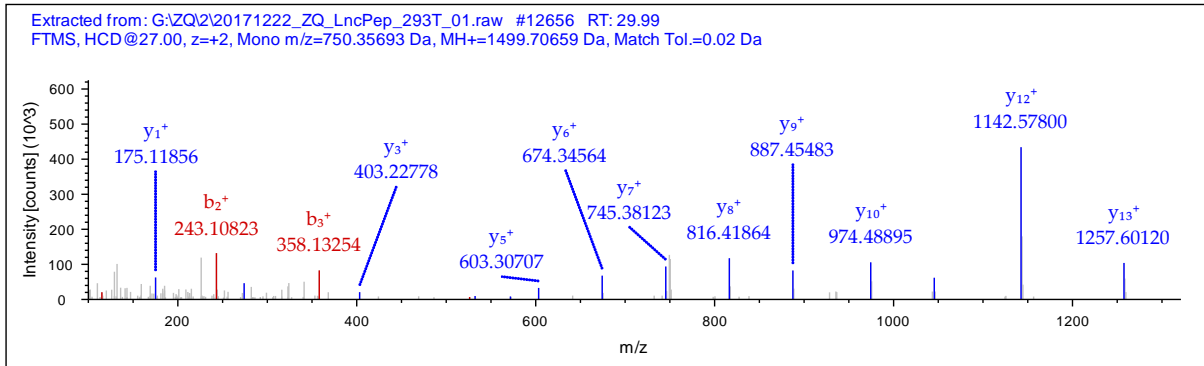
#1	b ⁺	b ²⁺	Seq.	y ⁺	y ²⁺	#2
1	116.03423	58.52075	D			18
2	229.11830	115.06279	L	1532.71880	766.86304	17
3	286.13977	143.57352	G	1419.63473	710.32100	16
4	373.17180	187.08954	S	1362.61326	681.81027	15
5	486.25587	243.63157	L	1275.58123	638.29425	14
6	543.27734	272.14231	G	1162.49716	581.75222	13
7	671.33592	336.17160	Q	1105.47569	553.24148	12
8	800.37852	400.69290	E	977.41711	489.21219	11
9	929.42112	465.21420	E	848.37451	424.69089	10
10	1000.45824	500.73276	A	719.33191	360.16959	9
11	1071.49536	536.25132	A	648.29479	324.65103	8
12	1128.51683	564.76205	G	577.25767	289.13247	7
13	1185.53830	593.27279	G	520.23620	260.62174	6
14	1242.55977	621.78352	G	463.21473	232.11100	5
15	1329.59180	665.29954	S	406.19326	203.60027	4
16	1444.61875	722.81301	D	319.16123	160.08425	3
17	1501.64022	751.32375	G	204.13428	102.57078	2
18			K	147.11281	74.06004	1

>NONHSAT122600+1+orf1_AAAAAAAAAAAAAASAR



#1	b ⁺	b ²⁺	Seq.	y ⁺	y ²⁺	#2
1	72.04440	36.52584	A			17
2	143.08152	72.04440	A	1256.67067	628.83897	16
3	214.11864	107.56296	A	1185.63355	593.32041	15
4	285.15576	143.08152	A	1114.59643	557.80185	14
5	356.19288	178.60008	A	1043.55931	522.28329	13
6	427.23000	214.11864	A	972.52219	486.76473	12
7	498.26712	249.63720	A	901.48507	451.24617	11
8	569.30424	285.15576	A	830.44795	415.72761	10
9	640.34136	320.67432	A	759.41083	380.20905	9
10	711.37848	356.19288	A	688.37371	344.69049	8
11	782.41560	391.71144	A	617.33659	309.17193	7
12	853.45272	427.23000	A	546.29947	273.65337	6
13	924.48984	462.74856	A	475.26235	238.13481	5
14	995.52696	498.26712	A	404.22523	202.61625	4
15	1082.55899	541.78313	S	333.18811	167.09769	3
16	1153.59611	577.30169	A	246.15608	123.58168	2
17			R	175.11896	88.06312	1

>NONHSAT087209+1+orf1_NQDPASAAAAEEVR



#1	b ⁺	b ²⁺	Seq.	y ⁺	y ²⁺	#2
1	115.05021	58.02874	N			15
2	243.10879	122.05803	Q	1385.66563	693.33645	14
3	358.13574	179.57151	D	1257.60705	629.30716	13
4	455.18851	228.09789	P	1142.58010	571.79369	12
5	526.22563	263.61645	A	1045.52733	523.26730	11
6	613.25766	307.13247	S	974.49021	487.74874	10
7	684.29478	342.65103	A	887.45818	444.23273	9
8	755.33190	378.16959	A	816.42106	408.71417	8
9	826.36902	413.68815	A	745.38394	373.19561	7
10	897.40614	449.20671	A	674.34682	337.67705	6
11	968.44326	484.72527	A	603.30970	302.15849	5
12	1097.48586	549.24657	E	532.27258	266.63993	4
13	1226.52846	613.76787	E	403.22998	202.11863	3
14	1325.59688	663.30208	V	274.18738	137.59733	2
15			R	175.11896	88.06312	1