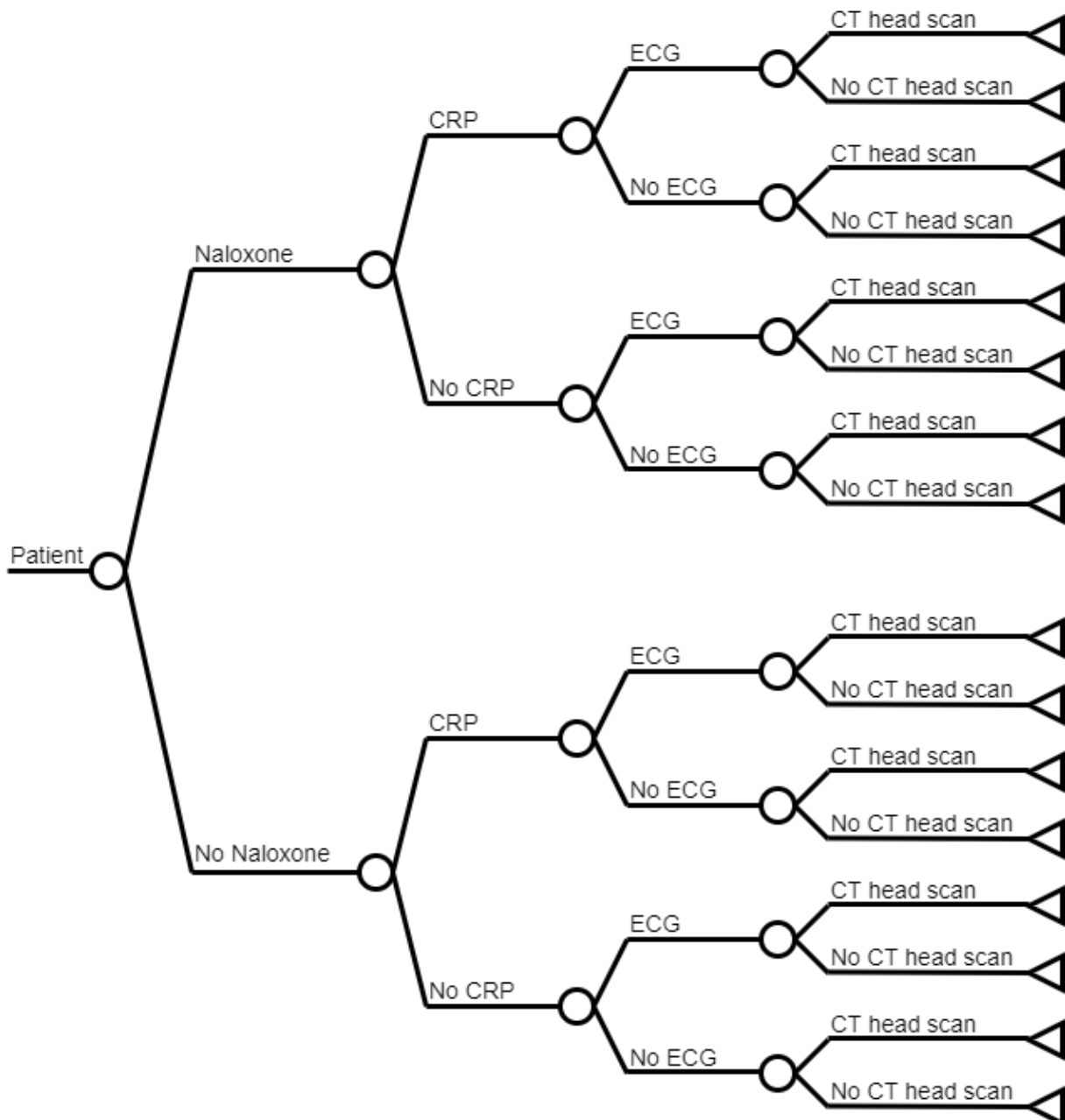


Supplementary figure 1. Decision tree at outpatient clinic



The graph shows combinations of tests and treatments at the OAEOC. The probabilities from Table 1 were used at all relevant chance nodes (e.g., at baseline, the probability of a CT head scan was 6 % at each of the eight chance nodes in the figure).

Glucose (Table 1) was excluded from the graph but included in the calculations.

CRP: C-reactive protein; CT: computed tomography; ECG: electrocardiogram; OAEOC: Oslo Accident and Emergency Outpatient Clinic.