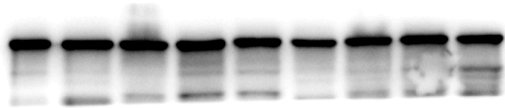


(A)

43kDa
34kDa



(B)

43kDa



(C)

43kDa



Figure. Raw Western blotting images for Fig.5. (A) Raw western blotting image for GAPDH (used as a loading control, 37kDa); (B) Raw western blotting image for p-p38 (43kDa); (C) Raw western blotting image for SIRT2 (43kDa).