

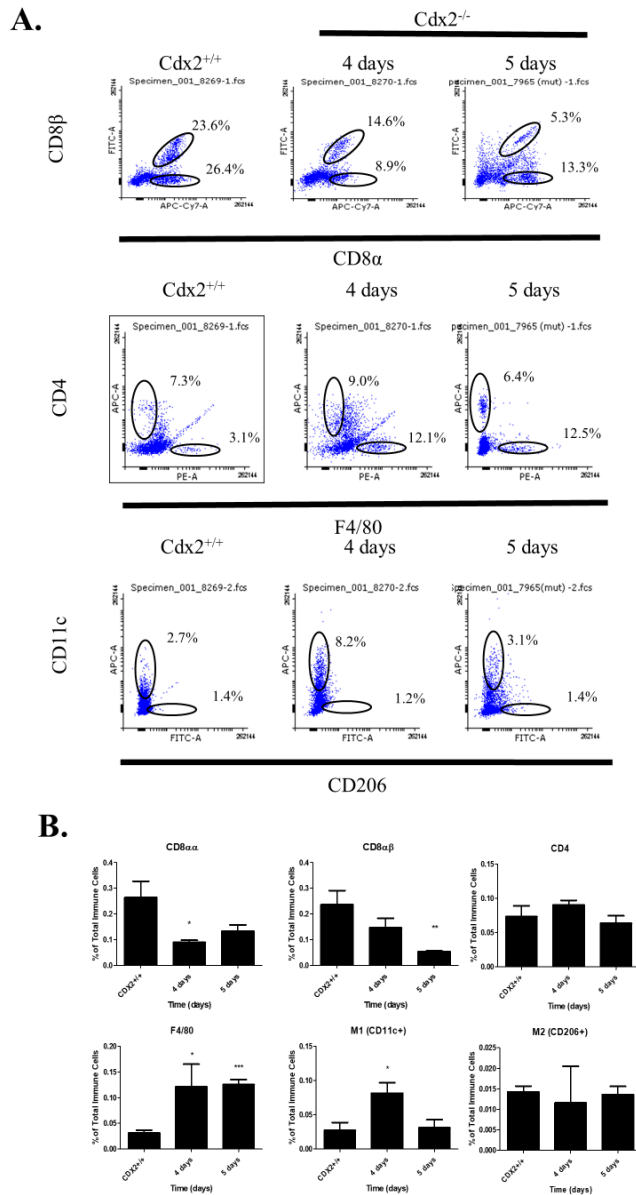
Supplementary Table 1 List of PCR primers used.

Gene Name	Primer sequence	Ta
Actin RT-PCR	F: CCCTAAGGCCAACCGTGAAA R: GTCCTATGGGAGAACGGCAG	54 °C
Cdx2 RT-PCR	F: AGCCAAGTGAAAACCAGGACAA R: TGCAAGGAGGTCACAGGACT	54 °C
SIS RT-CRP	F: GCGTAGAGAGAGGGCTGCATA R: GCCCGTTGCCAATTTTTGAG	53 °C
H2-T3 Q-PCR	F: CAATGGTGGAAACGGAGACG R: GAGTGCCTCAGATTCAGCCC	58 °C
GAPDH Q-PCR	F: GGCCGGTGCTGAGTATGTCG R: TTCAAGTGGGCCCCCGGCCTT	58 °C
H2-T3 Promoter region	F: GGCTGTTTCCCTCCTCATCC R: AAAGGCCTTGCACTCCTGTT	52 °C

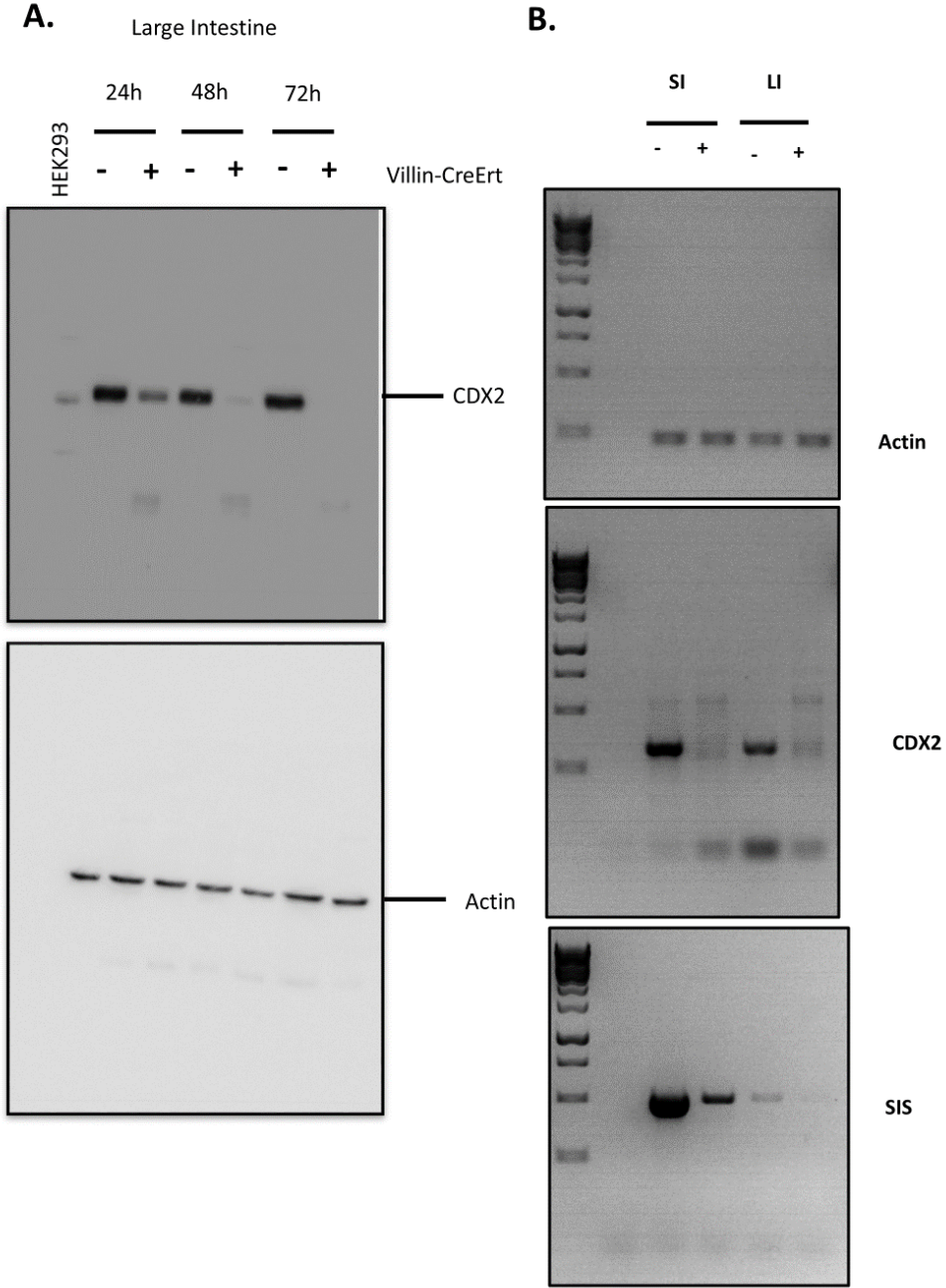
Supplementary Table 2 list of flow cytometry antibodies

Target Protein	Catalogue number (all from Bio-Legend)
Fc blocking	101319
CD45	103125
CD8 $\alpha$	100713
CD4	100515
CD335	137607
CD11c	117309
F4/80	123109
Granzyme B	372207
CD8 $\beta$	126605
Cd206	141703
Cd11b	101205

**Supplementary Figure 1.** Cdx-dependent immune cell recruitment. Intestinal epithelial and associated cells were collected 4 or 5 days post-tamoxifen treatment and CD45-positive populations analyzed by flow cytometry. **A.** Scatter plots of CD45 cells, assessed for CD8 $\alpha$  vs CD8 $\beta$ , CD4 vs F4/80, CD11C and CD206 to differentiate inflammatory vs anti-inflammatory macrophages, **B.** Specific cell populations were compared as a percentage of total immune cells. CD8 $\alpha$  cells were depleted at both time points, while inflammatory macrophage populations were increased 4 days post treatment. \*  $p \leq 0.05$ , \*\*  $p < 0.01$ , \*\*\*  $p < 0.001$  by ANOVA.



**Supplementary Figure 2.** Full gel images for CDX2 expression in knock out mice by western blot and RT-PCR



Supplementary Figure 3. Full gel images for ChIP data of CDX2 pull-down.

