

OMTN, Volume 25

Supplemental information

**lncRNA H19 facilitates the proliferation
and differentiation of human dental pulp stem
cells via EZH2-dependent LATS1 methylation**

Zhen Du, Xiaoming Shi, and Aizhong Guan

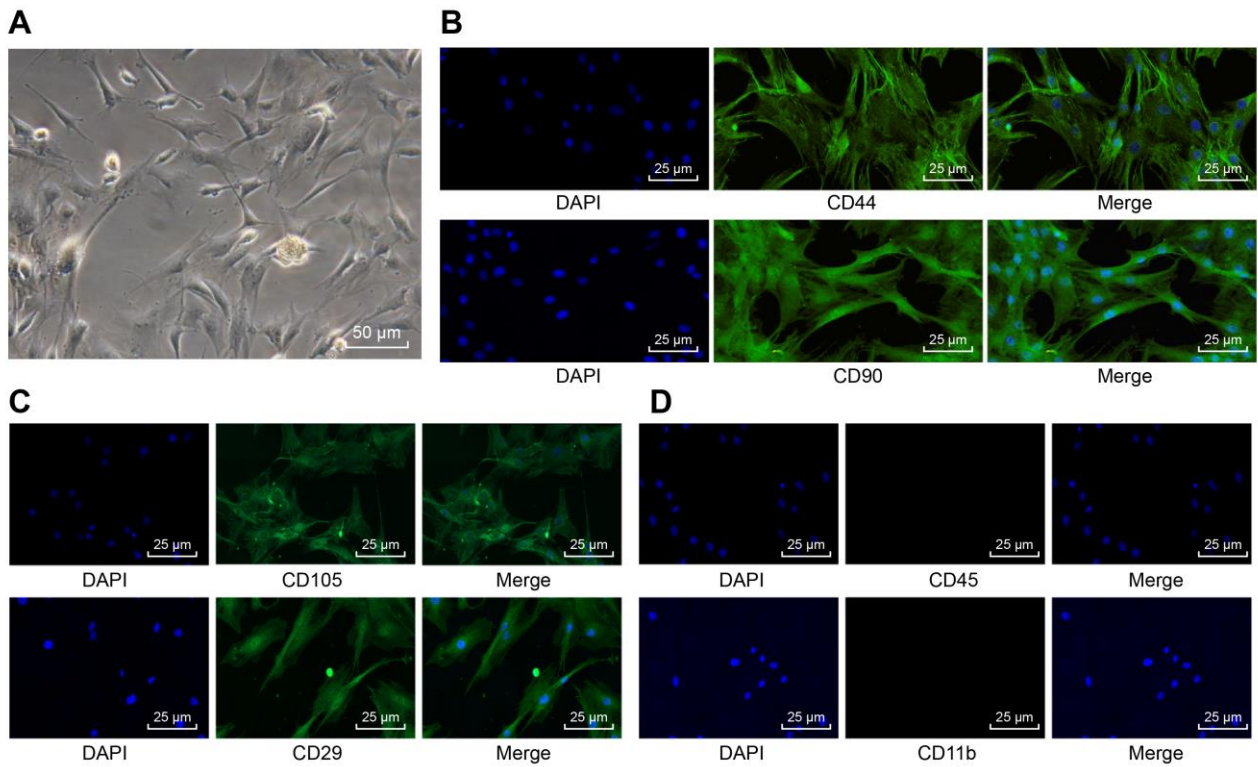


Figure S1 Successful isolation and culture of hDPSCs. A, morphology of hDPSCs observed under an inverted microscope ($\times 200$). B, expression of hDPSC surface markers (CD44 and CD90) detected by immunofluorescence ($\times 400$). C, expression of hDPSC surface markers (CD105 and CD29) detected by immunofluorescence ($\times 400$). D, expression of hDPSC surface markers (CD45 and CD11b) detected by immunofluorescence ($\times 400$).

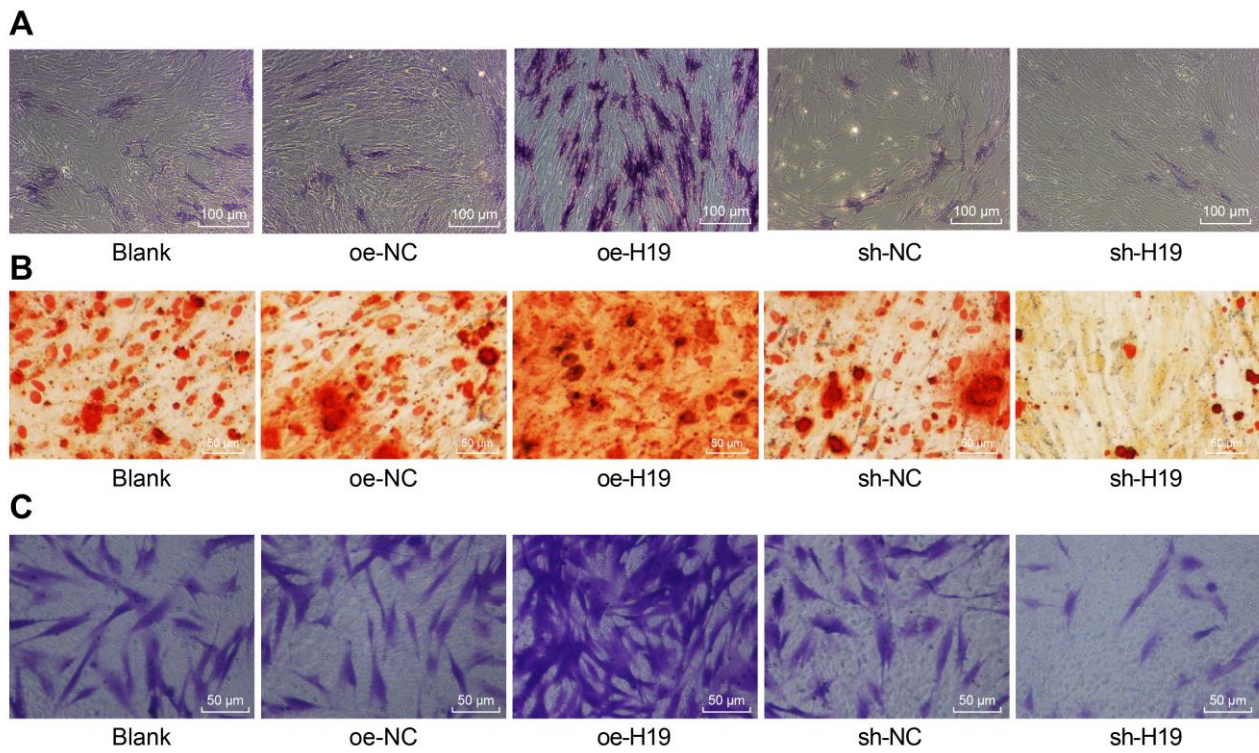
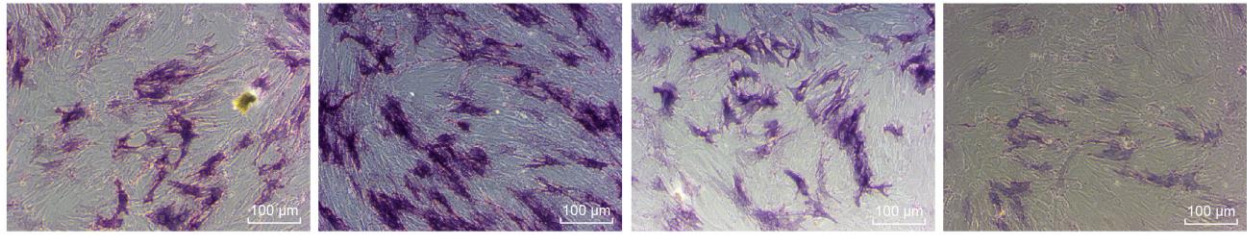


Figure S2 A, ALP staining detection ($\times 100$). B, the formation of mineralized nodules assessed by Alizarin red staining ($\times 200$). C, cell migration determined by Transwell assay ($\times 200$).

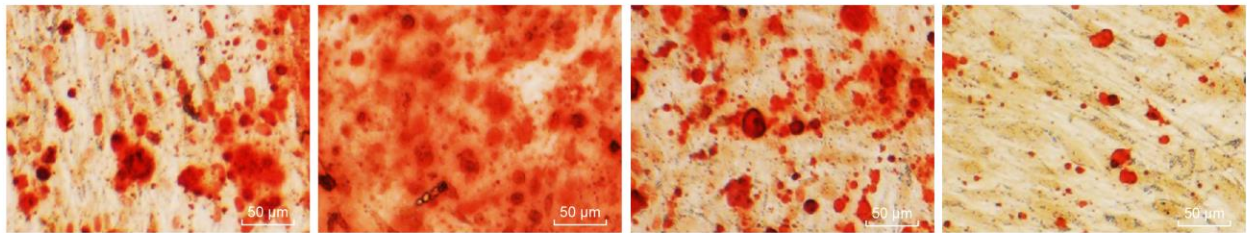
A

oe-NC

oe-H19

oe-H19 + oe-LATS1

oe-LATS1

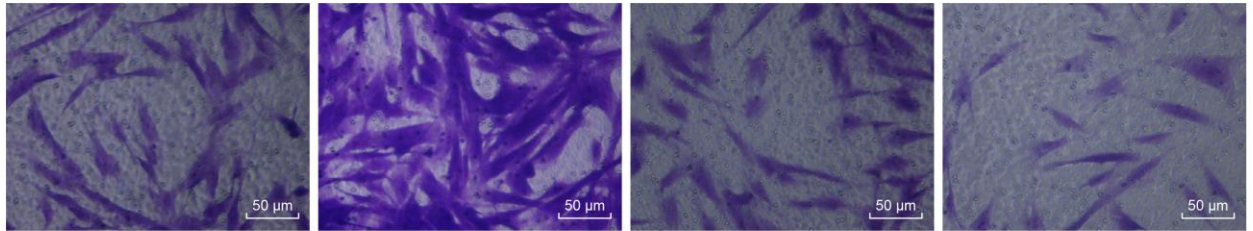
B

oe-NC

oe-H19

oe-H19 + oe-LATS1

oe-LATS1

C

oe-NC

oe-H19

oe-H19 + oe-LATS1

oe-LATS1

Figure S3 A, ALP staining detection ($\times 100$). B, the formation of mineralized nodules examined by Alizarin red staining ($\times 200$). C, migration of hDPSCs evaluated by Transwell assay ($\times 200$).

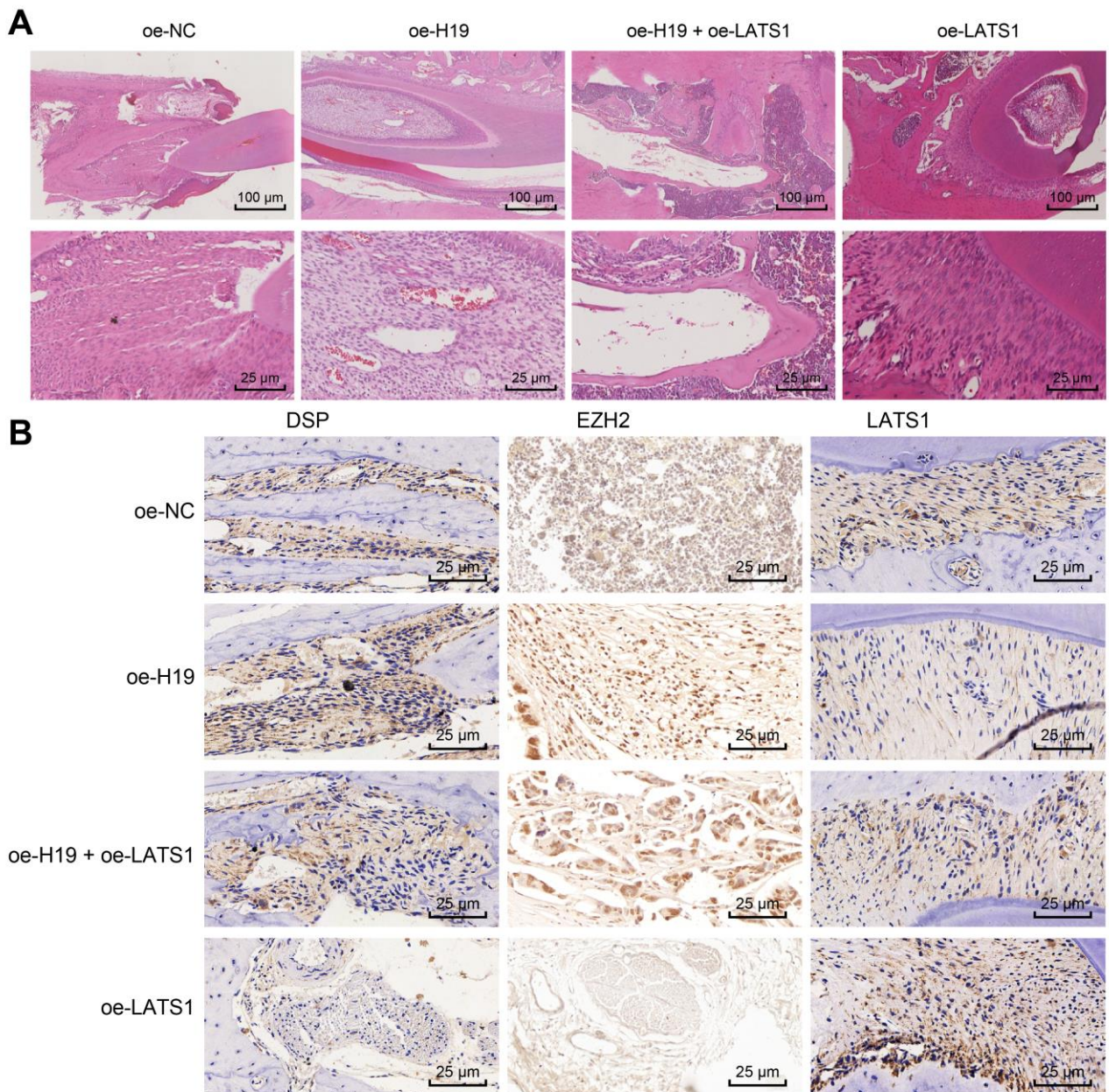


Figure S4 A, the formation of dentin and dental pulp-like cells assessed by HE staining ($\times 100$). B, the expressions of DSPP, EZH2 and LATS1 in dentin and dental pulp-like tissues evaluated by immunohistochemistry ($\times 200$).

Table S1 Primer sequences for RT-qPCR

Gene	Primer sequence
H19	F: 5'-TTCAAAGCCTCCACGACTCT-3'
	R: 5'-GCTCACACTCACGCACACTC-3'
ALP	F: 5'-CCACGTCTTCACATTTGGTG-3'
	R: 5'-AGACTGCGCCTGGTAGTTGT-3'
DMP1	F: 5'-ACA GCAGCTCAGCAGAGA GT-3'
	R: 5'-TAATAGCCGTCTTGGCAGTC-3'
OCN	F: 5'-GGCAGCGAGGTAGTGAAGAG-3'
	R: 5'-CTGGAGAGGAGCAGAACTGG-3'
DSPP	F: 5'-GTCGCTGTTGTCCAAGAAGA-3'
	R: 5'-ATCCTCATCTGCTCCATTCC-3'
LATS1	F: 5'-CCACCCTACCCAAAACATCTG-3'
	R: 5'-CGCTGCTGATGAGATTTGAGTAC-3'
GAPDH	F: 5'-ATGGAGAAGGCTGGGGCTC-3'
	R: 5'-AAGTTGTCATGGATGACCTTG-3'

Notes: RT-qPCR, reverse transcription quantitative polymerase chain reaction; F, forward; R, reverse; GAPDH, glyceraldehyde-3-phosphate dehydrogenase; ALP, alkaline phosphatase; DMP1, dentin matrix protein 1; OCN, osteocalcin; DSPP, dentin sialophosphoprotein; LATS1, large tumour suppressor 1.